



Questions? Comments? Get in touch with us, or snap a shot of yourself enjoying your new sofa and tag us:

HAPPY@ELEPHANTINABOX.COM

ELEPHANTINABOX.COM

[@ELEPHANT.INABOX](https://www.instagram.com/ELEPHANT.INABOX)



FITS PERFECTLY IN A **BOX.**



ELEPHANT IN A BOX

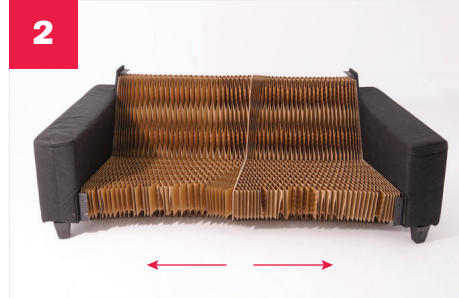
LOVESEAT SET-UP INSTRUCTIONS

INSIDE THE BOX YOU WILL FIND:

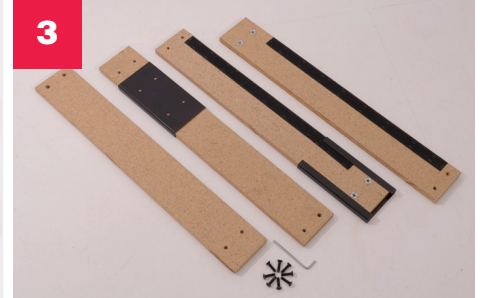
- Loveseat sofa body (Elephant Core)
- Wooden beams (4 pieces)
- Black fabric beams (front panel 2 pieces)
- Black screws (24 Pieces)
- Hex key (1)
- Back Lining (2 Pieces)
- Fabric cover (1)
- Base lining (1)
- Seat cushions (2 pieces)
- Seat cushion covers (2 pieces)



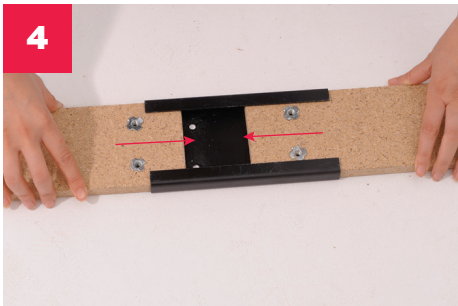
1 Open the box and carefully remove all contents. Lay out all parts and hardware in an organized manner.



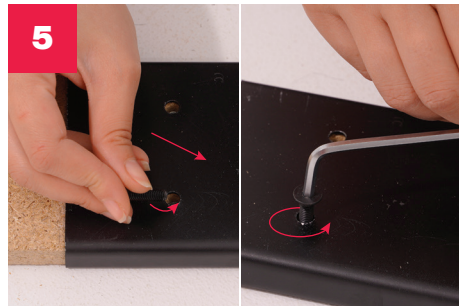
2 Expand the loveseat HoSTTech core by pulling outwards on the armrests in a straight line.



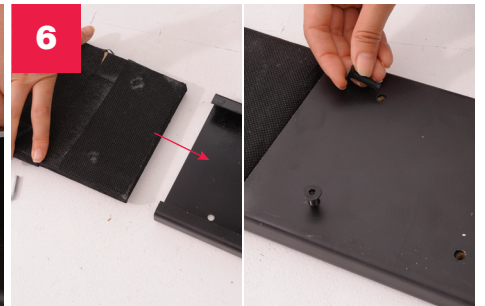
3 To assemble the beams, you'll need the 4 wooden parts and the black screws for both set of beams.



4 To assemble the wooden beams, slide in one of the wooden parts into the black metal piece, from the back, one on each side. Follow this step for both set of beams.



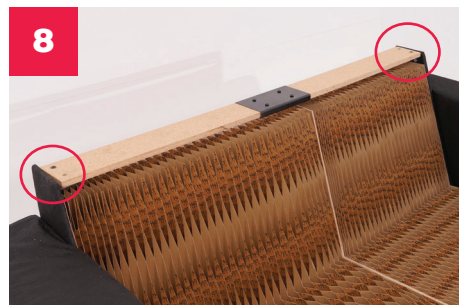
5 Secure the wooden beams into the black metal piece using the screws and the hex key that's included.



6 To connect the front beam together (black fabric beams/front panel), insert them into the black metal piece and secure them with the screws using the hex key.



7 To secure the wooden beams to the loveseat, put one of the wooden beams into the metal connector on top of the back of the loveseat.



8 Secure the beam on both sides of the back of the loveseat as shown with screws using the hex key.



9 Flip the sofa towards and secure the bottom beam to the metal connectors on the back bottom of the loveseat.



10 Flip the loveseat backwards and then secure the front beam onto the metal connectors on the front bottom of the sofa.



11 Secure the front beam to the sofa with the screws using the hex key.



12 Place both back lining pieces on the back of the sofa.

ELEPHANT IN A BOX

LOVESEAT SET-UP INSTRUCTIONS



13

Placing them on at the same time, starting from a V shape. This will make them fit tighter.



14

The loveseat should look like this.



15

Take the loveseat fabric cover out of the box and cover the structure with it.



16

Put the seat lining on top of the fabric cover.



17

Stick the cover onto the seat lining.



18

Flip the sofa towards and stick the cover onto the bottom beam with the velcro.



19

Stick the velcro of the back lining onto the bottom beams.



20

The final look of the fabric cover and base lining.



21

Take the seat fabric covers and compressed seat cushions from the bags and expand them.



22

Insert the seat cushion inside the cover. Please, give the cushions 72 hours to regain their shape and fluffiness.



23

Place the seat cushions as shown. Now relax!