



SPARE PARTS

2019 RECAMBIOS

Recambios FIDAMBI

info@apliven.com | www.apliven.com

BIANCHI



RICAMBI PER DISTRIBUTORI / Spare parts for distributors



ART. SP04030416

Valvola non ritorno

No return valve



ART. SP04035326

Racc.Gom.6-1/8 A-237

Elbow connection 6-1/8 a-237



ART. SP04039616

Valv. di sicurezza

Safety valve



ART. SP04040316

Valv. di scarico con or 1/8 ga

Drain valve with or 1/8 ga



ART. SP04040916-01

Valvola di sicurezza 11bar pg7 tipo 8301003000

Safety valve 11bar pg7 tipo 8301003000



ART. SP04041016

Valvola di non ritorno maschio

No-return male valve



ART. SP05137316

Secchio raccolta fondi

Bucket



ART. SP05137615

**Camera miscelazione in verton
-ricambio compatibile-**

Verton mixer chamber - compatible spare part



ART. SP05143511

Lexan est. Porta pegaso

External lexan for pegaso door



ART. SP05148032-01

**Piston.C/sede valv non ritorno -
ricambio compatibile - adattabile**

*Piston with no-return valve seat -
compatible and adattable spare part*



ART. SP05240311

Pann. Lexan por. Bvm 676/85 ivs

Bvm 676/85 ivs door lexan panel



ART. SP07018111

Spirale dx d=68 passo 35 vega - B -

Ø 68 right spiral - 35 pitch



ART. SP08011511

Isol. vano R-prod.

Insulation for product distribution area



ART. SP08011531

Isol.Antiurto v-600

V600 anti shock insulation



ART. SP16012021

Filtro gr-caffe magg.

Coffee group filter



ART. SP16022516

Filtro entrata acqua 1/4 fem

Water entry filter 1/4" female

BIANCHI



BIANCHI



ART. SP18006616

Macina macinino spec.

Special grinder blade



ART. SP18007316

Macina macinino dm.64 20 Dent

D=64 grinder blade 20teeth



ART. SP18007326

Macina macinino dm. 64 12 Dent

D=64 grinder blade 12teeth



ART. SP20006316

Aspiratore

Aspirator w/spacer (ant-sir-or)



ART. SP20017510

Ass. Motorid. Vega

Vega gearmotor



ART. SP20017910

Ass. motorid. doppia spirale

Double-spiral motor for vega



ART. SP20018616

Aspirat. C/bocchetta pegaso

Aspirator with connection pegaso



ART. SP20019816

Motore ventilatore v700/850

Fan motor vega 850/700



ART. SP20021016

Ventil. Vega allung. Tas27b

Ventilator fan for v700 lux



ART. SP21057212

Assieme piedino m10x40 bvm 971

Foot Assy (m10x40) - -bvm971



ART. SP23019916

Osram lumilux I18w/865

Osram lumilux I18w/865



ART. SP23039116

Lamp.Plaf f.A.230V 6w lnk 6400

Neon lamp. F.A.230V 6w lnk 6400



ART. SP23039166

Lamp. plaf+cav.230V 13w lnk6400

Lnk6400 230v 13w ceiling light



ART. SP24012116

Rilevator.Di flusso ingr. d.1,8

Flow sensor input d.1,8



ART. SP25020516

Clixon ty6o 110° ra

Clixon ty6o 110° ra



ART. SP25020616

Clixon ty6or 135° rm

Clixon ty6or 135° rm



ART. SP26017016

Micro s/leva 10gr. Bt

Micro swich without leverage



ART. SP26020612

Ass. Sonda ntc

Ntc sensor 100k assembly



ART. SP26050826

Sensor. temperat. con ntc+connet

Temperature sensor - with ntc + connector



ART. SP27003326

El-pompa ulka ex5 24v-ac

Ulka electropump ex5 24v-ac



ART. SP27004016

El-pompa immers.24Vdc c/portag

Immersion pump 24vdc



ART. SP29004312

Flang. tea. cald. c/res. 230V aisi

316tflang

Boiler flange w/resistance 230v aisi 316



ART. SP36210716

O-ring 3131 sil.

O-ring 3131 sil.



ART. SP41037216

Nucleo 2 vie per ev.

Olab core ev. 2 Way



ART. SP41037316

Canotto olab per valvola 25019416

Olab valve bush for 25019416



ART. SP41037416

Nucleo olab tefl. 3 vie

3 Way olab tefloned core



ART. SP43034316ALT

Relè per gr-frigo BV685 alternativo

BV685 cooling unit relay - alternative



ART. SP43146516

Trasf. 220V -24v 35va

Transformer 220v-24v 35va



ART. SP43152116

Reattore elettron.Osram 2x18-36-40

Osram electronic reactor 2x18-36-40



ART. SP93008410

C/o vasch. acqua

Water tank assembly



ART. SP93008420

C/o vasch. acqua con 1 micro bt

Water tank assembly with 1 micro bt



ART. SPR450898/V

Nucleo mobile 2 vie per valvola
25019416

2 Way unit core for 25019416



ART. DU21001007_COP
Macina coppia cod.2012
Pair of grinders cod.2012



ART. DU21004003
Or testina caffè Viton
Viton o-ring for piston coffee



ART. DU21004029
Micro mignon leva corta
Micro mignon short lever



ART. DU21010020
Aspiratore tangenziale star living
Star living tangential aspirator



ART. DU23004012
Filtro inox sup.
Upper filter inox



ART. DU23011010
Micro mignon leva lunga
Micro mignon long lever



ART. DU23017007
Display lcd (daytona) blu
Display lcd (daytona) blu



ART. DU30004013
Or 136 silicone rosso x estrattore rif.4112
O-ring 136 red silicon for extractor rif.4112



ART. DU30007005

Canotto e.V. 2Vie

2 Way valve bush



ART. DU30009026

Contatore volumetrico acqua

Water volumetric counter



ART. DU70102011/150

Motoriduttore dosi polveri 150 rpm

Motodoser 150rpm



ART. DU70102011/80/NE

Motodosatore 80 rpm nuova versione

Motodoser 80 rpm new version



ART. DU70210001ASIA

Motofrullatore '04 vers. Asiatica

Motomixer '04 asian version



ART. CD0016

Dado per resistenza N & W

Nut for heating element



ART. ZN090421A

Or 105 silicone (guarnizione 2025)

105 Silicon o-ring (gasket 2025)



ART. ZN091536

Valvola di fondo

Bottom valve



ART. ZN091802

Starter tipo S 10

Starter type S 10



ART. ZN092364

Guarnizione per raccordo 3/4

Gasket for 3/4 fitting



ART. ZN092439

Micro tipo cherry

Cherry micro-switch



ART. ZN092651

Intermedio a gomito

Intermediate elbow link



ART. ZN093167

Or 4118 silicone rosso

O-ring 4118 red silicon



ART. ZN093187

Cuscinetto reggispinta

Thrust bearing



ART. ZN093628

Tubo trasparente d.14X10

Transparent tube d.14X10



ART. ZN093951

Dado di serraggio g 3/4

Tightening nut 3/4



ART. ZN093952

Niplo racc.Ingresso h20

Water inlet connection nipple



ART. ZN094048

Anello ferma sacchetto

Bag lock collar



ART. ZN094124

Depuratore completo

Complete depurator



ART. ZN094125

Fustino x depuratore lt.10 Bs c/
att. art. 654/Ar

*Depurator recipient lt.10 Bs c/att.
art.654/Ar*



ART. ZN094540

Guarnizione or 3125

O-ring 3125



ART. ZN094594

Guarnizione or 2031 (or 107 EDPM)

O-ring 2031 (o-ring 107 EDPM)



ART. ZN094611

Guarnizione or 2018

O-ring 2018



ART. ZN094872

Sonda temperatura caldaia

Boiler temperature probe



ART. ZN094971

Nucleo ev solubili ode

Electrovalve core instant products



ART. ZN095529

Raccordo portagomma 1/8 (ottone)

Rubber holder union 1/8 (brass)



ART. ZN095529TM1

Diritto pg07.2-G1/8m tm1

Straight fitting pg07.2-G1/8m tm1



ART. ZN095624

Or 116 in viton SH70

Or 116 in viton SH70



ART. ZN095840

Macina singola 2030

Single grinder 2030



ART. ZN096355

Microinterruttore -ul -
Micro switch - ul



ART. ZN097266

Lampada tipo tl 8 watt neon
Ligh type tl 8w neon



ART. ZN097266LED

Lampada tipo tl 8 watt led l=30 cm
Ligh type tl 8w led l=30 cm



ART. ZN097383

Elettrov.Entrata acqua 220v - 2.5L/min
Electrovalve water inlet 220v - 2,5 l/min



ART. ZN097435

Filtro acqua per cont. volumetrico
Water filter for volumetric counter



ART. ZN097470

Elettrov. 3 vie 220 volt bobina 8w
3 Way electrovalve 220v - 8w coil



ART. ZN097472

Nucleo elettrov. 3 vie - viton
3 Way eletrovalve core - viton



ART. ZN097530

Secchio raccolta fondi
Bucket

NECTA



NECTA



RICAMBI PER DISTRIBUTORI / Spare parts for distributors



ART. ZN097685

Tubo silicone marrone 7.5X12'al metro

Brown silicon tube 7,5x12 (meter)



ART. ZN097796

Interruttore

Switch



ART. ZN097916

Ventolina mixer marrone

Brown mixer fan



ART. ZN097917

Boccola di tenuta

Sealing bushing



ART. ZN098577

Pistone superiore

Upper piston



ART. ZN098583

Elettroventilatore

Electroventilator



ART. ZN098608

Coclea lunga cm.14 (11 Spirali)

Long scroll cm 14 (11 spirals)



ART. ZN098609

Coclea corta 11,7 cm (9 spirali)

Short scroll cm 11,7 (9 spirals)



ART. ZN098640

Calotta superiore caldaia

Upper boiler-cover 300cc- brass



ART. ZN098641

Calotta inferiore caldaia

Lower boiler-cover 300cc-brass



ART. ZN098645

Resistenza 1000w

Heating element 1000w



ART. ZN098687

Filtro caffè

Coffee filter



ART. ZN098688

Molla ritorno pistone

Piston return spring



ART. ZN098701

**Guarnizione caldaia brio venezia
dim.73,03X3,53**

*Es. boiler gasket brio venezia
dim.73,03X3,53*



ART. ZN098707

Contatore volumetrico d.1.8

Volumetric counter d.1.8



ART. ZN098708

Motoriduttore bitron per gruppo caffè

Bitron motoreducer for coffee group

NECTA





ART. ZN098716

Elettromagnete 220v

Electromagnet 220v - faston



ART. ZN098719

Tubo pvc 14x19 (al metro)

Pvc pipe 14x19 (a meter)



ART. ZN098758

Raccordo diritto

Straight union



ART. ZN098760

**Pompa a vibrazione ex5gw
230/240v 50hz ulka bianca**

*Ex5 gw pump 230/240v 50hz ulka white
(brass)*



ART. ZN098760OLAB

**Pompa term.Ottone 230v-50hz-
48w pg07-hnbr 15bar gw (ex5)**

*Brass pump glow wire 230v-50hz-48w
pg07-hnbr 15bar (ex5)*



ART. ZN098760RED

**Pompa a vibrazione ex5 230v ros -
sa ulka**

Ex5 pump 230/240v 50hz ulka red (brass)



ART. ZN098761OLAB

**Ev bl.2+3+2Vie dn2+dn1.4. dn2
230v tm1**

Ev bl.2+3+2Vie dn2+dn1.4. dn2 230v tm1



ART. ZN098764

By-pass pompa taratura=12 bar

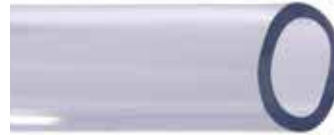
By-pass pump 12 bar



ART. ZN098779

Fusibile 6.3X32 1 amp

Fuse 6,3x32 1 amp



ART. ZN098800

Tubo trasparente 12x16 (al metro)

Transparent tube 12x16 (per meter)



ART. ZN098808

Motofrullatore

Motormixer



ART. ZN098815

Protettore termico 110 gradi

110 Degrees thermic protection



ART. ZN098845ALT

Motoriduttore giracolonna Venezia compatibile

Motoreducer spin-column Venezia - compatible



ART. ZN099012

Raccordo portagomma 2 mm tm3

Rubber holder union 2mm tm3



ART. ZN099012TM1

Raccordo portagomma 2m tm1

Rubber holder union 2mm tm1



ART. ZN099056

Bobina solubili 220 volt 10va 5w

Instant coil 220 volt 10va 5w

NECTA



NECTA



RICAMBI PER DISTRIBUTORI / Spare parts for distributors



ART. ZN099057

Bobina caffè 230 v 14,5va

Electrov.-Coil 220-230v 14,5va



ART. ZN099058

Nucleo elettrov. Solubili ode

Instant e. V. Core - ode



ART. ZN099059

Guarnizione canotto verde

Valve-bush-gasket



ART. ZN099065

Guarnizione a membrana

Ev. Membrane gasket



ART. ZN099066

Ass. Nucleo mobile

Ass. Mobile core



ART. ZN099067

Guarnizione intermedia

Ev. middle gasket



ART. ZN099079

Elettrovalvola 220 v ode

Electrovalve 220v ode



ART. ZN099101

Valvola non ritorno in ot57 per uso alimentare

No-return valve in ot57 for food use



ART. ZN099104

Canotto elettrov. solubili*Instant electrovalve connection pipe*

ART. ZN099152

Lampada 14 w Astro neon*Neon lamp 14w Astro*

ART. ZN099152LED

Lampada 14 w Astro led l=37,5 cm*Led lamp 14w Astro l=37,5 cm*

ART. ZN099397

Motoriduttore 6 g/1 min.*Motoreducer 6 rpm*

ART. ZN099397ALT

**Motoriduttore 10 sec 6g/1 m
compatibile nero***Motoreducer 10 sec. 6 Rpm - compatible
-black*

ART. ZN099470

**Ruota con albero ricambio
adattabile -compatibile***Shaft wheel - compatible and adaptable
spare part*

ART. ZN099473

Portamacina*Grinder holder*

ART. ZN099490

Pistone inferiore*Lower piston*



ART. ZN099528

By-pass pompa (2 bar)

By-pass pump (2 bar)



ART. ZN099617

Motoriduttore 12g/1 min.

Motoreducer 5 sec. 220V 12 rpm -



ART. ZN099617ALT

Motoriduttore 5 sec. 220V.12 G/1 min. compatibile

Motoreducer 5 sec. 220V 12 rpm - compatible



ART. ZN099653

Resistenza 1450w

Heating element 1450w



ART. ZN099658

Pulsantiera spazio

Spazio key board



ART. ZN099732

Motore macinino

Grinder motor



ART. ZN099732ETI

Motore macinino

Grinder motor eti



ART. ZN099746

Calotta inferiore caldaia 600 cc

Lower boiler-cover 600cc-brass



ART. ZN099747

Calotta superiore caldaia 600cc

Upper boiler-cover 600cc-brass



ART. ZN099748

**Guarnizione caldaia spazio
silicone dim. 88,50x3,53**

*Gasket-vers. 600cc spazio boiler silicon
dim. 88,50x3,53*



ART. ZN099847

Guarnizione

Gasket



ART. ZN099880

Or 106 x boccola mixer rif.106

O-ring 106 for bushing mixer



ART. ZN099893

Pompa ulka ep8 230v plastica 2,5bar

Ulka pump ep8 230v plastic 2,5 bar



ART. ZN099915

**Ev 2 vie in polisulfone c/innesto
220v per gruppi**

*2 way electrov. in polysulfone with joint
220v for groups*



ART. ZN0V0070

Pulsantiera a membrana

Membrane control panel



ART. ZN0V0075

Motoriduttore spirali

Spiral motoreducer

NECTA





ART. ZN0V0157
Sonda caldaia solubili
Instant probe temperature



ART. ZN0V0357
Ventilatore spring 850-1000 vm130
Fan for spring 850-1000 vm130



ART. ZN0V0807
Corpo elettrovalvola (per gruppo elettrov)
Electrovalve body (for electrov.Group)



ART. ZN0V0839
Pulsantiera nera per spazio elettrov
Push-button panel "black"



ART. ZN0V1318
Termostato 125 gradi
125 Degr. Thermostat



ART. ZN0V1364
Termostato di sicurezza 105 gradi
105 Degree safety thermostat



ART. ZN0V1434
Raccordo diritto
Straight fitting



ART. ZN0V1434TM1
Raccordo diritto superiore caldaia
Upper boiler straight fitting t.340 dia.5/3 Spec.-Gc1/8 tm1
Upper boiler straight fitting t.340 Dia.5/3 Spec.-Gc1/8 tm1



ART. ZN0V1533

Termostato k50-I3361

K50-I3361 thermostat



ART. ZN0V1654

Chiave interruttore

Switch key



ART. ZN0V1715

Camera infusione con tappo

Brewing chamber with plug



ART. ZN0V1739OLAB

**Gruppo elettrovalvole 2+2+3+2 vie
220v olab**

*2+2+3+2 Ways electrovalve assembly
220v olab*



ART. ZN0V1786

Resistore 25 watt 110/265 v.

25 Watt 110/265 v resistor



ART. ZN0V1928

Microinterruttore ul

Micro switch - ul



ART. ZN0V1930

Microinterruttore "UL"

Micro switch - UL



ART. ZN0V1931

Microinterruttore UL U.M. 5

Micro switch - UL U.M. 5



ART. ZN0V2055

Guarnizione coperchio caldaia

Boiler lid seal



ART. ZN0V2093

Sportello vano erogazione

Dispensing compartment door



ART. ZN0V2132

Pulsantiera a membrana

Membrane-type push-button panel



ART. ZN0V2153

Elettrovalvola solubili

Instant prod. Electrovalve



ART. ZN0V2507

Raccordo a T 6x1/8 con tappo

"T" fitting 6x1/8 with cap



ART. ZN0V2509

Raccordo a L 5x1/8

"L" fitting 5x1/8



ART. ZN0V2549

Motoriduttore 3 g/m 20sec 230v

Motoreducer 3rpm 20sec.230 V



ART. ZN0V2549ALT

Motoriduttore 3 g/m 20sec

Motoreducer 3rpm 20sec.



ART. ZN0V2964

Canotto 2 vie + nucleo

2 Way valve bush+core



ART. ZN0V2966

Canotto 3 vie + nucleo

3 Way valve bush+core



ART. ZN0V3229

Kit spazzole motore

Motorbrush kit



ART. ZN0V3336

Pannello trasparente inferiore

Lower transparent panel



ART. ZN0V3455

Targhetta logo

Logo plate



ART. ZN0V3459

Pulsantiera 12 tasti grigia con tasti argento per snakky, minisnakky

Keyboard 12 keys grey with buttons silver for snakky and minisnakky



ART. ZN0V3492

Sponda cassetto

Drawer edge



ART. ZN0V3500

Spirale destra passo 54 (8 prodotti)

Rh spiral, pitch 54 (8 products)

NECTA





ART. ZN0V3501

Spirale sinistra passo 54 (8 prodotti)

Left spiral, pitch 54 (8 products)



ART. ZN0V3502

Spirale destra passo 34 (13 prodotti)

Rh spiral, pitch 34 (13 products)



ART. ZN0V3503

Spirale destra passo 80 (6 prodotti)

Rh spiral, pitch 80 (6 products)



ART. ZN0V3529

Spirale destra passo 24 (19 prodotti)

Rh spiral, pitch 24 (19 products)



ART. ZN0V3530

Spirale destra passo 46 (10 prodotti)

Rh spiral, pitch 46 (10 products)



ART. ZN0V3531

Spirale destra passo 64 (7 prodotti)

Rh spiral, pitch 64 (7 products)



ART. ZN0V3534

Spirale sinistra passo 46 (10 prodotti)

Left spiral, pitch 46 (10 products)



ART. ZN0V3535

Spirale sinistra passo 64 (7 prodotti)

Left spiral, pitch 64 (7 products)



ART. ZN0V3536

Spirale sx passo 80 (6 prodotti)

Left spiral, pitch 80 (6 products)



ART. ZN0V3537

Spirale destra passo 30 (15 prodotti)

Rh spiral, pitch 30 (15 products)



ART. ZN0V3538

Spirale destra passo 40 (11 prodotti)

Rh spiral, pitch 40 (11 products)



ART. ZN0V3550

**Nucleo elettrovalvola ode polisulfone
2 vie**

*Core for 2 ways ode electrovalve in
polysulfone*



ART. ZN0V3551

Guarnizione a membrana

Membrane



ART. ZN0V3554

Guarnizione o-ring

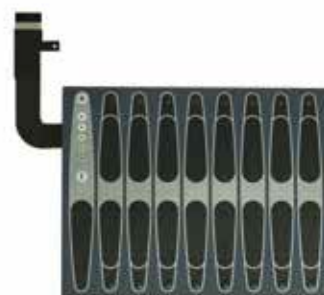
O-ring for instant ev



ART. ZN0V3653

Fermo secchio

Liquid container stop



ART. ZN0V3670

Pulsantiera Kikko

Keypad Kikko



ART. ZN0V3672

Motoriduttore giostra bicchieri Astro

Ratiomotor for Astro cup dispenser



ART. ZN0V3672ALT

Motoriduttore giostra bicchieri Astro compatibile

Ratiomotor for Astro cup dispenser-compatible



ART. ZN0V3725

Motoriduttore 52 giri

Ratiomotor 52 rpm



ART. ZN0V3726

Motoriduttore 78 giri

Ratiomotor 78 rpm



ART. ZN0V4240

Targhetta superiore porta

Upper door label



ART. ZN0V4243

Pulsantiera a membrana preselezioni - zucchero astro

Presel. membrane push-button panel - sugar astro



ART. ZN0V4278

Raccordo -T- 6x1/8

"T" fitting 6x1/8



ART. ZN0V4279

Raccordo -L- 6x1/8

"L" fitting 6x1/8



ART. ZN250009

Pulsantiera 12 tasti nera con tasti argento x snakky, snakky ry, rondò, minisnakky

Push-botton panel "black" with silver buttons for snakky, snakky ry, rondò, minisnakky



ART. ZN250166

Pannello trasparente superiore

Upper transparent panel



ART. ZN250196

Targhetta inferiore porta -nera-

Lower door label - black



ART. ZN250320

Assieme per singola spirale

Assembly for single spiral



ART. ZN250016

Canotto elettrovalvola 3 vie

3 Ways electrovalve pipe



ART. ZN250167

Pannello trasparente inferiore

Lower transparent panel



ART. ZN250197

Pannello trasparente

Transparent panel



ART. ZN250346

Cuscinetto ammortizzatore

Damper bearing



ART. ZN250348

Nucleo elettrov.3 Vie -rubino-
3 Ways electrovalve core - ruby



ART. ZN250516

Taghetta inferiore
Lower label



ART. ZN250550

Pannello policarbonato
Polycarbonate panel



ART. ZN250578

Protezione lampada Snakky
Snakky lamp shield



ART. ZN250740LED

Lampada a led 8w T5 per sfera -
tubo a led T5 8w 6500k l=60cm
Led lamp 8w t5 for sfera - led tube t5 8w
6500k l=60cm



ART. ZN251086

Raccordo rapido 6x1/8" maschio
6X1/8" fast coupling - male



ART. ZN251087

Raccordo rapido 5x1/8" femmina
5X1/8" fast coupling - female



ART. ZN251089

Guarnizione or 29.3X3.6 UI
O-ring 29,3x3,6 UI



ART. ZN251197

Cuscinetto ammortizzatore -
sfera/rondò

Damper bearing sfera/rondò



ART. ZN251321

Spirale destra passo 100 (5 prodotti)

Rh spiral, pitch 100 (5 products)



ART. ZN251532

Kit elettrovalvola singola

Single electrovalve kit



ART. ZN251632

Kit elettrovalvole

Electrovalve kit



ART. ZN251653

Display 2x16 blu

Display 2x16 blu



ART. ZN251656

Display 1x16 blu

Display 1x16 blu



ART. ZN251658

Display 4x20 blu

Display 4x20 blu



ART. ZN251672

Innesto rapido diam.6

Fast coupling diam.6

NECTA



RICAMBI PER DISTRIBUTORI / Spare parts for distributors



ART. ZN252000

Supporto targhette prodotto

Product labels support



ART. ZN252001

Targhetta superiore interfaccia

Interface upper label



ART. ZN252016

Guarnizione a membrana (nuove ode)

Ev. Membrane-gasket (new ode)



ART. ZN252023

Raccordo a t 1/8

1/8 T fitting



ART. ZN252249

Portatarghette superiore

Upper label holder



ART. ZN252250

Portatarghette centrale

Middle label order



ART. ZN252258

Motore traslatore

Translator motor



ART. ZN252364

Nucleo elettrovalvola 3 vie -15 bar-

3 Ways electrovalve core 15 bar



ART. ZN252538

Guarnizione or 2025 canotto
elettrovalvola 3vie

O-ring 2025 -3 way electrovalve-bush



ART. ZN252585

Microinterruttore

Micro switch



ART. ZN252613

Protezione lampada mini snakky

Mini snakky lamp protection



ART. ZN252622

Ventilatore tangenziale

Tangential fan



ART. ZN252873

Lampada al neon 18/54 watt

Neon light 18/54 watt



ART. ZN252873LED

Tubo led t8 60cm 10w 6400k mini -
snakky

Mini snakky led lamp t8 60cm 10w 6400k



ART. ZN253411

Guarnizione or 4112 bianca
28,17mm. x 3,53mm

Gasket o-ring 4112 white - lower piston



ART. ZN253434

Pulsantiera kikko ry

Push-botton panel kikko ry

NECTA



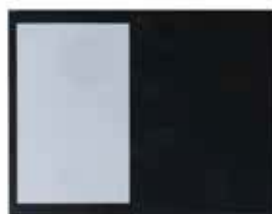
RICAMBI PER DISTRIBUTORI / Spare parts for distributors



ART. ZN253991

Ventolina mixer blu

Blu mixer fan



ART. ZN254028ALT

**Pannello elemento display-
ricambio compatibile e adattabile**

*Display element panel - compatible and
atatable part*



ART. ZN254056

Sonda

Probe



ART. ZN254058

Motodosatore

Motordoser



ART. ZN254059

Motore traslatore bicchiere

Cup transaltor motor



ART. ZN254072

Pompa assieme

Assembly pump (with board)



ART. ZN254254

**Pulsantiera membrana sel.
numerica**

Membrane- type push-button numeric sel.



ART. ZN254426

Motore macinino faston belt

Belt grinder motor - faston -



ART. ZN254469

Macina-16 denti di rottura

Grinder - 16 breaking teeth



ART. ZN254551

Contatore volumetrico d.1.2

Volumetric counter d.1.2



ART. ZN254552

Motoriduttore 24v

Ratiomotor 24v



ART. ZN254553

Motoriduttore

Ratiomotor



ART. ZN254554

Motoriduttore 24v 16rpm

Microswitch 24v 16rpm



ART. ZN254660

Microinterruttore

Microswitch



ART. ZN254711

**Guarnizioni viton verde resistenza
or 112 2.6x9.92**

*Gasket o-ring 112 green 2,62x9,92 -
heating element*



ART. ZN254807

Motoventilatore 16watt 50/60hz

Electric fan 16 watt 50/60 hz

NECTA





ART. ZN254842

Motore frullatore con scheda

Motor mixer with board



ART. ZN255248

Sonda temperatura

Temperature probe



ART. ZN255249OLAB

Gruppo 4ev olab per concerto

4 Ev ass. Olab for concerto



ART. ZN255396

Raccordo a T 1/8

"T" fitting 1/8



ART. ZN258852

Contatore volumetrico d=1.2 90 Gradi

Volumetric counter d=1.2 90 Degrees



ART. ZN259660

Cablaggio per micro sgancio dose con faston piccoli

Micro connector for dose release with little fastons



ART. ZN259699

Cablaggio riduttore faston maschio-connettore

Reducer wiring - male faston - connector



ART. ZN259699F

Cablaggio riduttore faston femmina-connettore

Reducer wiring - female faston - connector



ART. ZN259898

Nuova sonda temperatura-tornita-ricambio compatibile

New temperature probe - tornd - compatible



ART. ZN259898ORIG

Nuova sonda temperatura -tornita

New temperature probe - tornd



ART. ZN259912OT57

Gruppo 3ev. 2+3+2 vie inserti e canotti inox e bassetta in ot57

3 Solenoid valve ass. 2+3+2 Way 230v 50hz with stainless steel sleeve and insert -base plate in ot57



ART. ZN259912SBOB

Gruppo 3ev senza bobine cannotti e inserti inox 316 e bassetta in ot57

3 Solenoid valve without coils - stainless steel 316 insert and sleeve -base plate in ot57



ART. ZN259917OT57

Gruppo 4ev. 2+2+3+2 vie-inserti e canotti inox e bassetta in ot57

4 Sol. valve ass. 2+2+3+2 way 230v 50hz stainless steel insert and sleeve -base plate in ot57



ART. ZN259917SBOB

Gruppo 4ev. senza bobina inserti e canotti inox e bassetta e nucleo in ot57

4 sol. valve ass. 2+2+3+2 way 230v 50hz without coil - stainless steel insert and sleeve-base plate and core in ot57



ART. ZN259928OLAB

Gruppo 5ev Olab per opera

5 Sol. valve ass. Olab for opera



ART. ZN260364

Basetta 3 ev con inserti inox in ottone ot57 per uso alimentare

3 Sol. Valve base plate in brass ot57 for food use with stainless steel insert



ART. ZN260365

Basetta 4 ev con inserti inox in ottone ot57 per uso alimentare

4 Sol. Valve base plate in brass ot57 for food use with stainless steel insert



ART. ZN298092

Canotto elettrov.Solubili-high performance-

Instant electrovalve connection pipe highbperformance



ART. ZN298093

Canotto elettrov. caffè-high performance-

Coffee electrovalve connection pipe high performance



ART. ZN985408

Piattina filettata

Treaded disc



ART. ZN985532LED

Tubo led T8 120cm 20w 6400k diesis rondo sfera smart snakky /sl/max

Led lamp t8 120cm 20w 6400k diesis rondo sfera smart snakky /sl/max



ART. ZN987828

Ventilatore

Fan



ART. FS17000069A

O-ring orm 0120-30 viton

O-ring orm 0120-30 viton



ART. FS310315

Neon leonardo fast 21w 50-60hz
230 classica reglette leo 28502

*Neon leonardo fast 21w 50-60hz 230
classic reglette leo 28502*



ART. FS400757

Copertura in lexan rinf.Panzer

Lexan covering reinforced for panzer



ART. FS401080

Copertura frontale skudo1050 antiv.

Lexan front protection skudo 1050



ART. FS401083

Copertura frontale skudo900
antiv.

Lexan front protection skudo 900



ART. FS420067

Vetrocamera 117,6 x 62,6x 0,77
(22) Faster

*Insul. glass 1176x626x22 3+3/12/4 be ar.
Faster*



ART. FS420068

Vetrocamera 3+3/12/4 bear
1176x775x

Glass 3+3/12/4 be ar 1176x775x22



ART. FSC700049

Macina piana d.63,5 Keber
mod.0334

Plane mill 63,5 keber mod. 0334

FAS



RICAMBI PER DISTRIBUTORI / Spare parts for distributors



ART. 1X079018

**Elettrovalvola nich 230/50 3vie+p -
tg x Pininfarina M&M**

*Solenoid valve nich. 230V/50 3v for
Pininfarina M&M*



ART. 1X079018OLAB

**Ev 3vie f-f g1/8-g1/8 dn1.5
230V-50hz**

*3 Way solenoid valve f-f g1/8-g1/8 dn1.5
230V-50hz*



ART. 1X079018ORIG

**Elett.Nich 230/50 3vie+ptg x
Pininfarina**

*Solenoid valve nich. 230V/50 3way for
Pininfarina*



ART. 1X079025

Fianco dx pfe

Side panel rh pfe



ART. 1X079026

Fianco sx pfe

Side panel lh pfe



ART. 1X079028

Retro ep pfe

Back ep pfe



ART. 1X079035ALT

**Leva ep. P. non serigrafata -ricam
bio adattabile e compatibile-**

*Lever pfe not silk-screened - adaptable
and compatible spare part*



ART. 1X079042

Molla per ganascino sx pfe

Spring for jaw lh



ART. 1X079043

Molla per ganascino dx pfe*Spring for jaw rh*

ART. 1X079062

Circuito tastiera Pininfarina*Circuit for keyboard pfe*

ART. 1X079120

**Membrana mm. 300 X 53 - circuito
x tastiera ep. P dosatore***Membrane mm. 300X53 - circuit for
keypad ep - ep+batcher*

ART. 1X079225

Termostato 100° faston 3,2 mm 90°*Thermostat 100°C campini*

ART. 1X079944

**Pompa olab 20bar 230v 50hz in
ottone tipo Ex4***Olab pump Ex4 20 bar 230v 50hz in brass*

ART. 1X079944ULKKA

**Pompa ulka ex4gw a 20bar 230v
50hz in ottone***Ulka pump ex4 20 bar 230v 50hz in brass*

ART. 1X079944ULKARED

**Pompa ulka ex4 rossa 20bar 230v
50hz in ottone***Ulka pump ex4 red 20 bar 230v 50hz in
brass*

ART. 1X085033A

**Cornicetta silicone rosso ns.
versione***Heating plate gasket red our version -
compatible spare part*

LAVAZZA



RICAMBI PER DISTRIBUTORI / Spare parts for distributors



ART. 1X085043

Membrana silicone trasparente
-ricambio compatibile

Transparent silicon membrane - compatible spare part



ART. 1X085043A

Membrana silopren rossa nostra
versione

Red silopren membrane - our version



ART. 1X085049

Molla ganascino dx

Spring for jaw rh



ART. 1X085051

Mollone inox espresso point

Spring inox espresso point



ART. 1X085069

Micro

Microswitch



ART. 1X085078

Termostato di max 41-145

Thermostat of max 41-145



ART. 1X085159

Molla ganascino sx

Spring for jaw lh



ART. 1X086081

Guarnizione gaco

Gasket gaco



ART. 1X087308

Or 6200 silicone 70 sh

O-ring 6200 silicone 70 sh



ART. 1X088088

Molla per ganascino sx ecl conf.25

Spring for jaw lh ecl pack.25



ART. 1X088092

Molla per ganascino dx ecl conf 25

Spring for jaw rh ecl pack.25



ART. 1X088106A

Or silicone 79x2 nostra versione

O-ring silicone 79x2 our version



ART. 1X63079

Guarnizione a labbro -ricambio adattabile e compatibile-

Lip seal - adaptable and compatible spare part



ART. 1X65391

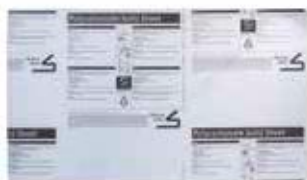
Cilindro superiore teflonato

Upper cylinder ptfе coated

LAVAZZA



MANEA



ART. MANEA5001560

Lexan porta msx-estreme strong plus 8 mm

Lexan door msx-estreme strong plus 8 mm



ART. MANEA5001605

Lexan led colori

Lexan led colors



ART. MANEA8200018

Motoriduttore singolo manea

Manea single motodoser



ART. MANEA8801500

Vetro porta msx-hxtreme 714x1210

Door glass msx-hxtreme 714x1210

RHEA



ART. RE0110004021

Pompa ulka ex7 per basexs

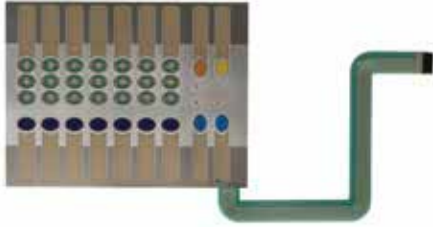
Ulka pump ex7 for xs base



ART. REELE0000969

Sonda espresso senza dado

Express probe without nut



ART. CE0870642

Targa pulsantiera sg500blu+silver

Touch panel data plate g 500 blue



ART. CE11003739

Turbina 974-9502/b d.1,8Mm digmesa

Edging flowmeter nv99.067



ART. CE11007580

Res. cald. 230V.1000 W. compatibile

Boiler heating-element 230v 1000w compatible



ART. CE147920150

Raccordo a 90 gradi pompa ulka pipetta pompa E

90° Inlet pump connector



ART. CE9121009

Motore con ventola 7p 230v

Motor with fan 230v 7p



ART. CE912119800A

Ventilatore centrifugo cap 07

Centrifugal fan cap 07



ART. CE9141081

Macina piana d 43 1016 tit

Flat mill d.43 1016 Titanium



ART. CENE13066

Sonda di temperature assiema

Temperature probe ass.

SA.GA



SA.GA



RICAMBI PER DISTRIBUTORI / Spare parts for distributors



ART. CENM01014

Or 177 silicone

Or 177 silicon



ART. CENV99001

Filtro in aspirazione

Aspiration filter



ART. CENV99099

Turbina 932-9521/b diam.1,2Mm
digmesa

*Digmesa turbine d=1,2mm 932-9521/b
assy.*



ART. UK801022

Antivibrante a squadra

"L" anti-vibrating



ART. UNI0017

Compressore gp12tb electrolux
r134a

Electrolux compressor gp12tb r134a



ART. UNI0018

Compressore GL90TB Electrolux
R134A

Electrolux compressor GL90TB R134A



ART. UNI0019

Gl60tb/mor electrolux morsettiera
AAAC2335A

*Gl60tb/mor electrolux terminal board
AAAC2335A*



ART. UNI0020

Gl70aa/mor 220/1/50 Electrolux

Gl70aa/mor 220/1/50 Electrolux



ART. UNI0024

Filtro a saldare 2h3 30gr 6,5x2,5
(deidratore) GEXX1060A

*Solder filter 2h3 30gr 6,5x2,5 (drier)
GEXX1060A*



ART. UNI0025

Manicotto in rame f/f 6mm
KCXX1005A

Copper sleeve f/f 6mm KCXX1005A



ART. UNI0029

Kit 10 valvole di servizio vc-500-02
PXXX1063A 292073

*Kit 10 service valve vc-500-02
PXXX1063A 292073*



ART. UNI0047

Compressore gl80tb Electrolux

Electrolux compressor gl80tb

FRIGO



ART. UNI0048

AE4440y compressore tecumseh

Tecumseh compressor AE4440y



ART. UNI0052

Condensatore d'avviamento 88/108 mf 330+faston c/coperchio mont.

Starting condenser 88/108 mf 330+faston with lid



ART. UNI0054

Compressore gp16tb Electrolux 740762AAAC3670A

Electrolux compressor gp16tb 740762AAAC3670A



ART. UNI0100

Curva rame m/f 6mm

Copper curve m/f 6mm



ART. UNI0109

Compressore aspera NEK6170Z

Aspera compressor NEK6170Z



ART. UNI0120

Compressore nek6210gk 220/50 imb sing

Compressor nek6210gk 220/50 imb sing



ART. UNI0121

Compressore ermetico nek6214z 220/240-1-50

Ermetic compressor nek6214z 220/240-1-50



ART. UNI0130

Pettine per alette evaporatore

Comb for evaporator fins