



SENNHEISER



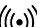





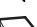

# MOMENTUM 4

Model: M4AEBT

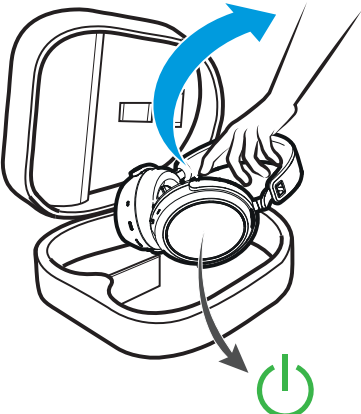


EN Quick Guide  
DE Kurzanleitung  
FR Guide rapide  
ES Instrucciones resumidas  
PT Guia rápidos  
NL Beknopte handleiding  
IT Guida rapida  
DA Kort vejledning  
SV Snabbguide  
FI Pikaohje  
EL Σύντομες οδηγίες  
PL Krótka instrukcja obsługi  
TR Kısa Kılavuz  
RU Краткая инструкция  
JA クイックガイド

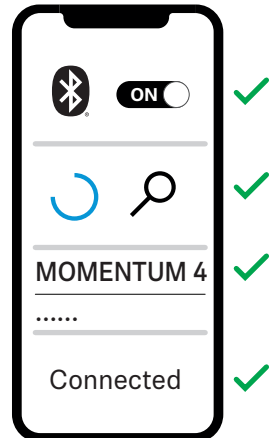
ZH-HANS 快速指南  
ZH-HANT 快速指南  
KO 빠른 안내서  
ID Panduan ringkas  
ET Lühijuhend  
LV Īsā instrukcija  
LT Trumpoji naudojimo instrukcija  
CZ Stručný návod  
SK Stručný návod  
HU Rövid útmutató  
RO Instrucțiuni succinte  
BG Кратко ръководство  
SL Kratka navodila  
HR Kratke upute

-  Charging ..... 3
-  Power on / Power off ..... 4
-  Pairing ..... 5
-  Music control ..... 6
-  Call control ..... 7
-  Adaptive Noise Cancellation ..... 8
-  Transparency Mode ..... 9
-  Voice assistant ..... 10
-  Package includes ..... 11
-  Troubleshooting ..... 12


**1.**





**2.**




**3.**

 **Smart Control**

 GET IT ON  
Google Play

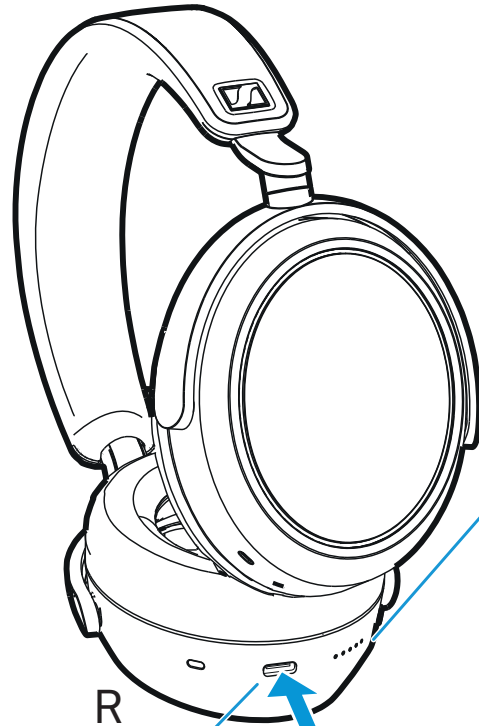
 Download on the  
App Store



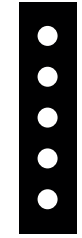
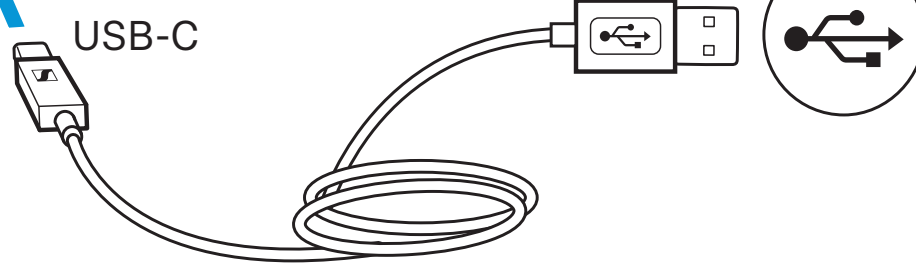





### Charging

- DE Laden
- FR Charger
- ES Cargar
- PT Carregar
- NL Opladen
- IT Caricare
- DA Opladning
- SV Laddning
- FI Lataaminen
- EL Φόρτιση
- PL Ładowanie
- TR Şarj etme
- RU Зарядка
- JA 充電
- ZH-HANS 充电
- ZH-HANT 充電
- KO 충전
- ID Mengisi daya
- ET Laadimine
- LV Uzlādēšana
- LT Įkrovimas
- CZ Nabíjení
- SK Nabíjanie
- HU Az akkumulátor feltöltése
- RO Încărcarea
- BG Зареждане
- SL Polnjenje
- HR Punjenje



USB-C

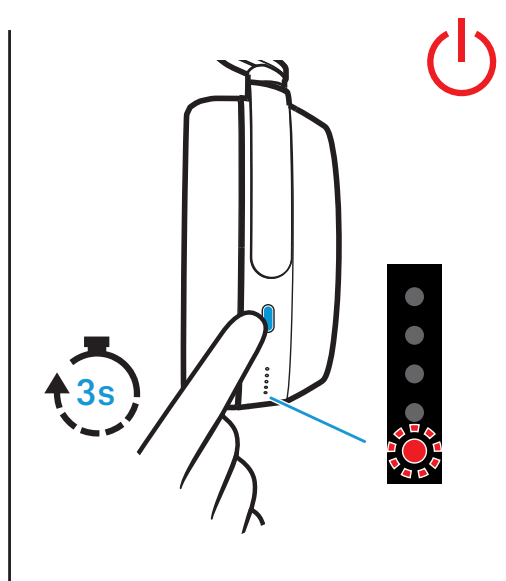
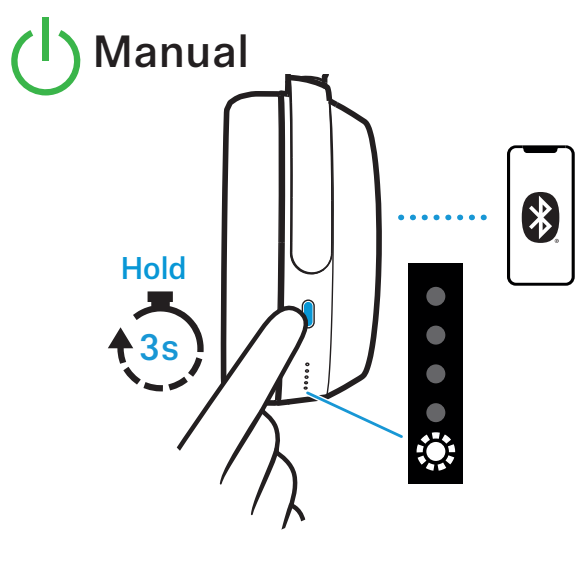
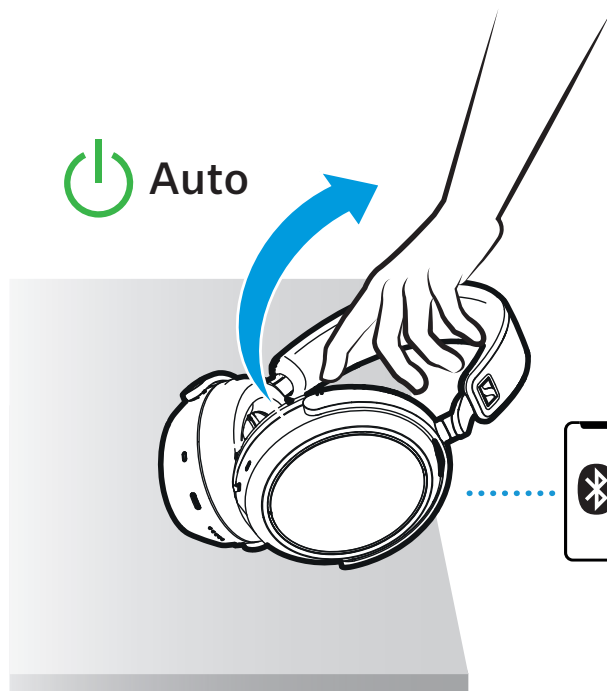



  
 up to 3 hrs
   
  
 up to 60 hrs



### Power on / Power off

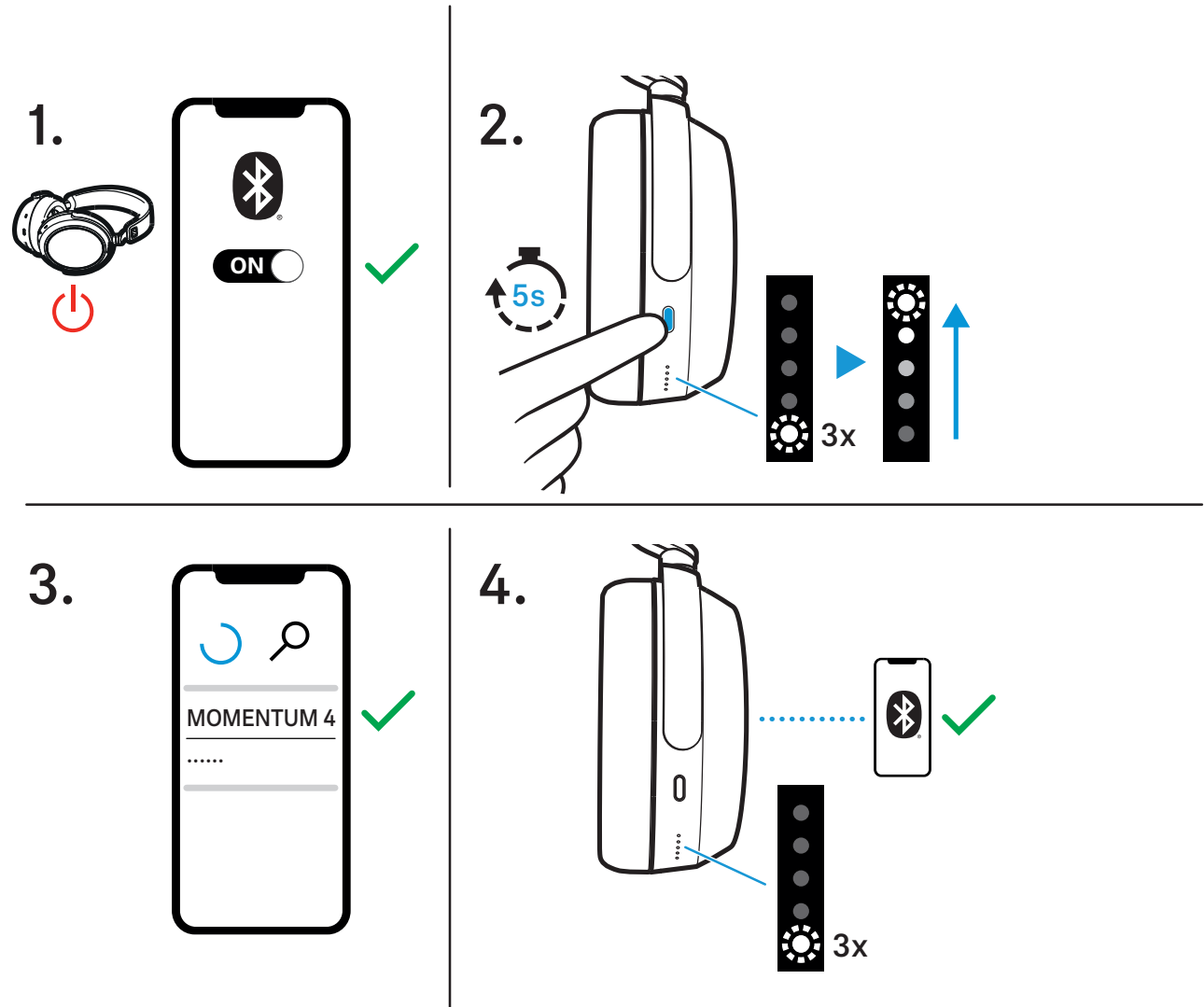
- DE Einschalten/Ausschalten
- FR Allumer / éteindre
- ES Encender / Apagar
- PT Ligar/desligar
- NL Inschakelen/uitschakelen
- IT Accendere/Spegnere
- DA Tænd/sluk
- SV Sätta på/stänga av
- FI Virran kytkeminen ja katkaiseminen
- EL Ενεργοποίηση / απενεργοποίηση
- PL Włączenie / wyłączenie
- TR Açma/Kapatma
- RU Включение/выключение
- JA スイッチのオン/オフ
- ZH-HANS 接通/关闭
- ZH-HANT 接通 / 關閉
- KO 켜기/끄기
- ID Mengaktifkan/menonaktifkan
- ET Sisse-/väljalülitamine
- LV Ieslēgšana/izslēgšana
- LT Įjungimas ir išjungimas
- CZ Zapnutí/vypnutí
- SK Zapnutie/vypnutie
- HU Bekapcsolás/kikapcsolás
- RO Pornirea/oprirea
- BG Включване/Изключване
- SL Vkllop/izklop
- HR Uključivanje/isključivanje





### Pairing

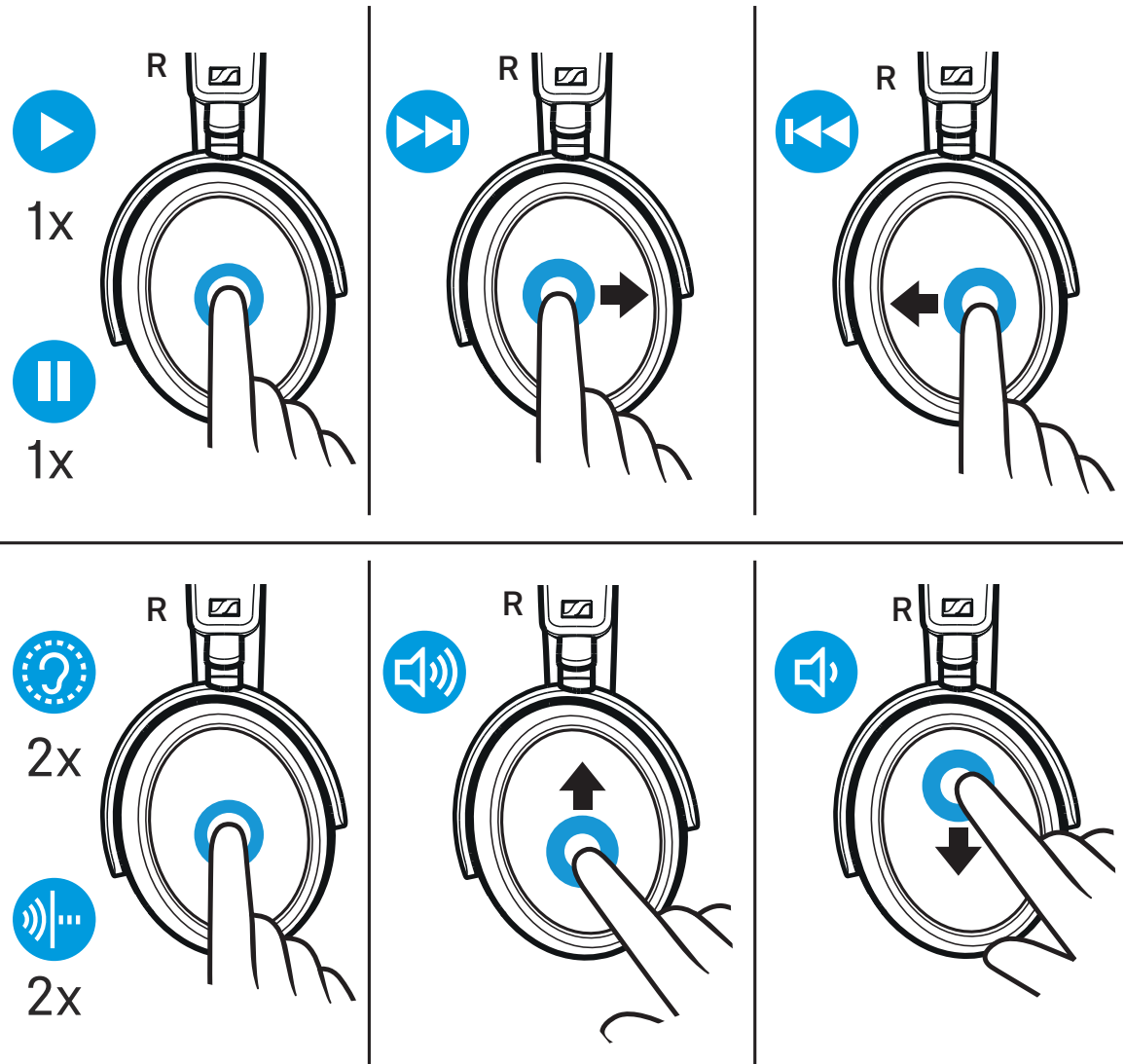
- DE Koppeln
- FR Appairer
- ES Sincronizar
- PT Emparelhar
- NL Koppelen
- IT Accoppiare
- DA Parring
- SV Parkoppla
- FI Pariliitoksen muodostaminen
- EL Ζεύξη
- PL Parowanie
- TR Eşleşirme
- RU Сопряжение
- JA 連結
- ZH-HANS 配对
- ZH-HANT 配對
- KO 페어링
- ID Menyandingkan
- ET Sidumine
- LV Pieslēgšana
- LT Susiejimas
- CZ Připojení
- SK Spárovanie
- HU Párosítás
- RO Cuplarea
- BG Сдвояване
- SL Seznanjanje
- HR Uparivanje





### Music control

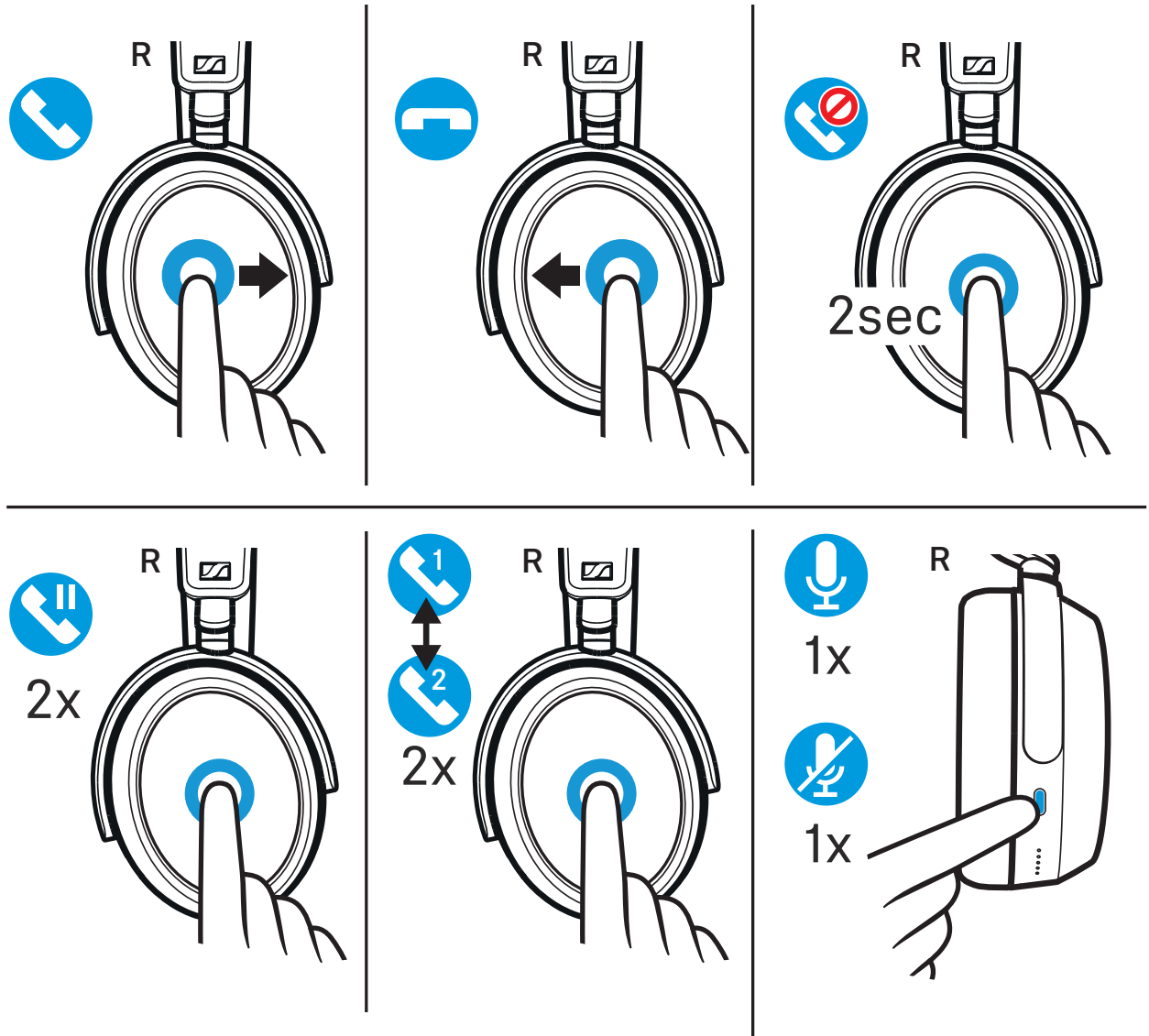
- DE Musiksteuerung
- FR Contrôle de la musique
- ES Control de música
- PT Controlo/Controle da música
- NL Muziekbediening
- IT Gestione della musica
- DA Musikstyring
- SV Musikstyrning
- FI Musiikin toiston ohjaus
- EL Χειρισμός αναπαραγωγής μουσικής
- PL Sterowanie muzyką
- TR Müzik kumandası
- RU Управление воспроизведением музыки
- JA 音楽制御
- ZH-HANS 音乐控制器
- ZH-HANT 音樂控制器
- KO 음악 제어
- ID Pengaturan musik
- ET Muusika juhtimine
- LV Mūzikas atskaņošanas vadīšana
- LT Muzikos valdymas
- CZ Ovládání hudby
- SK Ovládanie hudby
- HU Zenevezérlés
- RO Comandă muzică
- BG Управление на музика
- SL Nadzor glasbe
- HR Upravljanje glazbom





### Call control

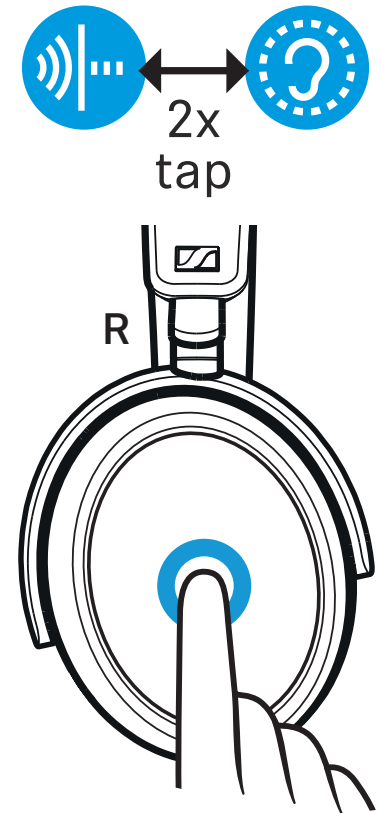
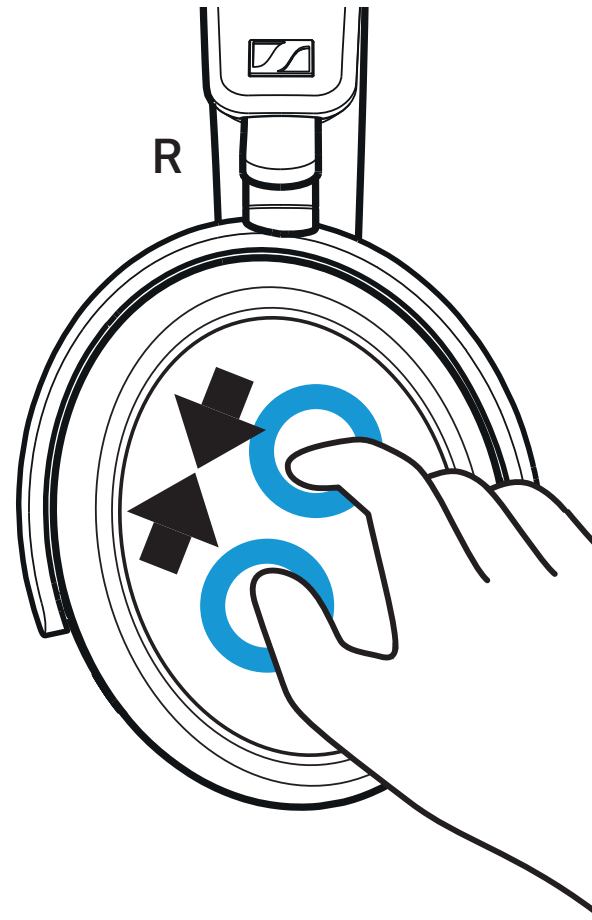
- DE Anrufsteuerung
- FR Contrôle des appels
- ES Control de llamadas
- PT Controlo/Controle de chamadas
- NL Belbesturing
- IT Gestione delle chiamate
- DA Opkaldsstyring
- SV Samtalsstyrning
- FI Puhelujen ohjaus
- EL Χειρισμό κλήσεων
- PL Sterowanie rozmowami telefonicznymi
- TR Çağrı kontrolü
- RU Управление вызовами
- JA 電話制御
- ZH-HANS 来电控制器
- ZH-HANT 來電控制器
- KO 통화 제어
- ID Pengaturan panggilan
- ET Kõnede juhtimine
- LV Zvanu vadīšana
- LT Skambučių valdymas
- CZ Ovládání hovorů
- SK Ovládanie hovoru
- HU Hívásvezérlés
- RO Comandă apeluri
- BG Управление на обаждания
- SL Nadzor klicev
- HR Upravljanje pozivima





## Adaptive Noise Cancellation

- DE Aktive Geräuschunterdrückung
- FR Annulation active du bruit
- ES Atenuación activa del ruido
- PT Controlo/Controle ativo de ruído
- NL Actieve ruisonderdrukking
- IT Soppressione attiva dei rumori
- DA Aktiv støjundertrykkelse
- SV Aktiv brusreducering
- FI Aktiivinen melunvaimennus
- EL Ενεργή καταστολή θορύβου
- PL Aktywne tłumienie hałasu
- TR Etkin Gürültü Bastırma
- RU Система активного шумоподавления
- JA アクティブノイズキャンセリング
- ZH-HANS 主动降噪
- ZH-HANT 主動降噪
- KO 능동 소음 억제
- ID Peredaman kebisingan aktif
- ET Aktiivne mürasummutus
- LV Aktīvā trokšņu slāpēšana
- LT Aktyvusis triukšmo slopintuvas
- CZ Aktivní potlačení šumu
- SK Aktivne potlačenie šumu
- HU Aktív zajszűrés
- RO Funcția activă de blocare a zgomotelor
- BG Активно шумозаглушаване
- SL Aktivna zadušitev zvoka
- HR Aktivno suzbijanje buke

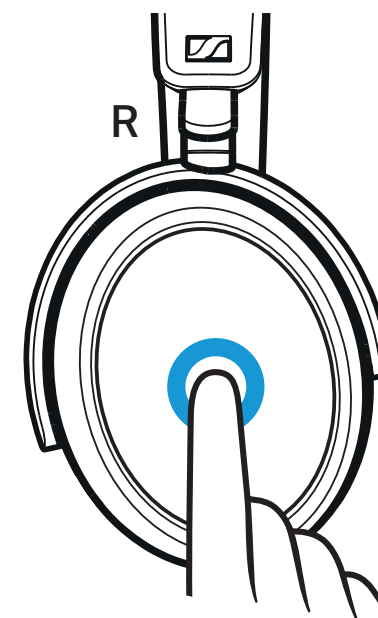
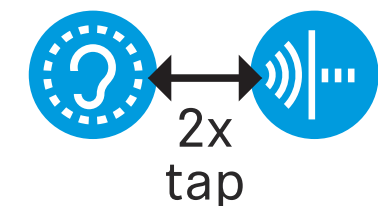
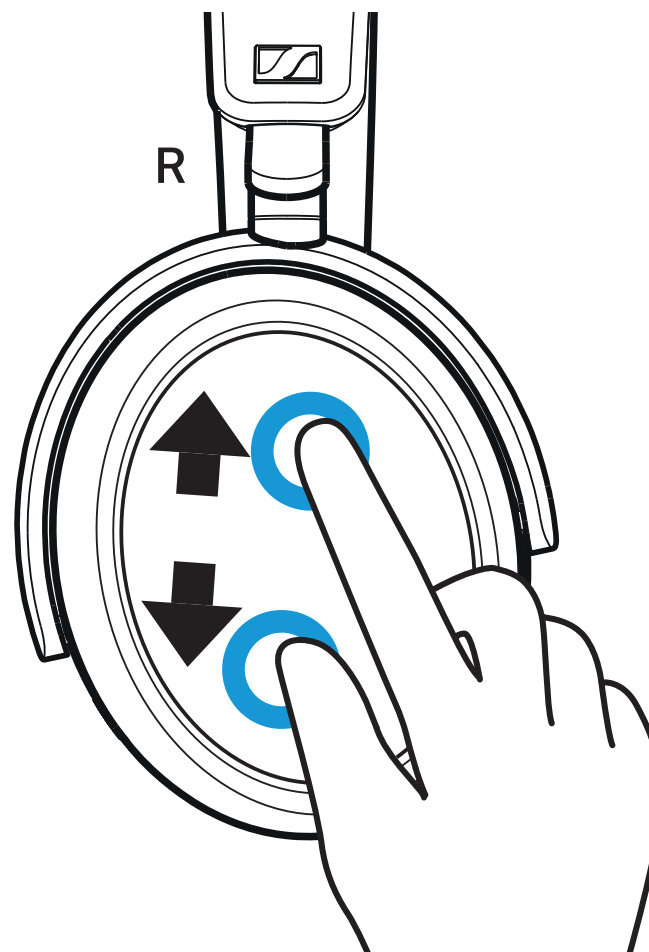






## Transparency Mode

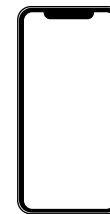
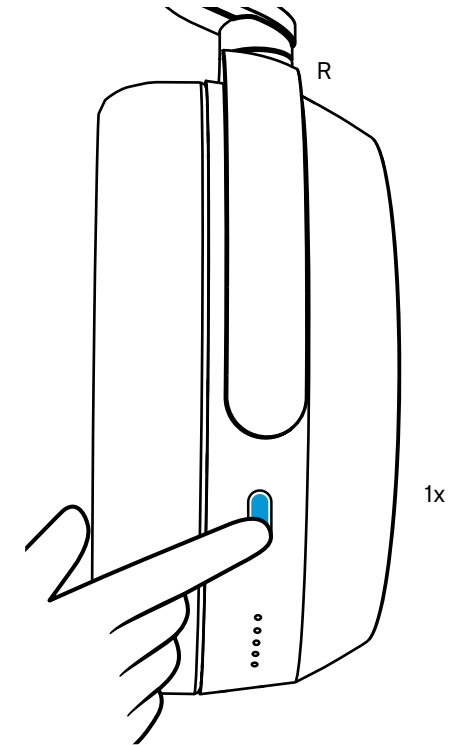
- DE Hören von Umgebungsgeräuschen
- FR Écouter les bruits ambiants
- ES Escuchar el ruido ambiental
- PT Escutar ruídos externos
- NL Horen van omgevingsgeluiden
- IT Ascolto di rumori ambientali
- DA Lyd fra omgivelserstøj
- SV Lyssna på bakgrundsljud
- FI Ympäristön äänien kuuluvuus
- EL Ακρόαση θορύβων περιβάλλοντος
- PL Słyszanie dźwięków z otoczenia
- TR Çevre seslerini dinleyin
- RU Пропускание шумов окружающей среды
- JA 周辺ノイズを聞きます
- ZH-HANS 环境噪音控制
- ZH-HANT 控制環境噪音
- KO 주변 소리 듣기
- ID Mendengarkan suara di sekitar
- ET Keskkonnamüra kuulmine
- LV Apkārtējā trokšņa dzirdamība
- LT Aplinkos triukšmo klausymasis
- CZ Poslech okolních zvuků
- SK Počúvanie okolitých zvukov
- HU Környezeti zaj vagy beszélgetés hallgatásának beállítása
- RO Auzirea zgomotelor ambiante
- BG Чуване на околния шум
- SL Poslušanje zvokov iz okolice
- HR Slušanje okolinske buke





## Voice assistant

- DE Sprachassistent
- FR Assistant vocal
- ES Asistente personal
- PT Assistente de voz
- NL Spraakassistent
- IT Assistente vocale
- DA Taleassistent
- SV Röstassistent
- FI Puheavustaja
- EL Φωνητικός βοηθός
- PL Asystent głosowy
- TR Sesli asistan
- RU Голосовой помощник
- JA 言語アシスト
- ZH-HANS 语音助手
- ZH-HANT 語音助手
- KO 음성 어시스턴트
- ID Bantuan bahasa
- ET Häälassistent
- LV Balss asistents
- LT Kalbos pagalbiklis
- CZ Průvodce výběrem jazyků
- SK Hlasový asistent
- HU Beszédasszisztens
- RO Asistent de limbă
- BG Езиков асистент
- SL Pomocnik za govor
- HR Govorni asistent

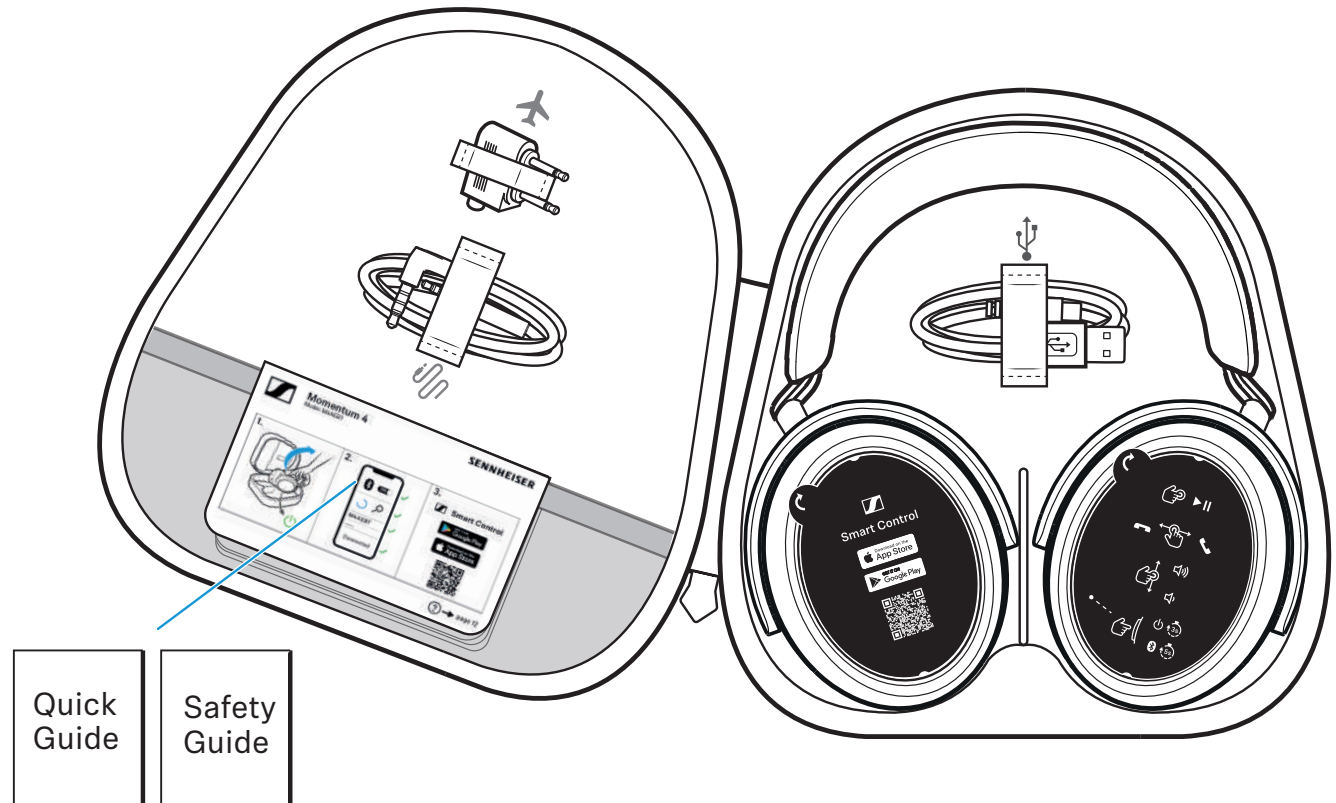


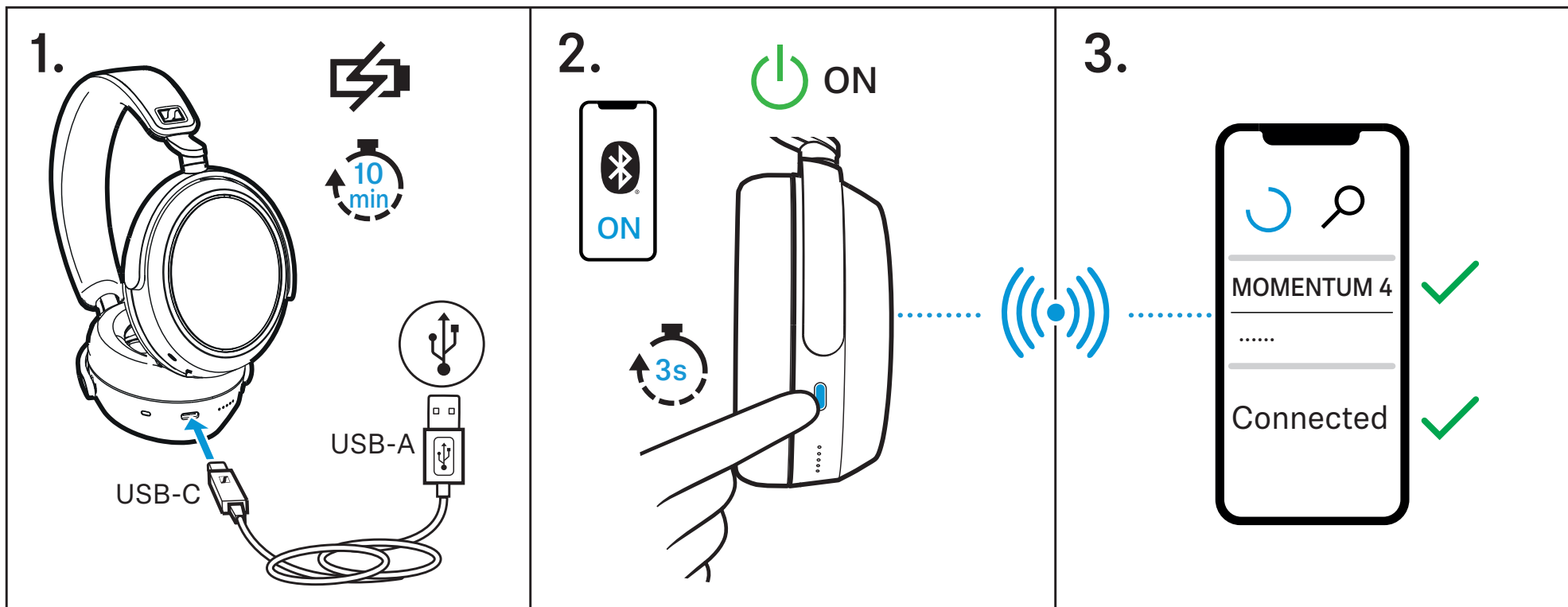
Siri, Google Assistant, ...



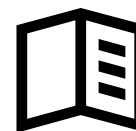
## Package includes

- DE Lieferumfang
- FR Contenu
- ES Volumen de suministro
- PT Material fornecido
- NL Omvang levering
- IT In dotazione
- DA Leveringsomfang
- SV Leveransomfattning
- FI Toimitussisältö
- EL Περιεχόμενα συσκευασίας
- PL Zakres dostawy
- TR Teslimat kapsamı
- RU Комплект поставки
- JA 同梱されているもの
- ZH-HANS 包装内含
- ZH-HANT 包裝包括
- KO 구성품
- ID Isi kemasan
- ET Tarnekomplekt
- LV Komplektācija
- LT Tiekiamas komplektas
- CZ Obsah dodávky
- SK Rozsah dodávky
- HU Szállított tartozékok
- RO Conținutul pachetului de livrare
- BG Обем на доставката
- SL Obseg dobave
- HR Opseg isporuke





Sonova Consumer Hearing GmbH  
 Am Labor 1, 30900 Wedemark, Germany  
[www.sennheiser-hearing.com](http://www.sennheiser-hearing.com)  
 Publ. 10/22, 595515/A03



Manual and support  
[www.sennheiser-hearing.com/download](http://www.sennheiser-hearing.com/download)

