

P | F



—
PRICELIST

Range

—
SALAMANCA



Range

SALAMANCA

The SYDNEY round table can easily be recognized by the metal detail on the curved leg. The leg provides plenty of space for chairs all the way around and the table also comes in versions with extension – with room for 4 leaves.

Designed by

This range include

Dining tables

Features



Design elements

Choose between with or without extension and several different edge profiles.



Custommade

In addition to our many standard sizes we can accommodate special requests.



Wood colours

Choose between more than 10+ different wood colours in both ash and oak.




Sustainable choice

Solid wood furniture can last a lifetime with proper maintenance.

Social media

Follow and share with us on Instagram.

 @podfurniture |

Pricelist- and Aftercare



Pricing List

The following document will outline the pricing for various dimensions, stains, and wood type.



Aftercare

After care is an important element to keep your table in the best possible condition.

PRICELIST

Round Dining Table (undivided)



Price: Round dining table w/undivided plate (H: 74 cm, plate thickness 3 cm)		
Description	Item no.	Price
Undivided plate Ø160	SN3H-160	
Undivided plate Ø150	SN3H-150	
Undivided plate Ø140	SN3H-140	
Undivided plate Ø130	SN3H-130	
Undivided plate Ø120	SN3H-120	

PRICELIST

Round Dining Table (extendable)

The extension system is hidden when not in use.



Price: Round dining table w/devided plate (H: 74 cm, plate thickness 3 cm)		
Description	Item no.	Price
Ø160 Extension for 4 leaves*	SN3M-160	
Ø150 Extension for 4 leaves*	SN3M-150	
Ø140 Extension for 4 leaves*	SN3M-140	
Ø130 Extension for 4 leaves*	SN3M-130	
Ø120 Extension for 4 leaves*	SN3M-120	

* Comes with 2 support legs

Leaves - For tables with devided plate (Solid wood, plate thickness 3 cm)		
Description	Item no.	Price
Ø160 Leaf 50x160 cm	SNT3-160	
Ø150 Leaf 50x150 cm	SNT3-150	
Ø140 Leaf 50x140 cm	SNT3-140	
Ø130 Leaf 50x130 cm	SNT3-130	
Ø120 Leaf 50x120 cm	SNT3-120	

WOOD COLOURS



ASH C3 / OAK C3
Lacquered

We treated this wood with lacque.

C3 are only made for products without patination.



ASH C4 / OAK C4
Natural oiled

We treated this wood with our 'Natural oil'.



ASH C6 / OAK C6
White oiled

We treated this wood with our 'White oil'.



ASH C8 / OAK C8
Soaped

We treated this wood with soap.



ASH C11 / OAK C11
Dark grey oiled

We treated this wood with our 'Dark grey oil'.



ASH C12 / OAK C12
Antique brown oiled

We treated this wood with our 'Antique brown oil'.



ASH C13 / OAK C13
Light grey oiled

We treated this wood with our 'Light grey oil'.



ASH C14 / OAK C14
Black stained & oiled

We treated this wood with black stain, and treated it with a wax oil.

C14 is for legs and storage furniture only!



ASH C15 / OAK C15
Mocca brown oiled

We treated this wood with our 'Mocca brown oil.'



ASH C16
Warm white oiled

We treated this wood with our 'Warm white oil'.

C16 is only for ash



ASH C20 / OAK C20
Grey brown oiled

We treated this wood with our 'Grey brown oil'.



ASH C44 / OAK C44
Black matt lacquered

We treated this wood with black stain, and treated it with matt lacque.

C44 is only for plates and can only be made for products without patination.



For more information about maintenance, please visit our website:

WWW.PODFURNITURE.COM



Oil stain available upon request

WOOD FINISH



UP

Without patination
The wood is planned and sanded to achieve a smooth surface.

With few and smaller knots.

Storage furniture can only be made with this finish!

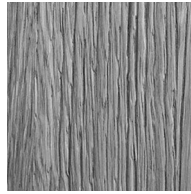


SC

Soft Cracks

Naturally occurring cracks are made more visible which gives wood a rustic look with cracks in the wood that has been roughened by natural wear.

May contain more and larger knots.



RL

Raw Look

We brush off the layer of softer wood which gives a look of a rustic look with cracks in the wood that has been roughened by natural wear.

May contain more and larger knots.



FK

Filled Knots

The knots are filled and the wood is planned and sanded to achieve a smooth surface.

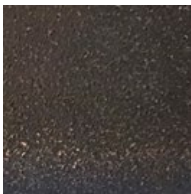
Only for OAK!

AP

Antique patination
Scratches and other fake signs of wear is added to give the wood a patinated look as if the wood has been worn.

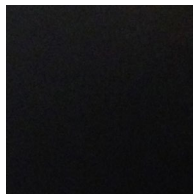
May contain more and larger knots.

METAL COLOUR & FINISH



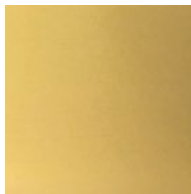
Vintage Copper look

Leg detail in a rustic/tactile Vintage Copper look.



Black look

Leg detail in black matt powder coat steel.



Brass look

Leg detail with a smooth brushed brass look.

EDGE PROFILES



1

Harlekin edge



2

Arched edge



3

Rounded edge



4

Straight edge