



# WATER COOLER USER'S MANUAL

Thank you for purchasing a Brio water cooler. Please read this user's manual thoroughly for using the water coolers safely and appropriately.

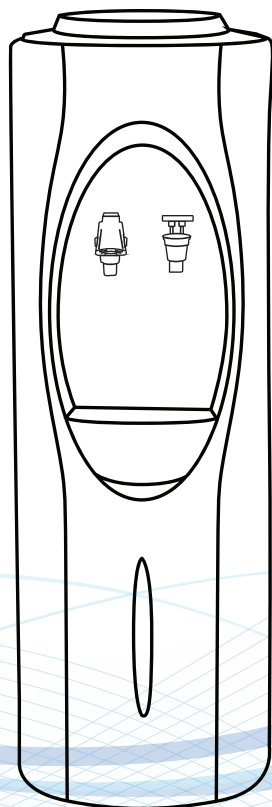
## **CBP500 Premiere Series Top-Load Coolers**

CBP500: Hot & Cold, White

CBP505: Cook & Cold, White

CBP520: Hot & Cold, Black

CBP525: Cook & Cold, Black



# SAFETY PRECAUTIONS

- Plug in the dispenser in the way described in this manual.
- In accordance with these instructions, the dispenser must be properly located and installed before use
- Use only water. Do not use coffee, tea or other beverages.
- Dispenser must be unplugged before cleaning, sanitizing or repairing. Regular cleaning is advised to ensure satisfactory water quality.
- Wipe any water spills after loading or unloading water bottles.
- Do not use with water that is microbiologically unsafe or of unknown quality.
- periodically remove dirt and lint from the condenser on the back of the cooler.

**WARNING:** The hot water is heated to approximately 90°C (194°F). Temperatures above 52°C (125°F) can cause severe burns from scalding. **DO NOT ALLOW CHILDREN TO USE THE HOT WATER DISPENSING BUTTON WITHOUT PROPER AND DIRECT SUPERVISION.**

- Ensure the dispenser stands upright for 2 hours before loading water bottle, plugging in or turning the unit on.
- Always lift dispenser by handle located on rear of unit. **DO NOT** Lift dispenser by the faucets, this part of the cooler may break and cause leaks if pulled by force.
- Supervise children when using the dispenser; water from hot faucet will be extremely hot and may scald.
- The recommended placement of the water dispenser is indoors. Keep away from direct sunlight and excessive moisture

**WARNING:** The dispenser must be grounded – if the appliance is improperly grounded, it may result in an electric shock

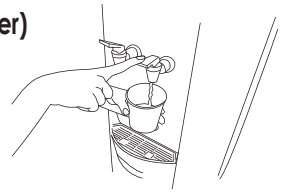
**IMPORTANT:** To provide additional protection from the risk of shock, the dispenser **MUST** be connected to a ground fault circuit interrupter (GFCI) outlet at all times. Use of an extension cord will void any warranties. See warranty document for complete terms and conditions.

## Cautions

- Do not connect the dispenser to the power outlet yet. Install the dispenser on a flat and secure place approximately 4 inches (10cm) from the wall.
- If you need to move the dispenser, wait approximately 1 hour after turning off the power. Upon moving, do not tilt the dispenser more than 45 degrees.
- Make sure that the electric socket is correctly grounded to prevent electric shock.
- Check If the Water Levers are firmly closed.
- This dispenser is intended for indoor use only.
- Do not expose to direct sunlight.

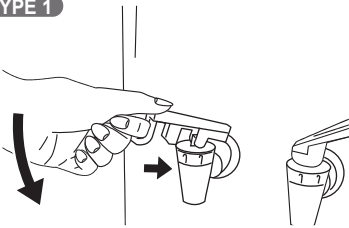
## ■ Cold Water Faucet (Blue Lever) and Hot Water Faucet (Red Lever)

Press the Blue Lever for Cold Water and Red Lever for Hot Water, respectively. Place a cup directly below a faucet and depress the correct lever, but be careful using the hot water. Even when a bottle is empty, Cold Water is available, for a small volume, but hot water is not available when the bottle is empty.



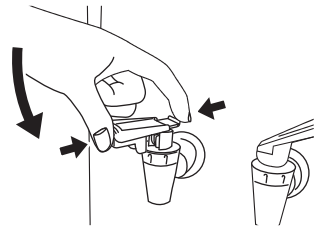
## How to use Child Lock Lever

TYPE 1



Hot water comes out if pressing the whole lever with the bottom of lever pressed with the index finger.

TYPE 2



Hot water comes out if pressing the whole lever with the lever pressed with the thumb and index finger.



### Cautions

When the hot water comes out, be careful not to burn yourself. Do not allow the children to use the dispenser unsupervised.

## RECEIVING

Inspect the dispenser box carefully for any evidence of shipping or handling damage before signing to receive goods. In case of shipping damage, claims should be filed immediately with the carrier

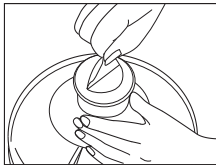
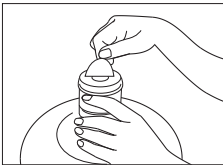
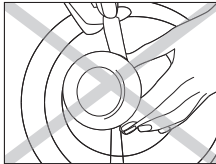
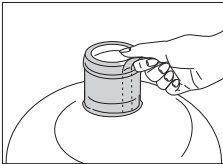
## HOW TO INSTALL AND USE

1. Keep cooler unplugged until water flows all the way through faucets
2. Ensure dispenser stands upright for a minimum of 2 hours before loading water bottle.
3. Place dispenser a minimum of 4 inches away from the wall to ensure ventilation.
4. Install dispenser on a level floor strong enough to support it when fully loaded.
5. Do not install dispenser where it will be subject to direct sunlight, heat or moisture.
6. Wipe down the water bottle cap and neck to ensure there is no debris.

## PREPARE WATER BOTTLE

Remove the Cap Seal on the top of the bottle cap (if necessary).

\* Make sure not to remove the plastic cap of bottle.



## INSTALL BOTTLE IN NO-SPILL SYSTEM

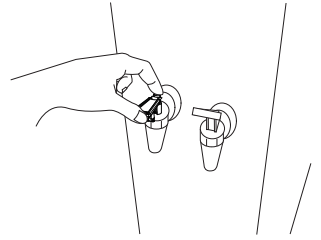
Invert the bottle and place it into the top of the No-Spill System. As the water fills the reservoirs inside the machine, the water leaving the bottle will be replaced with air seen as bubbles rising in the bottle. This is normal and will stop when the reservoir is filled. This process will repeat itself each time water is drawn from the dispenser.



## Remove the Air inside the Hot Water Tank

After installing a bottle, remove the air inside the Hot Water Tank by pressing and holding the Hot Water Lever as shown in the following figure until water starts to come out of the water outlet.

Place a cup under the hot dispenser faucet. Squeeze the front and back of the left faucet handle together and push down until water flows continuously. Depress the cold water faucet to make sure there is a continuous flow of water

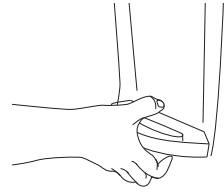


## Case / Drip Tray

Case: Clean the dispenser using a soft damp cloth. At all times, do not use abrasive cleaning materials or implements.

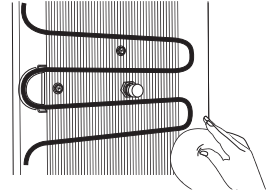
Once the soiled parts of the dispenser have been cleansed, dry using a soft cloth.

Drip Tray: Clean the Drip Tray and then wipe off with a neutral detergent and a soft cloth.



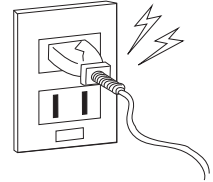
## Radiator Condenser

A radiator is mounted on the back of Dispenser. If it is too close to a wall, or when the radiator gets covered in dust, the cooling efficiency will be impaired. Please clean the dust off with a soft brush or vacuum cleaner. This should be done regularly.



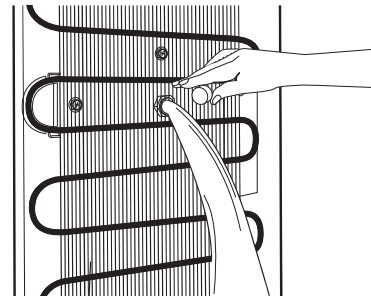
## Check the Power Cord / Plug

Check to see that the power cord is not damaged or overheating, and also that no heavy objects are placed on it. Failure of the power cord could lead to fire or shock hazards. Please frequently check.



## Check the Leakage

If the bottle is not firmly fixed to the No-Spill System, or when the Drain Cork is not closed completely, leakage may occur. Check if there are any leakages on the back or bottom by moving the dispenser.



## Leakage of Tank

If there are any leakages, drain the Cold Water through Water outlet.

Drain the hot water by removing the cap of Hot Water Drain Valve.



### Cautions

Before draining hot water, wait one hour after turning power off to allow water to cool down. Otherwise, you may be burnt by hot water.

# TROUBLESHOOTING

Please check the following items prior to asking for repair

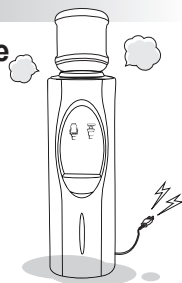
Troubles	Things to check	Troubleshooting
<b>Water does not come out (Cold Water &amp; Hot Water)</b>	Is the bottle empty?	Replace with a new bottle.
	Is the air inside the Tank removed completely?	Press and hold the lever until the water comes out through Hot Water Faucet.
<b>Cold water does not come out</b>	Is the power cord unplugged?	Check the power cord.
	Is the power appropriately supplied? Has the circuit breaker tripped?	Check the Distribution board.
	Is the capacity for producing cold water exceeded by your demand? Is the remaining cooling time too short?	Reduce consumption to within capacity specified for the dispenser.
	Is the temperature too high?	Install in a place where the air is well circulated. Do not expose to direct sun light.
	Are there dust on the radiator condenser?	Clean the radiator condenser mounted on the back.
	Is the back of the dispenser too close to a wall?	Install with 15cm separated from a wall. Reinstall to allow the radiator condenser to be cooled down.
<b>Hot water does not come out</b>	Is the power cord unplugged?	Check the power cord.
	Is the power off? Is Circuit Breaker closed?	Check the plug board.
	Is the capacity for producing hot water exceeded by your demand?	Reduce consumption to within capacity specified for the dispenser.
	Is hot water switch turned off?	Turn on Hot Water Switch mounted on the back.
<b>Dispenser is leaking</b>	Is either the Hot or Cold faucet leaking?	If the faucets are loose, firmly fasten them.
	Is the Hot Water Drain leaking?	Firmly fasten the cap of Hot Water Drain.
	Is the water condensing on the surface of Tank?	Install the dispenser in a cool place.
<b>Bottle is leaking</b>	Is the Tank leaking?	Take off the bottle and then drain the water (contact the shop you purchased the dispenser from).
	Is the bottle correctly inserted in the No-Spill System?	Put in the bottle correctly.
	Is the bottle broken or cracked?	Replace with a new bottle.
<b>Noise</b>	Is the dispenser making a vibrating noise?	Make sure that it is installed on a level solid horizontal surface.
	Is the dispenser in contact with a wall or other products?	Keep the designated space away from a wall or other products.

## Repair & After Sales Service

Unplug the power cord and then contact our representative from whom you purchased the dispenser.

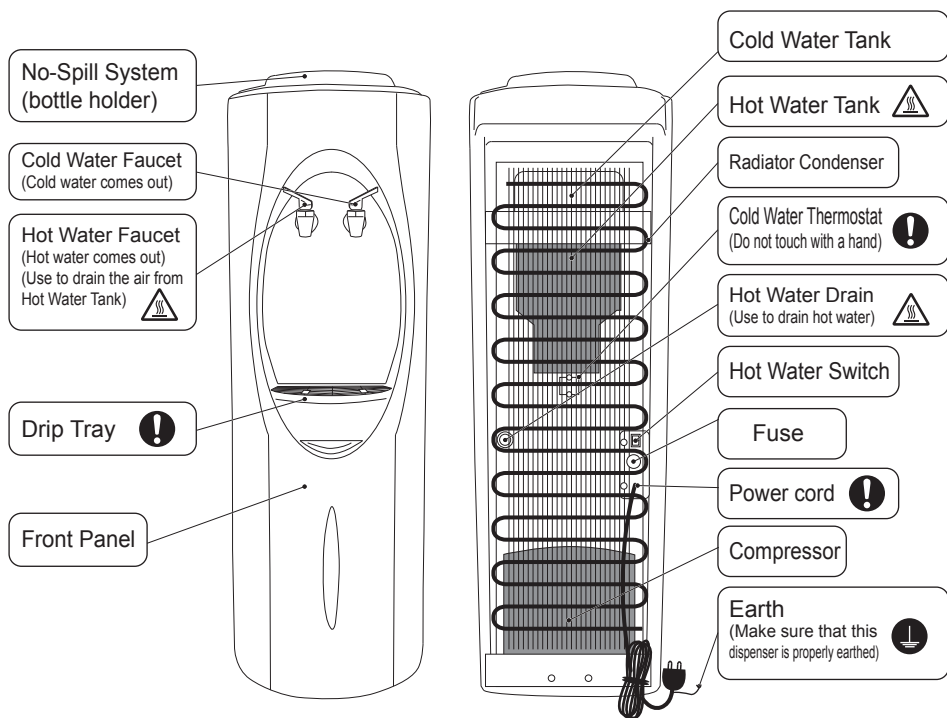
● Please inform us of following information ●

- (1) Name (Company Name) and Address
- (2) How to contact the staff in charge of the dispenser
- (3) Details of problems encountered.



# COOLER, PARTS AND ACCESSORIES

## Names of Each Component



## Specifications

Name		Hot and Cold Water Dispenser				Cook and Cold Water Dispenser			
Model Number		CBP500 & CBP520				CBP505 & CBP525			
Size(mm)		320(W) x 320(D) x 970(H)				320(W) x 320(D) x 970(H)			
Weight		15kg				14.3kg			
Power		220-240V 50Hz	220V 60Hz	100V 50/60Hz	115V 60Hz	220-240V 50Hz	220V 60Hz	100V 50/60Hz	115V 60Hz
Consumption Power		400W/Heating, 100W/cooling				100W/cooling			
Cool Water	Continuous Discharging Capacity	1.4ℓ				1.4ℓ			
	Temperature	5°C ~ 12°C				5°C ~ 12°C			
	Tank Capacity	About 3.4ℓ (Stainless Steel Tank)				About 3.4ℓ (Stainless Steel Tank)			
Hot Water	Continuous Discharging Capacity	1.4ℓ				-			
	Temperature	80°C ~ 90°C				Room Temperature			
	Tank Capacity	About 1.92ℓ (Stainless Steel Tank)				-			

\* For the improvement of product Brio reserves the right to change specifications without notice.

\* You must confirm the correct voltage(V) and frequency(Hz) and then plug to the outlet. Check the proper voltage in the back of dispenser.

Manufactured by: DOWNTOWN WHOLESALERS