



INSTALLATION INSTRUCTIONS

REFRIGERATOR WATER FILTER

A REPLACEMENT FOR THE FOLLOWING WATER FILTERS:

Samsung®

DA97-17376B, DA97-08006C, HAF-QIN, HAF-QIN/EXP



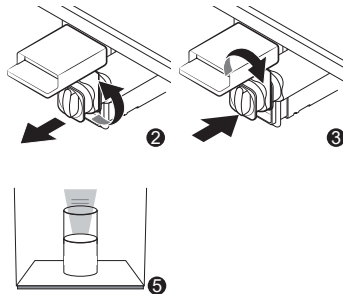
Tested and Certified by NSF International against NSF/ANSI Standard 42 in model **RF6045A** for the reduction of the claims specified on the Performance Data Sheet, and to NSF/ANSI 372 ($\leq 0.25\%$ lead).

INSTALLATION PROCEDURES:

Before Installation:

- Shut off the cold-water supply to the refrigerator before installation. Turn on the refrigerator water dispenser to release water pressure, letting water drain from the pipe completely.
- It is normal for black carbon fines (particles) to appear on the outside of your filter. This happens when the filter is jarred in shipping. It is safe, simply wipe it off.
- The filter connectors are larger to prevent leaks. You might have to twist the filter hard to make sure the connection is secure.

1. Shut off the water supply to refrigerator.
2. Open the filter cover and turn the knob of the filter cartridge counter-clockwise by 90 degrees to unlock the old filter. Then pull it out.
3. Insert the new filter cartridge and turn it clockwise to lock into place.
4. Press and hold Filter Reset on the main panel for 3 seconds to reset the filter life.
5. Open the water valve and run water through the dispenser for about 5 minutes (about 3 gallons) to remove any trapped air and clear the system.



CAUTION:

This filter should not be used with water that is microbiologically unsafe or of unknown quality without adequate disinfection before or after the system.

RESETTING YOUR CHANGE FILTER INDICATOR:

NOTE: These are the most common filter reset instructions. If the instructions don't work for your refrigerator brand, see the documentation that came with your refrigerator.

REFRIGERATOR BRAND	INSTRUCTIONS
Samsung®	Press and hold the ICE TYPE and CHILD LOCK buttons for three seconds. The water filter indicator should turn green. NOTE: Only hold these buttons for three seconds. Holding these buttons for five seconds cancels the reset. If you cancel the reset, repeat the procedure.

STORAGE AND MAINTENANCE:

- Replace your filter every 6 months or 316 gallons to prevent bacteria and fungus growth in your filter, supply lines, and storage tank.
- Keep your unused filters in a cool, dark, and dry place until you need them.
- If you do not use your water dispenser for more than four days, run two gallons of water before using it to prevent bad tasting water.

FREQUENTLY ASKED QUESTIONS:

Q: Why is it difficult to twist the new filter into the filter housing?

A: The connector may expand because of water pressure. Therefore, it is recommended you push the new filter in with a little bit of force, but not too hard. Then turn it clockwise.

Q: Do I need to flush the filter after installation?

A: After installation, it is highly recommended you run water for a few minutes before using. Water filters are made from advanced coconut carbon block, so there are some carbon fines in the filter. Flushing removes the carbon fines to produce clean water.

Q: Must the filter be changed every 6 months?

A: Yes, you must replace the filter every six months or sooner if water flow is reduced or if there is heavy sediment / rust present. Over-used filters will degrade the filtration performance.

WARNING:

To reduce the risk of property damage due to water leakage, this filter **MUST** be installed in accordance with the manufacturer's specifications and instructions. This filter unit must be replaced every 316 gallons or 6 months. Failure to follow instructions and operating specifications will void your warranty. Further, manufacturer assumes no responsibility or liability for damages arising out of misuse of the product.

Samsung® is a registered trademark of Samsung Electronics Co., Ltd..

CUSTOMER SERVICE

briocoolers.com

☎ 1-844-257-4103

✉ cs@briocoolers.com

Manufactured by

Brio Water Technology, Inc.

Vernon, CA 90058 ©2020

MADE IN CHINA

PERFORMANCE DATA SHEET

System Model No.: RF6045A

OPERATING SPECIFICATIONS:

Operating Temperature: 33°F-100°F/0.6°C-38°C

Working Pressure: 20 psi-100 psi/140 kPa-689 kPa


Rated Capacity: 316 gallons/1,196 litres

Flow Rate: 0.5 gpm/1.9 lpm

SUBSTANCE REDUCTION:

The system has been tested and certified by the NSF International according to NSF/ANSI Standard 42 for the reduction of the substances listed below. The concentration of the indicated substances in water entering the system was reduced to a concentration less than or equal to the permissible limit for the water leaving the system, as specified by NSF/ANSI Standard 42. While testing was performed under standard laboratory conditions, actual performance may vary.

Substance	Inf. Average	NSF Specified Challenge Concentration	Ave. % Reduction (%)	Average Product Water Concentration	Max Permissible Product Water Concentration	NSF Reduction Requirements	NSF Test Report
Chlorine Taste and Odor	2.1 mg/L	2.0mg/L ± 10%	97.6%	0.05 mg/L	N/A	≥50%	J-00356469

 Do not use with water that is microbiologically unsafe or of unknown water quality without adequate disinfection before or after the system.

Designed by Hongkong Ecoaqua Co., Limited

Made in P.R.C.