



INSTALLATION INSTRUCTIONS

REFRIGERATOR WATER FILTER

A REPLACEMENT FOR THE FOLLOWING WATER FILTERS:

Bosch®

640565, AP3961137, 1257074

Indesit®

640565, AP3961137, 1257074



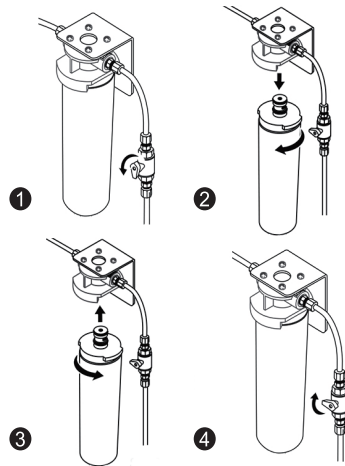
Tested and Certified by NSF International in Model **RF6026A** against NSF/ANSI Standards 42, 53 and 401 for the reduction of the claims specified on the Performance Data Sheet, and to NSF/ANSI 372 ($\leq 0.25\%$ lead).

INSTALLATION INSTRUCTIONS:

Before Installation:

- Shut off the cold-water supply to the refrigerator before installation. Turn on the refrigerator water dispenser to release water pressure, letting water drain from the pipe completely.
- It is normal for black carbon fines (particles) to appear on the outside of your filter. This happens when the filter is jarred in shipping. It is safe, simply wipe it off.
- The filter connectors are larger to prevent leaks. You might have to twist the filter hard to make sure the connection is secure.

1. Close shut off valves before (inlet) and after (outlet) filter head. Depressurize filter.
2. Grasp head and cartridge securely, and turn used cartridges slowly to the left. If water line has not been properly depressurized, a small discharge of water may occur. Gently pull cartridge straight out and discard.
3. Align tabs of new cartridge with head and insert new cartridge into head. Turn cartridge to the right until the filter stops.
4. Place the inlet shutoff valves in regular working position. Due to air and carbon fines water may initially run cloudy but will clear.



⚠ CAUTION:

This filter should not be used with water that is microbiologically unsafe or of unknown quality without adequate disinfection before or after the system.

STORAGE AND MAINTENANCE:

- Replace your filter every 6 months or 300 gallons to prevent bacteria and fungus growth in your filter, supply lines, and storage tank.
- Keep your unused filters in a cool, dark, and dry place until you need them.
- If you do not use your water dispenser for more than four days, run two gallons of water before using it to prevent bad tasting water.

FREQUENTLY ASKED QUESTIONS:

Q: Why is it difficult to twist the new filter into the filter housing?

A: The connector may expand because of water pressure. Therefore, it is recommended you push the new filter in with a little bit of force, but not too hard. Then turn it clockwise.

Q: Do I need to flush the filter after installation?

A: After installation, it is highly recommended you run water for a few minutes before using. Water filters are made from advanced coconut carbon block, so there are some carbon fines in the filter. Flushing removes the carbon fines to produce clean water.

Q: Must the filter be changed every 6 months?

A: Yes, you must replace the filter every six months or sooner if water flow is reduced or if there is heavy sediment / rust present. Over-used filters will degrade the filtration performance.

⚠ WARNING:

To reduce the risk of property damage due to water leakage, this filter **MUST** be installed in accordance with the manufacturer's specifications and instructions. This filter unit must be replaced every 300 gallons or 6 months. Failure to follow instructions and operating specifications will void your warranty. Further, manufacturer assumes no responsibility or liability for damages arising out of misuse of the product.

BOSCH® is a registered trademark of BSH Home Appliances Corp.

CUSTOMER SERVICE

briocoolers.com

☎ 1-844-257-4103

✉ cs@briocoolers.com

Manufactured by

Brio Water Technology, Inc.

Vernon, CA 90058 ©2020

MADE IN CHINA

PERFORMANCE DATA SHEET

System Model No.: **RF6026A**

OPERATING SPECIFICATIONS:

Operating Temperature: 33°F-100°F/0.6°C-38°C

Working Pressure: 20 psi-100 psi/140 kPa-689 kPa

Rated Capacity: 300 gallons/1,137 litres

Flow Rate: 0.5 gpm/1.9 lpm

SUBSTANCE REDUCTION:

The system has been tested and certified by the NSF International according to NSF/ANSI Standards 42, 53 and 401 for the reduction of the substances listed below. The concentration of the indicated substances in water entering the system was reduced to a concentration less than or equal to the permissible limit for the water leaving the system, as specified by NSF/ANSI Standards 42, 53 and 401. While testing was performed under standard laboratory conditions, actual performance may vary.

Substance	Inf. Average	NSF Specified Challenge Concentration	Ave. % Reduction (%)	Average Product Water Concentration	Max Permissible Product Water Concentration	NSF Reduction Requirements	NSF Test Report
Chlorine Taste and Odor	2.1 mg/L	2.0mg/L ± 10%	97.0%	0.063 mg/L	N/A	≥50%	N/A
Benzene	15 ug/L	15 ug/L ± 10%	96.6%	0.5 ug/L	0.5 ug/L	N/A	J-00268283
Carbofuran	73 ug/L	73 ug/L ± 10%	98.4%	2 ug/L	40 ug/L	N/A	J-00268284
Lead (pH 8.5)	140 ug/L	140 ug/L ± 10%	99.6%	0.5 ug/L	10 ug/L	N/A	J-00268279
Lead (pH 6.5)	140 ug/L	140 ug/L ± 10%	99.6%	0.5 ug/L	10 ug/L	N/A	J-00268280
Cyst	120,000 oocysts/L	minimum 50000 oocysts/L	> 99.99%	1 oocysts/L	N/A	≥99.95%	J-00263594
Phenytoin	0.21 ug/L	0.2 ug/L ± 20%	95.2%	10 ng/L	30 ng/L	N/A	J-00268287
Ibuprofen	0.42 ug/L	0.42 ug/L ± 20%	94.4%	22 ng/L	60 ng/L	N/A	J-00268287
Naproxen	0.13 ug/L	0.14 ug/L ± 20%	96.2%	5 ng/L	20 ng/L	N/A	J-00268287
Estrone	0.15 ug/L	0.14 ug/L ± 20%	96.6%	5 ng/L	20 ng/L	N/A	J-00268287
Bisphenol A	2.5 ug/L	2 ug/L ± 20%	99.2%	20 ng/L	300 ng/L	N/A	J-00268287
Nonyl phenol	1.8 ug/L	1.4 ug/L ± 20%	97.2%	50 ng/L	200 ng/L	N/A	J-00268287
Endrin	6 ug/L	6 ug/L ± 10%	93.6%	0.3 ug/L	2 ug/L	N/A	J-00296278

Designed by Hongkong Ecoaqua Co., Limited
Made in P.R.C.