



INSTALLATION INSTRUCTIONS

REFRIGERATOR WATER FILTER

A REPLACEMENT FOR THE FOLLOWING WATER FILTERS:

LG®

LT800P, ADQ73613401

Kenmore®

9490, 46-9490, 469490, ADQ73613402



System Tested and Certified by NSF International in Model **RF6020A** against NSF/ANSI Standard 42, 53, 401 and CSA B483.1 for the reduction of the claims specified on the Performance Data Sheet, and to NSF/ANSI 372 ($\leq 0.25\%$ lead).



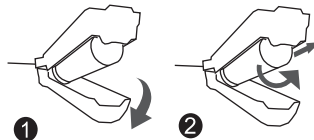
Certified by WQA against NSF/ANSI Standards 42, 53 and 401 in model RF6020A for the reduction of the claims specified on the Performance Data Sheet.

INSTALLATION INSTRUCTIONS:

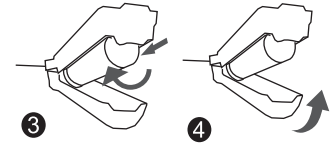
Before Installation:

- Shut off the cold-water supply to the refrigerator before installation. Turn on the refrigerator water dispenser to release water pressure, letting water drain from the pipe completely.
- It is normal for black carbon fines (particles) to appear on the outside of your filter. This happens when the filter is jarred in shipping. It is safe, simply wipe it off.
- The filter connectors are larger to prevent leaks. You might have to twist the filter hard to make sure the connection is secure.

1. Locate the filter cartridge holder in the back upper right hand corner of the refrigerator. To open the cartridge cover, push in where indicated and the cover will drop down.
2. Remove old filter by slowly rotating it to the left. A small amount of water may drip down.



3. Position the cartridge inside the cartridge holder and slowly rotate the cartridge to the right until it stops. When the cartridge is properly installed, you will feel it "click" as it locks into place. Do not over tighten.



4. Close the cartridge cover.
5. Run water from the dispenser for 5 minutes at 0.5 gpm (about 2.5 gallons) to clear the system and prevent spluttering.

⚠ CAUTION:

This filter should not be used with water that is microbiologically unsafe or of unknown quality without adequate disinfection before or after the system.

RESETTING YOUR CHANGE FILTER INDICATOR:

NOTE: These are the most common filter reset instructions. If the instructions don't work for your refrigerator brand, see the documentation that came with your refrigerator.

REFRIGERATOR BRAND	INSTRUCTIONS
LG®	Press and hold the reset button for 3 seconds.
Kenmore®	The filter reset for Kenmore refrigerators varies by model. See the documentation that came with your refrigerator.

STORAGE AND MAINTENANCE:

- Replace your filter every 6 months or 300 gallons to prevent bacteria and fungus growth in your filter, supply lines, and storage tank.
- Keep your unused filters in a cool, dark, and dry place until you need them.
- If you do not use your water dispenser for more than four days, run two gallons of water before using it to prevent bad tasting water.

FREQUENTLY ASKED QUESTIONS:

Q: Why is it difficult to twist the new filter into the filter housing?

A: The connector may expand because of water pressure. Therefore, it is recommended you push the new filter in with a little bit of force, but not too hard. Then turn it clockwise.

Q: Do I need to flush the filter after installation?

A: After installation, it is highly recommended you run water for a few minutes before using. Water filters are made from advanced coconut carbon block, so there are some carbon fines in the filter. Flushing removes the carbon fines to produce clean water.

Q: Must the filter be changed every 6 months?

A: Yes, you must replace the filter every six months or sooner if water flow is reduced or if there is heavy sediment / rust present. Over-used filters will degrade the filtration performance.

⚠ WARNING:

To reduce the risk of property damage due to water leakage, this filter MUST be installed in accordance with the manufacturer’s specifications and instructions. This filter unit must be replaced every 300 gallons or 6 months. Failure to follow instructions and operating specifications will void your warranty. Further, manufacturer assumes no responsibility or liability for damages arising out of misuse of the product.

LG® is a registered trademark of LG CORP.

Kenmore® is a registered trademark of KCD IP, LLC..

CUSTOMER SERVICE

briocoolers.com

☎ 1-844-257-4103

✉ cs@briocoolers.com

Manufactured by
Brio Water Technology, Inc.

Vernon, CA 90058 ©2020

MADE IN CHINA

PERFORMANCE DATA SHEET

System Model No.: RF6020A

OPERATING SPECIFICATIONS:

Operating Temperature: 33°F-100°F/0.6°C-38°C

Working Pressure: 20 psi-100 psi/140 kPa-689 kPa

Rated Capacity: 300 gallons/1,137 litres

Flow Rate: 0.5 gpm/1.9 lpm

SUBSTANCE REDUCTION:

The system has been tested and certified by the NSF International according to NSF/ANSI Standards 42, 53 and 401 for the reduction of the substances listed below. The concentration of the indicated substances in water entering the system was reduced to a concentration less than or equal to the permissible limit for the water leaving the system, as specified by NSF/ANSI Standards 42, 53 and 401. While testing was performed under standard laboratory conditions, actual performance may vary.

Substance	Inf. Average	NSF Specified Challenge Concentration	Ave. % Reduction (%)	Average Product Water Concentration	Max Permissible Product Water Concentration	NSF Reduction Requirements	NSF Test Report
Chlorine Taste and Odor	2.1 mg/L	2.0mg/L ± 10%	97.0%	0.063 mg/L	N/A	≥50%	N/A
Benzene	15 ug/L	15 ug/L ± 10%	96.6%	0.5 ug/L	0.5 ug/L	N/A	J-00268283
Carbofuran	73 ug/L	73 ug/L ± 10%	98.4%	2 ug/L	40 ug/L	N/A	J-00268284
Lead (pH 8.5)	140 ug/L	140 ug/L ± 10%	99.6%	0.5 ug/L	10 ug/L	N/A	J-00268279
Lead (pH 6.5)	140 ug/L	140 ug/L ± 10%	99.6%	0.5 ug/L	10 ug/L	N/A	J-00268280
Cyst	120,000 oocysts/L	minimum 50000 oocysts/L	>99.99%	1 oocysts/L	N/A	≥99.95%	J-00263594
Phenytoin	0.21 ug/L	0.2 ug/L ± 20%	95.2%	10 ng/L	30 ng/L	N/A	J-00268287
Ibuprofen	0.42 ug/L	0.42 ug/L ± 20%	94.4%	22 ng/L	60 ng/L	N/A	J-00268287
Naproxen	0.13 ug/L	0.14 ug/L ± 20%	96.2%	5 ng/L	20 ng/L	N/A	J-00268287
Estrone	0.15 ug/L	0.14 ug/L ± 20%	96.6%	5 ng/L	20 ng/L	N/A	J-00268287
Bisphenol A	2.5 ug/L	2 ug/L ± 20%	99.2%	20 ng/L	300 ng/L	N/A	J-00268287
Nonyl phenol	1.8 ug/L	1.4 ug/L ± 20%	97.2%	50 ng/L	200 ng/L	N/A	J-00268287
Endrin	6 ug/L	6 ug/L ± 10%	93.6%	0.3 ug/L	2 ug/L	N/A	J-00296278

⚠ Do not use with water that is microbiologically unsafe or of unknown water quality without adequate disinfection before or after the system. Systems certified for cyst reduction may be used with disinfected water that may contain filterable cysts.

Designed by Hongkong Ecoaqua Co., Limited

Made in P.R.C.