

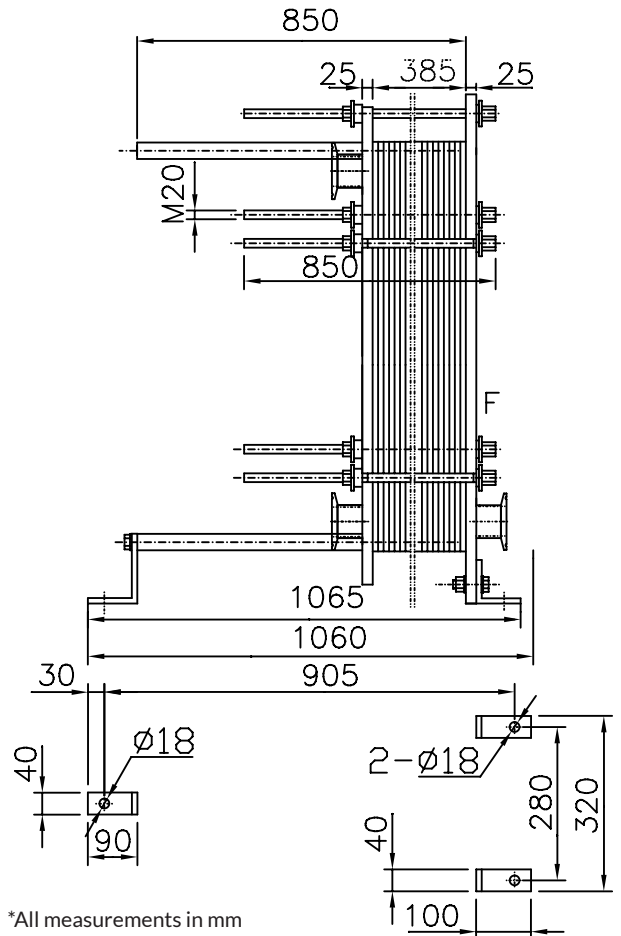
FEATURES

- Fixed Frame Plate
- Upper Carrying Bar
- Lower Guiding Bar
- Support Column
- Movable Pressure Plate
- Clip-On EPDM Gaskets
- Tightening Bolts and Nuts
- Adjustable Feet

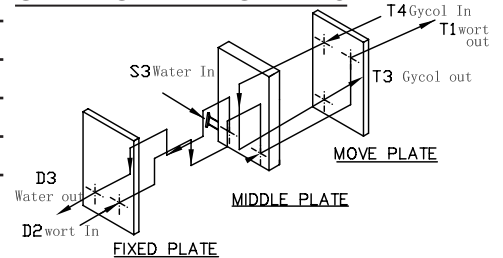
	Stage 1	Stage 2
No. of plates	97	13
No. of effective plates	95	11
No. of passes	4	1
Plate pack dimensions (Measure A)	385mm	

	Stage 1		Stage 2	
	Wort	Water	Wort	30% Glycol
Mass flow rate	5678kg/h	6836kg/h	5678kg/h	4097kg/h
Inlet temperature	100°C (212°F)	12.7°C (55°F)	17.2°C (63°F)	-2.2°C (28°F)
Outlet temperature	17.2°C (63°F)	77.7°C (172°F)	10°C (50°F)	8.3°C (47°F)
Pressure drop (Perm/Calc)	80.0/51.6kPa	80.0/76.3kPa	80.0/60.1kPa	80.0/34.6kPa
Velocity Connection In	0.788m/s	0.968m/s	0.774m/s	0.551m/s
Velocity Connection Out	0.774m/s	0.994m/s	0.772m/s	0.553m/s

Heat exchanged	515.9kW	44.10kW
Heat transfer area	13.29m ²	1.3m ²
O.H.T.C clean conditions	4668W/(m ² *K)	3824W/(m ² *K)
O.H.T.C service	4236W/(m ² *K)	3335W/(m ² *K)
Fouling Resistance* 10000	0.0 m ² *K/W	0.0 m ² *K/W
Additional Excess Surface	10%	10%
Mean Temperature	10.0 K	10.5 K



CONNECTION LOCATIONS



CONNECTION TYPES

