

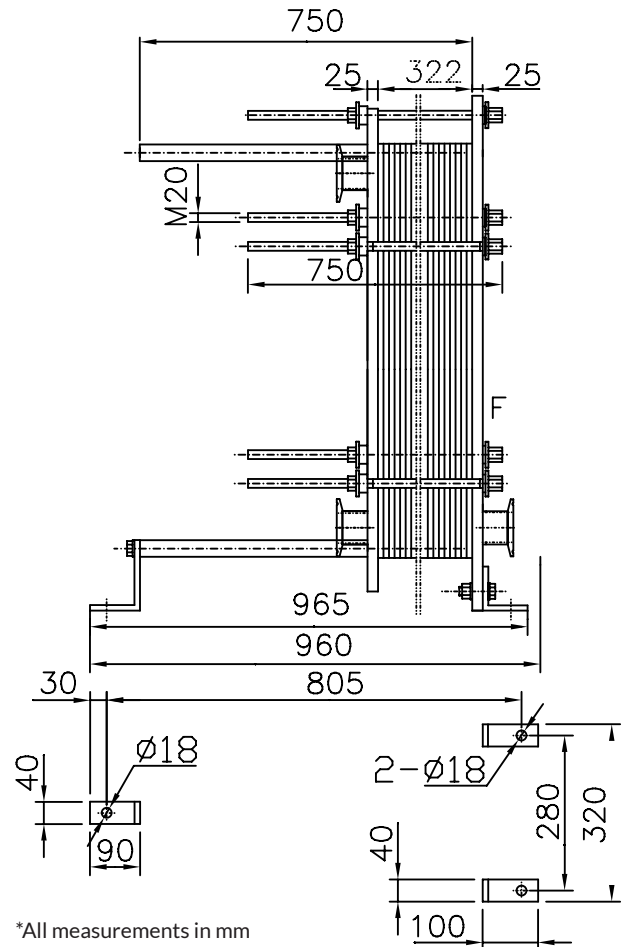
FEATURES

- Fixed Frame Plate
- Upper Carrying Bar
- Lower Guiding Bar
- Support Column
- Movable Pressure Plate
- Clip-On EPDM Gaskets
- Tightening Bolts and Nuts
- Adjustable Feet

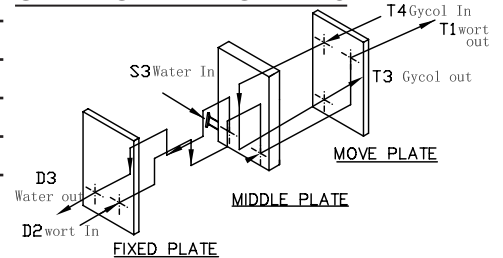
	Stage 1	Stage 2
No. of plates	81	11
No. of effective plates	79	9
No. of passes	4	1
Plate pack dimensions (Measure A)	322mm	

	Stage 1		Stage 2	
	Wort	Water	Wort	30% Glycol
Mass flow rate	4542kg/h	5468kg/h	4542kg/h	3277kg/h
Inlet temperature	100°C (212°F)	12.7°C (55°F)	17.2°C (63°F)	-2.2°C (28°F)
Outlet temperature	17.2°C (63°F)	77.7°C (172°F)	10°C (50°F)	8.3°C (47°F)
Pressure drop (Perm/Calc)	80.0/40.3kPa	80.0/59kPa	80.0/60.0kPa	80.0/34.6kPa
Velocity Connection In	0.630m/s	0.774m/s	0.619m/s	0.441m/s
Velocity Connection Out	0.619m/s	0.795m/s	0.618m/s	0.442m/s

Heat exchanged	412.7kW	35.28kW
Heat transfer area	11.1m ²	1.0m ²
O.H.T.C clean conditions	4326W/(m ² *K)	3824W/(m ² *K)
O.H.T.C service	3775W/(m ² *K)	3431W/(m ² *K)
Fouling Resistance* 10000	0.0 m ² *K/W	0.0 m ² *K/W
Additional Excess Surface	15%	10%
Mean Temperature	9.9 K	10.5 K



CONNECTION LOCATIONS



CONNECTION TYPES

