

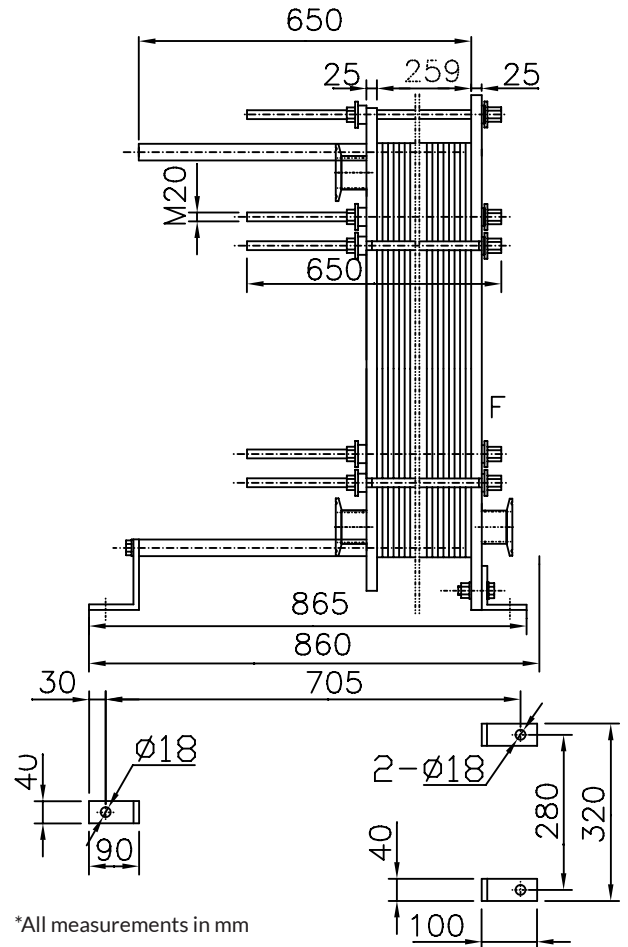
### FEATURES

- Fixed Frame Plate
- Upper Carrying Bar
- Lower Guiding Bar
- Support Column
- Movable Pressure Plate
- Clip-On EPDM Gaskets
- Tightening Bolts and Nuts
- Adjustable Feet

	Stage 1	Stage 2
No. of plates	65	9
No. of effective plates	63	7
No. of passes	4	1
Plate pack dimensions (Measure A)	259mm	

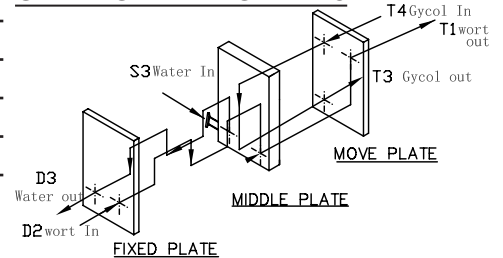
	Stage 1		Stage 2	
	Wort	Water	Wort	30% Glycol
Mass flow rate	3407kg/h	4101kg/h	3407kg/h	2458kg/h
Inlet temperature	100°C (212°F)	12.7°C (55°F)	17.2°C (63°F)	-2.2°C (28°F)
Outlet temperature	17.2°C (63°F)	77.7°C (172°F)	10°C (50°F)	8.3°C (47°F)
Pressure drop (Perm/Calc)	80.0/35.5kPa	80.0/51.6kPa	80.0/34.5kPa	80.0/20.4kPa
Velocity Connection In	0.473m/s	0.581m/s	0.464m/s	0.331m/s
Velocity Connection Out	0.464m/s	0.596m/s	0.463m/s	0.332m/s

Heat exchanged	309.5kW	26.46kW
Heat transfer area	8.8m <sup>2</sup>	1.0m <sup>2</sup>
O.H.T.C clean conditions	4161W/(m <sup>2</sup> *K)	3206W/(m <sup>2</sup> *K)
O.H.T.C service	3638W/(m <sup>2</sup> *K)	2573W/(m <sup>2</sup> *K)
Fouling Resistance* 10000	0.0 m <sup>2</sup> *K/W	0.0 m <sup>2</sup> *K/W
Additional Excess Surface	14%	25%
Mean Temperature	9.6 K	10.5 K



\*All measurements in mm

### CONNECTION LOCATIONS



### CONNECTION TYPES

