

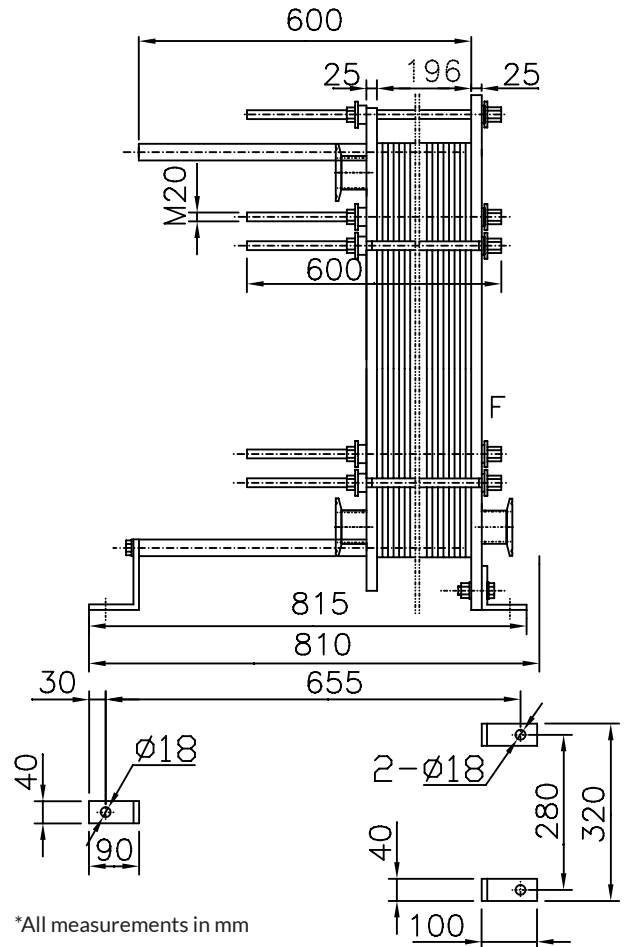
FEATURES

- Fixed Frame Plate
- Upper Carrying Bar
- Lower Guiding Bar
- Support Column
- Movable Pressure Plate
- Clip-On EPDM Gaskets
- Tightening Bolts and Nuts
- Adjustable Feet

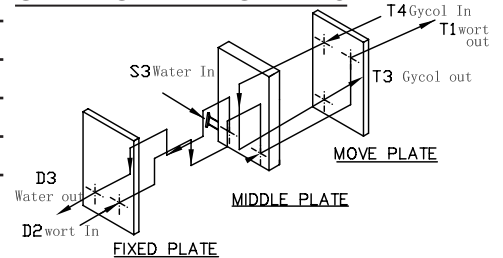
	Stage 1	Stage 2
No. of plates	49	7
No. of effective plates	47	5
No. of passes	4	1
Plate pack dimensions (Measure A)	196mm	

	Stage 1		Stage 2	
	Wort	Water	Wort	30% Glycol
Mass flow rate	2271kg/h	2734kg/h	2271kg/h	1639kg/h
Inlet temperature	100°C (212°F)	12.7°C (55°F)	17.2°C (63°F)	-2.2°C (28°F)
Outlet temperature	17.2°C (63°F)	77.7°C (172°F)	10°C (50°F)	8.3°C (47°F)
Pressure drop (Perm/Calc)	80.0/28.3kPa	80.0/40.7kPa	80.0/27.8kPa	80.0/16.4kPa
Velocity Connection In	0.315m/s	0.387m/s	0.310m/s	0.220m/s
Velocity Connection Out	0.310m/s	0.398m/s	0.309m/s	0.221m/s

Heat exchanged	206.4kW	17.64kW
Heat transfer area	6.6m ²	0.7m ²
O.H.T.C clean conditions	3875W/(m ² *K)	2979W/(m ² *K)
O.H.T.C service	3385W/(m ² *K)	2401W/(m ² *K)
Fouling Resistance* 10000	0.0 m ² *K/W	0.0 m ² *K/W
Additional Excess Surface	14%	24%
Mean Temperature	9.3 K	10.5 K



CONNECTION LOCATIONS



CONNECTION TYPES

