

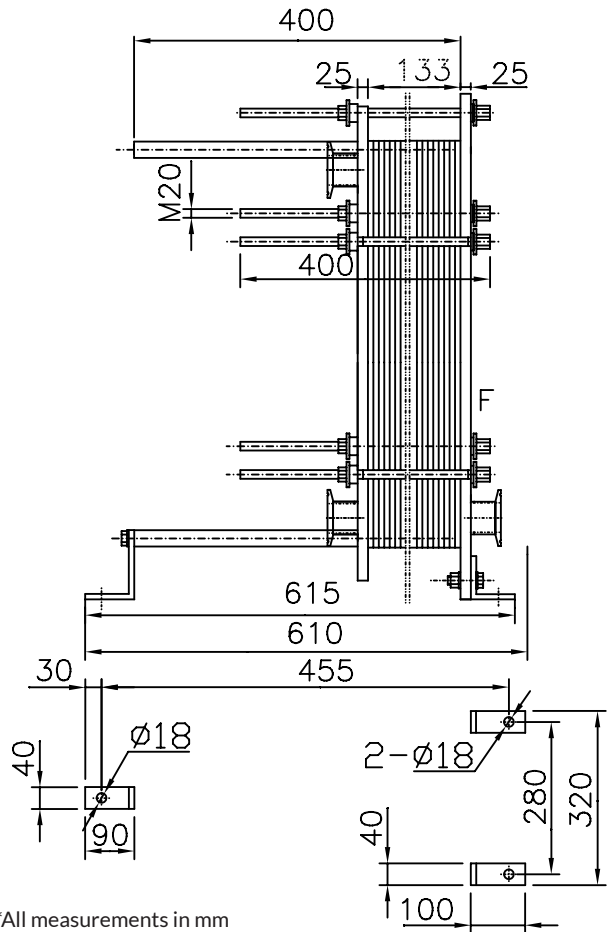
## FEATURES

- Fixed Frame Plate
- Upper Carrying Bar
- Lower Guiding Bar
- Support Column
- Movable Pressure Plate
- Clip-On EPDM Gaskets
- Tightening Bolts and Nuts
- Adjustable Feet

	Stage 1	Stage 2
No. of plates	33	5
No. of effective plates	31	3
No. of passes	4	1
Plate pack dimensions (Measure A)	133mm	

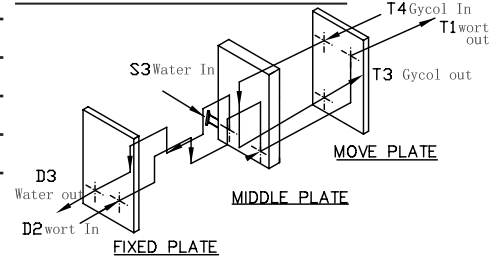
	Stage 1		Stage 2	
	Wort	Water	Wort	30% Glycol
Mass flow rate	1136kg/h	1367kg/h	1136kg/h	774.9kg/h
Inlet temperature	100°C (212°F)	12.7°C (55°F)	17.2°C (63°F)	-2.2°C (28°F)
Outlet temperature	17.2°C (63°F)	77.7°C (172°F)	10°C (50°F)	8.9°C (47°F)
Pressure drop (Perm/Calc)	80.0/16.5kPa	80.0/22.9kPa	80.0/16.5kPa	80.0/8.71kPa
Velocity Connection In	0.158m/s	0.194m/s	0.155m/s	0.104m/s
Velocity Connection Out	0.155m/s	0.199m/s	0.154m/s	0.105m/s

Heat exchanged	103.2kW	8.820kW
Heat transfer area	4.3m <sup>2</sup>	0.4m <sup>2</sup>
O.H.T.C clean conditions	3246W/(m <sup>2</sup> *K)	2437W/(m <sup>2</sup> *K)
O.H.T.C service	2761W/(m <sup>2</sup> *K)	2066W/(m <sup>2</sup> *K)
Fouling Resistance* 10000	0.0 m <sup>2</sup> *K/W	0.0 m <sup>2</sup> *K/W
Additional Excess Surface	18%	18%
Mean Temperature	8.6 K	10.2 K



\*All measurements in mm

## CONNECTION LOCATIONS



## CONNECTION TYPES

