

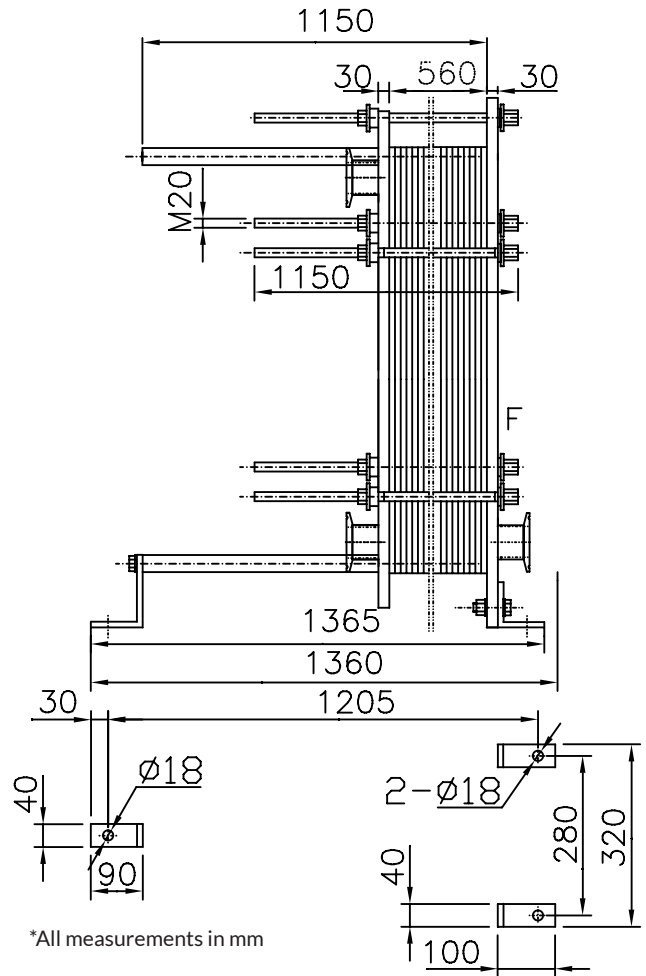
### FEATURES

- Fixed Frame Plate
- Upper Carrying Bar
- Lower Guiding Bar
- Support Column
- Movable Pressure Plate
- Clip-On EPDM Gaskets
- Tightening Bolts and Nuts
- Adjustable Feet

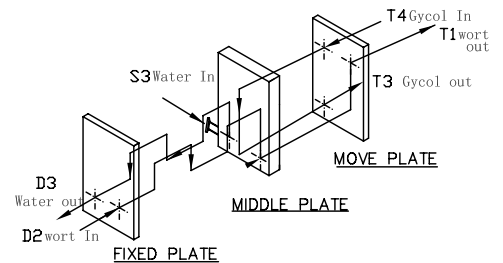
|                                   | Stage 1 | Stage 2 |
|-----------------------------------|---------|---------|
| No. of plates                     | 145     | 15      |
| No. of effective plates           | 143     | 13      |
| No. of passes                     | 4       | 1       |
| Plate pack dimensions (Measure A) | 560mm   |         |

|                           | Stage 1       |                | Stage 2       |               |
|---------------------------|---------------|----------------|---------------|---------------|
|                           | Wort          | Water          | Wort          | 30% Glycol    |
| Mass flow rate            | 9084kg/h      | 10940kg/h      | 9084kg/h      | 6555kg/h      |
| Inlet temperature         | 100°C (212°F) | 12.7°C (55°F)  | 17.2°C (63°F) | -2.2°C (28°F) |
| Outlet temperature        | 17.2°C (63°F) | 77.7°C (172°F) | 10°C (50°F)   | 8.3°C (47°F)  |
| Pressure drop (Perm/Calc) | 80.0/50.6kPa  | 80.0/74.8kPa   | 80.0/78.7kPa  | 80.0/44.4kPa  |
| Velocity Connection In    | 1.26m/s       | 1.55m/s        | 1.24m/s       | 0.882m/s      |
| Velocity Connection Out   | 1.24m/s       | 1.59m/s        | 1.24m/s       | 0.884m/s      |

|                           |                           |                           |
|---------------------------|---------------------------|---------------------------|
| Heat exchanged            | 825.5kW                   | 70.56kW                   |
| Heat transfer area        | 20m <sup>2</sup>          | 1.8m <sup>2</sup>         |
| O.H.T.C clean conditions  | 4606W/(m <sup>2</sup> *K) | 4144W/(m <sup>2</sup> *K) |
| O.H.T.C service           | 3997W/(m <sup>2</sup> *K) | 3997W/(m <sup>2</sup> *K) |
| Fouling Resistance* 10000 | 0.0 m <sup>2</sup> *K/W   | 0.0 m <sup>2</sup> *K/W   |
| Additional Excess Surface | 15%                       | 12%                       |
| Mean Temperature          | 10.3 K                    | 10.5 K                    |



### CONNECTION LOCATIONS



### CONNECTION TYPES

