

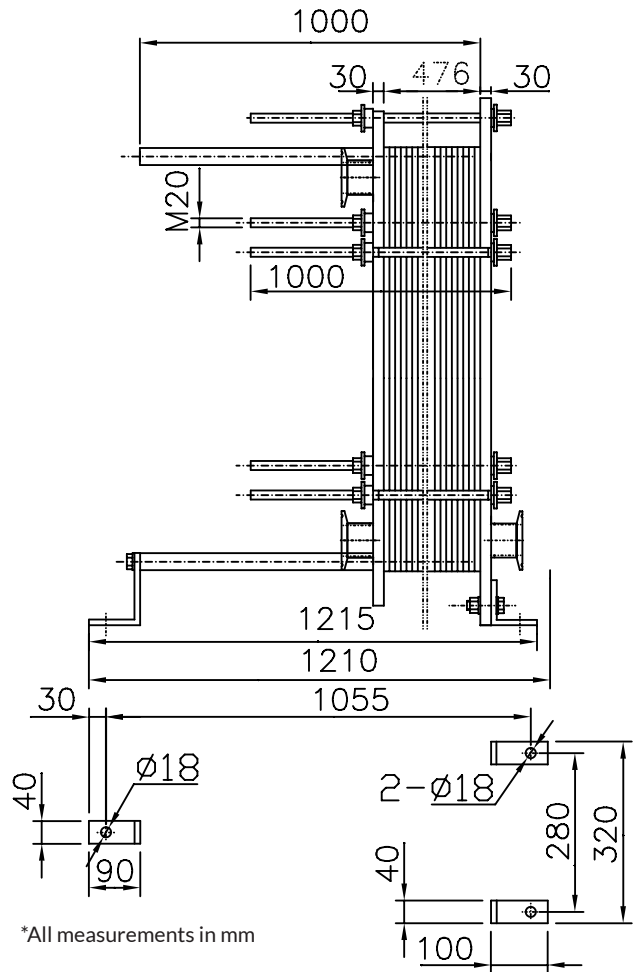
### FEATURES

- Fixed Frame Plate
- Upper Carrying Bar
- Lower Guiding Bar
- Support Column
- Movable Pressure Plate
- Clip-On EPDM Gaskets
- Tightening Bolts and Nuts
- Adjustable Feet

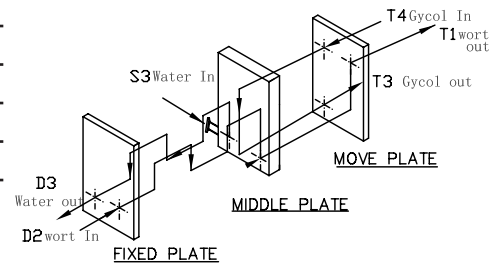
	Stage 1	Stage 2
No. of plates	113	23
No. of effective plates	111	21
No. of passes	4	1
Plate pack dimensions (Measure A)	476mm	

	Stage 1		Stage 2	
	Wort	Water	Wort	30% Glycol
Mass flow rate	6813kg/h	8203kg/h	6813kg/h	3737kg/h
Inlet temperature	100°C (212°F)	12.7°C (55°F)	17.2°C (63°F)	-2.2°C (28°F)
Outlet temperature	17.2°C (63°F)	77.7°C (172°F)	10°C (50°F)	8.3°C (47°F)
Pressure drop (Perm/Calc)	80.0/53.4kPa	80.0/79.2kPa	80.0/19.5kPa	80.0/6.92kPa
Velocity Connection In	0.945m/s	1.16m/s	0.929m/s	0.503m/s
Velocity Connection Out	0.929m/s	1.19m/s	0.927m/s	0.505m/s

Heat exchanged	619.1kW	52.92kW
Heat transfer area	15.49m <sup>2</sup>	2.9m <sup>2</sup>
O.H.T.C clean conditions	4711W/(m <sup>2</sup> *K)	2381W/(m <sup>2</sup> *K)
O.H.T.C service	4240W/(m <sup>2</sup> *K)	2103W/(m <sup>2</sup> *K)
Fouling Resistance* 10000	0.0 m <sup>2</sup> *K/W	0.0 m <sup>2</sup> *K/W
Additional Excess Surface	11%	13%
Mean Temperature	10.1 K	8.6 K



### CONNECTION LOCATIONS



### CONNECTION TYPES

