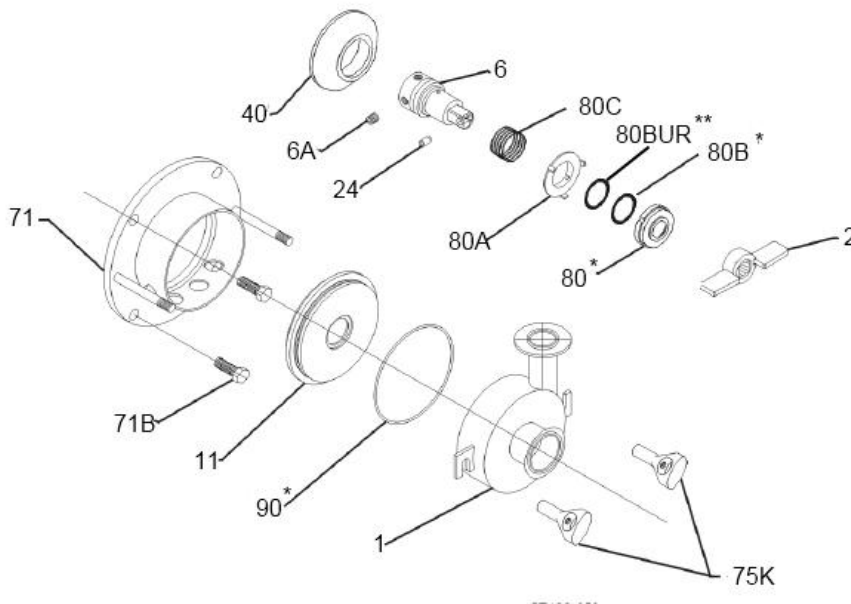


TOPLINE TF-C100 Seal

Instructions

- 1) Disconnect and lock out the power to the pump
- 2) Disconnect any hoses or piping from the pump and drain any liquid
- 3) Loosen the two wing nuts (75K)
- 4) Turn the casing (1) 30 degrees CW to disengage the tabs and pull it forward off of the pump adapter
- 5) Center the impeller pin (24) in the shaft (6) and then remove the impeller (2)
- 6) Remove the impeller pin (24) from the shaft (6) and put it in a safe place
- 7) Remove the back plate (11) to expose the seal assembly
- 8) Remove the carbon seal (80), o-ring (80B), high pressure back up ring (80BUR), cup (80A) and spring (80C)
NOTE: The high pressure back up ring is optional so you may not have one.
- 9) Clean and inspect the sealing surface on the back plate (11) If it is damaged replace or have it faced at a machine shop. DO NOT TRY TO SAND OR FILE THE SURFACE
- 10) To re assemble the pump reverse these steps making sure to put a little sanitary lubricant on the o-rings before installing them. Do not get lubricant on the face of the carbon seal (80)
- 11) Insure that the slot in the cup (80A) lines up with the pin on the shaft (6)



* Included in standard seal kit

** Optional high pressure back up ring



CPE SYSTEMS INC., UNIT A1 – 5279 STILL CREEK AVE, BURNABY, BC CANADA, V5C5V1
TEL: 1-800-668-2268 EMAIL: SALES@CPESYSTEMS.COM
WEB: WWW.CPESYSTEMS.COM