

# Eccentric Worm-Drive Pumps Type F 55 GS and F 55 GSB with planetary gear

## Recommended for transferring

Thin to medium viscosity liquids up to a maximum viscosity of 30,000 mPas (cP).

## Typical applications

Liquid transfer from barrels and/or containers. The eccentric worm-drive pumps type F 55 GS and F 55 GSB are particularly lightweight and easy-to-handle, making them extremely versatile pumps. The lightest model has a weight of 12 lbs only. The weight of the complete pump depends on the immersion length and motor assembly.

## Seal type

Type F 55 GS with mechanical seal or Type F 55 GSB with stuffing box

## Available drive motors

Commutator motors or compressed air motors.

An infinitely variable speed variator – also available on explosion-proof models – allows the operator to set pump capacity to specific delivery requirements.

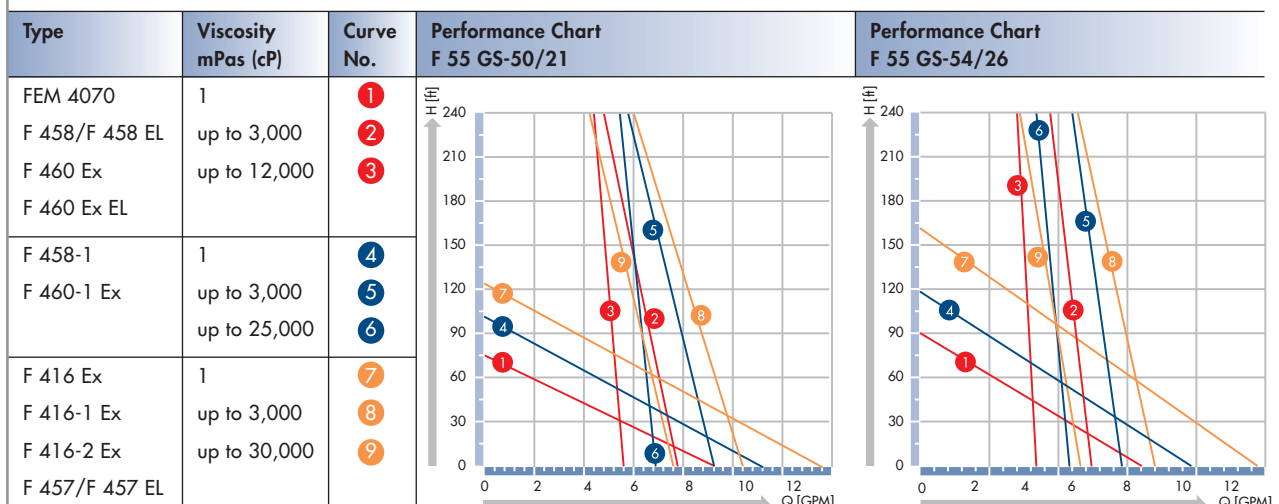
## Scope of supply

A complete eccentric worm-drive pump consists of: drive motor, pump, stator and hose connection.



F 55 GS-54/26  
with commutator motor F 460 Ex

## Technical Data



Values  $\pm$  10% at 930 rpm. Delivery rate depends on the velocity of the fluid.

Type	F 55 GS-50/21	F 55 GSB-50/21	F 55 GSXA-50/21	F 55 GSXB-50/21
Delivery rate max.	8 GPM	8 GPM	8 GPM	8 GPM
Delivery head max.	116 PSI	116 PSI	116 PSI	116 PSI
Thread on outlet	G 1½ A (BSP 1½" male)	G 1½ A (BSP 1½" male)	G 1½ A (BSP 1½" male)	G 1½ A (BSP 1½" male)
Seal type	mechanical seal in ceramic oxide, o-rings in FKM	stuffing box in PTFE, re-adjustable	mechanical seal in ceramic oxide, o-rings in FKM	mechanical seal in ceramic oxide, o-rings in FKM
Material	outer tube, torsion shaft and eccentric worm in Stainless steel 316 Ti			
Outer-Ø	2"	2"	2"	2"
Stator	not included with the pump, separate part number please see list below		Stator PTFE white, included with the pump	Stator PTFE black, included with the pump
Explosion-proof according to ATEX-Directive 94/9/EC	not approved for transferring high flammability liquids in Zone 0		EC Type Examination Certificate No. PTB 99 ATEX 4050 X (Ex II 1/2 G IIA T4)	EC Type Examination Certificate No. PTB 99 ATEX 4051 X (Ex II 1/2 G IIB T4)
Part No./Weight				
Immersion length 27"	550 24 807/9.5 lbs	550 24 838/9.5 lbs	550 23 030/10.5 lbs	550 23 410/10.5 lbs
Immersion length 39"	550 24 810/11 lbs	550 24 839/11 lbs	550 23 031/12 lbs	550 23 411/12 lbs
Immersion length 47"	550 24 812/12 lbs	550 24 840/12 lbs	550 23 032/13 lbs	550 23 412/13 lbs

Type	F 55 GS-54/26	F 55 GSB-54/26
Delivery rate max.	13 GPM	13 GPM
Delivery head max.	116 PSI	116 PSI
Thread on outlet	G 1½ A (BSP 1½" male)	G 1½ A (BSP 1½" male)
Seal type	mechanical seal in ceramic oxide, o-rings in FKM	stuffing box in PTFE, re-adjustable
Material	outer tube, torsion shaft and eccentric worm in Stainless steel 316 Ti	
Outer-Ø	2¼"	2¼"
Stator	not included with the pump, separate part number please see list below	
Part No./Weight		
Immersion length 27"	550 25 675/10.5 lbs	550 25 697/10.5 lbs
Immersion length 39"	550 25 676/12 lbs	550 25 698/12 lbs
Immersion length 47"	550 25 677/13 lbs	550 25 699/13 lbs

Other lengths on request.

### Stators for Eccentric Worm-Drive Pumps Type F 55 GS and F 55 GSB

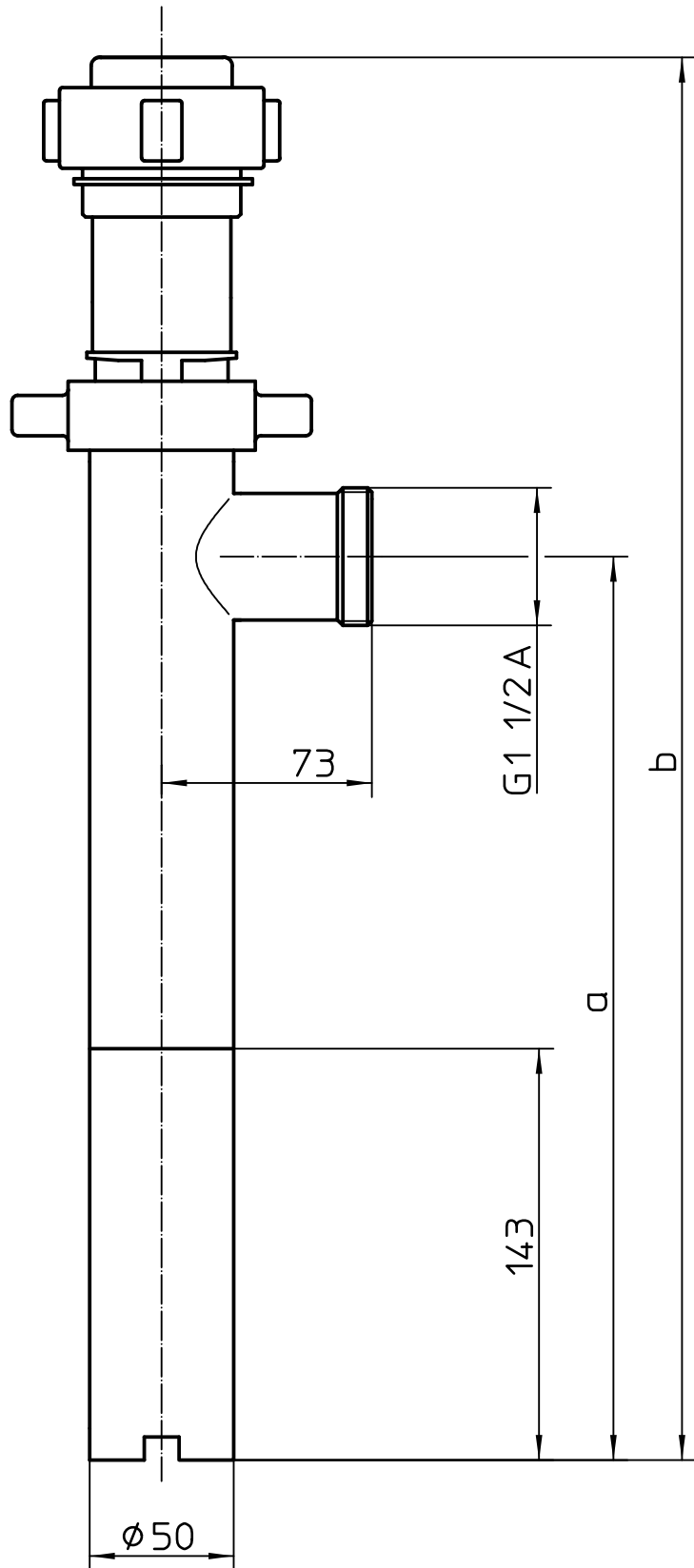
Material	Temperature	Recommended for	Part No./Weight outer-Ø 50 mm	Part No./Weight outer-Ø 54 mm
NBR white (Nitrile Butadiene Rubber) elastomer	max. 194 °F	particularly suitable for oils and greases, also for food products	550 24 248/1.1 lbs	550 25 621/1.3 lbs
NBR black (Nitrile Butadiene Rubber) elastomer	max. 194 °F	particularly suitable for oils and greases, not suitable for food products	550 24 244/1.1 lbs	550 25 620/1.3 lbs
FKM (Fluor Rubber) elastomer	max. 302 °F	excellent chemical resistance to all different kind of products, not suitable for food products	550 24 247/1.1 lbs	550 25 619/1.3 lbs
PTFE (Ethylene-Tetra-Fluor-Ethylene) solid material	max. 302 °F	excellent chemical resistance, particularly suitable for food products, pharmaceuticals and cosmetics	550 24 256/1.3 lbs	550 25 625/1.5 lbs

### Hose Connection in Stainless steel, complete with union nut

Type F 55 S and F 55 G SB	Part No./Weight
for flexible hose, inside 1" ID	959 04 002/0.4 lbs
for flexible hose, inside 1¼" ID	959 04 003/0.7 lbs
for flexible hose, inside 1½" ID	959 04 004/0.8 lbs

1200	1214	1387
1000	1014	1187
700	714	887
ET	a	b

ET=Eintauchtiefe  
 Immersion length  
 Longueur d'immersion



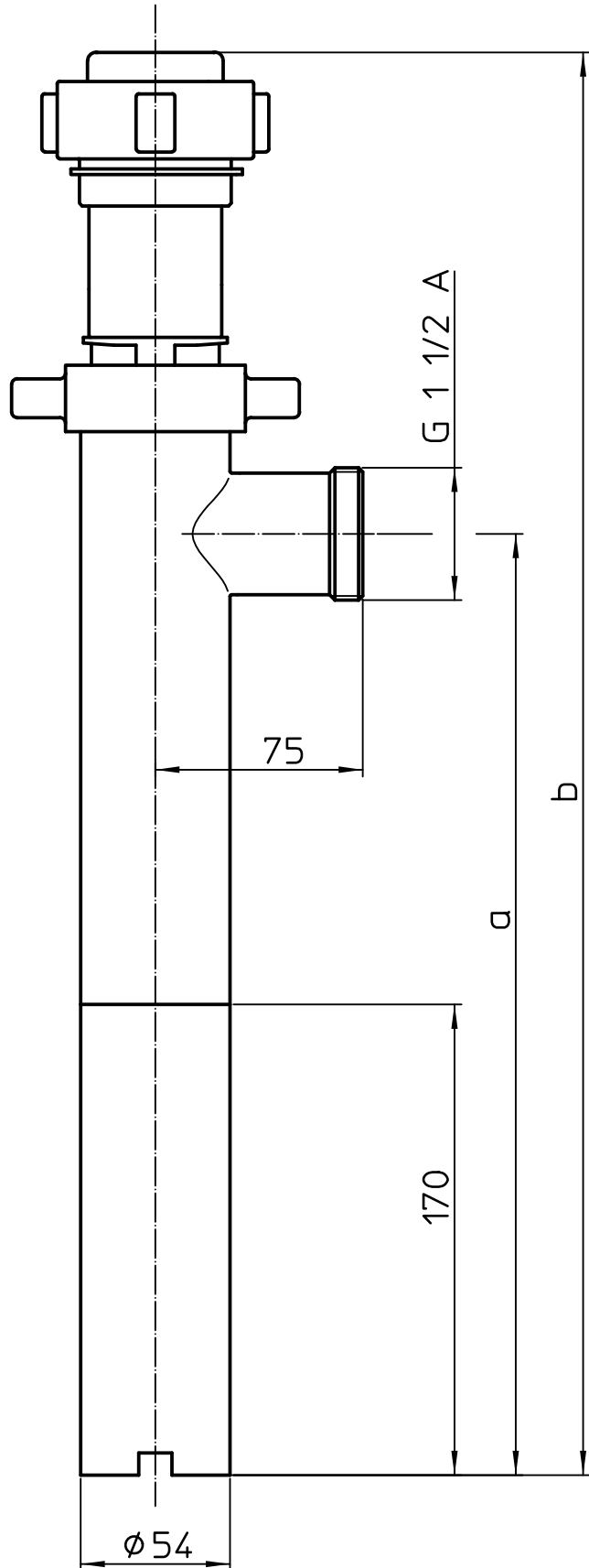
Bemerkung:  
 Bei Montage von Motor und Pumpe  
 reduziert sich die Gesamthöhe um 16mm!

Note:  
 With motor and pump assembled,  
 the total length reduces by 16mm!

La hauteur totale se réduit  
 de 16mm lorsque le moteur  
 est monté sur la pompe.

1200	1240	1414
1000	1040	1214
700	740	914
ET	a	b

ET=Eintauchtiefe  
 Immersion length  
 Longueur d'immersion



Bemerkung:  
 Bei Montage von Motor und Pumpe  
 reduziert sich die Gesamthöhe um 16mm!

Note:  
 With motor and pump assembled,  
 the total length reduces by 16mm!

La hauteur totale se réduit  
 de 16mm lorsque le moteur  
 est monté sur la pompe.