

REVISION HISTORY			
REV	DESCRIPTION	DATE	BY
1	INDIVIDUAL PARTS	5/18/15	
2	ADDED SPRING TO PARTS LIST	10/31/16	KL

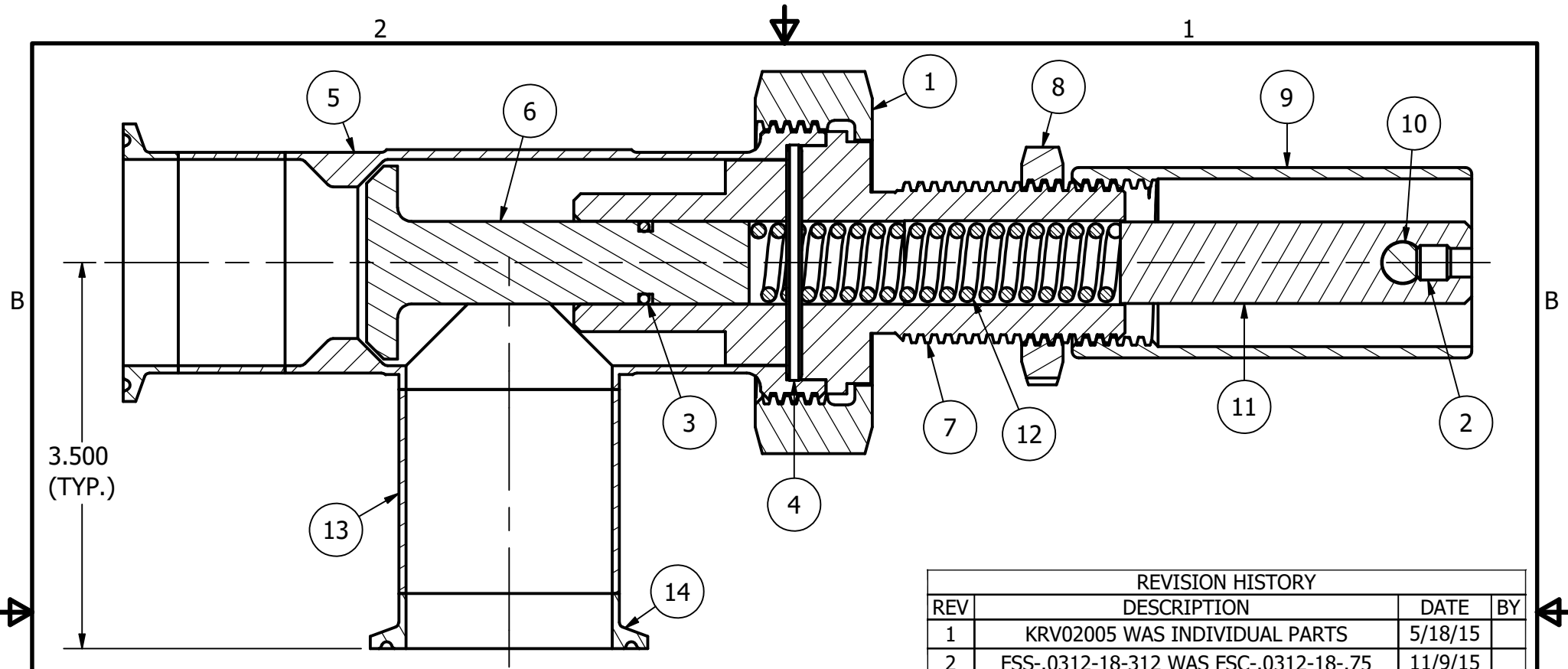
ITEM	QTY	PART #	DESCRIPTION
1	1	13H-1.5	1.5 Hex Nut
2	1	FSS-0312-18-.312	5/16-18 Set Screw
3	1	ORING-113-FDA	-113 O-Ring
4	1	ORING-220-FDA	-220 O-Ring
5	1	KRV01505	1.5 Body
6	1	KRV01520	1.5 Stopper
7	1	KRV01530	1.5 Guide
8	1	KRV02035	Lock Nut
9	1	KRV02041	Handle Nut
10	1	KRV02043	Handle
11	1	KRV02044	Spring Stem
12	1	KRVS0100	Standard Spring (Medium)

Spring Pressure Only (psi)			
Valve Size	Light	Medium	Heavy
	Min. / Max.	Min. / Max.	Min. / Max.
1/2" - 1"	6 / 55	18 / 90	44 / 150
1 1/2"	4 / 35	12 / 60	30 / 100
2"	2 / 15	6 / 30	15 / 50
2 1/2"	1 / 10	4 / 15	9 / 30
3"	0.5 / 5	2 / 10	5 / 15

**CPE SYSTEMS INC**

TITLE  
**1.5 PRESSURE RELIEF VALVE TRI CLAMP**

DWG NO: D60RTHMP-1 1/2"	REV 2
SCALE: .75 : 1	SHEET 1 OF 1



ITEM	QTY	PART #	DESCRIPTION
1	1	13H-2	2.0 Hex Nut
2	1	FSS-0312-18-.312	5/16-18 Set Screw
3	1	KCGA1130	-113 O-Ring
4	1	KCGA2250	-225 O-Ring
5	1	KRV02005	2.0 Body
6	1	KRV02020	2.0 Stopper
7	1	KRV02030	2.0 Guide
8	1	KRV02035	Lock Nut
9	1	KRV02041	Handle Nut
10	1	KRV02043	Handle
11	1	KRV02044	Spring Stem
12	1	KRVS01000	Standard Spring (Medium)
13	2	SAN02007	2" x .065" WALL TUBING
14	2	14WMP-2	14WMP-2"

REVISION HISTORY			
REV	DESCRIPTION	DATE	BY
1	KRV02005 WAS INDIVIDUAL PARTS	5/18/15	
2	FSS-.0312-18-312 WAS FSC-.0312-18-.75	11/9/15	
3	ADDED STANDARD SPRING TO PARTS LIST	10/28/16	KL

Spring Pressure Only (psi)			
Valve Size	Light	Medium	Heavy
	Min. / Max.	Min. / Max.	Min. / Max.
1/2" - 1"	6 / 55	18 / 90	44 / 150
1 1/2"	4 / 35	12 / 60	30 / 100
2"	2 / 15	6 / 30	15 / 50
2 1/2"	1 / 10	4 / 15	9 / 30
3	0.5 / 5	2 / 10	5 / 15

**CPE SYSTEMS INC**

TITLE  
**2.0 PRESSURE RELIEF VALVE TRI CLAMP**

DWG NO: <b>D60RTHMP-2.0</b>	REV <b>3</b>
SCALE: <b>.75 : 1</b>	SHEET <b>1</b> OF <b>1</b>