



# CPE C100 MD CENTRIFUGAL PUMP ASSEMBLY (3/4 - 1 1/2 HP)

FOR CRAFT FOOD AND BEVERAGE INDUSTRIES



**PUMPS**

-

**HOSES**

-

**HEAT EXCHANGERS**

-

**FLOW METERS**

-

**GASKETS**

-

**VALVES**

-

**FITTINGS**

-

**THERMOMETERS**

-

**PORTABLE SYSTEMS**

-

**AND MORE**

## Technical Specifications



### Materials

Parts in contact w/ product:	Stainless steel AISI 316L
Pump/ motor adapter:	Stainless steel AISI 304
Gaskets in contact w/ product:	Buna (EPDM Optional)

### Mechanical seal

Rotary Seal:	Carbon
Stationary Seal:	Stainless steel
Gaskets:	Buna (EPDM Optional)
Surface finish:	Bright polish
Motor:	S.S Premium Efficiency Nema C Face

### Operating limits

Nominal pressure:	5bar 60 PSI
Temperature range:	14 °F to 248 °F 284 °F (SIP, max. 30 min.)

Maximum flow:	50 m <sup>3</sup> /h 70US GPM
Maximum differential head:	21 m 60 ft
Maximum speed:	3500 rpm

## Port Connection

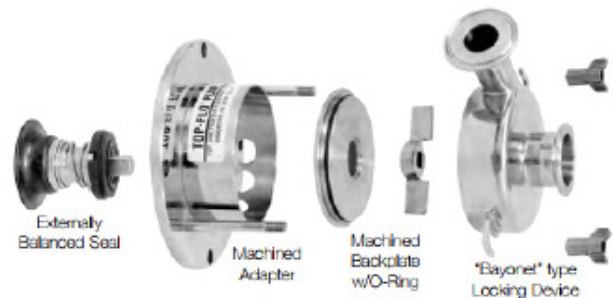
Come standard with M Tri-Clamp style connections. but we can provide any connection style possible. Including Acme Bevel Seat Thread, NPT, Flanged or Weld.

Model	Inlet Opt.	Outlet Opt.	Max Impeller
C100	1 1/2"	1"	3.68"
C114	1 1/2" - 2"	1 1/2"	4"
C216	2"	1 1/2"	6"
C218	2" - 3"	1 1/2"	8"
C328	3" - 4"	2"	8"

C-series (Close Coupled) Centrifugal Pumps are the most common pumps used in Craft Breweries. Our C-Series is made in North America, 3A approved and provides high capacity at a low price. They feature heavy duty stainless steel construction with a stainless steel washdown motor that make cleaning easier and if well maintained, will last a lifetime. These pumps will give you years of excellent service and when needed, replacement parts are interchangeable with most major brands of sanitary C-series pumps.



HorsePower	Flow Rate	Head
1/2 HP	45 GPM	50 ft.
3/4 HP	60 GPM	55 ft.
1 HP	70 GPM	55 ft.





# Variable Speed Controller

Horsepower	3/4 to 1 1/2
1Ø Input	115/230 VAC, 50/60 Hz
3Ø Input	230 VAC, 50/60 Hz
3Ø Output	230 VAC, 50/60 Hz
Enclosure	NEMA-4X/IV-65
Dimensions approx.	
3/4 to 1 HP	9.5" X 5.5" X 5.9"
1 1/2 HP	9.8" X 7.6" X 7.3"



Our AC VFDs provide variable speed for AC Induction motors from 1/8 through to 3 horsepower. They are available in 115, 208/230, and 400/460 VAC - 50/60 Hz with 1ph and 3ph input. All KB's AC Drives contain Sensorless Flux Vector Compensation with Static-Auto-Tune. This provides excellent speed regulation from zero to full load over a wide frequency range. These drives provide auto energy savings at light loads and smooth motor torque operation.

## Features

- Sensorless Flux Vector Control
- Run/Fault Relay Output Contacts
- Ride-Through momentary power loss
- Short Circuit Protection, phase to phase
- Digital Display with LED Status Indicators
- Undervoltage and Overvoltage Protection
- Holding Torque at Zero Speed in "Stop" mode
- Electronic Inrush Current Limit (EICLTM) Protection
- Rugged Die-Cast Aluminum Enclosure with hinged cover
- Regeneration eliminates tripping
- Powerful 200% Starting Torque
- Built-in Potentiometer
- Jog-Local Remote

## Pump Cart



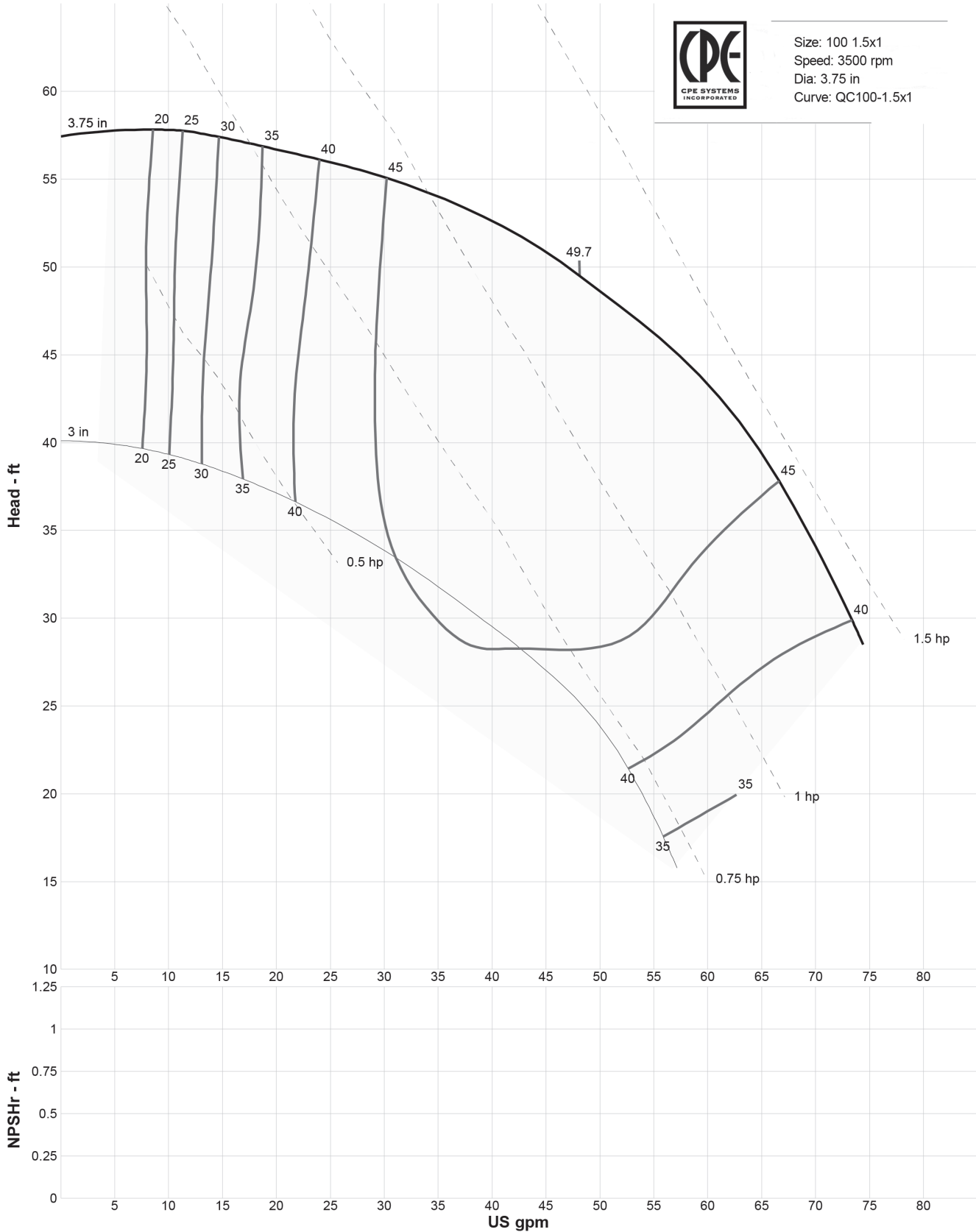
Custom designed for the craft food and beverage industry, this is our smallest pump cart built for pumps up to 2HP. This cart is ergonomic, tilt draining, has a small footprint and has easy maneuverability. All parts hand welded in Canada for quality assurance and durability.

## Material

Frame	16 ga stainless steel square tube
Handle	16 ga stainless steel square tube
Platform	14 ga Stainless steel AISI 304
Axle	1/2 ga Stainless steel rod axle
Wheels	5" non marking neoprene wheels with sliding pin clips



# Pump Capacity Curves





# Viscosity and Specific Gravity Table

Product	Specific Gravity	Viscosity
Acetic Acid		
5%	1.01	
10%	1.01	31.7 SSU @ 59°F
50%	1.06	33 SSU @ 59°F
80%	1.08	35 SSU @ 59°F
Animal Fat	0.9	130 SSU @ 115°F
		50 SSU @ 200°F
Barbecue Sauce	1.05	11,500 SSU @ 40-75°F
Beer	1.02	32 SSU @ 68°F
Blood - Animal	.93-.98	15,000 SSU @ 55°F
Butter	.93-.98	15,000 SSU @ 55°F
		440 SSU @ 90°F
		220 SSU @ 115°F
Coconut Oil	0.92	125 SSU @ 106°F
Corn Oil	0.92	135 SSU @ 130°F
		54 SSU @ 212°F
Corn Starch Solutions		
22 Baume	1.18	150 SSu @ 70°F
		130 SSU @ 100°F
24 Baume	1.2	600 SSU @ 70°F
		440 SSU @ 100°F
25 Baume	1.21	1400 SSU @ 70°F
		800 SSU @ 100°F
Cottage Cheese	1.02	4,300 SSU
Dressing		
Cream (Sweet)	1	73 SSU
	.99	140 SSU
	.99	215 SSU
Egg Yolk	1.12	21,500 @ 35°F
Gelatin	1.01	1,380 - 2,580 SSU
		@ 160°F
Glucose	1.35 - 1.44	35M - 100M SSU
		@ 100°F
		4M - 11M @ 150°F

Product	Specific Gravity	Viscosity
Honey	1.3	1250 - 1425
		SSU @ 100°F
Ice Cream Mix	1.15	1050 SSU @ 46°F
Lard	0.96	287 @ 100°F
Linseed Oil	.92-.94	143 @ 100°F
		93 @ 130°F
Malt Syrup	1.41	85,400 SSU @ 77°F
Maple Syrup	1.37	2,000 SSU @ 68°F
Margarine	0.93	13,900
		SSU @ 84°F
Milk	1.02 - 1.05	31.5 @ 68°F
Molasses		
A. First	1.4 - 1.46	1300 - 23,500 SSU
		@ 100°F
		700 - 8160 SSU
		@ 130°F
B. Second	1.43 - 1.48	6535 - 61,180 SSU
		@ 100°F
		3058 - 15294 SSU
		@ 130°F
C. Blackstrap	1.46 - 1.49	12,190 - 255M
		@ 100°F
Mustard	1	17,000 SSU
		@ 85°F
Olive Oil	.91 - .92	200 SSU
		@ 100°F
Peanut Butter	1.2	77,400 SSU @
		110 - 140°F
Sesame Seed Oil	0.92	184 SSU @ 100°F
		110 @ 130°F
Soy Bean Oil	0.91	500 SSU @ 44°F
Tomato Paste	1.14	60M - 80 M SSU
		21M SSU approx.
Water	1	31 SSU @ 68°F