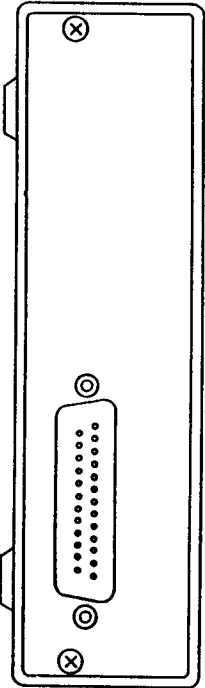
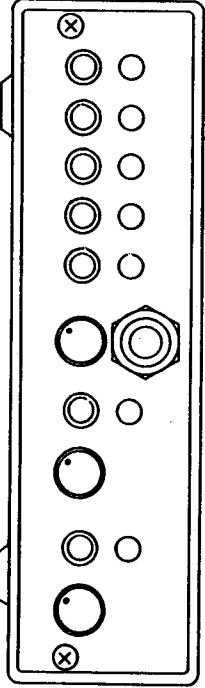


BACK VIEW



FRONT VIEW



REV	DESCRIPTION	DATE

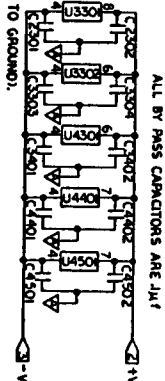
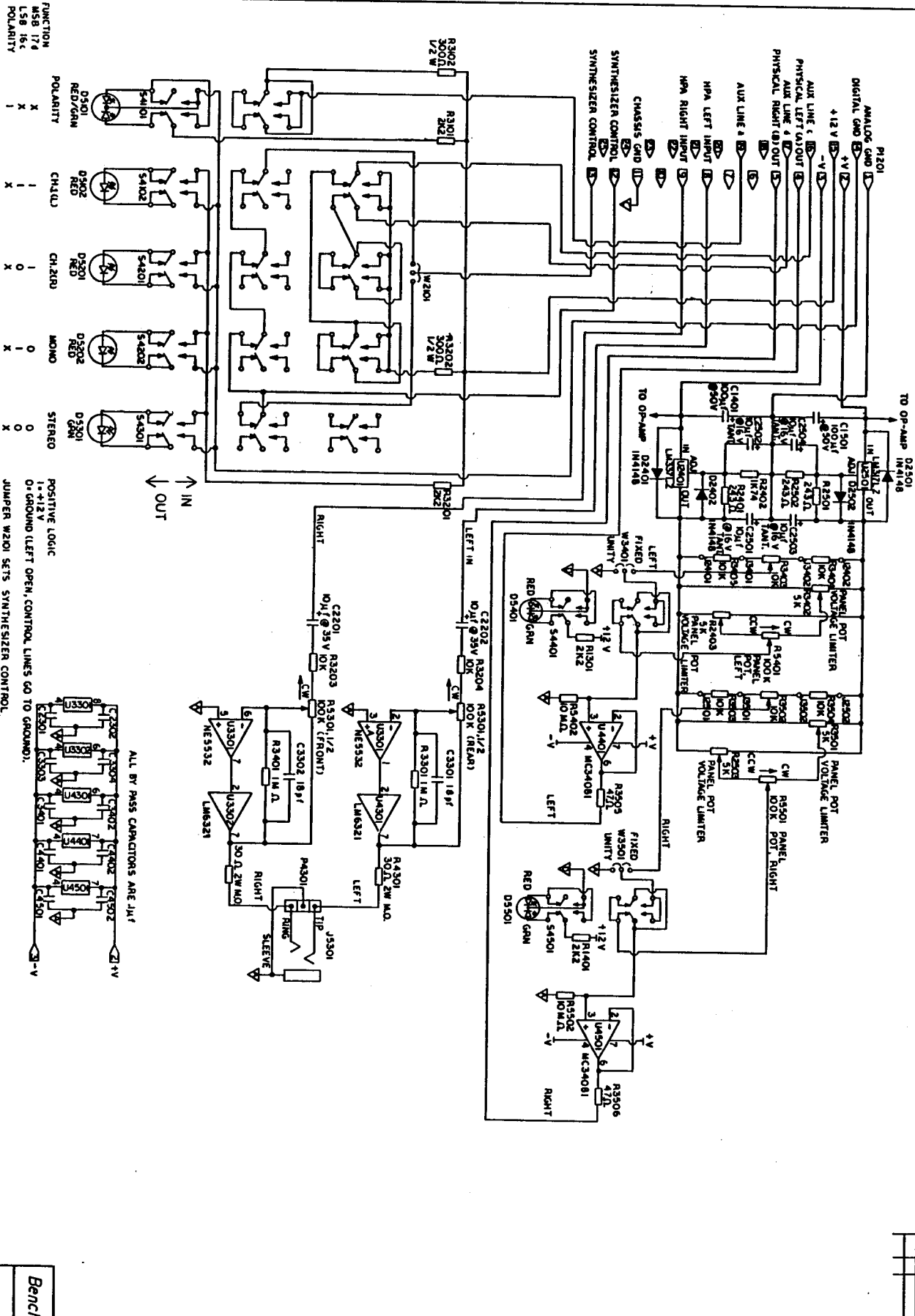
**Benchmark Media Systems**

RGK-24

1/9/79

1500-05513-000

250084



ALL BY PASS CAPACITORS ARE .1μF

POSITIVE LOGIC  
 1 = +12V  
 0 = GROUND (LEFT OPEN, CONTROL LINES GO TO GROUND).

JUMPER W201 SETS SYNTHESIZER CONTROL.  
 RIGHT POSITION STEREO SELECTION WILL BREAK CONTROL LINE.  
 LEFT POSITION STEREO SELECTION WILL "MAKE" CONTROL LINE.

FUNCTION	MSB 174	LSB 164	POLARITY
D501 RED/GM	X	X	I
S4101	X	X	I
D902 RED	I	X	I
S4202	I	X	I
D9201 RED	I	X	I
S4201	I	X	I
D9202 RED	0	X	I
S4202	0	X	I
D9201 RED	0	X	I
S4201	0	X	I
D9202 RED	0	X	I
S4202	0	X	I

Benchmark Media Systems

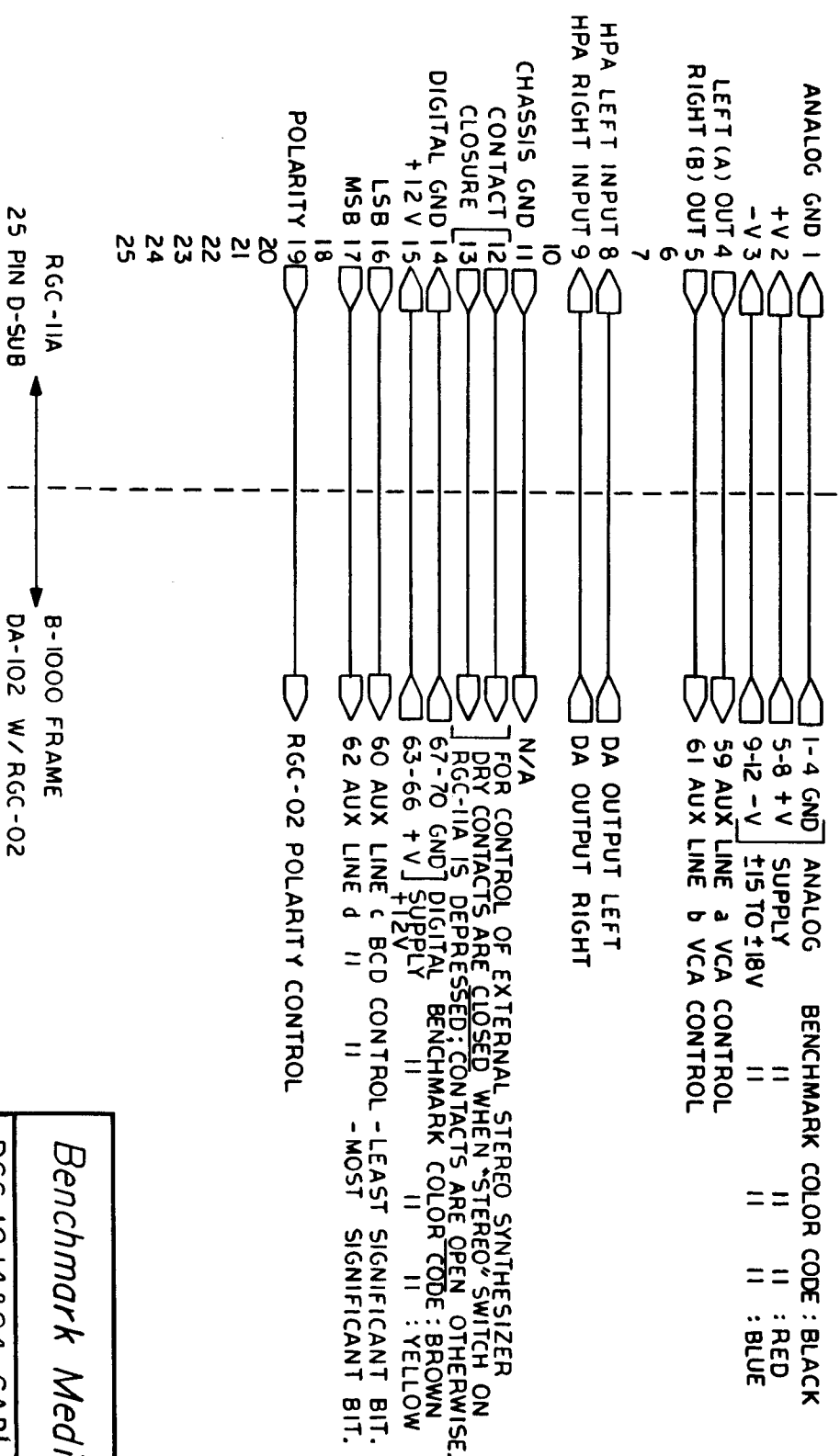
RGC-24

1/82/21

500-05513-000

450086

REVISIONS

ANALOG GND 1 1-4 GND ANALOG BENCHMARK COLOR CODE : BLACK  
 +V 2 5-8 +V SUPPLY II II : RED  
 -V 3 9-12 -V ±15 TO ±18V II II : BLUE  
 LEFT (A) OUT 4 59 AUX LINE a VCA CONTROL  
 RIGHT (B) OUT 5 61 AUX LINE b VCA CONTROL

HPA LEFT INPUT 8 DA OUTPUT LEFT  
 HPA RIGHT INPUT 9 DA OUTPUT RIGHT

CHASSIS GND 11 N/A  
 CONTACT 12 ] FOR CONTROL OF EXTERNAL STEREO SYNTHESIZER  
 CLOSURE 13 ] DRY CONTACTS ARE CLOSED WHEN "STEREO" SWITCH ON  
 DIGITAL +12V 14 ] RGC-11A IS DEPRESSED; CONTACTS ARE OPEN OTHERWISE.  
 +12V 15 ] BENCHMARK COLOR CODE : BROWN  
 LSB 16 ] SUPPLY II II : YELLOW  
 MSB 17 ] ±12V  
 60 AUX LINE c BCD CONTROL -LEAST SIGNIFICANT BIT.  
 62 AUX LINE d II -MOST SIGNIFICANT BIT.  
 POLARITY 19 RGC-02 POLARITY CONTROL

RGC-11A ← B-1000 FRAME  
 → DA-102 W/ RGC-02

*Benchmark Media Systems*

RGC-12.14&24 CABLE INTERFACE

SCALE	CHECKED BY	DRAWN BY
DATE 1/15/91	<i>Arti Boudik</i>	J.PENFIELD
SIZE B	DRAWING NO.	350051