

L-810 Red LED Obstruction Lights

Class I, Div. 2 and ATEX / IECEx - V AC models

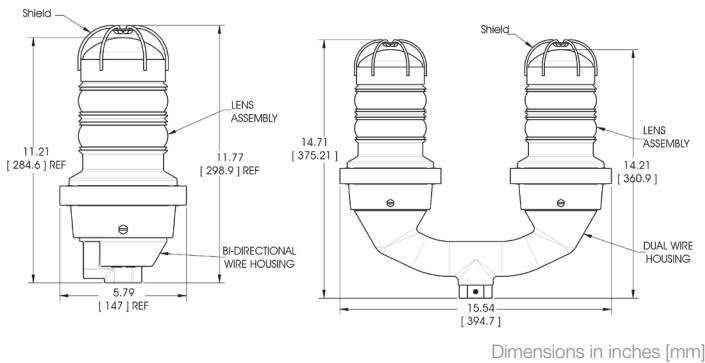


Certifications & Compliance

- FAA approved (Check FAA Website for current certification)
- Class I, Div 2, Groups A, B, C, D
- ATEX / IECEx Zone 2
- IECEx SIR 08.0018X
- Sira 06ATEX4372X
- UL1598
- UL844
- IP65 / 67
- NEMA 4X
- ICAO (Annex 14 - Fourth Edition, July 2004), DGAC Mexico
- Canadian Aviation Regulation CAR 621.9 (Transport Canada)

Certifications & Ratings

- 5 year warranty
- Uses 90% less energy than an incandescent
- Weather/corrosion resistant lamp assembly and housing
- Resistant to shock and vibration
- Available as single or dual unit
- Flash models available
- Withstand wind in excess of 150 mph (240 kph), salt fog



Temperature Ratings

Class I Div. 2 models	ATEX / IECEx models
Ambient Temperature Range T4A	Ambient Temperature Range T4A
-67°F to +131°F (-55°C to +55°C)	-67°F to +131°F (-55°C to +55°C)

Mechanical Information

Single Units

Fixture weight:	7.14 lbs (3.24 kg)
Mounting:	Threaded 1" NPT and 3/4" NPT bottom hub for mounting

Dual Units

Fixture weight:	16.06 lbs (7.28 kg)
Mounting:	Threaded 1" NPT and 3/4" NPT bottom hub for mounting

Electrical specifications

Volt Amps:	44 VA (120V AC) -+10% 67 VA (230V AC Units) -+15%
Input Power:	14.5 W (120V AC Units) 16.0 W (230V AC Units)
Operating Temp:	-67°F to +131°F (-55°C to +55°C)

Construction

Housing:	Cast aluminum
Lens:	Glass
Accessories (Hardware):	Stainless steel

All values typical unless otherwise stated (tolerance +/- 10%)

US Patent # 6,425,678