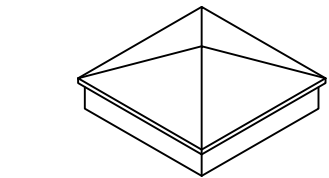
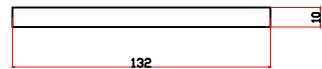
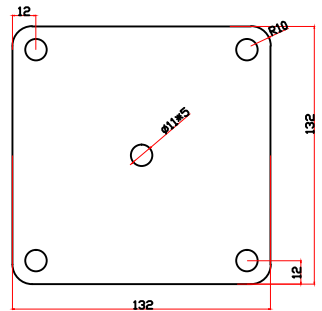


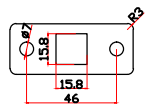
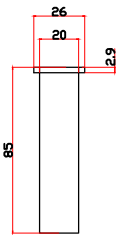
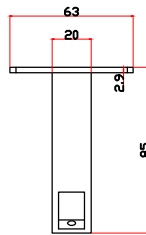
A



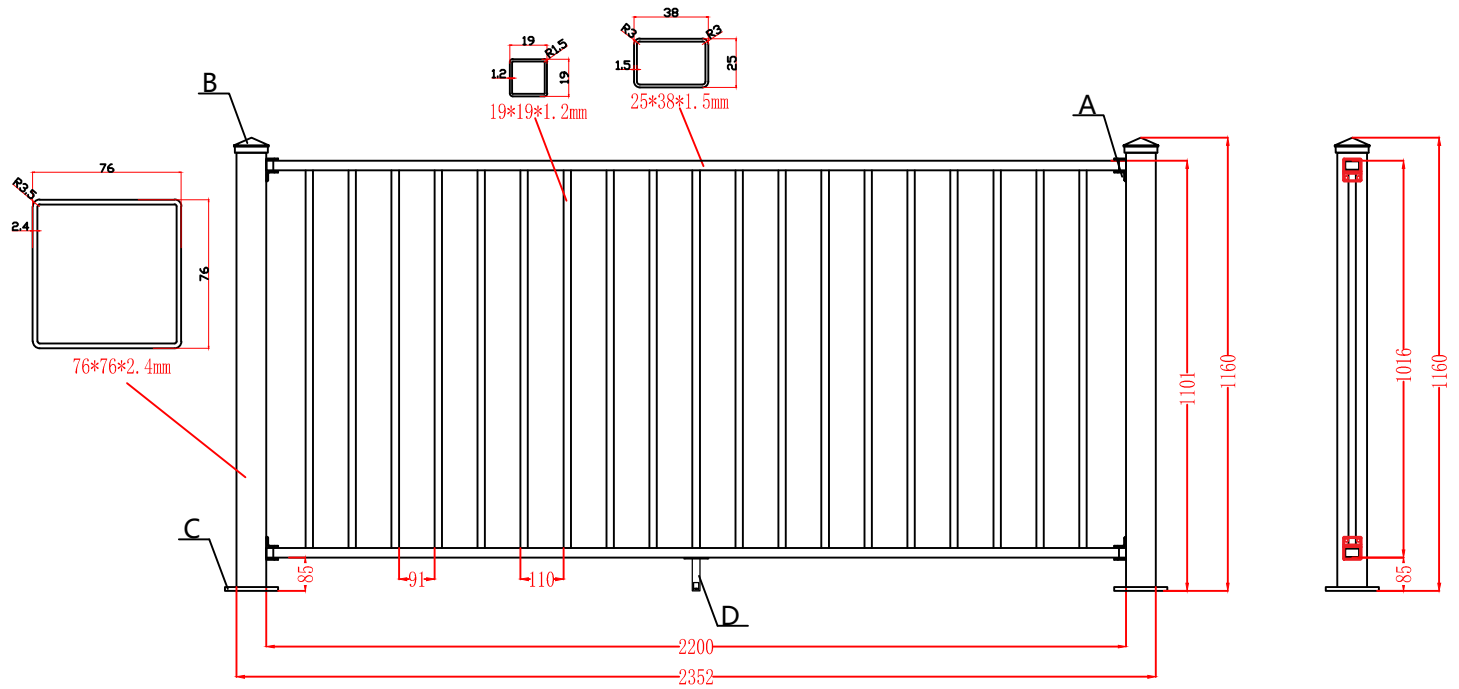
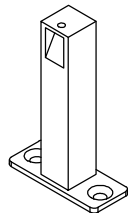
B



C



D



TYPICAL FASTENERS FOR MOUNTING PLATE. SOLID BACKING TO SUFFICE THE TYPE OF FASTENERS BELOW:

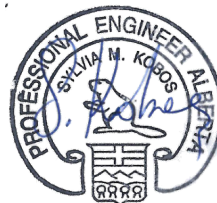
WOOD DECK:

5/16" X 4" GRK RSS, SPAX or equivalent fully embedded into solid No.1 or No.2 wood backing (SPF or Fir).

CONCRETE: (UP TO 10' ABOVE GRADE) (f_c = 20.7 MPa Minimum)

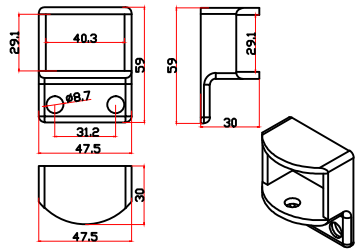
3/8"ø X 3 3/4" S.S WEDGE ANCHORS w/ minimum 2 1/2" embed

ALL MATERIAL IS MADE OF ALUMINUM 6063-T5 ALLOY.

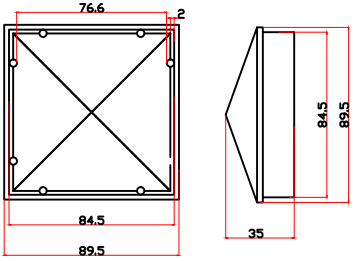


MAY 4, 2023

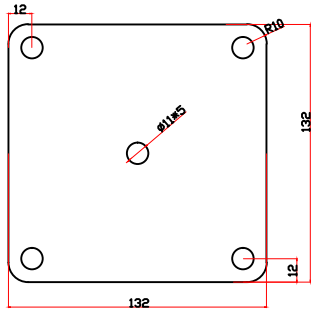
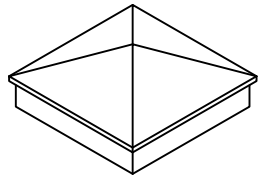
AXXENT BUILDING PRODUCTS LTD.
#191-6433 BOWNESS RD. NW
CALGARY, AB T3B 0E6



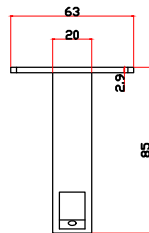
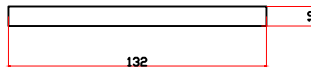
A



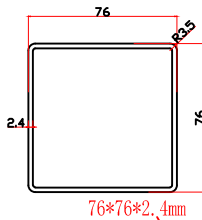
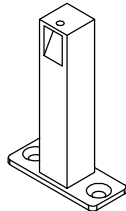
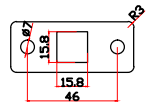
B



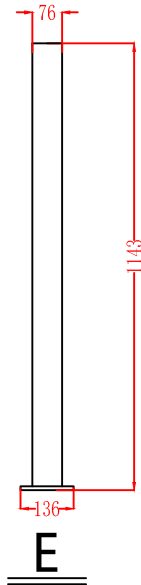
C



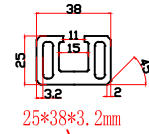
D



40mm max gap

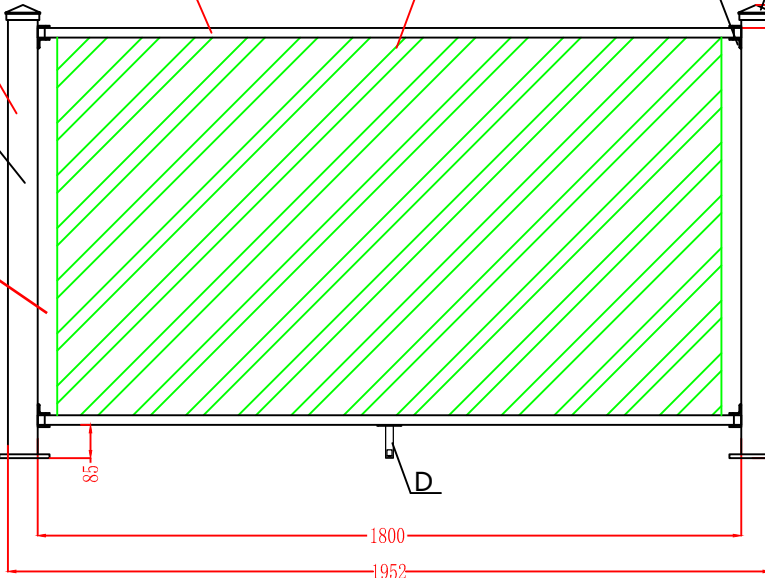


E

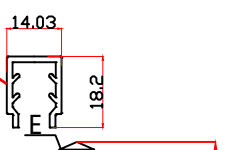


25*38*3.2mm

5mm glass



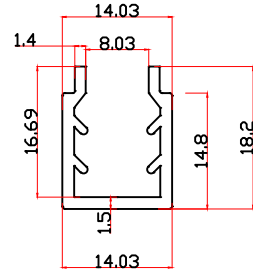
Continuous gasket for top & bottom rail



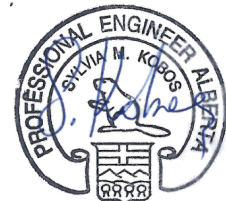
18.2

FOR GLASS POST TO POST INSTALLATION

- 1350mm MAX SPAN WITHOUT SUPPORT LEG
- 1800mm MAX SPAN WITH SUPPORT LEG



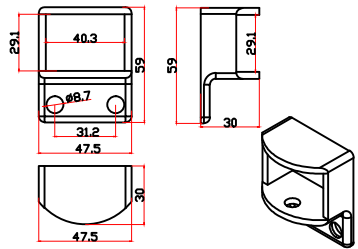
E



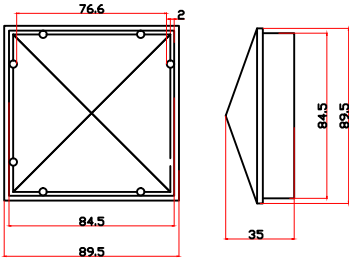
MAY 4, 2023

ALL MATERIAL IS MADE OF ALUMINUM 6063-T5 ALLOY.

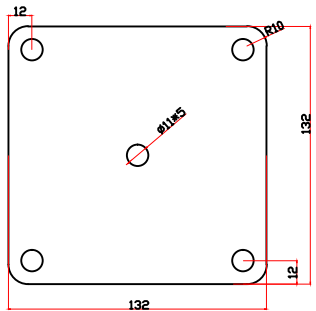
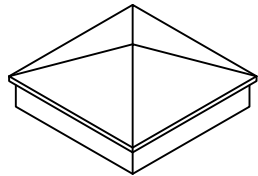
AXXENT BUILDING PRODUCTS LTD.
#191-6433 BOWNESS RD. NW
CALGARY, AB T3B 0E6



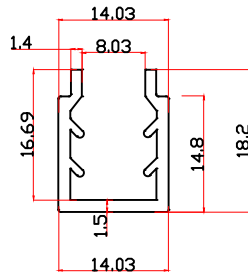
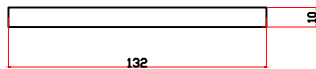
A



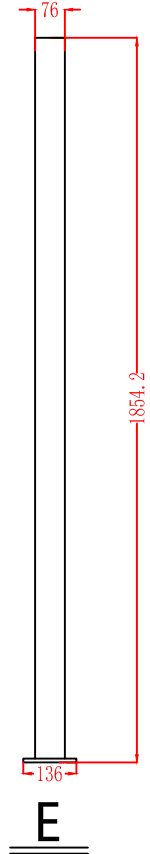
B



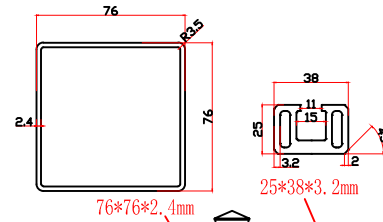
C



D



E

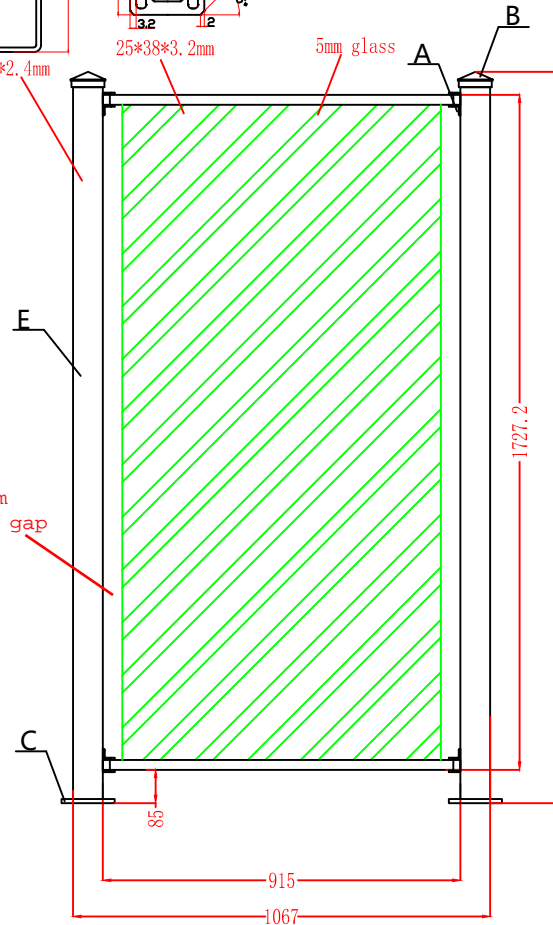


76*76*2.4mm

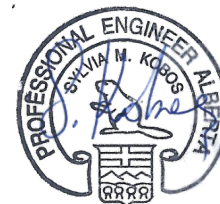
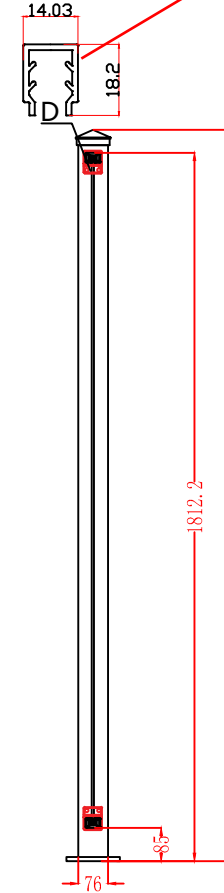
25*38*3.2mm

5mm glass

40mm max gap



Continuous gasket for top & bottom rail



MAY 4, 2023

ALL MATERIAL IS MADE OF ALUMINUM 6063-T5 ALLOY.

AXXENT BUILDING PRODUCTS LTD.
#191-6433 BOWNESS RD. NW
CALGARY, AB T3B 0E6