



## NEW: SKYFORCE SLIM

### SKYFORCE

- | Quick and simple mounting
- | Different surface finishes
- | Available for different glass thicknesses, pre-assembled as set
- | Max. width up to 3000 mm
- | Suitable for plastic, aluminium and wooden frames
- | Mounting on stone, concrete and steel
- | Independently tested and certified to BS6180:2011
- | Patented unique drainage systems

# SKYFORCE

Fall protections for Juliet Balconies

## The System of Invisibility.

Once again **ONLEVEL** sets innovative trends with the **SKYFORCE** fall protection for juliet balconies. It is the first practically invisible system application. But what is even better: It is the best and most cost-effective system application on the market. There is no system which can be mounted easier and quicker. This saves you unnecessary frustration and gives you valuable additional time and profit potential. Thanks to the **ONLEVEL** "Prefabricated System", you save 45 minutes of mounting time per set.

We have consistently implemented both the quick and easy installation as well as the classical and timeless design. The fall protection can be easily installed behind the shutter guide rails with simple tools. As a matter of course, **SKYFORCE** is also compatible with any window profile: Thanks to our unrivalled and predestined Slide & Click Technique, the system can be mounted directly onto the window frame or masonry. Best of all, you can cover all glass thicknesses, heights and widths with only one profile.



**LINE LOADS UP TO 1.5kN**

## Essential Features

- | Easy ordering thanks to packaging sets of 500, 700, 900, 1000, 1100 and 1200 mm
- | **ONLEVEL** Prefabricated-System - Mounting advantage of up to 45 minutes per set
- | Storage lengths of 5000 mm available to allow customer made solutions
- | With drainage channels
- | Nearly tool-free installation
- | Colour design possible according to RAL
- | Suitable for plastic, aluminium wooden and metal frames
- | With General Building Inspection Test Certificate ABP and BS6180
- | **SKYFORCE** glass dimensions acc. to ABP:

Glass width up to	Glass thickness	Glass height
1200 mm	10.76 mm	800 - 1200 mm
1400 mm	12.76 mm	500 - 1200 mm
1700 mm	16.76 mm	500 - 1200 mm
3000 mm	21.52 mm	300 - 1200 mm

For additional special dimensions please refer to the test certificates.



riba  
product  
selector

**TESTED**  
according to  
**BS6180**



Quick and simple mounting

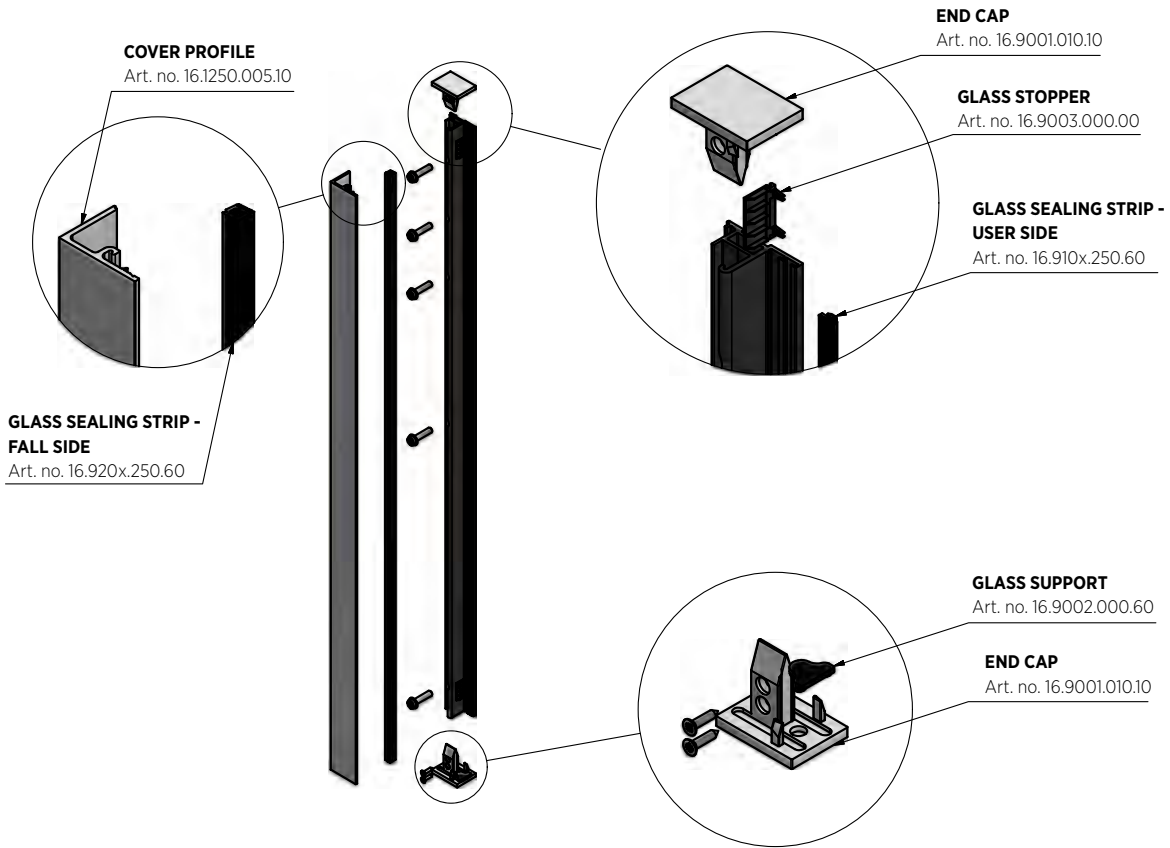
Different finishes



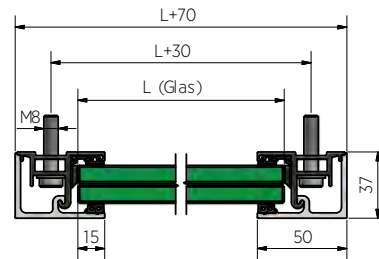
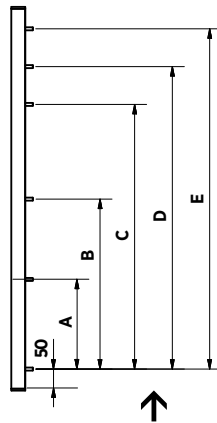
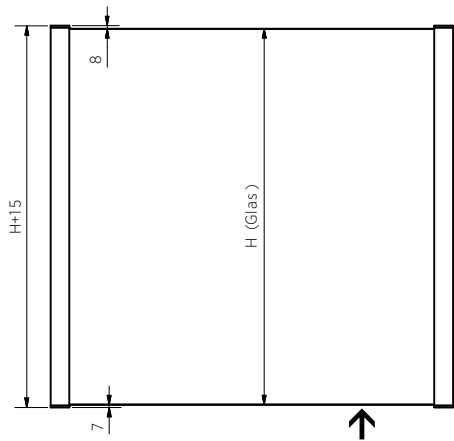
Available for different glass thicknesses, pre-assembled as set

The coolest of all names

# SKYFORCE TOP MOUNT



## Glass Dimensions Skyforce Top Mounting



Glas Height (H)	900 mm	1000 mm	1100 mm	1200 mm
A	133 mm	200 mm	233 mm	267 mm
B	266 mm	400 mm	466 mm	533 mm
C	600 mm	700 mm	800 mm	900 mm
D	700 mm	800 mm	900 mm	1000 mm
E	800 mm	900 mm	1000 mm	1100 mm

# SKYFORCE | EXTERIOR MOUNT | PRE-SIZED FINISHED KITS

## Surface finish code for your Skyforce order

- .10 Aluminium, mill finish
- .11 Aluminium, anodised
- .13 RAL glossy (minimum order quantity 5 units)
- .16 RAL structured matt (minimum order quantity 5 units)
- .18 RAL matt (minimum order quantity 5 units)
- .16sb RAL structured matt in Stealth Black colour (minimum order quantity 5 units)

Example: You order your 16.1009.010.**16** profile and receive it with “structured matt” surface finish and a colour of your choice. If you’d like to learn more about our colour structures, you can order one of our colour charts – Art. No.: 85.7003.001.00 at [info@onlevel.com](mailto:info@onlevel.com).

## Juliet balcony, 2-part complete set

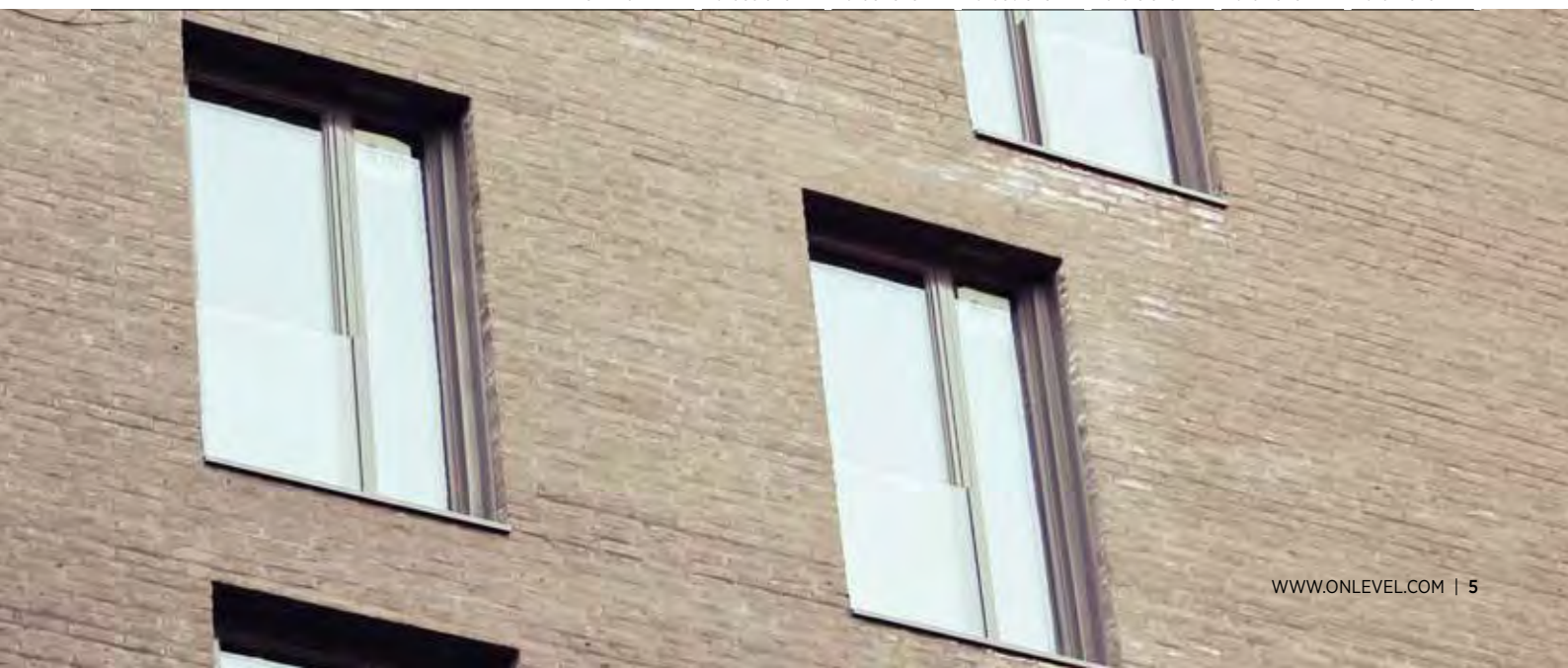


Height	500 mm	700 mm	900 mm	1000 mm	1100 mm	1200 mm
Rubber set for	Art. no.	Art. no.	Art. no.	Art. no.	Art. no.	Art. no.
10 - 11 mm	16.1005.010.xx	16.1007.010.xx	16.1009.010.xx	16.1010.010.xx	16.1011.010.xx	16.1012.010.xx
12 - 13.5 mm	16.1005.012.xx	16.1007.012.xx	16.1009.012.xx	16.1010.012.xx	16.1011.012.xx	16.1012.012.xx
15 mm	16.1005.015.xx	16.1007.015.xx	16.1009.015.xx	16.1010.015.xx	16.1011.015.xx	16.1012.015.xx
16 - 17,5 mm	16.1005.016.xx	16.1007.016.xx	16.1009.016.xx	16.1010.016.xx	16.1011.016.xx	16.1012.016.xx
19 mm	16.1005.019.xx	16.1007.019.xx	16.1009.019.xx	16.1010.019.xx	16.1011.019.xx	16.1012.019.xx
20 - 21.5 mm	16.1005.020.xx	16.1007.020.xx	16.1009.020.xx	16.1010.020.xx	16.1011.020.xx	16.1012.020.xx

## Juliet balcony, centrepiece



Height	500 mm	700 mm	900 mm	1000 mm	1100 mm	1200 mm
Rubber set for	Art. no.	Art. no.	Art. no.	Art. no.	Art. no.	Art. no.
10 - 11 mm	16.1505.010.xx	16.1507.010.xx	16.1509.010.xx	16.1510.010.xx	16.1511.010.xx	16.1512.010.xx
12 - 13.5 mm	16.1505.012.xx	16.1507.012.xx	16.1509.012.xx	16.1510.012.xx	16.1511.012.xx	16.1512.012.xx
15 mm	16.1505.015.xx	16.1507.015.xx	16.1509.015.xx	16.1510.015.xx	16.1511.015.xx	16.1512.015.xx
16 - 17,5 mm	16.1505.016.xx	16.1507.016.xx	16.1509.016.xx	16.1510.016.xx	16.1511.016.xx	16.1512.016.xx
19 mm	16.1505.019.xx	16.1507.019.xx	16.1509.019.xx	16.1510.019.xx	16.1511.019.xx	16.1512.019.xx
20 - 21.5 mm	16.1505.020.xx	16.1507.020.xx	16.1509.020.xx	16.1510.020.xx	16.1511.020.xx	16.1512.020.xx



# SKYFORCE TOP | EXTERIOR MOUNT | COMPONENTS

---

## Juliet balcony, screw-on profile, left and right



| Sales unit: 1 piece

Model SF	Aluminium black
Length	Art. no.
5000	16.1150.005.15

---

## Juliet balcony, cover profile, left and right



| Sales unit: 1 piece

Model SF	Mill finish	Coloured
Length	Art. no.	Art. no.
5000	16.1250.005.10	16.1250.005.13/16/18

---

## Juliet balcony, end cap, left and right



| Fixing screw 91.1140.419.30  
| Sales unit: 4 pieces

Model SF	Mill finish	Plain aluminium	Coloured
	Art. no.	Art. no.	Art. no.
	16.9001.010.10	16.9001.010.11	16.9001.010.13/16/18

---

# SKY**FORCE** TOP | EXTERIOR MOUNT | COMPONENTS

---

## Juliet balcony, screw-on profile, centre



| Sales unit: 1 piece

Model SF	Aluminium black
Length	Art. no.
5000	16.1650.005.15

## Juliet balcony, cover profile, centre



| Sales unit: 1 piece

Model SF	Mill finish	Coloured
Length	Art. no.	Art. no.
5000	16.1750.005.10	16.1750.005.13/16/18

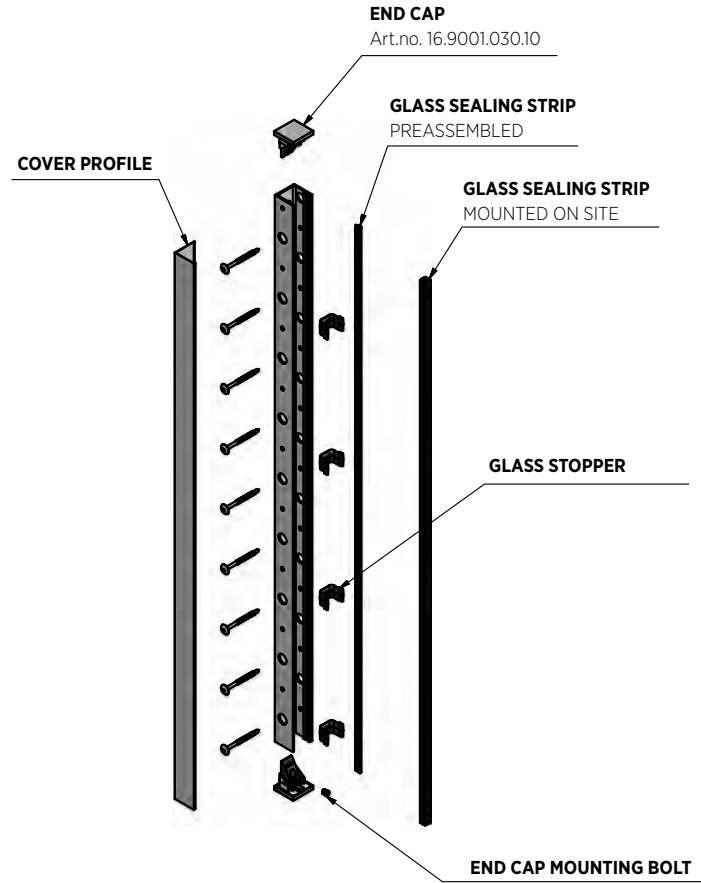
## Juliet balcony, end cap, centre



| Fixing screw 91.1140.419.30  
| Sales unit: 2 pieces

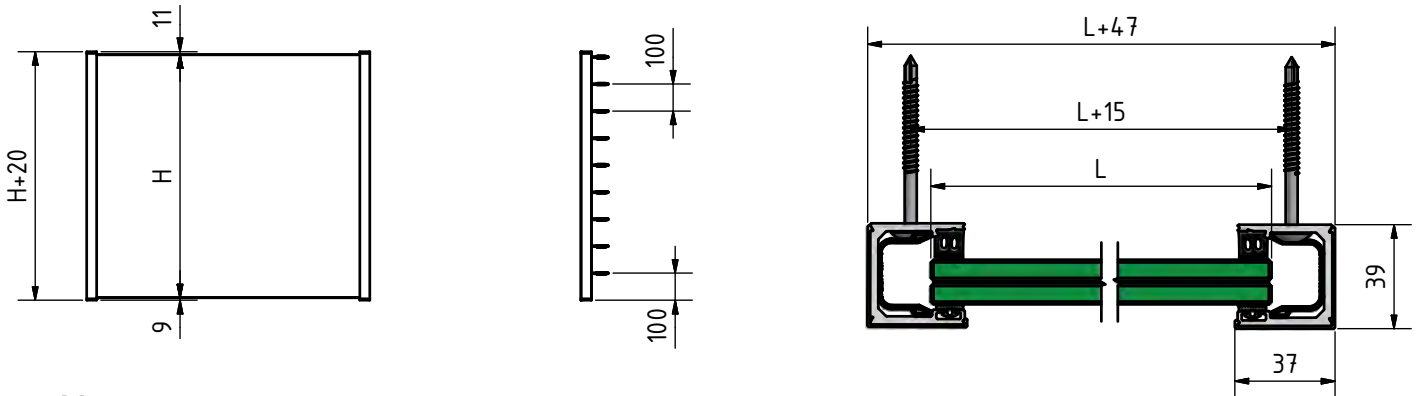
Model SF	Mill finish	Plain aluminium	Coloured
	Art. no.	Art. no.	Art. no.
	16.9001.015.10	16.9001.015.11	16.9001.015.13/16/18

# SKYFORCE SLIM TOP MOUNT

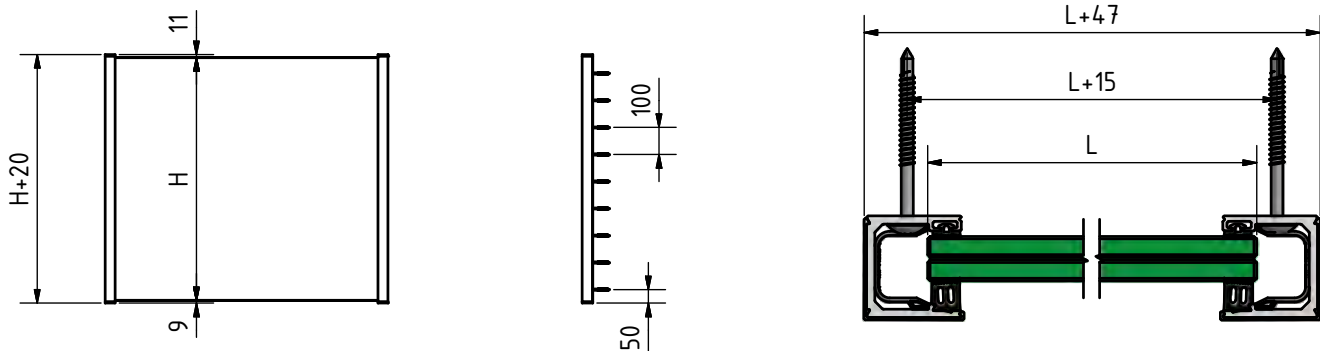


## Glass Dimensions Skyforce Slim Mounting

### Inside Mount



### Outside Mount





# SKYFORCE SLIM PRE-SIZED FINISHED KITS

## Surface finish code for your Skyforce order

- .10 Aluminium, mill finish
- .11 Aluminium, anodised
- .13 RAL glossy (minimum order quantity 5 units)
- .16 RAL structured matt (minimum order quantity 5 units)
- .18 RAL matt (minimum order quantity 5 units)
- .16sb RAL structured matt in Stealth Black colour (minimum order quantity 5 units)

Example: You order your 16.1009.010.**16** profile and receive it with “structured matt” surface finish and a colour of your choice. If you’d like to learn more about our colour structures, you can order one of our colour charts – Art. No.: 85.7003.001.00 at [info@onlevel.com](mailto:info@onlevel.com).

## Juliet balcony, 2-part complete set



- | SKYFORCE Slim now with a reduced width from 50 mm to 37 mm, which makes “Slim” especially suitable for narrow window frames
- | Glass mounting can optionally be done either from outside or from inside
- | Heights of 700, 900 and 1200 mm available in stock

Height	500 mm	700 mm	900 mm	1000 mm	1100 mm	1200 mm
Rubber set for	Art. no.	Art. no.	Art. no.	Art. no.	Art. no.	Art. no.
10 - 11 mm	16.3005.010.xx	16.3007.010.xx	16.3009.010.xx	16.3010.010.xx	16.3011.010.xx	16.3012.010.xx
12 - 13.5 mm	16.3005.012.xx	16.3007.012.xx	16.3009.012.xx	16.3010.012.xx	16.3011.012.xx	16.3012.012.xx
15 mm	16.3005.015.xx	16.3007.015.xx	16.3009.015.xx	16.3010.015.xx	16.3011.015.xx	16.3012.015.xx
16 - 17,5 mm	16.3005.016.xx	16.3007.016.xx	16.3009.016.xx	16.3010.016.xx	16.3011.016.xx	16.3012.016.xx
19 mm	16.3005.019.xx	16.3007.019.xx	16.3009.019.xx	16.3010.019.xx	16.3011.019.xx	16.3012.019.xx
20 - 21.5 mm	16.3005.020.xx	16.3007.020.xx	16.3009.020.xx	16.3010.020.xx	16.3011.020.xx	16.3012.020.xx

# SKYFORCE SLIM | COMPONENTS

---

## Juliet balcony, glass stopper

| Sales unit: 50 pieces



Modell SF	Plastic
	Art. no.
	16.9003.030.00

---

## Juliet balcony, end cap, left and right

| Sales unit: 4 pieces



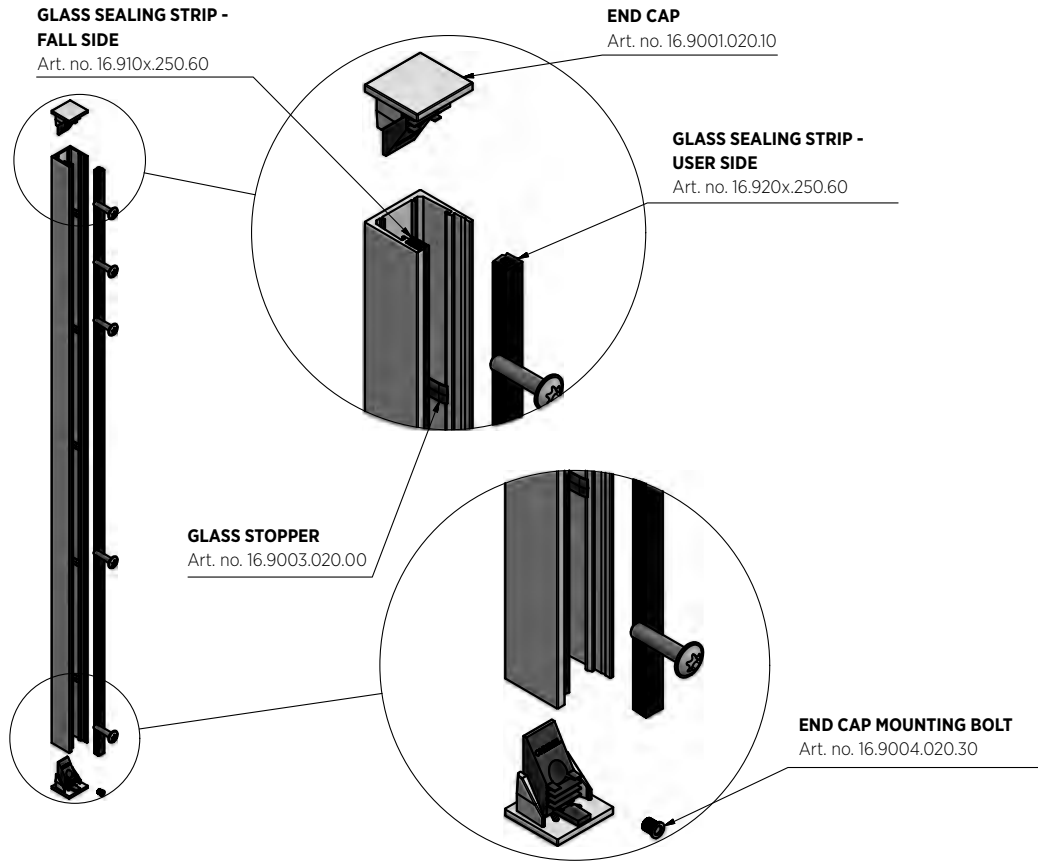
Model SF	Mill finish	Plain aluminium	Coloured
	Art. no.	Art. no.	Art. no.
	16.9001.030.10	16.9001.030.11	16.9001.030.13/16/18

---

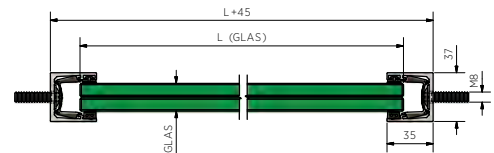
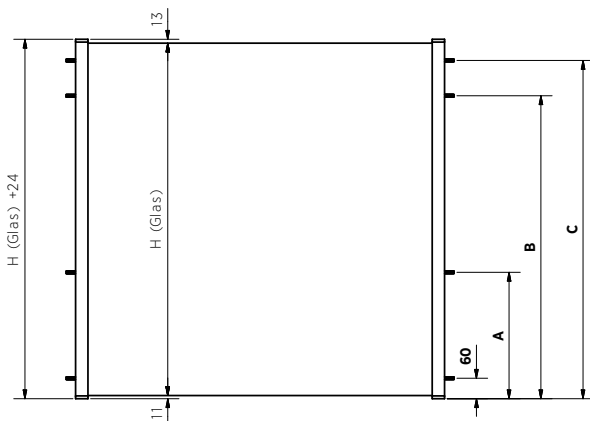
WATCH THE SKY**FORCE**  
MOUNTING VIDEO ONLINE!



# SKYFORCE SIDE | REVEAL MOUNT



## Glass Dimensions Skyforce Reveal Mounting



Height (H)	900 mm	1000 mm	1100 mm	1200 mm
A	410	460	510	560
B	760	860	960	1060
C	860	860	1060	1160

# SKYFORCE SIDE | EXTERIOR MOUNT | PRE-SIZED FINISHED KITS

## Surface finish code for your Skyforce order

- .10 Aluminium, mill finish
- .11 Aluminium, anodised
- .13 RAL glossy (minimum order quantity 5 units)
- .16 RAL structured matt (minimum order quantity 5 units)
- .18 RAL matt (minimum order quantity 5 units)
- .16sb RAL structured matt in Stealth Black colour (minimum order quantity 5 units)

Example: You order your 16.1009.010.**16** profile and receive it with “structured matt” surface finish and a colour of your choice. If you’d like to learn more about our colour structures, you can order one of our colour charts – Art. No.: 85.7003.001.00 at [info@onlevel.com](mailto:info@onlevel.com).

## Juliet balcony, 2-part complete set, Reveal Mounting



Height	500 mm	700 mm	900 mm	1000 mm	1100 mm	1200 mm
Rubber set for	Art. no.	Art. no.	Art. no.	Art. no.	Art. no.	Art. no.
10 - 11 mm	16.2005.010.10	16.2007.010.10	16.2009.010.10	16.2010.010.10	16.2011.010.10	16.2012.010.10
12 - 13.5 mm	16.2005.012.10	16.2007.012.10	16.2009.012.10	16.2010.012.10	16.2011.012.10	16.2012.012.10
15 mm	16.2005.015.10	16.2007.015.10	16.2009.015.10	16.2010.015.10	16.2011.015.10	16.2012.015.10
16 - 17,5 mm	16.2005.016.10	16.2007.016.10	16.2009.016.10	16.2010.016.10	16.2011.016.10	16.2012.016.10
19 mm	16.2005.019.10	16.2007.019.10	16.2009.019.10	16.2010.019.10	16.2011.019.10	16.2012.019.10
20 - 21.5 mm	16.2005.020.10	16.2007.020.10	16.2009.020.10	16.2010.020.10	16.2011.020.10	16.2012.020.10



# SKYFORCE SIDE | EXTERIOR MOUNT | COMPONENTS

---

## Juliet balcony, screw-on profile, left and right, Reveal Mounting



| Sales unit: 1 piece

Model SF	Mill finish	Plain aluminium	Coloured
Length	Art. no.	Art. no.	Art. no.
5000	16.2150.005.10	16.2150.005.11	16.2150.005.13/16/18

---

## Juliet balcony, Endcap, left and right, Reveal Mounting

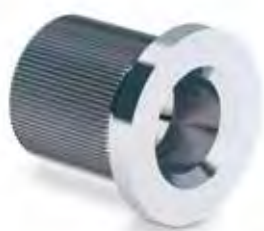


| Sales unit: 4 pieces

Model SF	Mill finish	Plain aluminium	Coloured
	Art. no.	Art. no.	Art. no.
	16.9001.020.10	16.9001.020.11	16.9001.020.13/16/18

---

## Juliet balcony, Encap Mounting Bolt



| Sales unit: 10 pieces

Model SF	V4A
	Art. no.
	16.9004.020.30

---

# SKYFORCE SOUND SHIELD

## Surface finish code for your Skyforce order

- .10 Aluminium, mill finish
- .11 Aluminium, anodised
- .13 RAL glossy (minimum order quantity 5 units)
- .16 RAL structured matt (minimum order quantity 5 units)
- .18 RAL matt (minimum order quantity 5 units)
- .16sb RAL structured matt in Stealth Black colour (minimum order quantity 5 units)

Example: You order your 16.1009.010.**16** profile and receive it with “structured matt” surface finish and a colour of your choice. If you’d like to learn more about our colour structures, you can order one of our colour charts – Art. No.: 85.7003.001.00 at [info@onlevel.com](mailto:info@onlevel.com).

## Juliet balcony, 2-part complete set, sound insulation



| F\*\*\*, what a noise! Luckily, there is Soundshield by **ONLEVEL**. Simply mount it in front of your window and enjoy heavenly quiet.

### SKYFORCE TOP

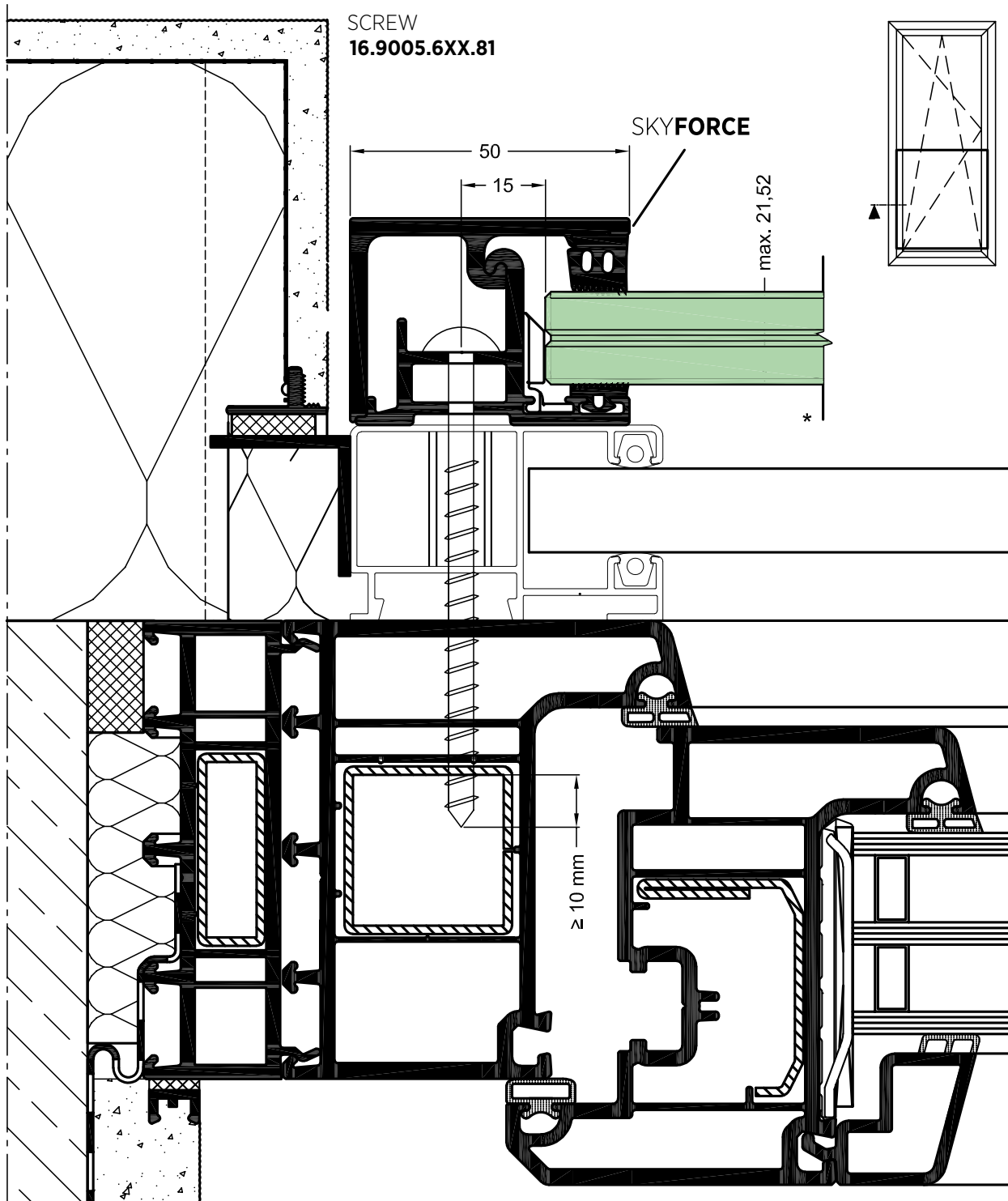
Height	2000 mm	2500 mm	3000 mm
Rubber set for	Art. no.	Art. no.	Art. no.
10 - 11 mm	16.1020.010.xx	16.1025.010.xx	16.1030.010.xx
12 - 13.5 mm	16.1020.012.xx	16.1025.012.xx	16.1030.012.xx
15 mm	16.1020.015.xx	16.1025.015.xx	16.1030.015.xx
16 - 17,5 mm	16.1020.016.xx	16.1025.016.xx	16.1030.016.xx
19 mm	16.1020.019.xx	16.1025.019.xx	16.1030.019.xx
20 - 21.5 mm	16.1020.020.xx	16.1025.020.xx	16.1030.020.xx

### SKYFORCE SIDE

Height	2000 mm	2500 mm	3000 mm
Rubber set for	Art. no.	Art. no.	Art. no.
10 - 11 mm	16.2020.010.xx	16.2025.010.xx	16.2030.010.xx
12 - 13.5 mm	16.2020.012.xx	16.2025.012.xx	16.2030.012.xx
15 mm	16.2020.015.xx	16.2025.015.xx	16.2030.015.xx
16 - 17,5 mm	16.2020.016.xx	16.2025.016.xx	16.2030.016.xx
19 mm	16.2020.019.xx	16.2025.019.xx	16.2030.019.xx
20 - 21.5 mm	16.2020.020.xx	16.2025.020.xx	16.2030.020.xx

# SKYFORCE | INSTALLATION EXAMPLE

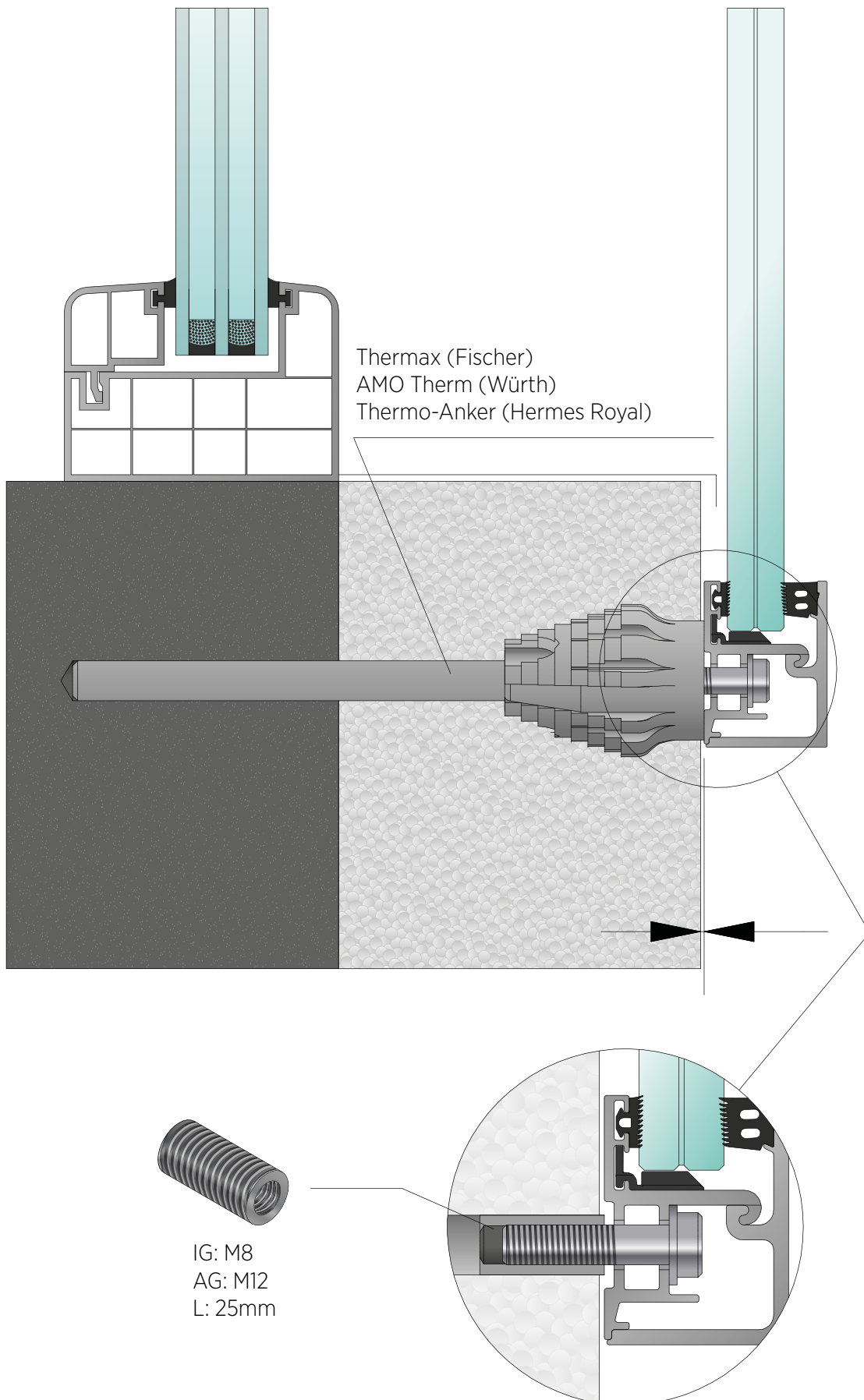
## Skyforce - Shutter Guide Profile Installation Example





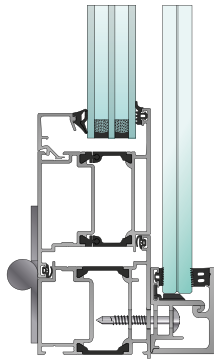
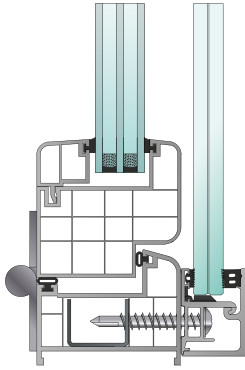
# SKYFORCE | INSTALLATION EXAMPLE

## Skyforce - Thermal Insulation Installation Example

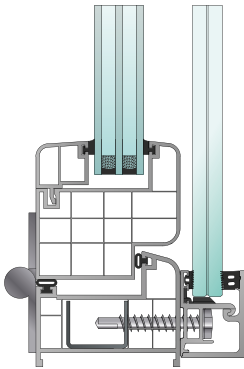


## Application overview TOP Mount

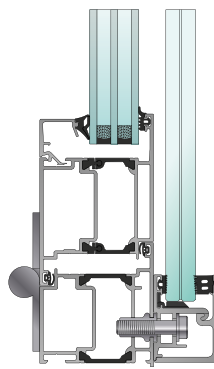
aluminium & plastic frames  
selfdrilling screw



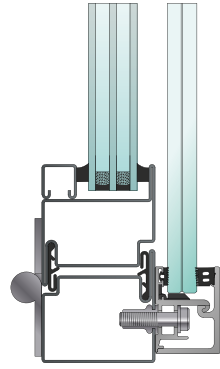
aluminium & plastic frames  
stainless steel screw



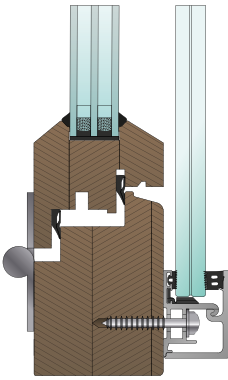
aluminium frames



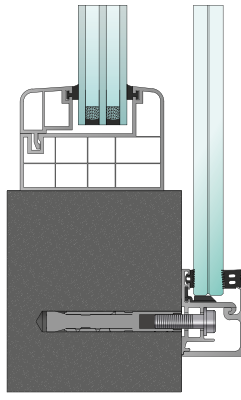
steel frames



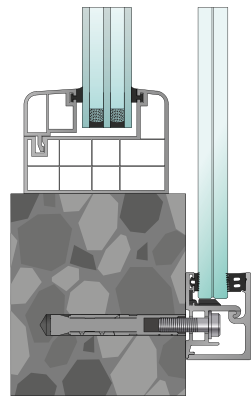
wooden frames



concrete frames

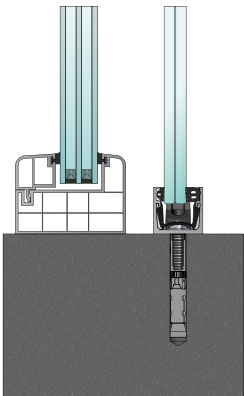


stone frames

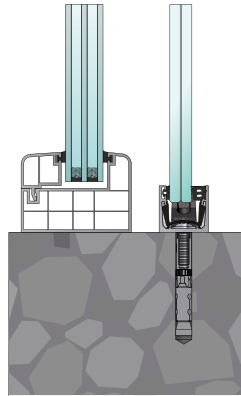


## Application overview SIDE Mount

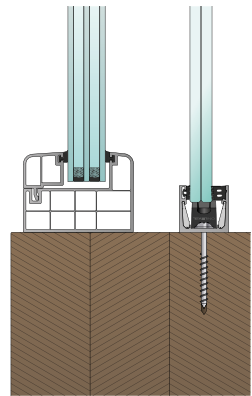
concrete frames



stone frames



wooden frames



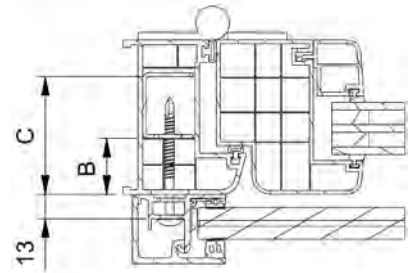
# SKYFORCE | FIXING ANCHOR

## Fixing screw, self-tapping for plastic frames with steel core & aluminium frame, top mount

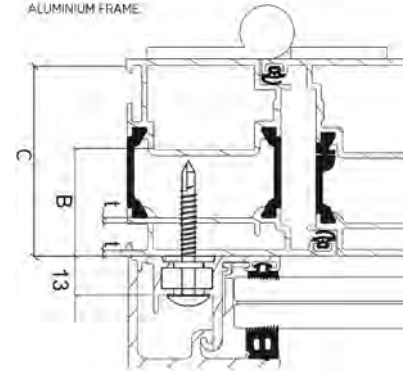


- | Plastic frame: The screw needs a 1.5 mm steel core in the frame profile.
- | Aluminium frame: The screw needs two walls with "t" total  $\geq 3.2$  mm
- | Aluminium frame: Screw length max. 45 mm
- | Sales unit: 12 pieces

PLASTIC FRAME:



ALUMINIUM FRAME:



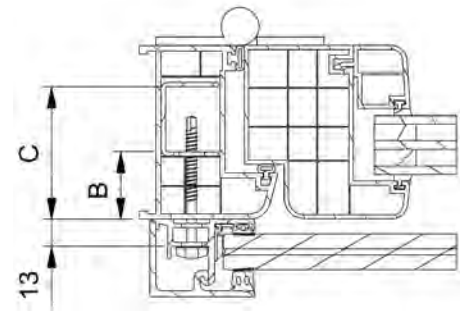
Model 9005		Zinc-plated steel	
Length	B	C (min.)	Art. no.
45 mm	0 - 14 mm	35 mm	16.9005.604.81
55 mm	15 - 24 mm	45 mm	16.9005.605.81
65 mm	25 - 34 mm	55 mm	16.9005.606.81
75 mm	35 - 44 mm	65 mm	16.9005.607.81
85 mm	45 - 54 mm	75 mm	16.9005.608.81
95 mm	55 - 64 mm	85 mm	16.9005.609.81
105 mm	65 - 74 mm	95 mm	16.9005.610.81
125 mm	75 - 94 mm	115 mm	16.9005.612.81
150 mm	95 - 120 mm	140 mm	16.9005.615.81

Refer to the test report for the number of fixings.

## Stainless steel fixing screw for plastic frames with steel core & aluminium frame, top mount



- |  $\varnothing 6.3$
- | The anchors are not self-tapping and must be pre-drilled
- | Aluminium frame: Screw length max. 50 - 82 mm
- | Finish exterior application: V4A (outside)
- | Sales unit: 12 pieces



Model 9005		V4A (outside)	
Length	B	Art. no.	
50 mm	0 - 25 mm	16.9012.605.20	
64 mm	25 - 40 mm	16.9012.606.20	
75 mm	40 - 50 mm	16.9012.607.20	
82 mm	50 - 55 mm	16.9012.608.20	
92 mm	55 - 65 mm	16.9012.609.20	
102 mm	65 - 75 mm	16.9012.610.20	
115 mm	75 - 90 mm	16.9012.611.20	

# SKYFORCE | FIXING ANCHOR

---

## Fixing anchor for aluminium frames, Top Mount

| Finish exterior application: V4A (exterior)  
| Sales unit: 10 pieces



<b>Model 9006</b>	<b>V4A (exterior)</b>
Art. no.	
16.9006.835.30	

---

## Fixing anchor for steel frames, Top Mount

| Finish exterior application: V4A (exterior)  
| Sales unit: 10 pieces



<b>Model 9008</b>	<b>V4A (exterior)</b>
Art. no.	
16.9008.835.30	

---

## Fixing anchor for concrete frames, Top Mount

| Finish exterior application: V4A (exterior)  
| Sales unit: 10 pieces



<b>Model 9009</b>	<b>V4A (exterior)</b>
Art. no.	
16.9009.835.30	

---

## Fixing anchor for stone frames, Top Mount

| Finish exterior application: V4A (exterior)  
| Sales unit: 10 pieces



<b>Model 9010</b>	<b>V4A (exterior)</b>
Art. no.	
16.9010.835.30	

---

# SKYFORCE | FIXING ANCHOR

---

## Fixing anchor for wooden frames, Top and Side Mount



| Finish exterior application: V4A (exterior)  
| Ø 6 x 60 mm  
| Sales unit: 10 pieces

<b>Model 9007</b>	<b>V4A (exterior)</b>
Art. no.	
16.9007.660.30	

---

## Fixing anchor for aluminium and steel frames, Side Mount



| Finish exterior application: V4A (exterior)  
| Sales unit: 10 pieces

<b>Model 1190</b>	<b>V4A (exterior)</b>
Art. no.	
91.1190.812.30	

---

## Fixing anchor for concrete frames, Side Mount



| Finish exterior application: V4A (exterior)  
| Sales unit: 10 pieces

<b>Model 9029</b>	<b>V4A (exterior)</b>
Art. no.	
16.9029.835.30	

---

## Fixing anchor for stone frames, Side Mount

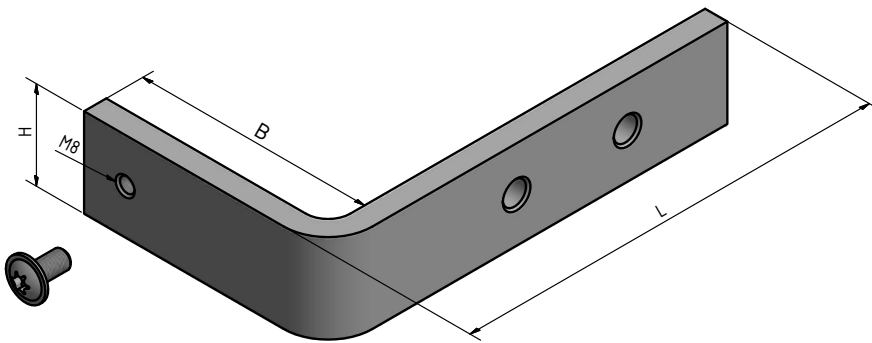
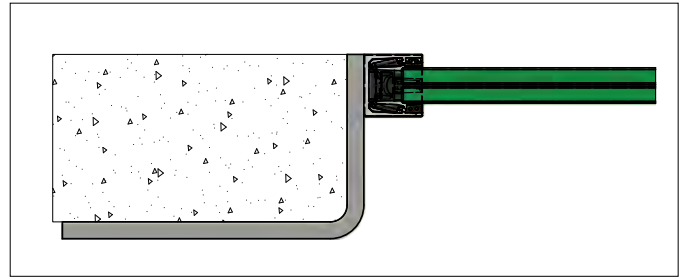
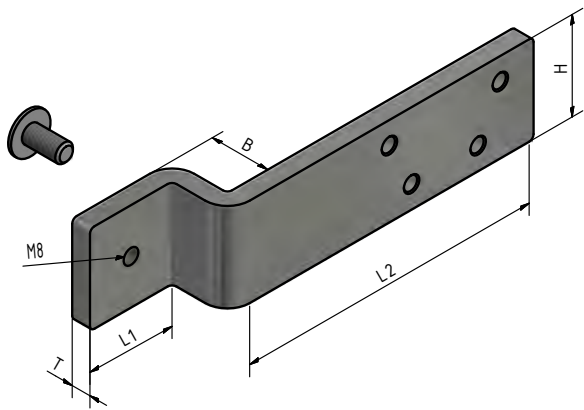


| Finish exterior application: V4A (exterior)  
| Sales unit: 10 pieces

<b>Model 9020</b>	<b>V4A (exterior)</b>
Art. no.	
16.9020.835.30	

---

## Skyforce Side - Aluminium and Steel Installation Example



## Distance Sleeve for Fixing Anchor



- | Diameter: 16 mm
- | Aluminium
- | Sales unit: 10 pieces

Model 9320	black anodised	Coloured
Length	Art. no.	Art. no.
10.5 mm	16.9320.010.15	16.9320.010.13/16/18
16 mm	16.9320.016.15	16.9320.016.13/16/18
20.5 mm	16.9320.020.15	16.9320.020.13/16/18

## Assembly tool Skyforce



- | Mounting aid for rubber seal
- | Sales unit: 1 piece

Model 0100	
Art. no.	
	90.0100.105.00

## Boor Stopper Skyforce



| For drill diameters Ø 4 - 10 mm  
| Sales unit: 1 piece

<b>Model 0100</b>	
Art. no.	
<hr/>	
90.0100.106.00	

## Rivet Tool Skyforce



| Lever riveting tools for Skyforce blind rivets  
| Sales unit: 1 piece

<b>Model 0100</b>	
Art. no.	
<hr/>	
90.0100.140.00	

## Mounting block Skyforce



| M8  
| Zinc  
| Sales unit: 12 pieces

<b>Model 9035</b>	<b>white</b>	<b>black</b>
Art. no.	Art. no.	Art. no.
<hr/>		
16.9035.000.91	16.9035.000.92	

## Edge protection, self-adhesive, V4A brushed



| Height 6 mm  
| Thickness 1 mm  
| Compatible with PVB films  
| Sales unit: 1 piece

Model 2111		1000 mm	1500 mm	2000 mm	3000 mm	4000 mm
Width	for glass thickness	Art. no.	Art. no.	Art. no.	Art. no.	Art. no.
14	10,76 - 11,52 mm	12.2111.141.31	12.2110.141.31	12.2112.141.31	12.2113.141.31	12.2114.141.31
16	12,76 - 13,52 mm	12.2111.161.31	12.2110.161.31	12.2112.161.31	12.2113.161.31	12.2114.161.31
20	16,76 - 17,52 mm	12.2111.201.31	12.2110.201.31	12.2112.201.31	12.2113.201.31	12.2114.201.31
24	20,76 - 21,52 mm	12.2111.241.31	12.2110.241.31	12.2112.241.31	12.2113.241.31	12.2114.241.31
28	25 - 25,52 mm	12.2111.281.31	12.2110.281.31	12.2112.281.31	12.2113.281.31	12.2114.281.31

## Edge protection, self-adhesive, aluminium plain



| Height 7 mm  
| Thickness 1 mm  
| Compatible with PVB films  
| Sales unit: 1 piece

Model 2111		1000 mm	1500 mm	2000 mm	3000 mm	4000 mm
Width	for glass thickness	Art. no.	Art. no.	Art. no.	Art. no.	Art. no.
14	10,76 - 11,52 mm	11.2111.141.10	11.2110.141.10	11.2112.141.10	11.2113.141.10	11.2114.141.10
16	12,76 - 13,52 mm	11.2111.161.10	11.2110.161.10	11.2112.161.10	11.2113.161.10	11.2114.161.10
20	16,76 - 17,52 mm	11.2111.201.10	11.2110.201.10	11.2112.201.10	11.2113.201.10	11.2114.201.10
24	20,76 - 21,52 mm	11.2111.241.10	11.2110.241.10	11.2112.241.10	11.2113.241.10	11.2114.241.10
28	25 - 25,52 mm	11.2111.281.10	11.2110.281.10	11.2112.281.10	11.2113.281.10	11.2114.281.10

## Edge protection, self-adhesive, aluminium mill finish



| Height 7 mm  
| Thickness 1 mm  
| Compatible with PVB films  
| Sales unit: 1 piece

Model 2111		1000 mm	1500 mm	2000 mm	3000 mm	4000 mm
Width	for glass thickness	Art. no.	Art. no.	Art. no.	Art. no.	Art. no.
14	10,76 - 11,52 mm	11.2111.141.11	11.2110.141.11	11.2112.141.11	11.2113.141.11	11.2114.141.11
16	12,76 - 13,52 mm	11.2111.161.11	11.2110.161.11	11.2112.161.11	11.2113.161.11	11.2114.161.11
20	16,76 - 17,52 mm	11.2111.201.11	11.2110.201.11	11.2112.201.11	11.2113.201.11	11.2114.201.11
24	20,76 - 21,52 mm	11.2111.241.11	11.2110.241.11	11.2112.241.11	11.2113.241.11	11.2114.241.11
28	25 - 25,52 mm	11.2111.281.11	11.2110.281.11	11.2112.281.11	11.2113.281.11	11.2114.281.11

## Edge protection, self-adhesive, aluminium RAL



| Height 7 mm  
| Thickness 1 mm  
| Compatible with PVB films  
| Sales unit: 1 piece, Minimum order quantity 5 units

Model 2111		1000 mm	1500 mm	2000 mm	3000 mm	4000 mm
Width	for glass thickness	Art. no.	Art. no.	Art. no.	Art. no.	Art. no.
14	10,76 - 11,52 mm	11.2111.141.xx	11.2110.141.xx	11.2112.141.xx	11.2113.141.xx	11.2114.141.xx
16	12,76 - 13,52 mm	11.2111.161.xx	11.2110.161.xx	11.2112.161.xx	11.2113.161.xx	11.2114.161.xx
20	16,76 - 17,52 mm	11.2111.201.xx	11.2110.201.xx	11.2112.201.xx	11.2113.201.xx	11.2114.201.xx
24	20,76 - 21,52 mm	11.2111.241.xx	11.2110.241.xx	11.2112.241.xx	11.2113.241.xx	11.2114.241.xx
28	25 - 25,52 mm	11.2111.281.xx	11.2110.281.xx	11.2112.281.xx	11.2113.281.xx	11.2114.281.xx



## 90° Edge protection, self-adhesive



| Height 7 mm  
| Thickness 1 mm  
| Compatible with PVB films  
| Sales unit: 1 piece

Model 2110		Mill finish	Plain aluminium	RAL Coloured
Width	for glass thickness	Art. no.	Art. no.	Art. no.
14	10,76 - 11,52 mm	11.2210.141.10	11.2210.141.11	11.2210.141.13/16/18
16	12,76 - 13,52 mm	11.2210.161.10	11.2210.161.11	11.2210.161.13/16/18
20	16,76 - 17,52 mm	11.2210.201.10	11.2210.201.11	11.2210.201.13/16/18
24	20,76 - 21,52 mm	11.2210.241.10	11.2210.241.11	11.2210.241.13/16/18
28	24 - 25,52 mm	11.2210.281.10	11.2210.281.11	11.2210.281.13/16/18

## Connector Edge protection, self-adhesive



| Height 7 mm  
| Length 30 mm  
| Compatible with PVB films  
| Sales unit: 1 piece

Model 2200		Mill finish	Plain aluminium	RAL Coloured	V4A
Width	for glass thickness	Art. no.	Art. no.	Art. no.	Art. no.
16	10,76 - 11,52 mm	11.2200.141.10	11.2200.141.11	11.2200.141.13/16/18	12.2200.141.31
18	12,76 - 13,52 mm	11.2200.161.10	11.2200.161.11	11.2200.161.13/16/18	12.2200.161.31
22	16,76 - 17,52 mm	11.2200.201.10	11.2200.201.11	11.2200.201.13/16/18	12.2200.201.31
26	20,76 - 21,52 mm	11.2200.241.10	11.2200.241.11	11.2200.241.13/16/18	12.2200.241.31
30	24 - 25,52 mm	11.2200.281.10	11.2200.281.11	11.2200.281.13/16/18	12.2200.281.31

## Juliet balcony, glass supports, Top Mount



| Accessorie for Top Mount  
| Sales unit: 50 pieces

Model 9002	Plastic
Art. no.	
16.9002.000.60	

## Juliet balcony, glass stopper, Top Mount



| Accessorie for Top Mount  
| Sales unit: 100 pieces

Model 9003	Plastic
Art. no.	
16.9003.000.00	

## Juliet balcony, glass stopper, Side Mount



| Accessorie for Side Mount  
| Sales unit: 50 pieces

Model 9003	Plastic
Art. no.	
	16.9003.000.00

---

## Glass sealing strip, Top and Side Mount



| For glass thickness 10 - 15 mm  
| Sales unit: 81 pieces

Model 9102	Plastic
Length	Art. no.
25 mtr	16.9102.250.60

---

## Glass sealing strip, Top and Side Mount



| For glass thickness 16 - 21,5 mm  
| Sales unit: 1 pieces

Model 9101	Plastic
Length	Art. no.
25 mtr	16.9101.250.60

---

## Glass sealing strip, Top and Side Mount



| For glass thickness 10 / 10,76 mm / 11,52 mm  
| Sales unit: 1 piece

Model 9204	Plastic
Length	Art. no.
25 mtr	16.9204.250.60

---

## Glass sealing strip, Top and Side Mount

| For glass thickness 12 / 12,76 / 13,52 / 19 mm  
| Sales unit: 1 piece



Model 9202	Plastic
Length	Art. no.
25 mtr	16.9202.250.60

---

## Glass sealing strip, Top and Side Mount

| For glass thickness 16.76 / 17,52 mm  
| Sales unit: 1 piece



Model 9203	Plastic
Length	Art. no.
25 mtr	16.9203.250.60

---

## Glass sealing strip, Top and Side Mount

| For glass thickness 15 / 20,76 / 21,52 mm  
| Sales unit: 1 piece



Model 9201	Plastic
Length	Art. no.
25 mtr	16.9201.250.60

---

# ONLEVEL

8, Alexandria Court  
Ashton Commerce Park  
Ashton-under-Lyne  
Lancashire OL7 0QN  
United Kingdom

T +44 0161 804 9500  
F +44 0161 804 9505

[info@onlevel.com](mailto:info@onlevel.com)  
[www.onlevel.com](http://www.onlevel.com)