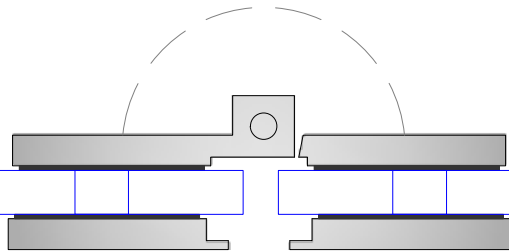
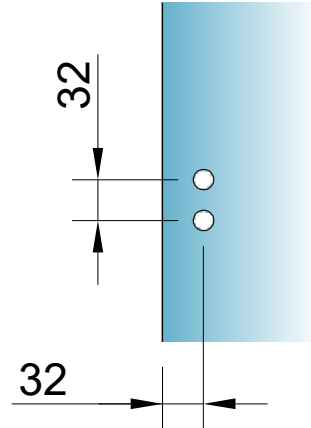
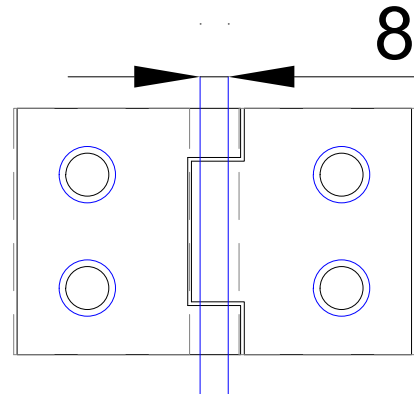
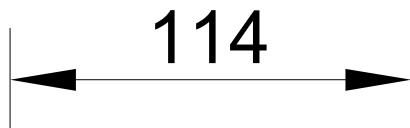
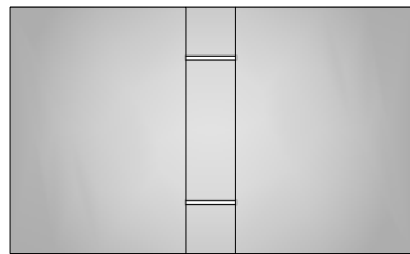


GLASS PREP
 Ø16mm HOLES



8mm GLASS TO GLASS GAP
 TYPICAL SEAL SH/GGA/S16 (_10)



Express Glass Warehouse
 51-55 Fowler Road,
 Hainault, Essex
 IG6 3UT

Tel: +44 (0)20 8500 1188
 Fax: +44 (0)20 8500 1010
 Email: info@egw.co.uk
 Website: www.egw.co.uk

Copyright (C) - October 2020, All Rights Reserved

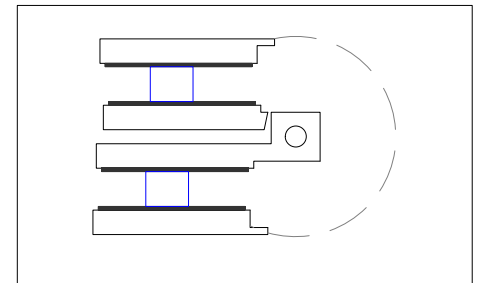
NOTES/SPECIFICATION:

ALL VISIBLE COMPONENTS IN CHROME PLATED BRASS.

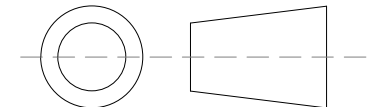
PRODUCT SUITABLE FOR 8 TO 10mm TOUGHENED GLASS PANES.

HINGE SUPPLIED COMPLETE WITH COVERS AND GLAZING GASKETS.

(NOTE CUSTOMER TO PROVIDE ALTERNATIVE FIXINGS WHERE REQUIRED)



3rd Angle Projection



PRODUCT REF:	SH/NKE/5202
DESCRIPTION:	DIMENSIONED ELEVATIONS AND GLASS PREP DETAILS
DRAWING REF:	SH/NKE/5202