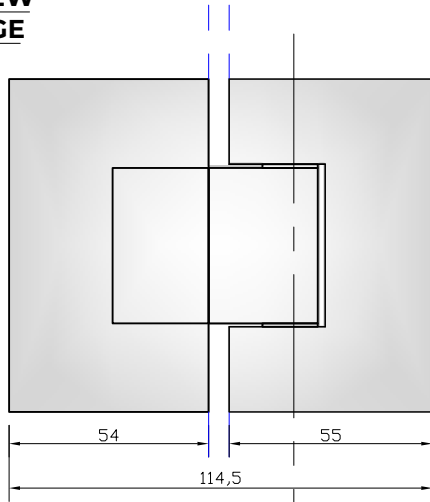
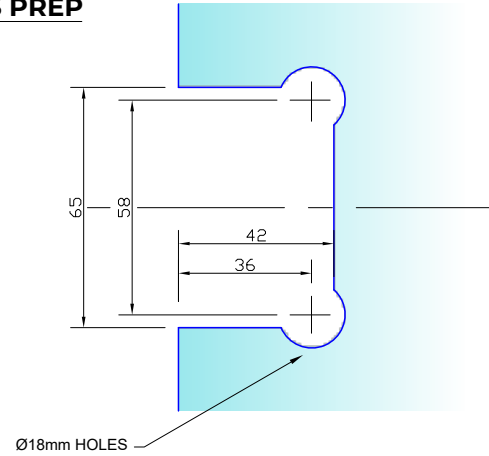


**REAR VIEW  
ON HINGE**



**REQUIRED  
GLASS PREP**

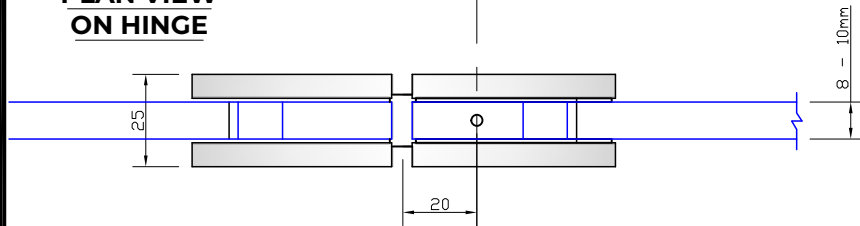


**Express Glass Warehouse**  
51-55 Fowler Road,  
Hainault, Essex  
IG6 3UT

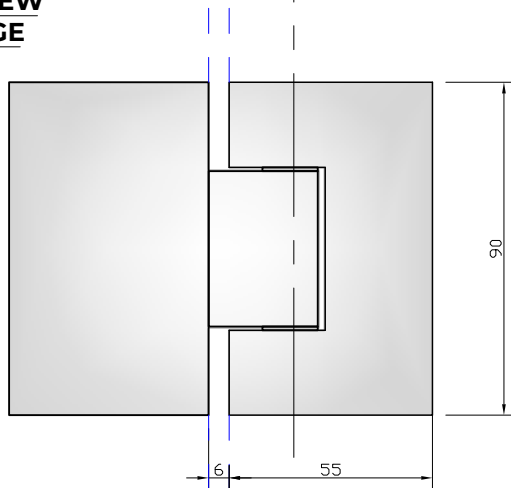
Tel: +44 (0)20 8500 1188  
Fax: +44 (0)20 8500 1010  
Email: info@egw.co.uk  
Website: www.egw.co.uk

Copyright (C) - October 2020, All Rights Reserved

**PLAN VIEW  
ON HINGE**

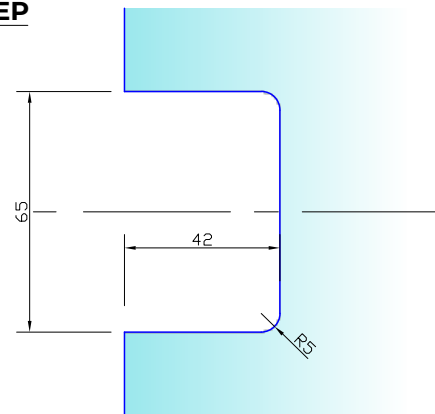


**FRONT VIEW  
ON HINGE**



(6mm GLASS REDUCTION REQ.)

**ALTERNATIVE  
GLASS PREP**



**NOTES/SPECIFICATION:**

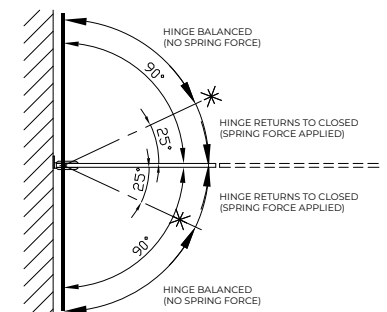
ALL VISIBLE COMPONENTS IN CHROME PLATED BRASS.

PRODUCT SUITABLE FOR 8 TO 10mm TOUGHENED GLASS PANES.

HINGE SUPPLIED COMPLETE WITH:-

- 1) 4 No. x 1.9mm TRANSLUCENT RUBBER GLAZING WASHERS.
- 2) 4 No. x 1.0mm TRANSLUCENT RUBBER GLAZING WASHERS
- 3) 4 No. M6 x 14mm ST/ST HEX SOCKET HEAD CSK SETSCREWS

(NOTE CUSTOMER TO PROVIDE ALTERNATIVE FIXINGS WHERE REQUIRED)



<b>PRODUCT REF:</b>	<b>SH/NKE/H02</b>
<b>DESCRIPTION:</b>	DIMENSIONED ELEVATIONS AND GLASS PREP DETAILS
<b>DRAWING REF:</b>	<b>SH/NKE/H02 - 001</b>