



**EXPRESS GLASS WAREHOUSE**

EXPRESS CLASS WAREHOUSE

EXPRESS 24/48hr SERVICE  
IS NOW AVAILABLE

\*offer applies only on certain products





## **EXPRESS GLASS WAREHOUSE**

A one-stop shop for all your glass needs.

Whether you require glass for major commercial projects or renovating your home - we can supply a vast array of products to suit your specific needs.

As one of the largest glass processors within the UK we are able to offer solutions for all of your glass requirements.

Our commitment to customer satisfaction is our priority. We understand the importance of customer service and in accordance with our high standards deliver quality glass products within unbeatable lead times.

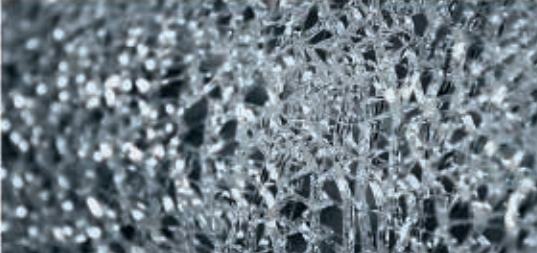
Our dedicated and knowledgeable sales team are able to find the best solutions to fulfil any brief in the most cost effective way possible. Throughout the process they are on hand to advise with technical and logistical solutions.

EXPRESS GLASS WAREHOUSE

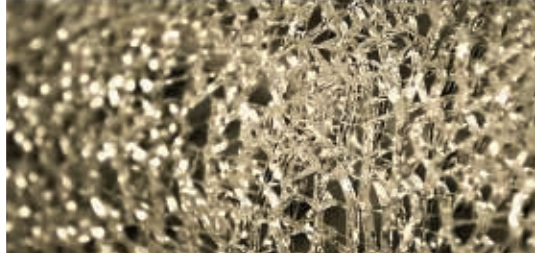
LamEX

get creative with our crackle glass range

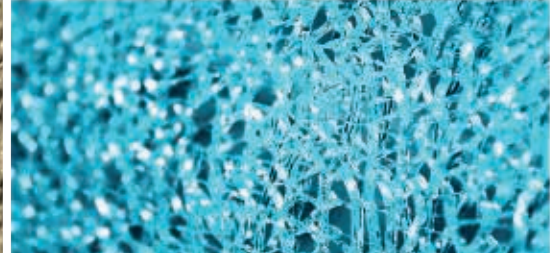




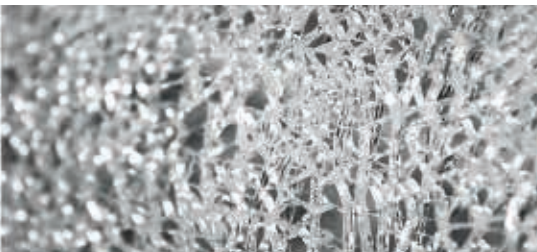
GREY



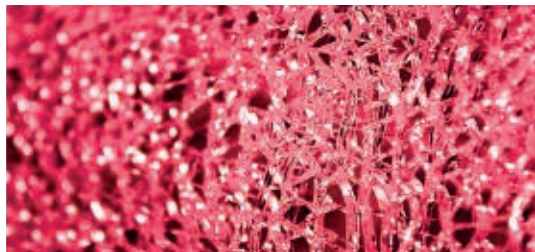
BRONZE



BLUE



SILVER



RED



ROSE-GOLD

\*sample images are for preview purposes only, actual colour may vary.

[WWW.EGW.CO.UK](http://WWW.EGW.CO.UK)

# LamEX

## CRACKED ICE DECORATIVE GLASS

Crackle Glass is made by laminating 3 toughened pieces of glass together, the middle toughened piece is then shattered thus leaving the cracked ice effect sandwiched inside of the other 2 pieces of glass. This can also be made with a mirror backing offering an impressive focal point for any room.

The wonderful reflective qualities of crackle glass can transform the smallest area and bring individuality to larger areas. Due to the make-up of crackle glass 15mm is the minimum thickness.

Currently available in six different mirror back finishes; Silver, Bronze, Grey, Red, Rose-Gold and Blue. Crackle glass is also available without a mirror back - creating see-through effect. Crackle glass is ideal for Table tops, Splashbacks, Worktops and Cladding.



LamEX

when safety is a priority - laminated glass is our solution

## LAMINATED GLASS FOR DESIGN AND ARCHITECTURAL APPLICATIONS

The frequency that Toughened Laminated Glass is being specified is ever increasing due to the combined strength of both Toughened and the Laminating process providing a barrier which is very hard to penetrate.

Available in a range of bespoke thicknesses and used for numerous applications such as Balustrades, Flooring and Canopies where safety is paramount.

We are able to offer a complete laminating service for internal and external use using EVA, PVB, SGP and Vanceva colours.

### WALK ON GLASS

Walk on glass is an excellent way of introducing natural light to dark or subterranean rooms, whilst maintaining that usable and costly floor space.

Please contact our sales team for further advice.





PaintEX

bespoke glass splashbacks - the best way to stand out



# PaintEX

## SPLASHBACKS & WORKTOPS

Our beautiful back painted coloured glass splashbacks and panels will enable you to create a special atmosphere in your home or office, making your space truly unique.

We always use the best quality Low Iron toughened glass with a choice of thickness between 4mm – 19mm. This allows the option of using PaintEX for glass worktops or splashbacks.

Our in-house waterjet precision glass cutting machines will cut out any sockets, notches and cut outs for sinks, basins and baths allowing a seamless look.

Mix PaintEX with our Designer LamEX range to give your home that extra Wow Factor.

## DESIGN

Using our own in-house Graphic Designer we can offer you a completely flexible and creative service. Our designer can help you with creating a Vinyl that will be used as a stencil to create that bespoke pattern, logo or text.

The colour range is quite extensive as we work with RAL, DULUX, Pantone colours. We also have the ability of matching any colour or you can add sparkle for that extra dimension at no extra cost.





PrintEX

set your imagination wild with printed glass



[WWW.EGW.CO.UK](http://WWW.EGW.CO.UK)

# PrintEX

## GLASS PRINTING

From photos to patterns, any image can now be printed onto glass. The perfect way for Architects, Developers and Designers to display creative images onto Facades, Windows and Internal design features. Advanced digital technology allows us to achieve stunning results in order to meet a growing demand of quality and quantity.

We can supply large glass panels with a variety of graphic designs - so your kitchen splashback can now feature stunning scenery, an eye-catching foodie picture or a cool retro pattern. Most importantly, if you have a picture of that cherished memory in your life - why not bring this to life within glass?

## CREATIVITY

Just like with PaintEX glass, we are using our own in-house Graphic Designer to offer you a top class service. We will help choosing that outstanding design layout, touch-up or amend your desired images, and crucially - provide valuable advice. Our designers can supply stock images or create completely bespoke layouts and patterns to suit your needs.



# BlastEX

sandblasted glass - where privacy and light transition is essential



# BlastEX

## FROSTED SATIN GLASS

The satin-smooth, translucent finish of Satin Glass obscures the view through the glass while maintaining a high level of light transmittance.

Satin Glass is manufactured using an acid-etching process that results in a smooth, flat, satin-like decorative surface that will not mark easily.

Satin Glass adds visual and tactile interest, offering privacy while still welcoming abundant light. Satin Glass will create unforgettable settings, and once installed, Satin Glass withstands the test of time and requires no special attention.

Ideal for use in interiors, Satin Glass can be used for partitions, Shower Screens, doors etc...

## SANDBLAST DESIGN GLASS

Sandblasted designs on glass offer a functional glazing solution where a degree of privacy and light transition is required, creating that bespoke and interesting look.

We create bespoke contemporary glass pieces for domestic and architectural spaces. Sandblasting can be performed on any type of Clear Glass, Tinted Glass, Painted Glass, Laminated Glass or even Mirror in any thickness from our product range.





PyroEX

fire-resistant glass for peace of mind



# PyroEX

## PYRO EX-30

Supplied in 6mm and 10mm Toughened Pyro EX-30 is our certified 30 minute fire-rated glass. Pyro EX-30 is a totally clear toughened product which can be used in many applications such as windows, doors, vision panels or table tops.

Please note: only certified upto 0.5 square metres.

## GEORGIAN WIRE POLISHED PLATE

This wired product is tested and assessed as a 30 minute integrity fire-resistant glass. Also known as Pilkington Pyroshield it is the market leading solution in fire-resistance and has been tested in doors in a wide range of buildings from schools to offices.

## GEORGIAN WIRE CAST

Georgian Wire Cast Glass is a fire rated glass with an obscure pattern which contains steel mesh embedded into the glass. The wire offers additional security when utilised in partitions, windows and fire doors and the obscure pattern offers additional privacy.

This product is available in 7mm thickness only.

For PyroEX Glass with more than 30 minute integrity please get in touch with our sales team on 020 8500 1188.





**EXPRESS GLASS WAREHOUSE**

## PARTITIONS

Toughened Glass provides a light and modern solution to partitioning. The glass' inherent transparency offers the feeling of additional space as opposed to solid walls. If privacy is needed then we can provide Sandblasted Designs or coloured or acoustic laminates.

## SHOWER SCREENS

Toughened glass will provide a strong and stylish wet room screen or shower door. Manufactured in 8 and 10 mm toughened glass you have the option to use Low Iron (extra clear glass) for the additional Wow Factor.

Our sales team have intrinsic knowledge of fittings needed such as hinges, channels and seals. We also offer the option to add a polymer coating to your glass which will give you the benefit of self cleaning and prevents water residue.

## TABLE TOPS

Toughened glass will provide a strong and stylish Table Top. For the everyday kitchen, dining or side table we can offer numerous glass finishes and solutions. Mix this with one of our designer finishes and create something special for your home.



[WWW.EGW.CO.UK](http://WWW.EGW.CO.UK)

## BALUSTRADES

Toughened glass Balustrades can add light and space to any stairwell. This modern addition to any home or workspace can be manufactured in toughened or laminated glass dependent on Building Regulations. We can supply all necessary clamps in order to fit your requirements.

## MIRRORS

We are able to supply Silver or Mirror Cut, Polished and shaped to your individual requirements. If using within a bathroom we are able to foil back for protection against condensation. There is also the option to safety back for additional security.

## HEAT SOAKED GLASS

Glass can contain small inclusions in its properties. Once activated these inclusions become unstable and can cause the glass to break at any time sometimes months or even years after installation. These inclusions although very rare can cause disruption and costs when replacing. In certain situations such as walk-on-glass and balustrades, architects would recommend your glass to be Heat Soaked in order to reduce the risk of this happening.





**EXPRESS GLASS WAREHOUSE**

## OUR BUSINESS

Formed in 2001 Express Glass Warehouse is one of the leading Toughened Glass Suppliers in the South East of England. We are a family run business with a dedicated team that will advise and assist you with your enquiries. Located on the borders of East London & Essex we have the ability to deliver nationwide whether it be for a one off project or continuous supply at the fastest lead times.

## OUR PRODUCTS

- Glass Splashbacks
- Glass Balustrades
- Glass Partitions
- Crackle Glass
- Laminated Glass
- Shower Screens
- Fire Glass
- Mirrors
- Glass Table Tops
- Glass Shelves
- Sandblasted Glass
- Printed Glass

## OUR CULTURE

We believe that our Express service sets us apart from the crowd. This begins with all quotations being responded to within 1 hour. Our Express production and delivery methods will go above and beyond to make sure you receive your glass in rapid lead times.

## OUR TEAM

Our dedicated staff have years of experience within the toughened glass industry and are always on hand to help. As a family run business we put service first, meaning that we are able to work fast and respond to our customers needs without anything getting in our way. From start to finish our capable staff are here to help you.

- 1 hour quotation service
- 24/48 hour lead times
- Nationwide Delivery
- Design Service

## OUR MACHINES

We are constantly investing in state of the art equipment so that we can provide the fastest and most efficient service in the industry. To help us produce circa 5000 pieces per day we run 24 hours a day, 7 days a week. Our production team has access to multiple cutting tables, toughening plants, template scanners, polishing and CNC machines that enables us to be leaders in the industry. Alongside these we also have drilling waterjet machines for any holes or cut outs, heat soak oven, paint booth and laminating kilns

## OUR PARTNERS AND CERTIFICATES





**EXPRESS GLASS WAREHOUSE**



As one of the largest toughened glass manufacturers within the UK you can be guaranteed quality and service. Our flexibility allows us to make your priority our priority.

## CONTACT US

 020 8500 1188

 [info@egw.co.uk](mailto:info@egw.co.uk)


 020 8500 1010

 [www.egw.co.uk](http://www.egw.co.uk)

## FOLLOW US ON SOCIAL NETWORKS



## VISIT US AT

 51-55 Fowler Road, Hainault Business Park, Ilford, Essex, IG6 3UT