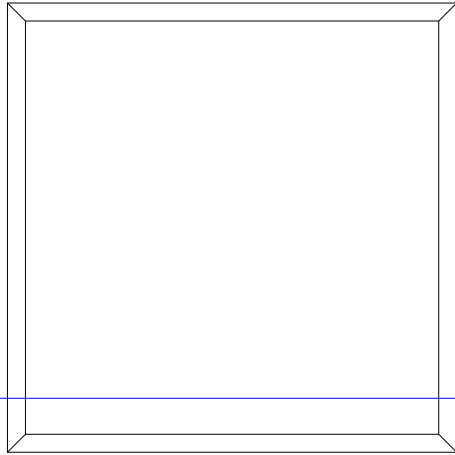
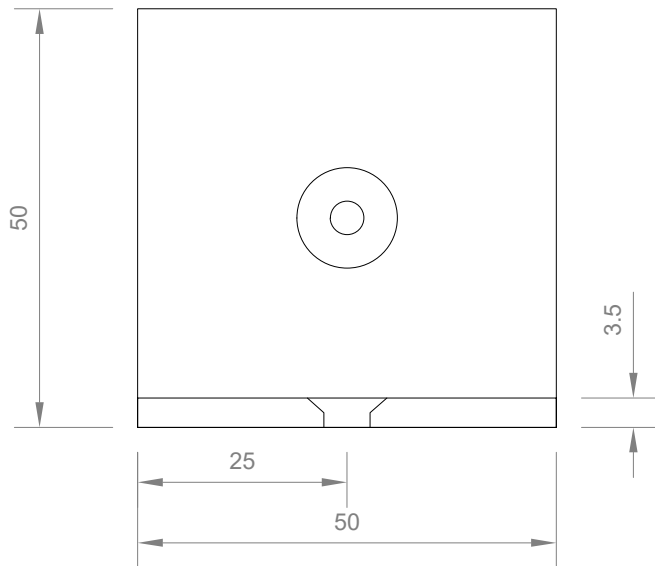


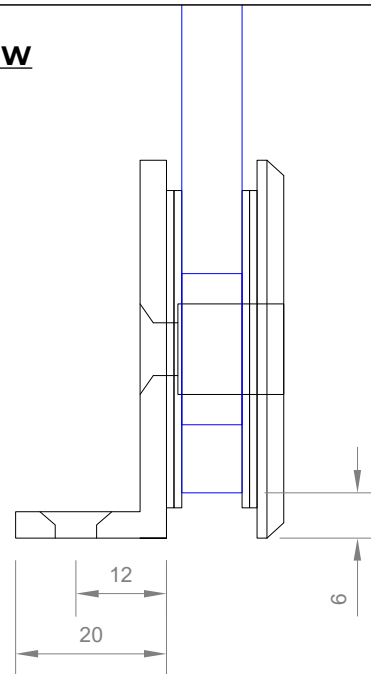
### FRONT VIEW



### REAR VIEW



### SIDE VIEW



**Express Glass Warehouse**  
51-55 Fowler Road,  
Hainault, Essex  
IG6 3UT

Tel: +44 (0)20 8500 1188  
Fax: +44 (0)20 8500 1010  
Email: info@egw.co.uk  
Website: www.egw.co.uk

Copyright (C) - October 2020, All Rights Reserved

### NOTES/SPECIFICATION:

ALL FITTING COMPONENTS IN BRUSHED SATIN NICKEL PLATED BRASS

PRODUCT SUITABLE FOR 8 TO 10mm TOUGHENED GLASS USED IN WALL, BASE AND TOP POSITIONS WHERE REQUIRED.

FITTING SUPPLIED COMPLETE WITH:-

- 1) 4 No. x 1mm CLEAR PVC WASHERS
- 2) 1 No. M6 x 12mm ST/ST HEX SOCKET MACHINE SCREW
- 3) 1 No. ALLEN KEY TO FIT
- 4) 1 No. 10 x 30mm POSI-DRIVE SCREW AND PLUG.

(NOTE CUSTOMER TO PROVIDE ALTERNATIVE FIXINGS WHERE REQUIRED)

6mm GLASS TO WALL/FLOOR GAP

**PRODUCT REF:** SH/APH/B07\_S

**DESCRIPTION:** DIMENSIONED ELEVATIONS AND REQUIRED GLASS PREP DETAIL

**DRAWING REF:** SH/APH/B07\_S - 001