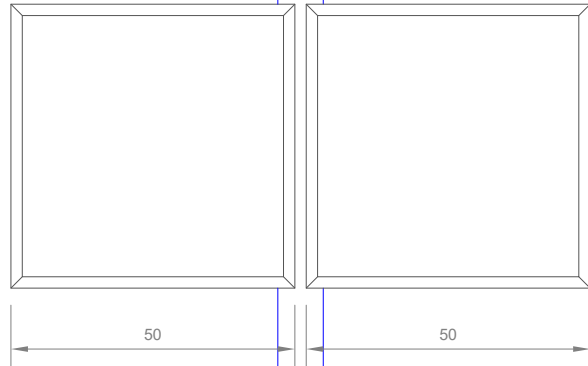
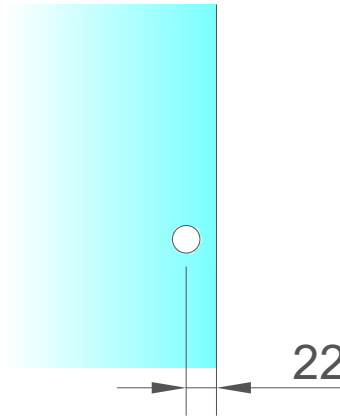


### FRONT VIEW

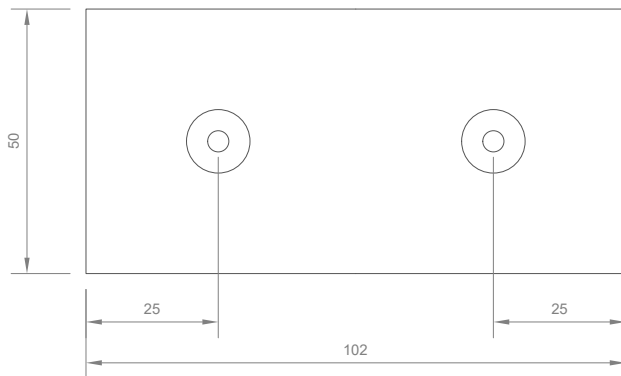


### GLASS PREP

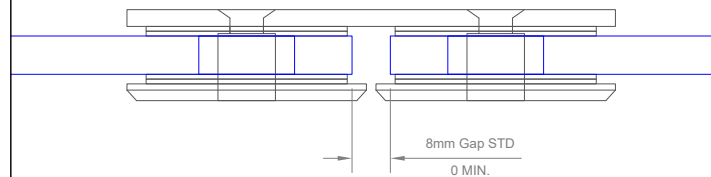
Ø20MM HOLE  
(SLOT IF NEEDED)



### REAR VIEW



### PLAN VIEW



**Express Glass Warehouse**  
51-55 Fowler Road,  
Hainault, Essex  
IG6 3UT

Tel: +44 (0)20 8500 1188  
Fax: +44 (0)20 8500 1010  
Email: info@egw.co.uk  
Website: www.egw.co.uk

Copyright (C) - October 2020, All Rights Reserved

### NOTES/SPECIFICATION:

ALL FITTING COMPONENTS IN CHROME PLATED BRASS

PRODUCT SUITABLE FOR 8-10mm TOUGHENED GLASS, USED IN WALL, BASE AND TOP POSITIONS WHERE REQUIRED

FITTING SUPPLIED COMPLETE WITH:-

- 1) 8 No. x 1mm CLEAR PVC WASHERS
- 2) 2 No. M6 x 12mm ST/ST HEX SOCKET MACHINE SCREW
- 3) 1 No. ALLEN KEY TO FIT

(NOTE CUSTOMER TO PROVIDE ALTERNATIVE FIXINGS WHERE REQUIRED)

**PRODUCT REF: SH/APH/B03**

**DESCRIPTION:** DIMENSIONED ELEVATIONS AND REQUIRED GLASS PREP DETAIL

**DRAWING REF: SH/APH/B03 - 001C**