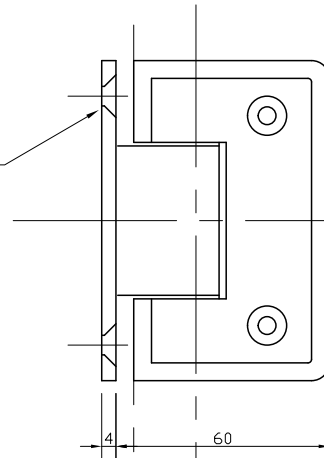


**REAR VIEW
ON HINGE**

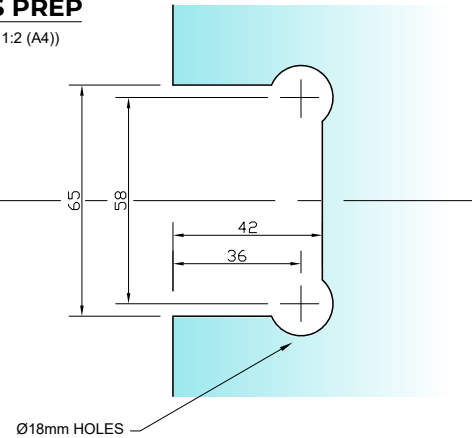
(SCALE 1:2 (A4))

4 No. Ø5.5 HOLES
CSK TO SUIT
No. 10 SCREWS.



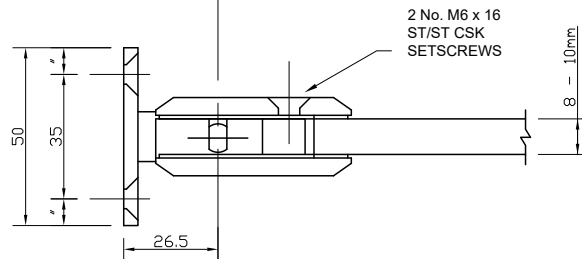
**REQUIRED
GLASS PREP**

(SCALE 1:2 (A4))



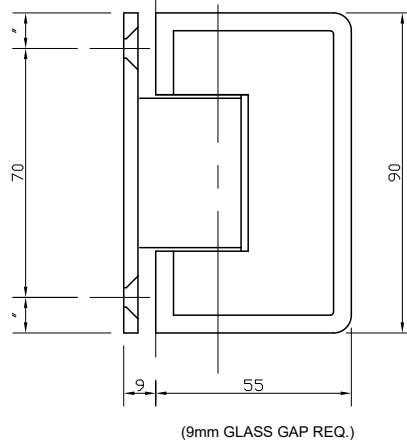
**PLAN VIEW
ON HINGE**

(SCALE 1:2 (A4))



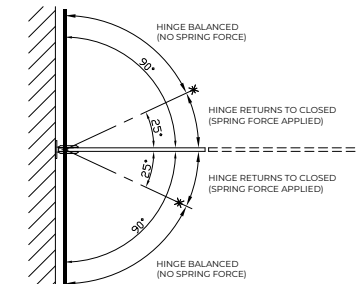
**FRONT VIEW
ON HINGE**

(SCALE 1:2 (A4))



NOTES/SPECIFICATION:

- ALL HINGE COMPONENTS IN CHROME PLATED BRASS.
- PRODUCT SUITABLE FOR 8 TO 10mm TOUGHENED GLASS PANES.
- HINGE SUPPLIED COMPLETE WITH:-
- 1) 2 No. x 1.7mm TRANSLUCENT RUBBER GLAZING WASHERS.
 - 2) 2 No. x 1.1mm TRANSLUCENT RUBBER GLAZING WASHERS
 - 3) 2 No. M6 x 16mm ST/ST HEX SOCKET HEAD CSK SETSCREWS
 - 4) 2 No. HEX SOCKET ALLEN KEYS TO SUIT
 - 5) 4 No. 10 x 40mm POSI DRIVE SCREWS AND PLASTIC PLUGS
- (NOTE CUSTOMER TO PROVIDE ALTERNATIVE FIXINGS WHERE REQUIRED)



PRODUCT REF:	SH/APH/H03
DESCRIPTION:	DIMENSIONED ELEVATIONS AND GLASS PREP DETAILS
DRAWING REF:	SH/APH/H03 - 001A