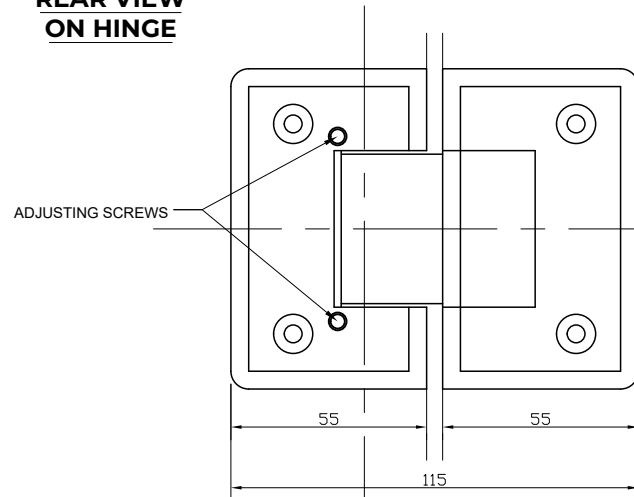


**Express Glass Warehouse**  
51-55 Fowler Road,  
Hainault, Essex  
IG6 3UT

Tel: +44 (0)20 8500 1188  
Fax: +44 (0)20 8500 1010  
Email: info@egw.co.uk  
Website: www.egw.co.uk

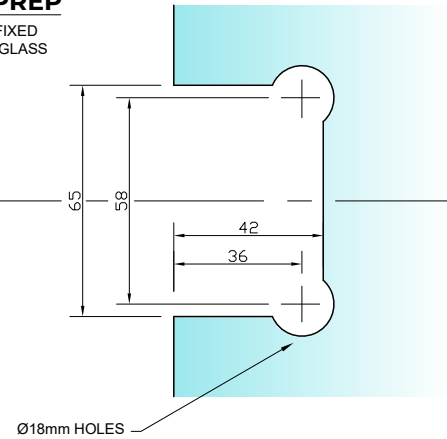
Copyright (C) - October 2020, All Rights Reserved

**REAR VIEW  
ON HINGE**

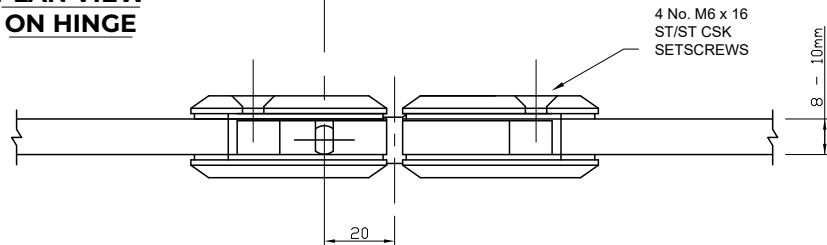


**REQUIRED  
GLASS PREP**

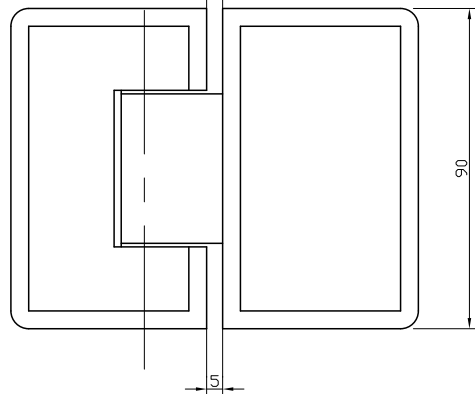
TO BOTH FIXED  
AND DOOR GLASS



**PLAN VIEW  
ON HINGE**



**FRONT VIEW  
ON HINGE**



(5mm GLASS TO GLASS GAP REQ.)

**NOTES/SPECIFICATION:**

ALL HINGE COMPONENTS IN BRUSHED SATIN NICKEL PLATED BRASS.

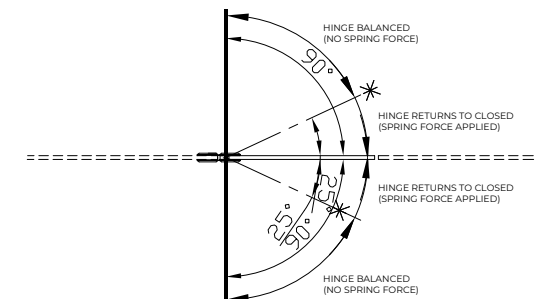
PRODUCT SUITABLE FOR 8 TO 10mm TOUGHENED GLASS PANES.

HINGE SUPPLIED COMPLETE WITH:-

- 1) 2 No. x 1.7mm TRANSLUCENT RUBBER GLAZING WASHERS.
- 2) 2 No. x 1.1mm TRANSLUCENT RUBBER GLAZING WASHERS
- 3) 2 No. M6 x 16mm ST/ST HEX SOCKET HEAD CSK SETSCREWS
- 4) 2 No. HEX SOCKET ALLEN KEYS TO SUIT

ADJUSTABLE CENTRE POINT TO ALIGN WITH JAMB PANEL.

(NOTE CUSTOMER TO PROVIDE ALTERNATIVE FIXINGS WHERE REQUIRED)



**PRODUCT REF:** SH/APH/H02\_S

**DESCRIPTION:** DIMENSIONED ELEVATIONS AND GLASS PREP DETAILS

**DRAWING REF:** SH/APH/H02\_S - 001A