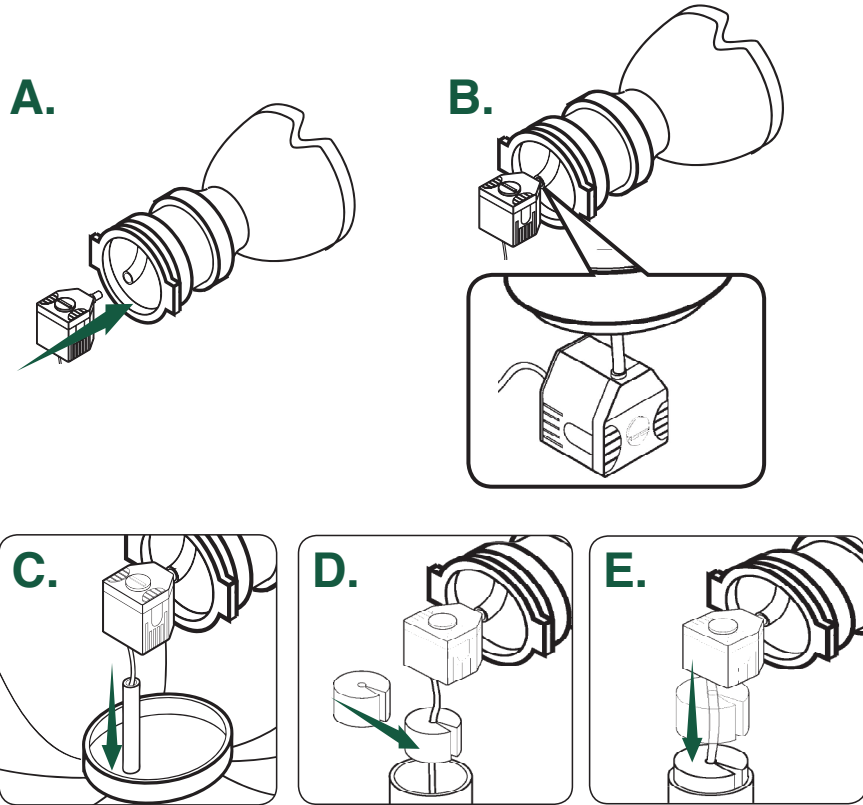


Step Three: Install New Water Pump



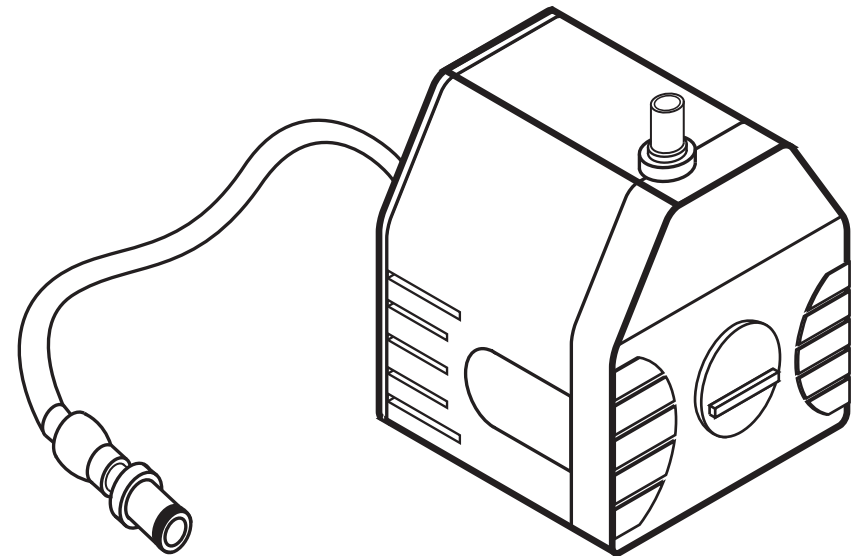
Once the new Water Pump is installed, replace the Decor Top or Fountain Spouts on your fountain. For instructions on how to put your fountain together, please refer to the instructions included with your Rechargeable Fountain.

Manufactured by



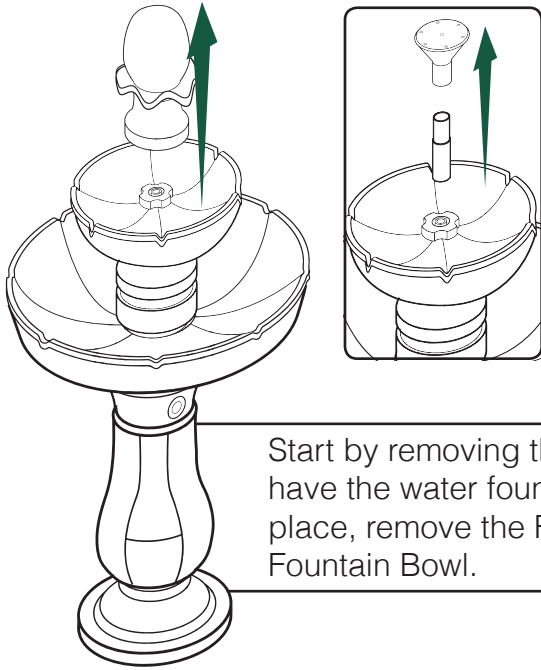
El Cajon, California 92102
Telephone: 1-888-648-2011
On the web: www.hydrostore.com
Twitter: @yrdllc

Water Pump Replacement Instructions



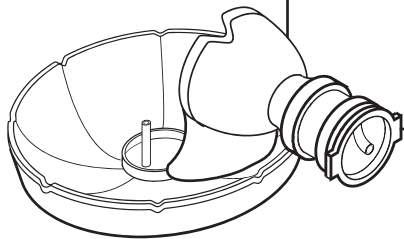
Water Pump Replacement Instructions

Step One: Remove Decor Top or Fountain Spouts



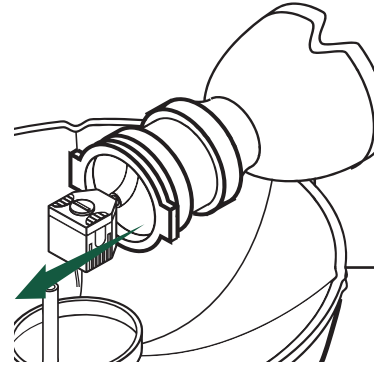
Start by removing the Decor Top or if you have the water fountain configuration in place, remove the Fountain Spouts from the Fountain Bowl.

Step Two: Empty Water from Fountain Bowl

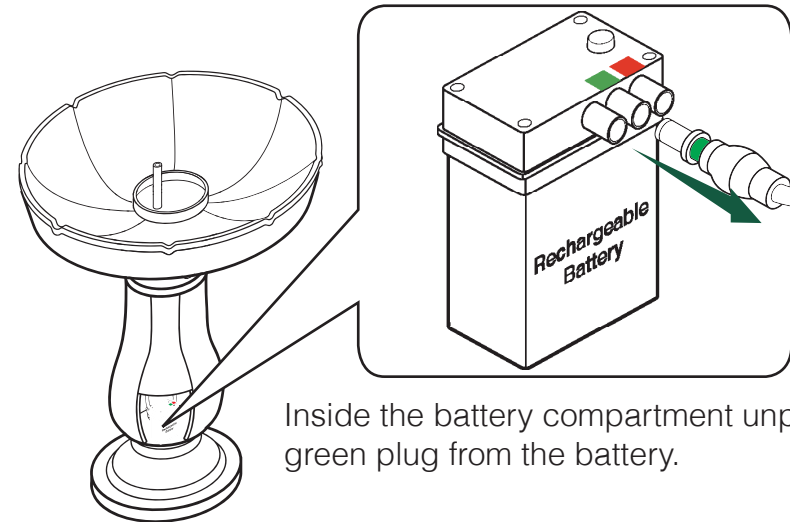


You can pour the water from the Fountain Bowl either into the Large Bowl, your garden or lawn.

Step Two: Detach Water Pump Fountain



Rest the Fountain Bowl in the Large Bowl on its side and pull the Water Pump from the water tube inside the Fountain Bowl.



Inside the battery compartment unplug the green plug from the battery.

Remove the Water-Tight Seal from the tube in the Large Bowl. Then gently pull the Water Pump's power cord up the tube until the full length of cord is out.



Be cautious when pulling the Water Pump power cord from the fountain's base. If you feel resistance while removing the cord, you can look up inside the base through the battery compartment to see what the cord may be stuck on.

