

BERNINITM
F O U N T A I N S



SELF-WATERING
GARDEN PLANTER
WITH OPTIONAL LEGS
Owner's Manual

BERNINITM

F O U N T A I N S

PLEASE READ FIRST BEFORE RETURNING

**Please call us for assistance at 1-619-449-2392
or email us at customercare@berninifountains.com**

Our Customer Care Department is available:

Monday - Friday 8:30am to 4:00pm PST, 11:30am to 7:00pm EST

If you have any questions regarding assembly, parts, or operation, please visit our website at www.berninifountains.com. You will find instructional videos on how to assemble and operate your fountain.

You can also email us with any questions you have.

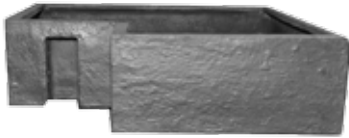
This product comes with a one year Limited Warranty *
against materials and workmanship.

**Please review the list of accessories included with your
BerniniTM fountain on the next page. Please note, images of parts
are not to scale.**

CONTENTS

- 1 Step1: Base Assembly**
- 2 Legs and Base
- 4 Step 2: Fountain Pillar Installation**
- 5 Fountain Pillar Installation
- 7 Step 3: Connection Port & Battery Installation**
- 8 Connecting the Battery
- 9 Inserting the Battery Compartment Door
- 9 Proper Removable of the Battery Compartment Door
- 10 Step 4: Fountain Water Tray & Planter Attachment**
- 11 Fountain Water Tray & Planter Attachment Installation
- 12 Step 5: Fountain Startup**
- 13 Operating Your Fountain
- 16 Self-Watering Garden Feature
- 16 Using the Self-Watering System
- 16 How the Self-Watering System Works
- 17 Adding Rocks to the Fountain Pillar
- 18 Troubleshooting & Maintenance**
- 18 Cleaning your Fountain
- 18 Cold Storage
- 18 Recharging the Battery
- 19 Cleaning the Water Pump 's Parts**
- 19 Water Pump Air Filters
- 19 Water Pump Impeller
- 20 Priming the Water Pump
- 21 Water Pump Connection

Parts for Your Bernini™ Garden Planter:



Planter Attachment



Water Tray



Fountain Pillar



Base with Water Pump



Fountain Legs (optional)



Battery Compartment
Door



Water Pump



Rocks



Connection Port



Battery Charger



Rechargeable
Battery

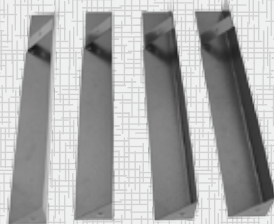
Step 1:

Base and Legs (Legs optional)

You will need:



Base with Water Pump

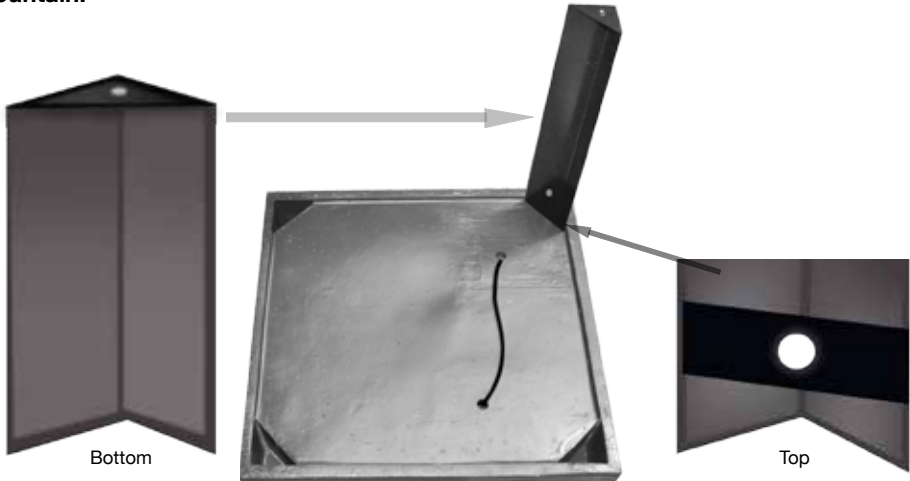


Optional Legs

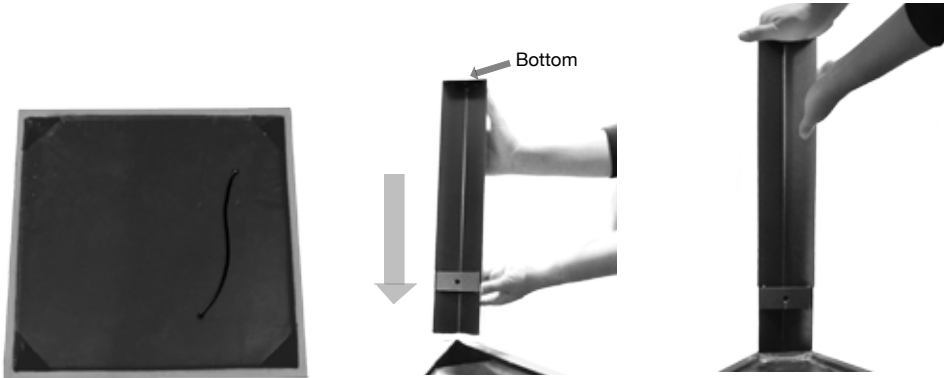


Legs and Base

This section will show you how to install the legs into the base of your new fountain.



Please Note: There is a hole on the leg that creates friction inside of the channel and will create pressure against the wall of the base which will keep it in place. If the leg is hard to slide into the base try using a little dish soap on the part of the leg that slides into the base and hole.



Step 1: Place the base of your fountain bottom up on a flat, firm surface. On the bottom of the fountain you will notice four triangles that the legs will fit into on each corner of the base.

Step 2: Grab a leg and push firmly on the corresponding triangle shape. Note: The hole on the leg must face inward. Please reference the "Top" image above.

Step 3: The leg will slide into the base and lock into place. The hole will lock the leg in place. Repeat this step for the remaining 3 legs.





(Legs optional)



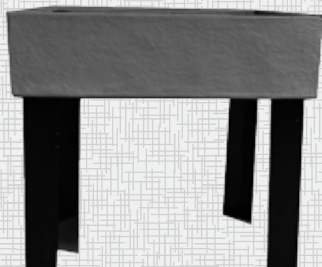
At this point, your fountain should look like the image on the left. Go to the next page for the next step to setup your new Bernini™ Planter.



Step 2:

Fountain Pillar Installation

You will need:



Assembled Base with Water
Pump (Optional Legs)



Fountain Pillar

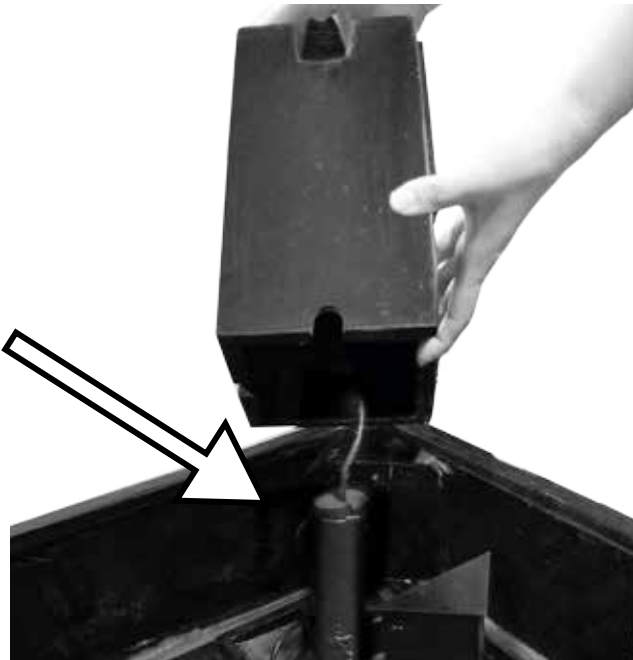


Fountain Pillar Installation



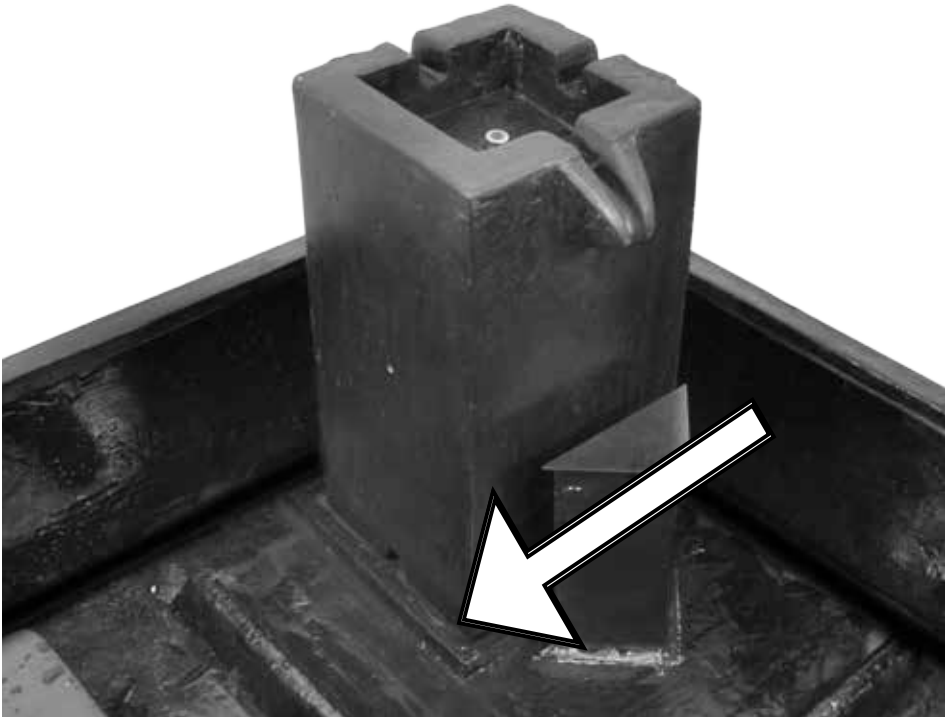
In the next step, you will install the Fountain Pillar on the base. Rest the Fountain Pillar on the side of the base as shown in the next image. **Note:** The Water Pump is pre-installed in the base.

Step 1: Inside the fountain Pillar is the Water Pump Tube. Connect the male outlet on the top of the Water Pump to the tube inside of the Fountain Pillar. Make sure this connection is snug.



Step 2: Hold the Fountain Pillar upright and set it in to the ridge in the base.





Step 3: Once the Fountain Pillar is properly installed it should look like the image above. Ensure that the Fountain Pillar is sitting level on the base.

NOTE: please ensure that water spouts are as shown above to avoid any damage to the Fountain Pillar.



(Legs optional)



At this point, your fountain should look like the image on the left. Go to the next page for the next step to setup your new Bernini™ Fountain.



Step 3:

Connection Port & Battery Installation

You will need:



Fountain
Assembled
(Legs optional)



Connection Port



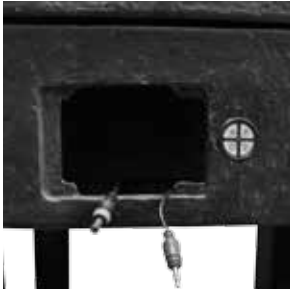
Rechargeable
Battery



Battery
Compartment
Door



Connecting The Battery



Step 1: In the open Battery Compartment are two cords that need to be connected to the Connection Port.

If you do not see the two cables inside the battery compartment, reach into the base and gently pull them out until they are hanging outside the Battery Compartment. (As shown in the image above)



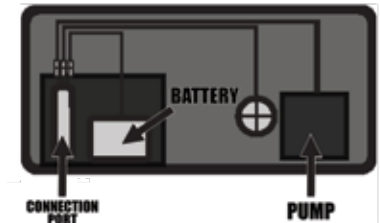
Step 2: The 2 cords, Rechargeable Battery and the Connection Port are color coded. Using the cords protruding from the base and the cord from the battery, (3 in total), connect the color coded cords to their corresponding receptacles on the Connection Port. Use the image below for more help on connecting the Rechargeable Battery.



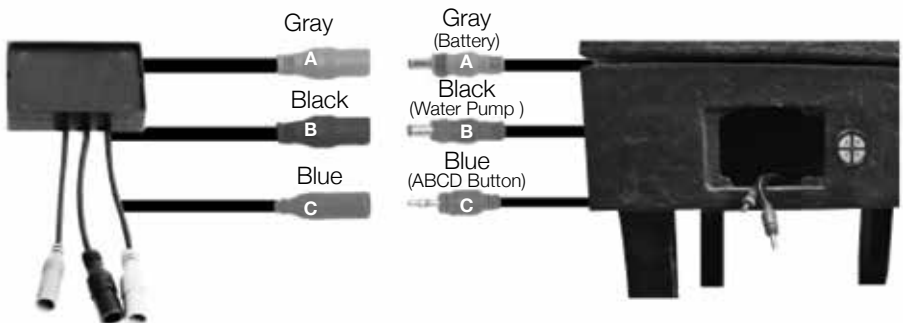
Step 3: Place your Connection Port inside the Battery Compartment.



Step 4: Place the battery inside the Battery compartment in front of the Connection Port. (See illustration)



NOTE: USE CAUTION WHEN PLACING BATTERY INSIDE THE COMPARTMENT. DUE TO THE MANUFACTURING PROCESS THERE MIGHT BE SHARP EDGES.



Inserting the Battery Compartment Door

After you have placed the cables, Rechargeable Battery and Connection Port inside your fountain you should then place the Battery Compartment Door on the base of the Fountain.



Step 1: Start by lining up the notch on the right side of the Battery Compartment Door with the notch on the right side of the battery opening.



Step 2: Push the Battery Compartment Door in toward the right.



The image above shows the correct installation of the Battery Compartment Door.

Removing the Battery Compartment Door



Step 1: Carefully disconnect the Battery Compartment Door from the base by gently pulling outward from the left side.



Step 2: Slide the Battery Compartment Door to the left to disengage the door tab from the base.



DO NOT OVER EXTEND THE BATTERY COMPARTMENT DOOR BY OPENING DOOR TOO FAR TO THE RIGHT!

This may cause damage to your new Bernini™ Planter.



(Legs Optional)



At this point, your Planter should look like the image on the left. Go to the next page for the next step to setup your new Bernini™ Planter.

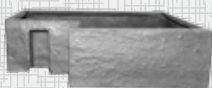


Step 4:

Planter Water Tray & Planter Attachment



Water Tray



Planter Attachment



Planter Assembled
(Legs optional)



Fill Your Planter

Fill the base until water is about 1 inch (2.5 centimeters) from the bottom to the top.

After you have filled your Planter, firmly grasp onto the Fountain Pillar agitate the water by quickly shaking the Fountain Pillar back and forth for about five seconds.

This is to dislodge any air bubbles that may be caught in your Water Pump. Press the C button once to turn your fountain on. Water should be flowing from the top of your fountain. If water is not flowing, press the C button once more to turn your fountain off, and repeat the step above.

IF YOUR FOUNTAIN IS MAKING A LOUD NOISE, DON'T PANIC!

This just means that there are air bubbles stuck in the Water Pump. Your pump will not be harmed and you can easily fix this issue. You can try priming the fountain again by repeating the steps above, however, if the problem still persists, you can find the solution in the “Priming The Water Pump” section.

Fountain Water Tray & Planter Attachment Installation

In this step you will add the Water Tray & Planter Attachment to the Self-Watering Garden Planter. These steps are necessary before you start using the Self Watering Garden Feature.

Note: After this step you can add soil and plants to the Planter Attachment. The next page would explain this process more in detail.



Step 1: Ensure the base is on a firm flat surface with Fountain Pillar in place.



Step 2: Use two hands to place the Water Tray on the base.



Step 3: After you set the Water Tray on top of the base now you can place the Planter Attachment on top of the Water Tray.



Step 5:

Fountain Startup

You will need:

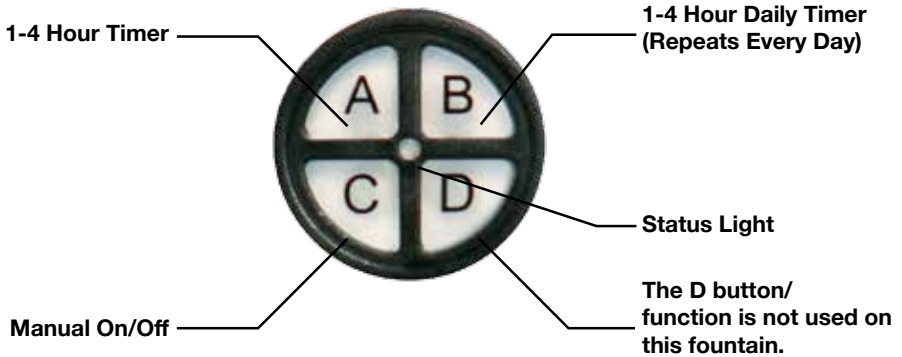


Fountain Assembled
(Legs optional)



Operating Your Fountain

The on-board control panel is located to the right of the battery door opening. See the diagram below to see how the all-new on-board controls work for your Bernini™ Fountain.



BUTTON	DESCRIPTION
A (1-4 Hour Timer)	<p>Runs the fountain for 1-4 hours with automatic shut off.</p> <p>One hour operation: press the A button once for your fountain to turn on with an automatic shut-off after one hour of operation.</p> <p>Two hour operation: press the A button twice and your fountain will automatically shut-off after two hours of operation.</p> <p>Three hour operation: press the A button three times and your fountain will automatically shut-off after three hours of operation.</p> <p>Four hour operation: press the A button four times and your fountain will automatically shut-off after four hours of operation.</p> <p>How To Use This Function:</p> <ol style="list-style-type: none"> 1. Press the A button one, two, three or four times to turn your fountain on for the desired automatic run time. 2. The Status Light will blink once for each hour you have selected to confirm your fountain's 1-4 Hour Timer, up to four hours. 3. At the end of the desired interval, your fountain will automatically turn off.



BUTTON	DESCRIPTION
B (1-4 Hour Daily Timer)	<p>This function is the same as the 1-4 Hour Timer (button A) except with the added feature of automatically turning your fountain on at the same time the next day for the interval you selected.</p> <p>One hour operation: press the B button once for your fountain to turn on with an automatic shut-off after one hour of operation. This will repeat daily at the same time each day.</p> <p>Two hour operation: press the B button twice and your fountain will automatically shut-off after two hours of operation and repeat daily at the same time.</p> <p>Three hour operation: press the B button three times and your fountain will automatically shut-off after three hours of operation and repeat daily at the same time.</p> <p>Four hour operation: press the B button four times and your fountain will automatically shut-off after four hours of operation and repeat daily at the same time.</p> <p>How To Use This Function:</p> <ol style="list-style-type: none"> 1. Select the amount of time you would like the fountain to run by pressing the B button one, two, three or four times. 2. Your fountain will then run for the selected amount of time and at the end of the selected duration it will automatically turn off. Then your fountain will automatically turn on at the same time the next day for the run time duration you selected. <p>Example: If you turn on your fountain, choose a two hour run time by pressing the B button twice at 5pm, your fountain will turn off at 7pm and turn on again the next day at 5pm and run for two hours automatically.</p>
C (Manual On/Off)	<p>Turns the fountain on and off without any timer. Can be used when extended run times are desired.</p> <p>Note: Fountain will run until the battery loses its charge.</p>
D	<p>This button/function is not used on this fountain.</p>
Status Light	<p>Status light will blink for the number hours you have selected when using the timer functions (buttons A and B).</p>



You can now try your Bernini™ fountain to see if everything is working correctly! Turn your fountain on and if you see water flowing from the outlet in the middle of the Fountain Pillar, go to the next page to set up the Self-Watering Garden Feature. **If water is not flowing, try priming the water pump, go to the “Priming the Water Pump” section.**



Self-Watering Garden Feature

Transplant potted plant(s) into the Garden Planter.

During first use, some of the soil will transfer from the bottom of the Planter into the Water Tray causing dirt to show up in the Base.

After a week or so of use, you may want to clean the water Tray and the Planter of debris and the loose soil will stop transferring to the base, allowing the fountain to run cleanly.

NOTE: Once the planter is full of soil and plants, lifting may require more than one person.

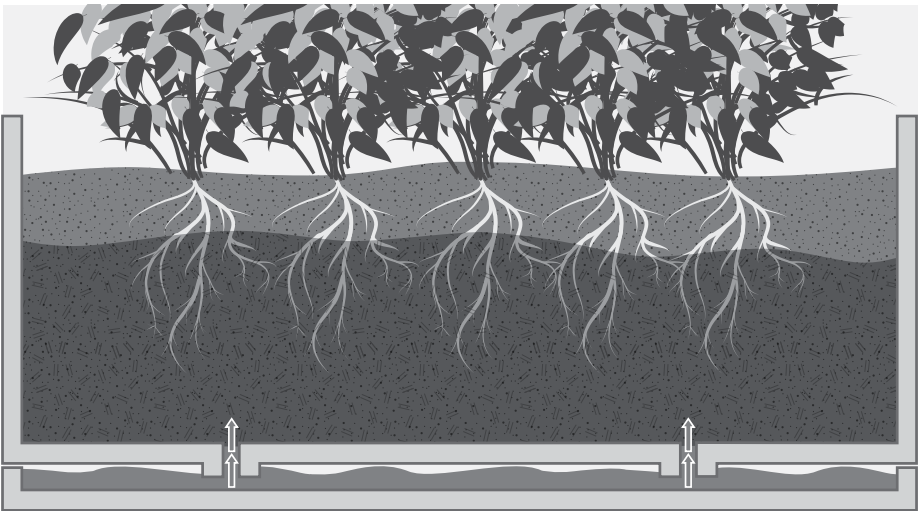
Using the Self-Watering System

Your Self-Watering Aerating Garden Fountain is designed to adjust for different types of plants depending on their water requirements.

How the Self-Watering System Works

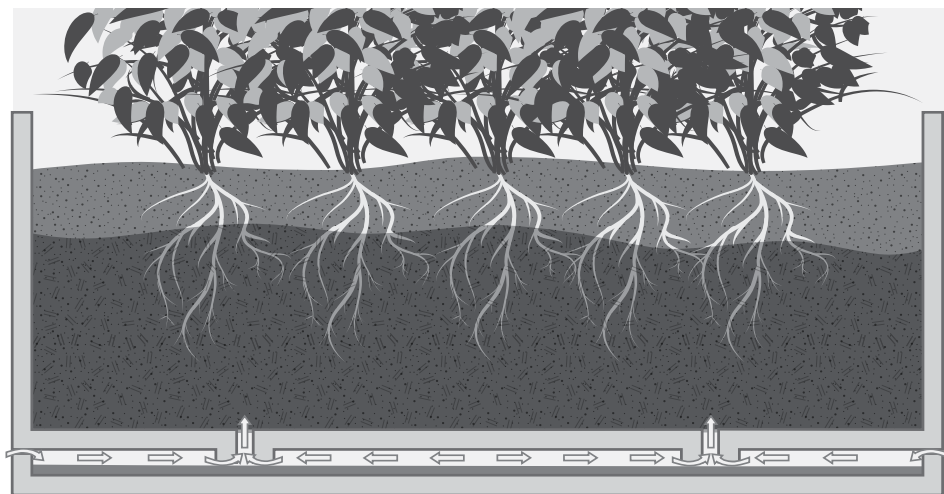
Your Self-Watering Garden Planter waters from the bottom up. Do not worry if you do not see the top soil becoming wet after the first day or two of use. The bottom layer of the soil will be watered every time you run the fountain. After approximately three days, the soil will reach its maximum water level.

When your Self-Watering Garden Planter is off, the roots of your plant will be aerated to produce strong healthy roots. When the Self-Watering Garden Planter is on, the water level will rise above the surface of the Planter Attachment, saturating the soil.



While your fountain is on, the water level rises, watering your plant from bottom to top.



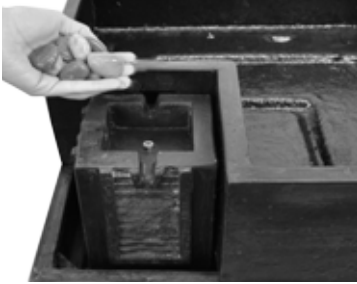


When your fountain is off, the water level lowers, creating an air gap that allows air to aerate your plant's roots.

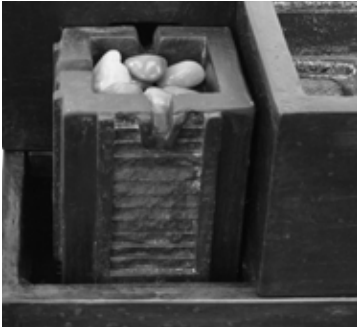


Adding Rocks to the Fountain Pillar

The Self-Watering Garden Planter comes with rocks that you can add to embellish your fountain.



Step1: Arrange the rocks as desired in the recess of the Fountain Pillar. As shown above in the images.



(Legs optional)



At this point, your fountain should look like the image on the left. Turn on your Fountain and enjoy!

NOTE: PLANTS NOT INCLUDED



Troubleshooting & Maintenance

Cleaning Your Fountain

Remove the Planter Attachment & the Water Tray and place it in a safe place. To clean your fountain, drain of all water and disassemble. Use a mild soap and a soft cloth to clean the parts of your Bernini™ Fountain. The base of your fountain will form a natural patina finish which with time may appear light or whiter than the original color. This is normal. **DO NOT SCRUB YOUR FOUNTAIN, AS THIS COULD CAUSE DAMAGE TO THE FINISH OF YOUR BERNINI™ FOUNTAIN.**

Cold Storage

Drain the water from fountain prior to the first freeze of the season. Clean and dry the fountain of all water. Remove the rechargeable battery and the Water Pump and bring it indoors. **Be sure to store the battery upright.** (Now is a great time to clean the pump to remove any debris that may have accumulated throughout the year. See the “Cleaning The Water Pumps’ Parts” section) Store in a warm dry area.

Recharging The Battery

After the average run time of approximately 38 hours, it may be time to charge the battery for your Bernini™ Fountain. If you connect your battery to the charger before you plug into your outlet, the charger's light will glow a solid green to signify connection to the battery. Once plugged into the outlet, the light will glow a solid red until charged. Then it will turn green.



Begin by disconnecting the battery from the Connection Port and remove from the base of your fountain.

Step 1: Plug the battery charger into an electrical wall outlet.



Step 2: Take the gray cord that is connected to your battery and plug it into battery charger cord. While the battery is charging, the light on the charger will be solid red.



Step 3: Charge the battery for 12-14 hours. When the battery is reaching it's fully charged capacity, the light will blink for several minutes. Once the light is a solid green, the battery is at it's full charge. At this point, you can detach the battery from the charger and plug the battery into your fountain.

IMPORTANT

DO NOT CHARGE ON COUNTER TOPS, CARPETS OR OTHER FINISHED SURFACES. IT IS RECOMMENDED THAT THE BATTERY BE PLACED ON A CONCRETE OR SAFE SURFACE WHILE CHARGING.



Cleaning the Water Pumps' Parts

Water Pump Air Filters

After about six weeks of usage, you may want to clean the Water Pump's filter and impeller to keep your Bernini™ Fountain in tip-top shape. You will need to drain your Fountain Pillar of all water prior to cleaning the Water Pump parts.



Begin by disconnecting the pump from the Fountain Pillar.

Step 1: Remove the front of the Water Pump by grabbing the sides of the front panel and pull it off the unit.



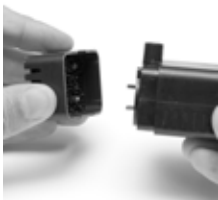
Step 2: Pull the Water Pump filter from the front panel.



Step 3: Wash the filter under running water until debris has been removed. Then replace the filter and pump's front cover.

Water Pump Impeller

The impeller inside of the Water Pump is what pushes water up through your fountain, allowing you to enjoy the soothing sounds and wonderful sights of your Bernini™ Fountain. After long periods of usage, this part will need to be cleaned to make sure your fountain runs optimally.



Step 1: Remove the front of the Water Pump by grabbing the sides of the front panel and pull it off the unit.



Step 2: Remove the impeller chamber cover. This is tightly fitted on to the impeller chamber, but will come off.



Step 3: Remove the impeller from its chamber.



Step 4: Rinse the impeller until all debris has been removed. Then replace the impeller in the impeller chamber, put the impeller chamber back on and then replace the pump's front panel.



Is your fountain making a loud noise or do you not see water flowing?

Try Priming the Water Pump

If you find the Water Pump is running, but water is not flowing from your fountain, or you hear a loud grinding noise coming from your fountain, not to worry, you can try priming the Water Pump :

Begin by turning your fountain off. Firmly grasp onto the Fountain Pillar agitate the water by quickly shaking the Fountain Pillar back and forth for about five seconds. Then press the C Button to turn your fountain back on.

If the problem still persists, repeat previous step 2 - 3 times. This helps dislodge any air bubbles in your pump that may be causing the problem.

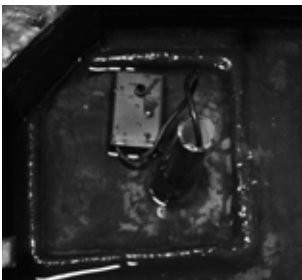
If the problem still persists, try the method below:

Before beginning, remove the Planter Attachment.

Then remove the water tray that is located under the planter attachment. After removing the Water Tray you can carefully remove the Fountain Pillar.

Now detach the Water Pump from the feeder tube inside the Fountain Pillar.

When removing the Water Pump , use caution when pulling the pump from the feeder tube. Pinch the bottom of the feeder tube close to the pump with one hand and then pull the Water Pump from the feeder tube with your other hand.



Step 1: Submerge the Water Pump into the water inside the base and lightly shake the pump underwater to release air bubbles inside the vents on the Water Pump.

Step 2: Turn the fountain on and you should see water flowing from the Water Pump. Let the pump run for about ten seconds and then turn your fountain off.

Step 3: Reconnect the Water Pump to the feeder tube inside the Fountain Pillar and stand up the Fountain Pillar into the ridge in the base.



Water Pump Connection

If your Bernini™ Fountain did not come with the Water Pump already connected to the tube inside of the Fountain pillar or if the Water Pump gets disconnected from the Fountain Pillar, use these instructions to reconnect your Water Pump.



Before beginning, remove the Garden Planter attachment.

Step 1: Then remove the Water Tray.



Step 2: Hold the Fountain Pillar up right and set it into the ridge in the base.



Step 3: Connect the male outlet on the top of the Water Pump to the tube inside of the Fountain Pillar. Make sure this connection is snug.

Then reassemble the Fountain Pillar with the instructions in the “Pillar Installation” section.

BERNINI™ F O U N T A I N S

LIMITED ONE YEAR WARRANTY

This product has a one year limited warranty on all materials and workmanship. Bernini warrants the original purchaser of this product that the product will be free from manufacturing defects in workmanship and material for a period of one (1) year from the date of original purchase. If within one (1) year this product fails due to defect in material or workmanship, Bernini will repair, replace or supply any defective part at their option. The purchaser must contact Bernini and provide a description of the defective part, including digital pictures if requested, with this original purchase documentation as validation of warranty coverage. This warranty gives you specific legal rights and you may also have other rights which varies from state to state.

This warranty does not cover or apply to: (a) damage to the product due to misuse, mishandling, and abuse, (b) products not used in accordance with instructions, (c) product not assembled or installed according to instructions, and (d) normal wear and tear.

Call us for assistance at 1-619-449-2392 or you can email us at:
customer care@berninifountains.com
Our Customer Care Department is available:
Monday - Friday 8:30am to 4:00pm PST / 11:30am to 7:00pm EST



IMPORTANT BATTERY SAFETY INSTRUCTIONS

DANGER: Do not store battery in an airtight container as it may cause an explosion.

PROPOSITION 65 WARNING: Battery posts, terminals and related accessories contain lead and lead compounds, chemicals known to the State of California to cause cancer and reproductive harm. Wash hands after handling.

WARNING: When using electric devices, basic safety precautions should always be followed to reduce the risk of fire, electric shock and personal injury, including the following:

WARNING:

1. Do not incinerate the battery even if it is severely damaged or is completely worn out. The battery can explode in a fire. Check with municipal codes in your area for possible special disposal instructions.
2. If liquid leaks from the battery cell, discontinue use immediately and dispose of properly.
3. Do not charge battery in rain or in wet location.
4. Never attempt to open the battery for any reason. If the plastic housing of the battery breaks or cracks, immediately discontinue use and do not recharge. If the battery appears to be dusty or dirty, wipe it off with a soft cloth.
5. Use only the included battery.
6. Do not attempt to disassemble, remodel or destroy the battery, as it may cause battery leakage, fire, or bursting; and could also create sulfuric acid spills from the battery resulting in possible burns to person and damage to the immediate environment.
7. Exercise care in handling batteries in order not to short the battery with conducting materials such as rings, bracelets or keys. The battery or conductor may overheat and cause burns.
8. The battery contains diluted sulfuric acid, a very toxic substance. If the battery leaks and the liquid inside spills on the skin or clothing, immediately wash it off with plenty of clean water. If the liquid splashes into eyes, immediately flush the eyes with plenty of clean water and consult a doctor. Sulfuric acid in the eyes may cause loss of eyesight and acid on the skin will cause burns.
9. Charge battery using the specified charger and under the charging conditions as specified. Charging the battery under any other conditions may cause the battery to overheat, emit hydrogen gas, leak, ignite or burst.
10. When this product is not used for 30 days or more, remove the battery from the fountain, charge it fully and store in a place where humidity is low. Do not store the battery under direct sunlight or in high temperatures. Unsatisfactory storage conditions may cause deterioration in battery performance, and may shorten the service life.
11. When charging the battery always do so in a well ventilated area and where you can observe the charging process.
12. Never dispose of batteries in the garbage. Disposal of batteries in the garbage is unlawful under state and federal environmental laws and regulations. Always take used batteries to your local battery-recycling center.
13. **DO NOT CHARGE ON COUNTER TOPS, CARPETS OR OTHER FINISHED SURFACES. IT IS RECOMMENDED THAT THE BATTERY BE PLACED ON A CONCRETE SURFACE WHILE CHARGING.**

This device complies with Part 15 of the FCC Rules. Operation is subject to the following two conditions: (1) this device may not cause harmful interference, and (2) this device must accept any interference received, including interference that may cause undesired operation.

WARNING: Changes or modifications to this unit not expressly approved by the party responsible for compliance could void the user's authority to operate the equipment."

NOTE: This equipment has been tested and found to comply with the limits for a Class B digital device, pursuant to Part 15 of the FCC Rules. These limits are designed to provide reasonable protection against harmful interference in a residential installation. This equipment generates, uses and can radiate radio frequency energy and, if not installed and used in accordance with the instructions, may cause harmful interference to radio communications.

However, there is no guarantee that interference will not occur in a particular installation. If this equipment does cause harmful interference to radio or television reception, which can be determined by turning the equipment off and on, the user is encouraged to try to correct the interference by one or more of the following measures:

- Reorient or relocate the receiving antenna.
- Increase the separation between the equipment and receiver.
- Connect the equipment into an outlet on a circuit different from that to which the receiver is connected.

Consult the dealer or an experienced radio/TV technician for help.

BERNINITM
F O U N T A I N S

Santee, California 92071

Patent Number: US 9,108,212 B2

Email: customercare@berninifountains.com

On the web: www.berninifountains.com

Facebook & Pinterest: Bernini Fountain Company

Instagram: @berninifountains Twitter: @yrdllc

© Yeiser Research & Development, LLC; 2016. All rights reserved.

Made in China

001069 SWGP rev 5a us