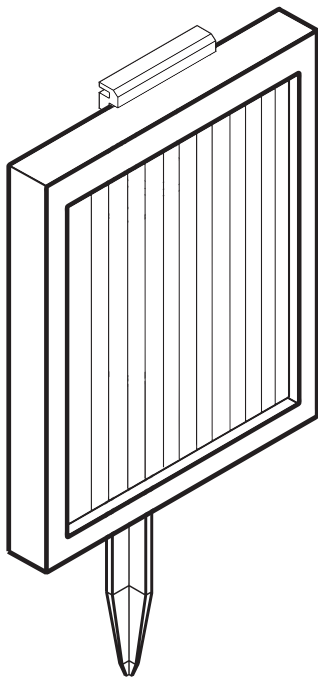
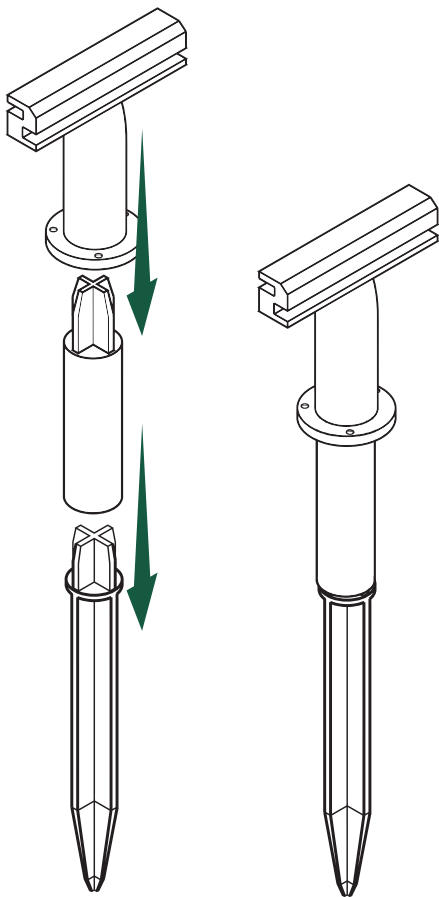


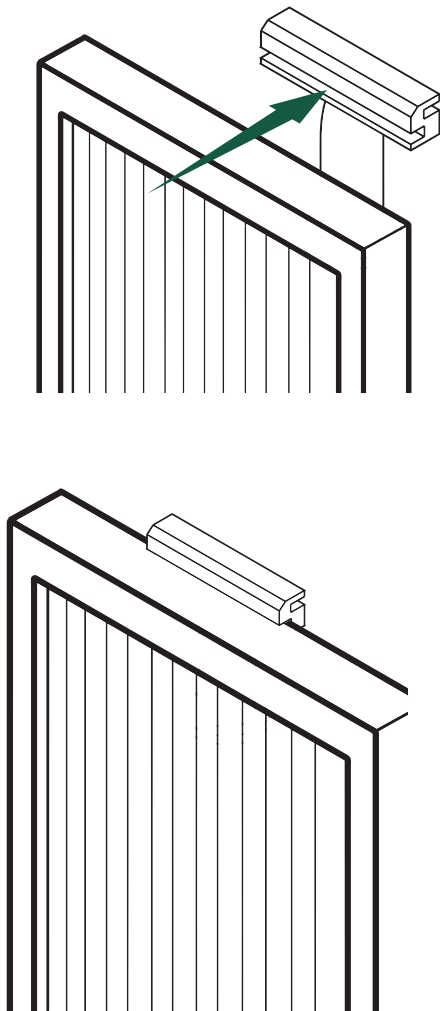
Solar Panel Instructions



Step 1

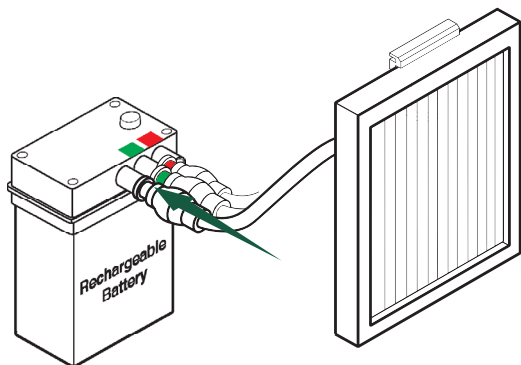
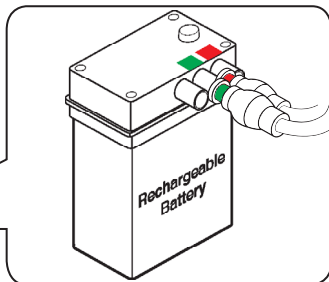
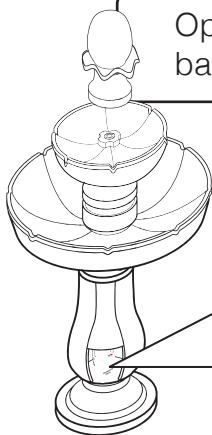


Step 2



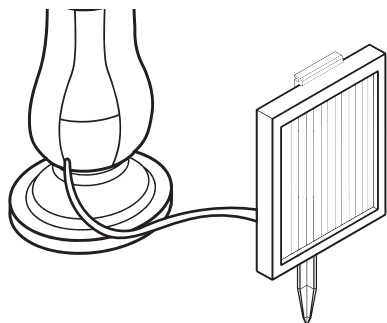
Step 3

Open the battery compartment on the base of your Rechargeable Fountain.



Plug the power cord from the solar panel into the black labelled receptacle on the battery inside the fountain's base.

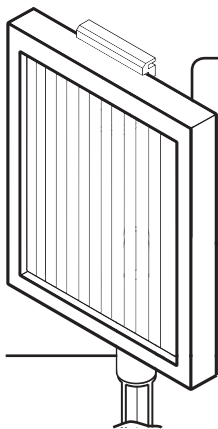
Step 4



Replace the battery compartment door. When you close the compartment door, you will see a small outlet in the bottom left corner of the compartment's door for the solar panel's cord to feed through.



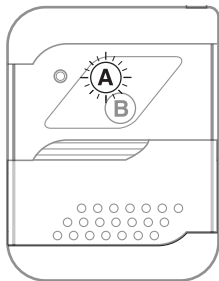
Make sure to place the solar panel that in a spot that gets plenty of sun to power your fountain.



Push the stake assembly into soft dirt until the stake assembly, with solar panel attached, can securely stand upright.

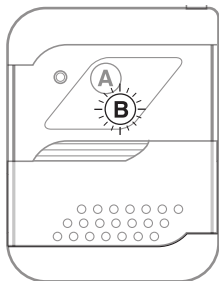
Operating Fountain with Remote Control

Powering Fountain On and Off



Press the “A” button to power your fountain on and off.

Switching Operation Mode



While your fountain is on, press the “B” button to run your fountain automatically for a given amount of time. *Reference the table below.*

Mode	Action
One Hour Operation	Press “B” button 1x
Two Hour Operation	Press “B” button 2x
Three Hour Operation	Press “B” button 3x
Four Hour Operation	Press “B” button 4x

Manufactured by

BERNINITM

www.berninifountains.com

Worldwide Patents Pending 2012

El Cajon, California 92021

© Yeiser Research & Development, LLC; 2012. All rights reserved.

Made in China