

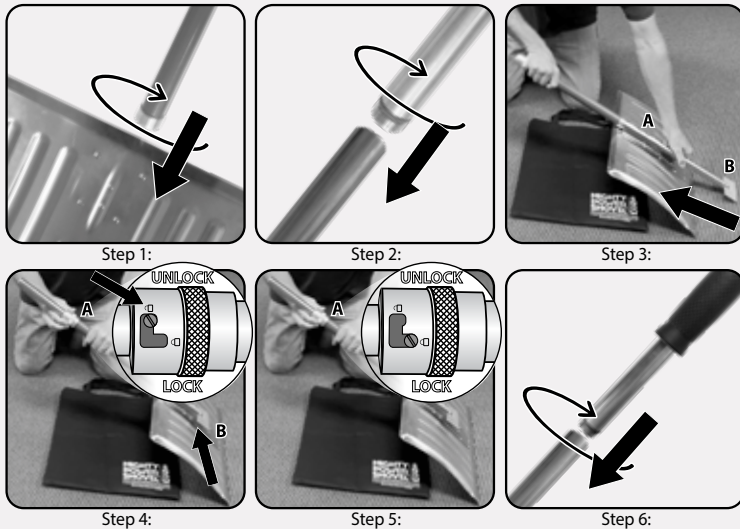
BERNINI® Mighty Power Snow Shovel™

OWNERS MANUAL

*PLEASE READ THESE INSTRUCTIONS COMPLETELY BEFORE ATTEMPTING TO ASSEMBLE/OPERATE YOUR NEW MIGHTY POWER SNOW SHOVEL™

1. Assembling The Mighty Power Snow Shovel™

Contents:



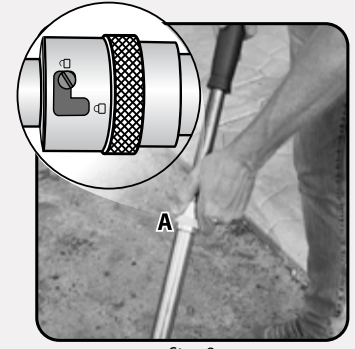
1. Remove the Shovel Head and Outer Locking Tube from the box and thread the end of the Locking Tube into the receiving end of the Shovel Head bracket making sure to tighten the tube until secure (Step 1).
 2. Remove the Inner Ice Breaker tube and the Inner Locking Channel tube from the box and thread together until secure (Step 2).
 3. Laying the Shovel down, insert the Inner Tubes into the open end of the Shovel Head receiver bracket (Step 3A), making sure the Ice Breaker end is facing the bottom (Step 3 B). Once inserted, locate the Locking Mechanism (Step 4A) and set it into the unlock position. Continue sliding the Inner Tubes through the lock until the Ice Breaker is fully inserted (Step 4B).
 4. Locate the Locking Mechanism and set it to the lock position (Step 4A). The Inner Tubes can now be locked in place.
 5. Remove the Inner Handle tube from the box and thread into the top end of the assembled Inner tubes until secure (Step 6). You are now ready to use the Mighty Power Snow Shovel™.
- NOTE: If desired you can leave your Mighty Power Snow Shovel assembled or you can disassemble your Mighty Power Snow Shovel and store in the Mighty Power Snow Shovel Storage Bag.

2. Operating Mighty Power Snow Shovel™ Ice Breaker

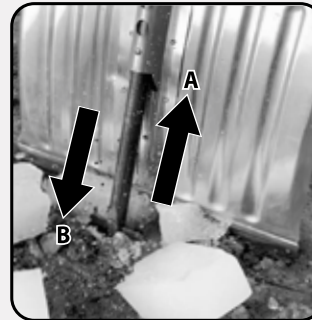
1. To operate the ice breaker feature, rotate the shovel and place the ice breaker pointing away from you (Step 7).
2. While holding the handle, locate the locking mechanism and place it into the unlock position (Step 8A). (Caution: Once unlocked, the inner handle tubes will be free to impact the ground.)
3. You are now able to operate the ice breaker by sliding the inner tube up (Step 9A) and down (Step 9B) to contact the ground and break up the ice.
4. Once finished locate the locking mechanism and place it back into the locked position (Step 10). Draw the handle upward until it automatically locks itself in place (step 11). You are now ready to use as a snow shovel (Step 12).



Step 7:



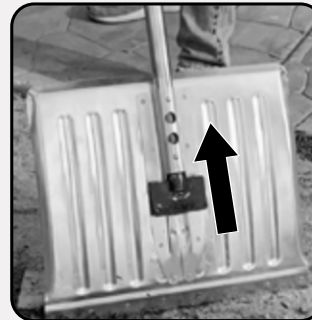
Step 8:



Step 9:



Step 10:



Step 11:



Step 12:

LIMITED ONE YEAR WARRANTY

This warranty gives you specific legal rights and you may also have other rights which vary from state to state. This product has a one year limited warranty on all materials and workmanship. Bernini® warrants the original purchaser of this product that the product will be free from manufacturing defects in workmanship and material for a period of one (1) year from the date of original purchase. If within one (1) year this product fails due to defect in material or workmanship, Bernini® will repair, replace or supply any defective part(s) at their discretion. The purchaser must contact Bernini® and provide a description of the defective part, including digital pictures if requested, with this original purchase documentation as validation of warranty coverage. This warranty does not cover or apply to: (a) damage to the product due to misuse, mishandling, and abuse, (b) products not used in accordance with instructions, (c) product not assembled or installed according to instructions, and (d) normal wear and tear.

Call us for assistance at +1 (619) 449-2392 or you can email us at customer@berninifountains.com or mail us at:
 9545 Pathway Street, Santee, CA 92071,
 Our Customer Care Department is available:
 Monday - Friday 8:30am to 4:00pm PST / 11:30am - 7:00pm EST

Santee, California 92071 | World Wide Patents Pending | Email: customer@berninifountains.com | On the web: www.berninifountains.com
 Facebook & Pinterest: Bernini Fountain Company | Instagram: @berninifountains Twitter: @yrdllc
 © Yeiser Research & Development, LLC; 2020. All rights reserved.

001245 BMPSSI rev 1h US

Made in China | Designed in the USA

January 2020© Yeiser Research & Development LLC, Mighty Power Snow Shovel™ and Bernini® Fountains. Trade names, product names and logos used in this document are the trademarks or registered trademarks of Yeiser Research & Development LLC, Santee, CA 92071