

CONTENTS:

INSTRUCTIONS:



1. Find a suitable bowl and place on a flat, level surface and place the Fountain Tower into the center of the bowl.
2. Connect one side of the water tube to the water pump and the other end to the bottom side of the Battery Compartment (Figure 2a). Connect The power cable of the Water Pump to the power cable on the battery compartment (Figure 2b). Lower the Battery/Water pump Assembly into the Fountain Tower (Figure 2c). See instruction below on how to insert & change the batteries.
3. Fill bowl with water, water level should be approximately 3 inches, this will ensure water covers the water pump (see fountain diagram).
4. Turn on your new Bernini™ Fountain and enjoy.

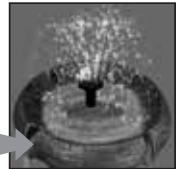
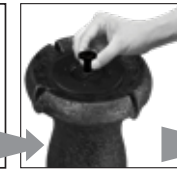
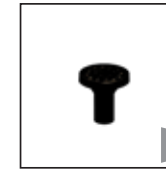
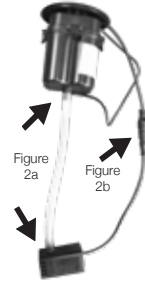
OPERATING YOUR FOUNTAIN TOWER:

The pump must be off to reset run time and durations: Set the duration of operation from 1 hour to 4 hours by pressing the button 1 to 4 times, when the button is pressed the pump will start running. 3 seconds after the button is pressed and you are finish setting the duration, within 3 seconds, the LED will flash the number of times the button was pressed. After the LED flashes to confirm duration and the pump is spraying water, the duration is set and cannot be changed unless reset. You can stop the pump once by pressing the button for over 2 seconds. But the pump will repeat spray water the next day. If you want to change the setting of duration, stop the pump by press the button over 2 seconds. The pump will stop. Only when the pump not spraying water, you can press the button again to set the duration. The pump will start 24 hours after the new setting.

You may want to reset the pump so that it will not spray water automatically next day. If the pump is spray water, press the button over 2 seconds to stop it. When the pump is NOT spraying, simply press the button over 2 seconds and the LED will light 3 seconds to confirm no

DANCING WATER ATTACHMENT: (OPTIONAL):

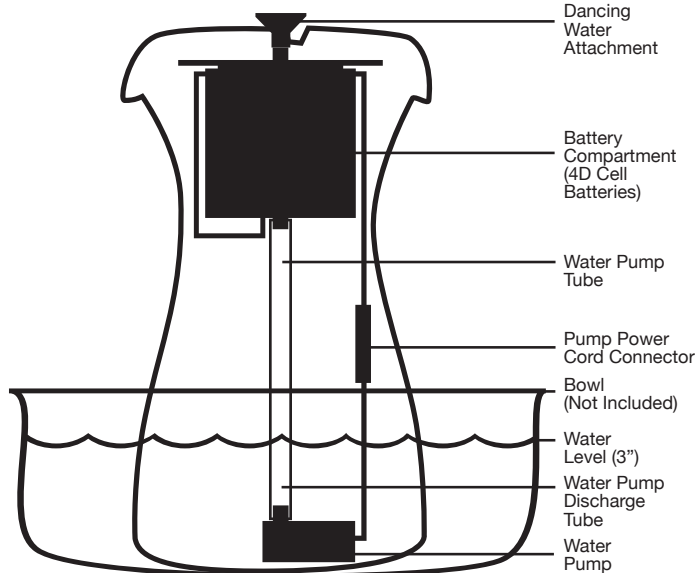
When fountain is not running, connect the Dancing Water Attachment to the outlet in the middle of the Fountain Tower.



Need Help?
Call us for assistance at +1 (619) 449-2392
or you can email us at: customer care@berninifountains.com
Our Customer Care Department is available:
Monday - Friday 8:30am to 4:00pm PST / 11:30am - 7:00pm EST

FOUNTAIN DIAGRAM:

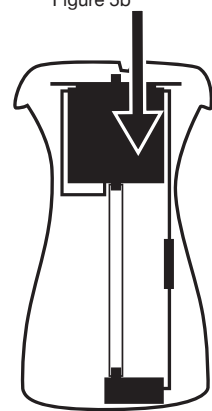
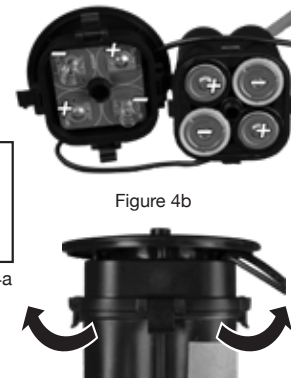
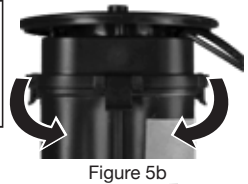
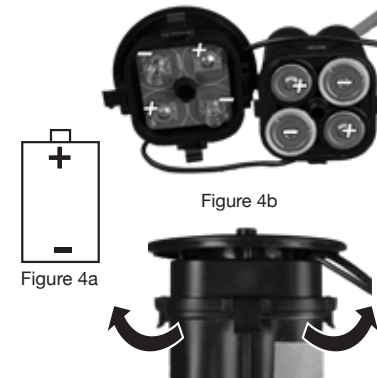
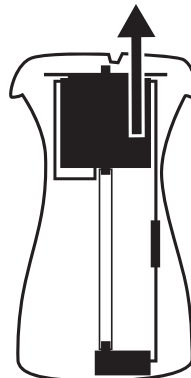
INSERTING & CHANGING BATTERIES (4D CELL BATTERIES NOT INCLUDED):



Recommended minimum bowl size is approximately 12 inches

1. Ensure fountain is not running.
2. Lift out battery and pump assembly (Figure 1).
3. Set pump assembly on a flat sturdy surface (Figure 2).
4. Un clip the (4) battery retaining clips (Figure 3a, 3b and 5a).
5. Insert 2 batteries with the (+) side facing up and 2 batteries with the (-) facing down (Figure 4 & 4a).
6. Re-clip the (4) battery retaining clips (Figure 5b).
7. Re insert the battery and pump assembly into the Fountain Tower (Figure 6).
8. When installing or reinstalling the battery and pump assembly into the Fountain Tower ensure that top plate of the battery & pump assembly sits flat on top of Fountain Tower to prevent water from leaking into assembly reducing fountain performance.

NOTE: If one or more of the battery retaining clips pops loose from the Battery Compartment do not worry. They are designed to pop loose if excessive pressure is applied, simply press the battery retaining clips back into the Battery Compartment. DO NOT operate fountain unless all 4 battery clips are properly secured to make the compartment air tight. If not, water could seep in to the Battery Compartment.



TROUBLESHOOTING:

PRIMING THE WATER PUMP

If you find the water pump is running, but water is not flowing from your fountain, you can try priming the water pump: Rest the Fountain Tower Assembly on its side and detach the water pump from the feeder tube inside the Fountain Tower Assembly. When removing the water pump, use caution when pulling the pump from the feeder tube. Pinch the bottom of the feeder tube close to the pump with one hand and then pull the water pump from the feeder tube with your other hand.

- Step 1:** Submerge the water pump into the water inside the bowl and lightly shake the pump to release air bubbles inside the pumps vents.
Step 2: Turn the fountain on, water should flow from the pump outlet. Run pump run for about 10 seconds and then turn fountain off.
Step 3: Reconnect the water pump to the feeder tube inside the Fountain Tower, place the Fountain Tower into the bowl, turn fountain on.

WATER PUMP CONNECTION

If your Bernini™ Fountain water pump becomes disconnected from the water tube inside of the fountain bowl or if the Water Tube gets disconnected from the Battery Compartment, use these instructions to reconnect your water pump.

- Step 1:** Rest the fountain bowl on its side in the large bowl (Figure 1).
Step 2: Connect the outlet on the water pump to the tube inside of the Fountain Tower Assembly. Ensure connection is snug (Figure 2).

WATER PUMP POWER CORD CONNECTION

If your Bernini™ Fountain does not turn on and the batteries are known to be good, the Water Pump Power Connection may have become loose or disconnected. Follow these steps to check the connection of the Water Pump Power Cord Connection.

- Step 1:** Lift out battery and pump assembly from the Fountain Tower (See Figure 1 of the Changing Batteries Section) and set battery and pump assembly on a flat sturdy surface (See Figure 2 of the Changing Batteries Section).
Step 2: Inspect the Water Pumps electrical connector and ensure that the 2 ends of the connection are seated snugly together (Figure 3).
Step 3: Set the battery and pump assembly back into the Fountain Tower (See Figure 6 of the Changing Batteries Section) and turn your fountain on and see if the water pump is running correctly.



Figure 1



Figure 2

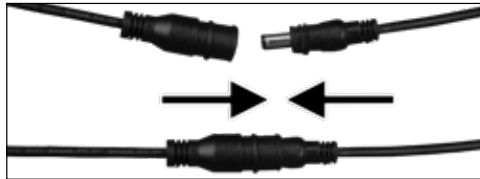


Figure 3

IMPORTANT BATTERY SAFETY INSTRUCTIONS:

PROPOSITION 65 WARNING: Battery posts, terminals and related accessories contain lead and lead compounds, chemicals known to the State of California to cause cancer and reproductive harm. Wash hands after handling.

WARNING: When using electric devices, basic safety precautions should always be followed to reduce the risk of fire, electric shock and personal injury, including the following:

WARNING: 1. Do not incinerate the battery even if it is severely damaged or is completely worn out. The battery can explode in a fire. Check with municipal codes in your area for possible special disposal instructions.

2. If liquid leaks from the battery cell, discontinue use immediately and dispose of properly.
3. Use only 4-1.5V D Cell Batteries..
4. Do not attempt to disassemble, remodel or destroy the battery, as it may cause battery leakage, fire, or bursting; and could also create sulfuric acid spills from the battery resulting in possible burns to person and damage to the immediate environment.
5. Never dispose of batteries in the garbage. Disposal of batteries in the garbage is unlawful under state and federal environmental laws and regulations. Always take used batteries to your local battery-recycling center.

LIMITED ONE YEAR WARRANTY

This product has a one year limited warranty on all materials and workmanship. Bernini™ warrants the original purchaser of this product that the product will be free from manufacturing defects in workmanship and material for a period of one (1) year from the date of original purchase. If within one (1) year this product fails due to defect in material or workmanship, Bernini™ will repair, replace or supply any defective part at their option. The purchaser must contact Bernini™ and provide a description of the defective part, including digital pictures if requested, with this original purchase documentation as validation of warranty coverage. This warranty does not cover or apply to: (a) damage to the product due to misuse, mishandling, and abuse, (b) products not used in accordance with instructions, (c) product not assembled or installed according to instructions, and (d) normal wear and tear.

Call us for assistance at +1 (619) 449-2392 or you can email us at: customer care@berninifountains.com
 Our Customer Care Department is available: Monday - Friday 8:30am to 4:00pm PST / 11:30am - 7:00pm EST

Please read first before returning:

Please call us for assistance at 1-619-449-2392 or email us at customer care@berninifountains.com. Our Customer Care Department is available: Monday - Friday 8:30am to 4:00pm PST, 11:30am to 7:00pm EST. If you have any questions regarding assembly, parts, or operation, please visit our website at www.berninifountains.com. You will find instructional videos on how to assemble and operate your fountain, and keeps you up to date on our newest products. You can also email us with any questions you have. This product comes with a one year limited warranty against materials and workmanship.

CARE AND MAINTENANCE:

CLEANING YOUR FOUNTAIN

In order to keep your fountain in tip-top shape and free of algae, you should clean your fountain every two months. To clean your fountain, drain of all water and disassemble. Use a mild soap and a soft cloth to clean the parts of your Bernini™ Fountain. Your fountain bowl will form a natural patina finish which with time may appear lighter or whiter than the original color. This is normal. **DO NOT SCRUB YOUR FOUNTAIN, AS THIS COULD CAUSE DAMAGE TO THE FINISH OF YOUR BERNINI™ FOUNTAIN.**

COLD STORAGE

Drain the water from fountain prior to the first freeze of the season. Clean and dry the fountain of all water. Remove the batteries and the water pump and bring it indoors. (Now is a great time to clean the pump to remove any debris that may have accumulated throughout the year) Store in a warm dry area.

CLEANING THE WATER PUMP'S PARTS

WATER PUMP AIR FILTERS

After about six weeks of usage, you may want to clean the water pump's filter and impeller to keep your Bernini™ Fountain in tip-top shape.

Step 1: Remove the front panel of the water pump by grabbing the sides of the front panel and pull it off the unit.

Step 2: Remove the Air Filter from the front panel of the Water Pump.

Step 3: Rinse the Air Filter until all debris has been removed. Then replace the Air Filter back in front panel of the Water Pump and then replace the Water Pump's front panel.

WATER PUMP IMPELLER

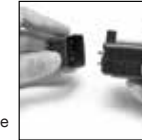
The impeller inside of the Water Pump is what pushes water up through your fountain, allowing you to enjoy the soothing sounds and wonderful sights of your Bernini™ Fountain. After long periods of usage, this part will need to be cleaned to make sure your fountain runs optimally.

Step 1: Remove the front of the Water Pump by grabbing the sides of the front panel and pull it off the unit.

Step 2: Remove the impeller chamber cover. This is tightly fitted on to the impeller chamber, but will come off.

Step 3: Remove the impeller from its chamber.

Step 4: Rinse the impeller until all debris has been removed. Then replace the impeller in the impeller chamber, put the impeller chamber back on and then replace the pump's front panel.



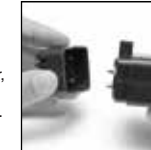
Step 1



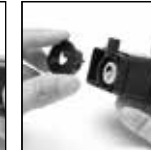
Step 2



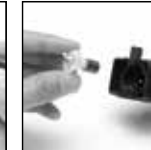
Step 3



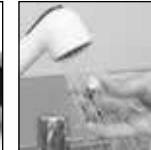
Step 1



Step 2



Step 3



Step 4