

Battery Conversion Kit



Battery Conversion Kit
Owner's Manual

5.2 rev 2a us

IMPORTANT BATTERY SAFETY INSTRUCTIONS, READ FIRST

DANGER: Do not store battery in an airtight container as it may cause an explosion.

PROPOSITION 65 WARNING: Battery posts, terminals and related accessories contain lead and lead compounds, chemicals known to the State of California to cause cancer and reproductive harm. Wash hands after handling.

WARNING: When using electric devices, basic safety precautions should always be followed to reduce the risk of fire, electric shock and personal injury, including the following:

WARNING:

1. Do not incinerate the battery even if it is severely damaged or is completely worn out. The battery can explode in a fire. Check with municipal codes in your area for possible special disposal instructions.
2. If liquid leaks from the battery cell, discontinue use immediately and dispose of properly.
3. Do not charge battery in rain or in wet location.
4. Never attempt to open the battery for any reason. If the plastic housing of the battery breaks or cracks, immediately discontinue use and do not recharge. If the battery appears to be dusty or dirty, wipe it off with a soft cloth.
5. Use only the included battery. Contact our customer service line for a replacement at 888-648-2011.
6. Do not attempt to disassemble, remodel or destroy the battery, as it may cause battery leakage, fire, or bursting; and could also create sulfuric acid spills from the battery resulting in possible burns to person and damage to the immediate environment.
7. Exercise care in handling batteries in order not to short the battery with conducting materials such as rings, bracelets or keys. The battery or conductor may overheat and cause burns.
8. The battery contains diluted sulfuric acid, a very toxic substance. If the battery leaks and the liquid inside spills on the skin or clothing, immediately wash it off with plenty of clean water. If the liquid splashes into eyes, immediately flush the eyes with plenty of clean water and consult a doctor. Sulfuric acid in the eyes may cause loss of eyesight and acid on the skin will cause burns.
9. Charge battery using the specified charger and under the charging conditions as specified. Charging the battery under any other conditions may cause the battery to overheat, emit hydrogen gas, leak, ignite or burst.
10. When this product is not used for 30 days or more, remove the battery from the fountain, charge it fully and store in a place where humidity is low. Do not store the battery under direct sunlight or in high temperatures. Unsatisfactory storage conditions may cause deterioration in battery performance, and may shorten the service life.
11. When charging the battery always do so in a well ventilated area and where you can observe the charging process.
12. Never dispose of batteries in the garbage. Disposal of batteries in the garbage is unlawful under state and federal environmental laws and regulations. Always take used batteries to your local battery-recycling center.
13. **DO NOT CHARGE ON COUNTER TOPS, CARPETS OR OTHER FINISHED SURFACES. IT IS RECOMMENDED THAT THE BATTERY BE PLACED ON A CONCRETE SURFACE WHILE CHARGING.**

CONTENTS

1 Step1: Fountain Disassembly

- 1 Removing The Battery Compartment Door
- 1 Disconnecting & Removing The Battery
- 2 Removing The Flower Bud Finial
- 2 Removing The Love Birds Decor Top
- 3 Removing The Self-Watering Garden Feature
- 3 Removing The Self-Watering System Spacers
- 4 Removing The Fountain Bowl
- 5 Removing The Large Bowl
- 5 Removing Old ABCD Switch

6 Step 2: Fountain Reassembly

- 6 Installing New ABCD Switch
- 6 Installing The Large Bowl
- 7 Installing Fountain Bowl
- 9 Connecting The Battery

10 Step 3: Operation Of Your Fountain

- 10 Fill Your Fountain
- 10 Operating Your Fountain

13 Troubleshooting and Maintenance

- 13 Recharging The Battery
- 14 Priming the Water Pump

Please Note: All steps in this Instruction apply to the Battery Conversion Kit only. For all other fountain assembly steps please refer to your fountains instructions.

Parts to your new Bernini™ Fountain:



Rechargeable Battery



Connection Port



ABCD Switch



Battery Charger

NOTE: Before starting any steps please start by draining all water from fountain.

Step 1: Fountain Disassembly Removing The Battery Compartment Door

Slide the battery compartment door on the base of the fountain to the right, remove the door to allow access to the fountain battery and cables.



Step 1: Locate the door on the base of the fountain.



Step 2: Slide the battery door to the right until the door is clear of the door guides in the fountain base.

NOTE: Set the Battery Door aside and do not discard, this part will be reused during the reassembly of the fountain.

NOTE: The battery will not be reused, please properly dispose of battery.

Disconnecting & Removing The Battery

Important: Never dispose of batteries in the garbage. Disposal of batteries in the garbage is unlawful under state and federal environmental laws and regulations. Always take used batteries to your local battery-recycling center.



Step 1: Remove the battery from the compartment as shown in the picture.



Step 2: Disconnect the cords from the receptacles on the battery.



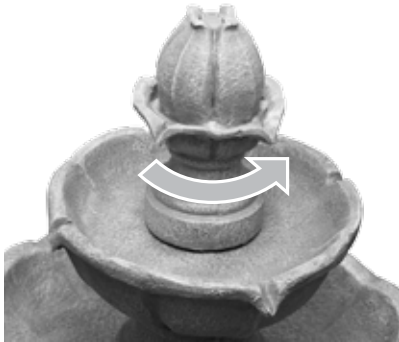
Step 3: The only cord that will be reused will be the red LED light cord. The other cords will be removed in future steps.

Remember! If you ever need help, you can contact our customer care at: 619-442-2392 or customer care@berninifountains.com

Step 1 Cont.: Fountain Disassembly

Start by removing the Flower Bud Finial, Love Birds Decor Top or Self Watering Garden Bowl that may be on your Fountain. NOTE: Please skip to the appropriate step depending on the Flower Bud Finial, Love Birds Decor Top or Self Watering Garden Bowl that may be on your Fountain.

Removing The Flower Bud Finial



Step 1: The Flowerbud Finial locks into place using a key system in the middle of the fountain bowl. To remove twist the Flowerbud Finial a quarter turn counter clockwise to unlock it.



Step 2: Lift the Flowerbud Finial up and off the fountain bowl. Note: The clear extension tube might come loose with Flower Bud Finial. This is normal and the extension tube can be removed from the Flower bud finial for reassembly in a later step.

Removing The Love Birds Decor Top



Step 1: Lift the Love Bird Finial up and over the water outlet.



Step2: Disconnect any of the Dancing Water Feature spouts that may be on the outlet in the fountain bowl.

Remember! If you ever need help, you can contact our customer care at:
619-442-2392 or customer care@berninifountains.com

Step 1 Cont.: Removing The Self-Watering Garden Feature

Carefully lift off the Self-Watering Garden Feature as to not damage any plants or flowers that may have been planted in the Self-Watering Garden Feature .

NOTE: The Self-Watering Garden Bowl does not lock into place.



Removing The Self-Watering System Spacers

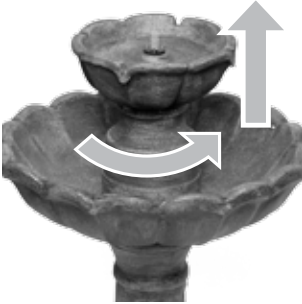
Remove any Self-Watering System Spacers that may be used with your Self-Watering Garden Feature.



NOTE: Ensure that Flower Bud Finial, Love Birds Decor Top or Self Watering Garden Bowl are in a safe location, do not discard, these parts will be reused during the reassembly of the fountain.

Remember! If you ever need help, you can contact our customer care at:
619-442-2392 or customer care@berninifountains.com

Step 1 Cont.: Removing The Fountain Bowl



Step 1: The Fountain Bowl locks into place using a key system in the middle of the Large Bowl. To remove the Fountain Bowl twist it a quarter turn counter clockwise this will unlock it, then lift it off and rest the fountain bowl on its side inside the large bowl as shown in the next step.



Step 2: Set the Fountain Bowl on its side inside the large bowl as shown in the picture. This will allow you to safely remove the 2 cables that run down the pipe in the middle of the large bowl in the next step.



Step 3: Pull the rubber plug and pull out the two cords from the pipe. If a resistance is felt it is more than likely due to the plug at the end of the cord snagging on something inside the base. Gently reach into the battery compartment locate the snagged cable and guide it up and out of the tube.



Your fountain should now look like the image above. Proceed to the next step and remove the Large Fountain Bowl.

NOTE: After the cables have been removed from the large bowl and base set the fountain bowl in a safe location, it will be reused in following steps.

Remember! If you ever need help, you can contact our customer care at: 619-442-2392 or customer care@berninifountains.com

Step 1 Cont.: Removing The Large Bowl



Step 1: Turn the large bowl a quarter turn counter clockwise to unlock it.



Step 2: Lift upward on the large bowl and step on the edge of the base at the same time to prevent the base from lifting. Lift the Large Bowl off the Base and set aside in a safe spot for re installation in a later step.



Step3: Make sure to place the base of your fountain on a flat, firm surface.

Removing Old ABCD Switch



Step 1: Reach up inside the base through the battery door. Follow the ABCD Switch cord up to the back side of the button.



Step 2: Apply pressure on the back side of the button until it pops out.

Note: This will not required an excessive amount of force.



Step 3: Pull the ABCD Switch and cord out of the base.

Note: The old ABCD Switch will not be reused, please properly dispose of switch.

Remember! If you ever need help, you can contact our customer care at: 619-442-2392 or customer care@berninifountains.com

You have now completed the disassembly portion of the Battery Conversion Kit. Proceed to the next section to start the assembly portion of the Battery Conversion Kit.

Step 2: Fountain Reassembly. Installing New ABCD Switch

Carefully set the Fountain Bowl on a level sturdy surface for reassembly.



Step 1: Feed the new ABCD Switch Cord into the base through the switch hole. Feed cord in all the way until you can see it through the battery cover opening.



Step 2: Pull all the slack out of the cord and guide the switch housing into the switch hole in the base of the fountain.



Step 3: Firmly press the ABCD switch into the housing until you feel a snap this means that the ABCD switch has seated into the fountain base.

Note: This will not required an excessive amount of force.

Step 2 Cont.: Installing The Large Bowl



Step 1: Make sure to place the base of your fountain on a flat, firm surface.

NOTE: Please refer to your Fountain's Instructions for information on the bowl locking system.



Step 2: Apply downward pressure to the bottom of the base by stepping on the edge of the bottom of the base to prevent the base from turning.

Connect the large bowl to the base.



Step 3: Turn the large bowl a quarter turn clockwise to lock it into place.

Remember! If you ever need help, you can contact our customer care at: 619-442-2392 or customer care@berninifountains.com

Step 2 Cont.: Fountain Reassembly

Installing Fountain Bowl

Carefully lift off the Self-Watering Garden Feature as to not damage any plants or flowers that may have been planted in the Self-Watering Garden Feature .



For the next step, the fountain bowl will install into the middle of the large bowl. Rest the fountain bowl on the side of the large bowl as pictured above.

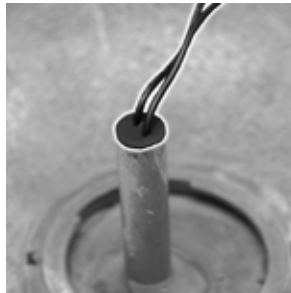


Step 1: Inside of the Fountain Bowl, there are two cords that will be connected to the connection port. Feed the cords with the black and red connectors down into the pipe. These will be connected to the connection port at a later step.



Step 2: Firmly press the plug into the pipe in the middle of the large bowl.

If you are having trouble pressing the plug into the pipe, you can rub a small amount of soapy water on the plug to help it slide into place.

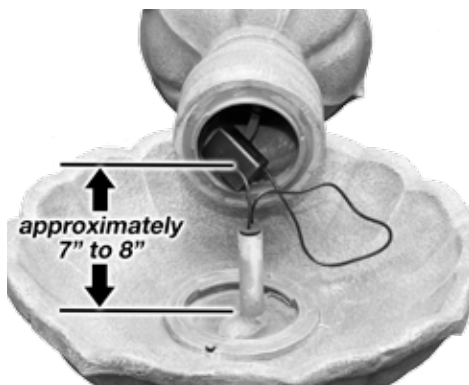
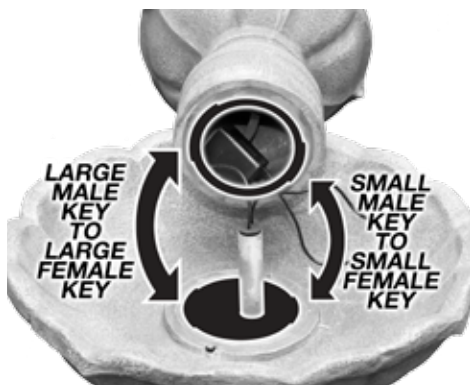


Step 3: To ensure that you have a good seal, make sure the plug fits snugly as pictured above.



NOTE: If the cables slip out of the rubber stopper, you can press the cables into the slot in the side of the rubber stopper. Maneuver the cord to fit snugly inside the hole that is located in the center of the rubber stopper.

Remember! If you ever need help, you can contact our customer care at: 619-442-2392 or customer care@bernini fountains.com



Step 4: Just like the large bowl and base, the fountain bowl uses a key system that will lock it to the middle of the large bowl.

Be sure to leave approximately 7 to 8 inches of slack in the cords coming from the water pump and the LED Light ring so the pump will sit on the bottom of the large bowl when the fountain bowl is assembled.



Step 5: Connect the fountain bowl to the large bowl and turn the fountain bowl about a quarter turn clockwise to lock it into place.



At this point, your fountain should look like the image on the left. Go to the next page for the next step to setup your new Bernini Fountain.

Remember! If you ever need help, you can contact our customer care at: 619-442-2392 or customer care@berninifountains.com

Step 2 Cont.: Fountain Reassembly Connecting The Battery



Step 1: In the open battery compartment, you will see three cords hanging down that you must connect to the connection port.

If you do not see the three cables inside the battery compartment, reach up into the base and gently pull them down until they are hanging inside the battery compartment as shown above.



Step 2: Using the cords from inside the base and the cord from the battery, connect the color coded cords to their corresponding receptacles on the connection port.

Use the image below for more help on connecting the battery.

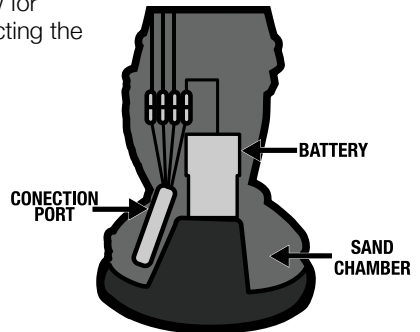


Step 3: Place your connection port inside the designated angled area located at the back of your fountain base. (See illustration on below)

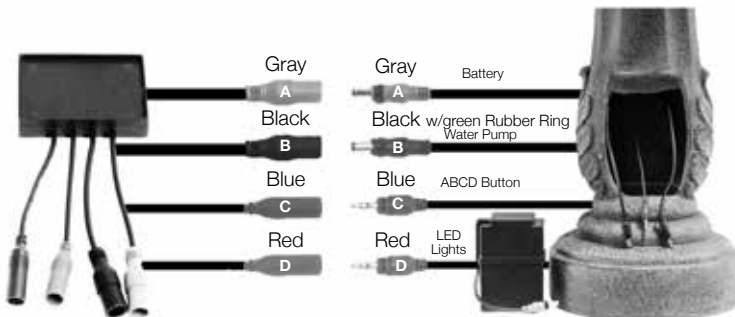


Step 4: Place the battery inside of the compartment in front of the connection port. (See illustration)

DO NOT PLACE BATTERY UPSIDE DOWN INSIDE OF BATTERY COMPARTMENT.



NOTE: USE CAUTION WHEN PLACING BATTERY INSIDE THE COMPARTMENT, DUE TO THE MANUFACTURING PROCESS THERE MIGHT BE SHARP EDGES.



Remember! If you ever need help, you can contact our customer care at: 619-442-2392 or customer care@bernini fountains.com

Step 3: Operation Of Your Fountain

Fill Your Fountain

Fill the fountain tier until water pours over the spouts. Then fill the large bowl until the water is about 1 inch (2.5 centimeters) from the top of the bowl.

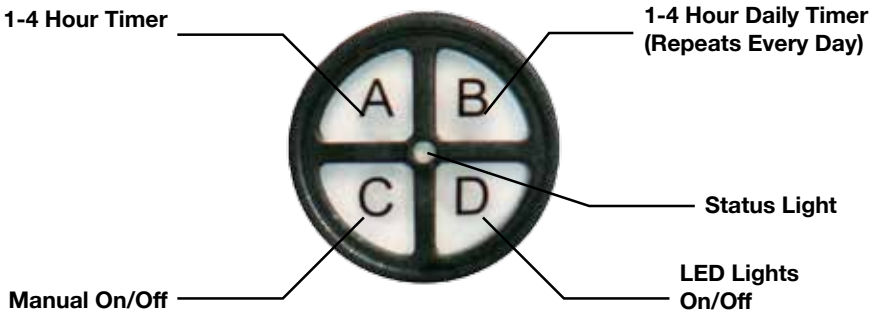
After you have filled your fountain, grab both sides of the large bowl and quickly shake your fountain for ten seconds. This is to dislodge any air bubbles that may be caught in your water pump. Press the C button once to turn your fountain on. Water should be flowing from the top of your fountain. If water is not flowing, press the C button once more to turn your fountain off, and repeat the step above.

IF YOUR FOUNTAIN IS MAKING A LOUD NOISE, DON'T PANIC!

This just means that there is air bubbles stuck in the water pump. Your pump will not be harmed, and you can easily fix this issue. You can try priming the fountain again by repeating the steps above, however, if the problem still persists, you can find the solution on page 14.

Operating Your Fountain

The on-board control panel is located towards the top of the base, just below the large bowl. See the diagram below to see how the all-new on-board controls work for your Bernini™ Fountain.



BUTTON	DESCRIPTION
A (1-4 Hour Timer)	<p>Runs the fountain for 1-4 hours with automatic shut off.</p> <p>One hour operation: press the A button once for your fountain to turn on with an automatic shut-off after one hour of operation.</p> <p>Two hour operation: press the A button twice and your fountain will automatically shut-off after two hours of operation.</p>

BUTTON	DESCRIPTION
<p>A (1-4 Hour Timer) (continued)</p>	<p>Three hour operation: press the A button three times and your fountain will automatically shut-off after three hours of operation.</p> <p>Four hour operation: press the A button four times and your fountain will automatically shut-off after four hours of operation.</p> <p>How To Use This Function:</p> <ol style="list-style-type: none"> 1. Press the A button one, two, three or four times to turn your fountain on for the desired automatic run time. 2. The Status Light will blink once for each hour you have selected to confirm your fountain's 1-4 Hour Timer, up to four hours. 3. At the end of the desired interval, your fountain will automatically turn off.
<p>B (1-4 Hour Daily Timer)</p>	<p>This function is the same as the 1-4 Hour Timer (button A) except with the added feature of automatically turning your fountain on at the same time the next day for the interval you selected.</p> <p>One hour operation: press the B button once for your fountain to turn on with an automatic shut-off after one hour of operation. This will repeat daily at the same time each day.</p> <p>Two hour operation: press the B button twice and your fountain will automatically shut-off after two hours of operation and repeat daily at the same time.</p> <p>Three hour operation: press the B button three times and your fountain will automatically shut-off after three hours of operation and repeat daily at the same time.</p> <p>Four hour operation: press the B button four times and your fountain will automatically shut-off after four hours of operation and repeat daily at the same time.</p> <p>How To Use This Function:</p> <ol style="list-style-type: none"> 1. Select the amount of time you would like the fountain to run by pressing the B button one, two, three or four times. 2. Your fountain will then run for the selected amount of time and at the end of the selected duration it will automatically turn off. Then your fountain will automatically turn on at the same time the next day for the run time duration you selected.

BUTTON	DESCRIPTION
B (1-4 Hour Daily Timer) <i>(continued)</i>	1. If you turn the LED lights on while using the 1-4 Hour Daily Timer function, the lights will automatically turn on with your fountain and turn off at the end of the selected interval. Example: If you turn on your fountain, choose a two hour run time by pressing the B button twice at 5pm, your fountain will turn off at 7pm and turn on again the next day at 5pm and run for two hours automatically.
C (Manual On/Off)	Turns the fountain on and off without any timer. Can be used when extended run times are desired. Note: Fountain will run until the battery loses its charge.
D (LED Lights On/Off)	Turns LED light feature on and off manually. LED Light features will automatically turn on or off whenever your fountain automatically or manually turns on or shuts off (including any timer setting)
Status Light	Status light will blink for the number hours you have selected when using the timer functions (buttons A and B).



You can now try your Bernini™ fountain to see if everything is working correctly! Turn your fountain on and if you see water flowing from the outlet in the middle of the fountain tier. **If water is not flowing, try priming the water pump, instructions are on page 14.**

Remember! If you ever need help, you can contact our customer care at: **619-442-2392 or customer care@berninifountains.com**

Troubleshooting & Maintenance:

Recharging The Battery

If you connect your battery to the charger before you plug into your outlet, the charger's light will glow a solid green to signify connection to the battery. Once plugged into the outlet, the light will glow a solid red until charged. Then it will turn green.



Begin by disconnecting the battery from the Connection Port and remove from the base of your fountain.

Step 1: Plug the battery charger into an electrical wall outlet.



Step 2: Take the gray cord that is connected to your battery and plug it into battery charger cord. While the battery is charging, the light on the charger will be solid red.



Step 3: Charge the battery for approximately 12-14 hours. When the battery is reaching its fully charged capacity, the light will blink for several minutes. Once the light is a solid green, the battery is at its full charge. At this point, you can detach the battery from the charger and plug the battery into your fountain.

NOTE: If the charger has not turned green after approximately 12-18 hours, you may need to charge for approximately 5 more hours.

IMPORTANT

DO NOT CHARGE ON COUNTER TOPS, CARPETS OR OTHER FINISHED SURFACES. IT IS RECOMMENDED THAT THE BATTERY BE PLACED ON A CONCRETE SURFACE WHILE CHARGING.

Remember! If you ever need help, you can contact our customer care at: 619-442-2392 or customer care@berninifountains.com

Is your fountain making a loud noise or do you not see water flowing?

Try priming the water pump.

If you find the water pump is running, but water is not flowing from your fountain, or you hear a loud grinding noise coming from your fountain, not to worry, you can try priming the water pump:

Begin by turning your fountain off. Firmly grasp onto the two sides of the large bowl. Agitate the water by quickly shaking the fountain back and forth for about five seconds. Stabilize your fountain and press the B Button to turn your fountain On.

If the problem still persists, repeat previous step 2 - 3 times. This helps dislodge any air bubbles in your pump that may be causing the problem.

If the problem still persists, try the method below:

Before beginning, remove any decorative tops from that may be on your fountain.

Remove the fountain bowl. You can now rest the fountain bowl on its side.

Now detach the water pump from the feeder tube inside the fountain bowl.

When removing the water pump, use caution when pulling the pump from the feeder tube. Pinch the bottom of the feeder tube close to the pump with one hand and then pull the water pump from the feeder tube with your other hand.



Step 1: Submerge the water pump into the water inside the large bowl and lightly shake the pump underwater to release air bubbles inside the vents on the water pump.



Step 2: Turn the fountain on and you should see water flowing from the pump. Let the pump run for about ten seconds and then turn your fountain off.



Step 3: Reconnect the water pump to the feeder tube inside the Enchanted Maiden Topper and reattach the Enchanted Maiden Topper to the large bowl.

Remember! If you ever need help, you can contact our customer care at: 619-442-2392 or customer care@berninifountains.com

BERNINITM
F O U N T A I N S

Santee, California 92071

World Wide Patents Pending

Email: customer care@berninifountains.com

On the web: www.berninifountains.com

Facebook: [berninifountains](https://www.facebook.com/berninifountains) Twitter: [@yrdllc](https://twitter.com/yrdllc)

© Yeiser Research & Development, LLC; 2015. All rights reserved.

Made in China