

## CONTENTS:



Assembled Fountain



Fountain Ball



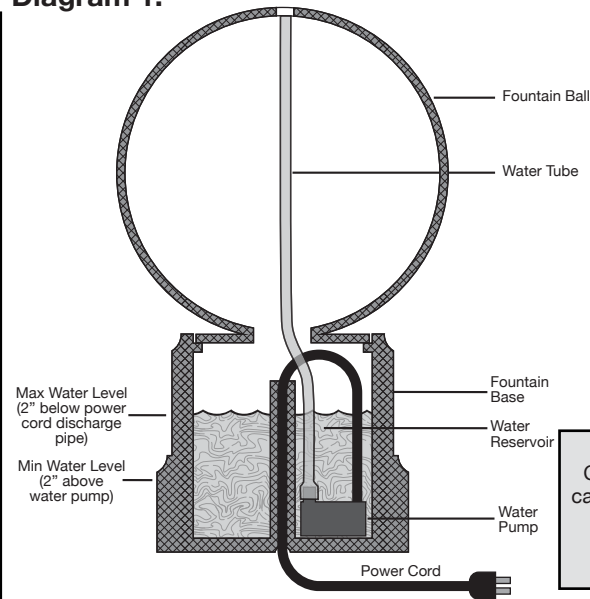
Water Pump



Fountain Base

Please note, images of parts are not to scale with one another.

## Diagram 1:



## 1.

### Pre Assembly Preparation:

- Note:** The Catania Fountain is designed for easy assembly but the fountain is heavy. Please use caution and it is recommended to use 2 people when assembling, lifting or moving fountain.
- Prior to assembly take time to find a suitable location for your fountain and make sure to place the Base of your Fountain on a flat, firm surface.
- Use Diagram 1 for reference on part names, connecting and how all the individual parts fit together for this fountain.
- Use all electrical safety precautions, always use properly grounded outlets. Please make sure that the electrical plug is dry and clean before inserting into the outlet. Never remove the ground pin from the electrical plug. Always unplug before filling with water or servicing your fountain.
- Due to evaporation check and fill water level periodically.

### Need Help?

Call us for assistance at: +1 (619) 449-2392 or you can email us at: [customer@berninifountains.com](mailto:customer@berninifountains.com)  
Our Customer Care Department is available:  
Monday - Friday 8:30am to 4:00pm PST  
11:30am - 7:00pm EST

## 2. Assembly



Figure 1



Figure 2



Figure 3



Figure 4



Figure 5

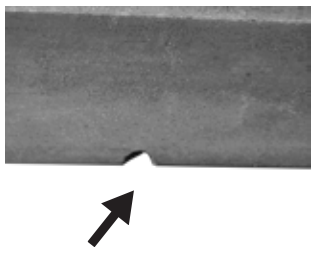


Figure 6

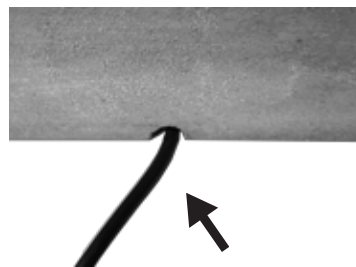


Figure 7



Figure 8



Figure 9



Figure 10

- Prior to assembly take time to find a suitable location for your fountain and make sure to place the Base of your Fountain on a flat, firm surface (Figure 1).
- Pass the cord from the pump down the pipe located in the middle of the reservoir (Figure 2 and 3). Place the water pump in the reservoir (Figure 4).
- Find notch on bottom of base (Figure 6). Make sure to place the water pump electrical cord into this notch (Figure 7). Ensure cord is not pinched, which could cause an electrical short.
- Fill the fountain reservoir with water (Figure 8). Water level must be about 2 inch above the Water Pump and about 2" below power cord discharge pipe. Due to evaporation check and fill water level periodically.
- Have a second person assist and set the Fountain Ball on the side of the base (Figure 9) while you locate the tubing inside the Fountain Ball and attach it to the water pump (Figure 4 & 5). Ensure pump is sitting on the bottom of the reservoir and not hanging, this can cause the water pump to be out of the water and cause pump damage. While the Water pump is submerged under water shake the water pump to remove any air bubbles that may be present inside the water pump housing. Lower the Fountain Ball into place on the reservoir (Figure 10).
- Plug in your fountain and enjoy.

## 3.

### OPERATING YOUR FOUNTAIN:

**Turn on/plug in Fountain:** If having trouble with the water flowing evenly out of the sphere, or in the event you need to level the surface of your fountain, you can use shims to even out the water flow. To use shims, place the shim(s) underneath the base opposite the side that that is not flowing evenly.

**Water Level:** Due to evaporation, clean water must be added periodically. You can use a funnel to add water or you can use help to lift up or tilt the Fountain Ball and add water. Water level must be maintained between 2" above the Water Pump and 2" below power cord discharge pipe. Failing to do so could cause the water pump to run dry, resulting in a damaged pump. Damage to the water pump due to an inadequate water level in the fountain base will void the limited warranty.

## 4. Troubleshooting

### Troubleshooting Guide

#### PRIMING THE WATER PUMP

If you find the Water Pump is running, but water is not flowing from your Fountain, you can try priming the Water Pump:

Turn off/unplug Fountain, have a second person assist and set the Fountain Ball on the side of the base or set carefully nearby. While the Water Pump is submerged under water, shake the water pump for 10 seconds to remove any air bubbles that may be present inside the water pump housing. Turn on/plug in your Fountain, water should be flowing from the pump. If water is not flowing, Turn off/unplug and repeat the step above. Once water is flowing, lower the Fountain Ball into place on the reservoir.

#### WATER PUMP CONNECTION

If your Water Pump becomes disconnected from the Water Tube inside of the Fountain, go to the Assembly Section to reconnect the Water Pump.

PROBLEM	SOLUTION
<b>Water Not Flowing</b>	Check power to pump: Check Power Source.
	Pump is on but no water flow: Check water level.
	Pump is on but no water flow: Check pump is free of debris, kinks or obstructions. See Care And Maintenance Section.
	Pump is on but no water flow: Check tube is connected properly. See Assembly Section.
<b>Low Water Flow</b>	Check power to pump: Check Power Source.
	Pump is on but low water flow: Check pump is free of debris, kinks or obstructions. See Care And Maintenance Section.
	Pump is on but low water flow: Check water level. Air in pump: See Priming The Water Pump Section.
<b>Loud Sound</b>	Loud sound and weak flow: Air in pump: See Priming The Water Pump Section.
	Loud sound and weak flow: Check pump is free of debris, kinks or obstructions. See Care And Maintenance Section.
<b>Suddenly Stops</b>	Pump suddenly stops: Check pump is free of debris, kinks or obstructions. See Care And Maintenance Section.

## 5. Care and Maintenance

**SHOULD THE UNIT APPEAR TO NOT BE WORKING PROPERLY, DO NOT REACH FOR, REMOVE, OR DISASSEMBLE THE PUMP BEFORE YOU DISCONNECT THE POWER.**

#### CLEANING YOUR FOUNTAIN

In order to keep your Fountain in tip-top shape and for a prolonged life, it is best if your Fountain and the reservoir are cleaned periodically. To clean your Fountain, drain of all water and disassemble. Use a mild soap and a soft cloth to clean the parts of your Fountain.

#### COLD STORAGE

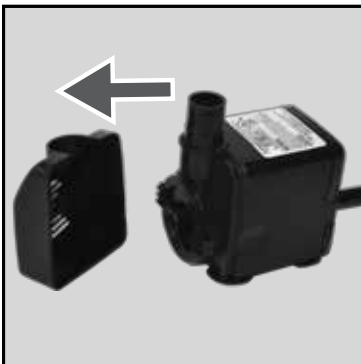
Turn power off/unplug, disassemble, clean and dry the Fountain of all water. For long term storage bring Fountain indoors. (Now is a great time to clean the pump to remove any debris that may have accumulated throughout the year).

#### CLEANING THE WATER PUMP'S PARTS

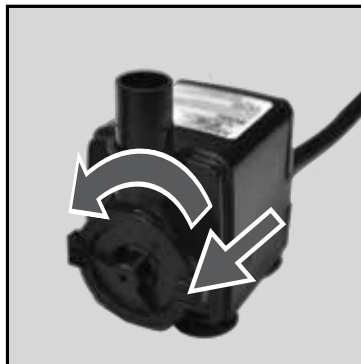
The impeller inside of the Water Pump is what pushes water up through your Fountain, allowing you to enjoy the soothing sounds and wonderful sights of your Fountain. After long periods of usage, this part will need to be cleaned to make sure your Fountain runs optimally.

- Step 1: Remove the front panel of the Water Pump by grabbing the sides of the front panel and pulling it off the unit.
- Step 2: Remove the impeller chamber cover. Twist counterclockwise and pull off. This is tightly fitted but will come off.
- Step 3: Remove the impeller from its chamber. The impeller is magnetized and may require tweezers to remove.
- Step 4: Rinse the impeller until all debris has been removed.
- Step 5: Re assemble in reverse order.

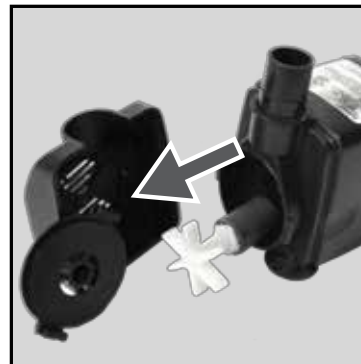
**NEVER REMOVE THE GROUND PIN FROM THE ELECTRICAL PLUG. FOR YOUR PROTECTION, ALWAYS UNPLUG THE PUMP UNIT FROM ITS POWER SOURCE BEFORE INSTALLING OR SERVICING YOUR FOUNTAIN.**



Step 1



Step 2



Step 3



Step 4

#### LIMITED ONE YEAR WARRANTY

This warranty gives you specific legal rights and you may also have other rights which vary from state to state. This product has a one year limited warranty on all materials and workmanship. Bernini® warrants the original purchaser of this product that the product will be free from manufacturing defects in workmanship and material for a period of one (1) year from the date of original purchase. If within one (1) year this product fails due to defect in material or workmanship, Bernini® will repair, replace or supply any defective part at their option. The purchaser must contact Bernini® and provide a description of the defective part, including digital pictures if requested, with this original purchase documentation as validation of warranty coverage. This warranty does not cover or apply to: (a) damage to the product due to misuse, mishandling, and abuse, (b) products not used in accordance with instructions, (c) product not assembled or installed according to instructions, and (d) normal wear and tear. Call us for assistance at +1 (619) 449-2392 or you can email or mail us at: 9545 Pathway Street, Santee, CA 92071, email us at: [customercare@berninifountains.com](mailto:customercare@berninifountains.com), or via US Mail 9545 Pathway Street, Santee, CA., 92071. Our Customer Care Department is available: Monday - Friday 8:30am to 4:00pm PST / 11:30am - 7:00pm EST

#### Please read first before returning:

Please call us for assistance at 1-619-449-2392 or email us at [customercare@berninifountains.com](mailto:customercare@berninifountains.com). Our Customer Care Department is available: Monday - Friday 8:30am to 4:00pm PST, 11:30am to 7:00pm EST. If you have any questions regarding assembly, parts, or operation, please visit our website at [www.berninifountains.com](http://www.berninifountains.com). You will find instructional videos on how to assemble and operate your fountain and keeps you up to date on our newest products. You can also email us with any questions you have. This product comes with a one year limited warranty against materials and workmanship.