

### CONTENTS:



Bird Feeder



S Hook



Dancing Water Attachments



2x Perches

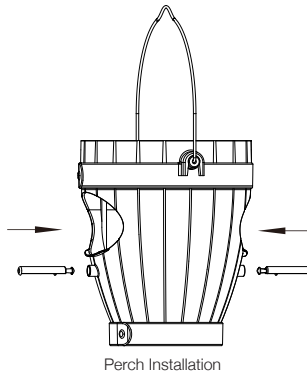
### INSTRUCTIONS:

1. Place Bird Feeder on a flat, level surface. Clip the S Hook to the handle.
2. Slide the Perches (2) into the holes on each side of the Bird Feeder. Slide in until the perch snaps in to place.
3. Fill bowl with water, the water level should just cover the water pump housing. (See fountain diagram). Fill Bird Seed compartment with seed.
4. Turn on your new Bernini™ Fountain and enjoy.

#### OPERATING YOUR BIRD FEEDER FOUNTAIN:

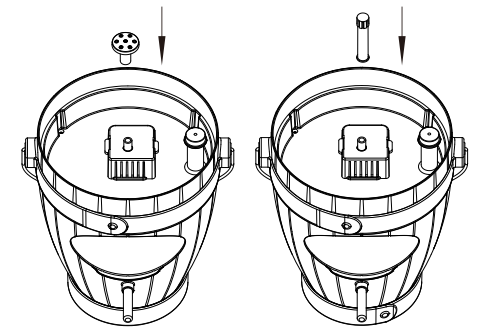
**Note: The switches are located on the bottom of the Bird Feeder Fountain (see fountain diagram).**

1. Switch Position On: Turns the fountain on and fountain runs until fountain is manually turned off. Unless fountain is turned off will run until batteries run down.
2. Switch Position Off: Turns Fountain Off
3. Switch Position Auto: Runs the fountain automatically in conjunction with the 1-4 hour timer switch. In position 1, runs for 1 hour with automatic shut off, turns on again daily at the same time. In position 2, runs for 2 hours with automatic shut off, turns on again daily at the same time. In position 3, runs for 3 hours with automatic shut off, turns on again daily at the same time. In position 4, runs for 4 hours with automatic shut off, turns on again daily at the same time.



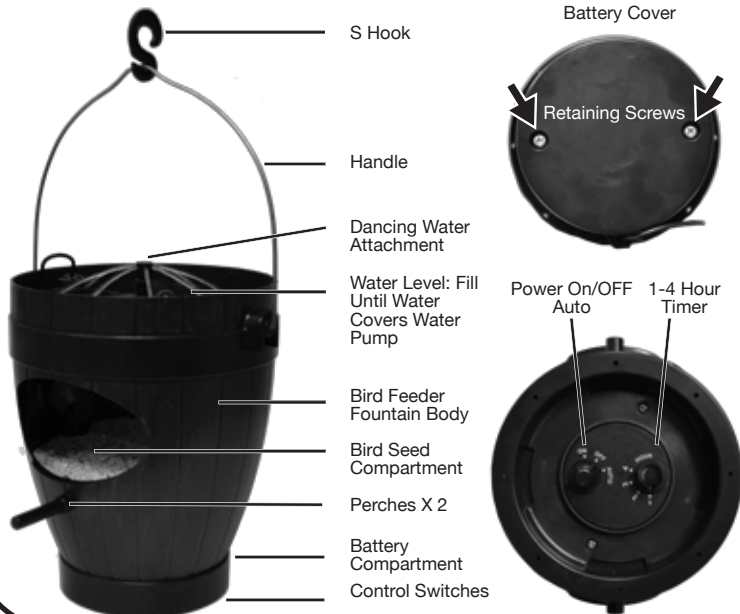
Perch Installation

**Need Help?**  
 Call us for assistance at:  
 +1 (619) 449-2392  
 or you can email us at:  
 customercare@berninifountains.com  
 Our Customer Care Department is available:  
 Monday - Friday 8:30am to 4:00pm PST  
 11:30am - 7:00pm EST



Dancing Water Attachment (OPTIONAL):  
 When fountain is not running, connect the Dancing Water Attachment to the outlet in the middle of the Bird Feeder Bowl.

### BIRD FEEDER FOUNTAIN DIAGRAM:



### INSERTING & CHANGING BATTERIES (4D CELL BATTERIES NOT INCLUDED):

1. Drain water if necessary, ensure fountain is not running and turn the Bird Feeder upside down for access to the battery compartment.
2. Turn battery housing counter clockwise and lift out battery assembly (Figure 1). Please note location of notch in the housing and battery cable retaining clip (Figure 1a).
3. Turn the Bird Feeder right side up and set battery compartment next to Bird Feeder housing (Figure 2).
4. Unscrew the battery retaining screws and lift out batteries paying attention to battery polarity (Figure 2a).
5. Insert 2 batteries with the (+) side facing up and 2 batteries with the (-) facing down (Figure 2b).
6. Re-Install the battery retaining screws (Figure 2a).
7. Re-insert the battery assembly into the Bird Feeder and turn clockwise (Figure 3). Be sure to align notch in the housing and battery cable retaining clip (Figure 1a).

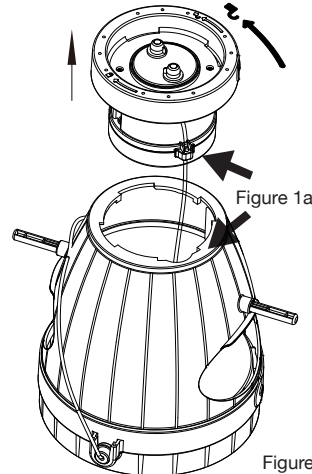


Figure 1

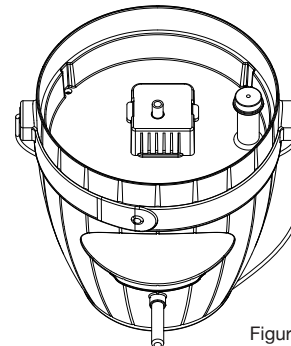


Figure 2

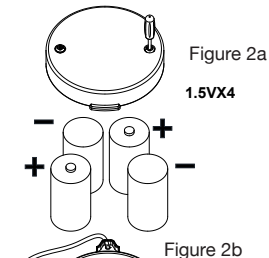


Figure 2a  
1.5VX4

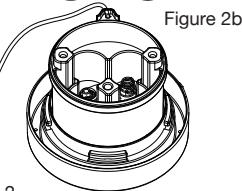


Figure 2b

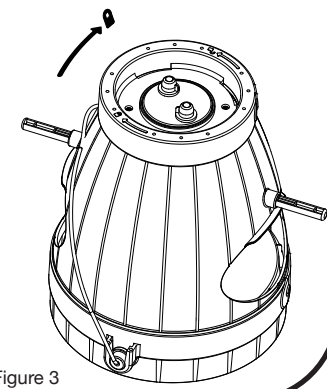
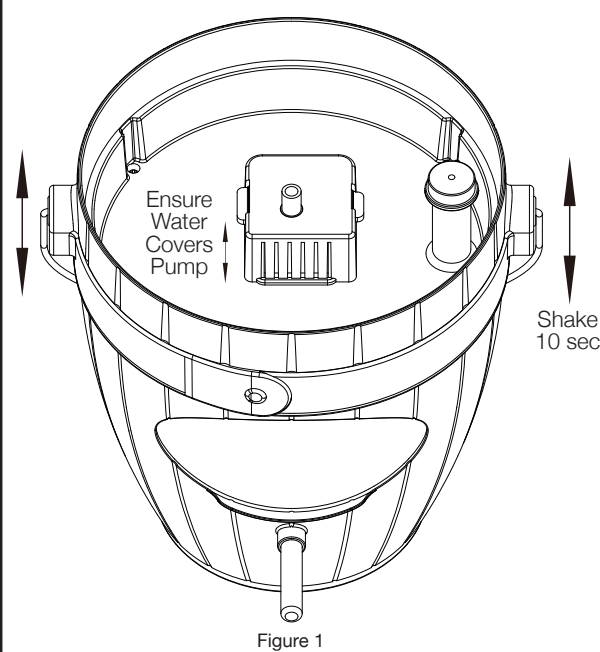


Figure 3

## TROUBLESHOOTING:



### PRIMING THE WATER PUMP

If you find the water pump is running, but water is not flowing from your fountain, you can try priming the water pump:  
 First ensure that the pump is completely submerged in water and grab the both sides of the Hanging Bird Feeder and shake gently for about 10 seconds, repeat as needed, this will help dislodge any air bubbles that may be in the air filter/pump assembly (Figure 1).

### Hanging The Bird Feeder:

Ensure that whatever is used to hang the Hanging Bird Feeder from is strong enough to adequately support the weight of birds and the Bird Feeder when filled with water and bird seed.

### Watering Requirements:

Due to evaporation, ensure that the Hanging Bird Feeder's water pump is always covered with water.

### High Wind:

Consider taking the Hanging Bird Feeder indoors during high wind conditions to prevent accidental breakage of the Bird Feeder.

### Debris:

Remove any debris that may fall into the Hanging Bird Feeder. The water pump performance may be impeded if the intake to the pump is blocked by any debris.

## CARE AND MAINTENANCE:

### CLEANING YOUR FOUNTAIN

In order to keep your fountain in tip-top shape and free of algae, you should clean your fountain every two months. To clean your fountain, drain of all water and disassemble. Use a mild soap and a soft cloth to clean the parts of your Bernini<sup>TM</sup> Fountain. Your fountain bowl will form a natural patina finish which with time may appear lighter or whiter than the original color. This is normal. **DO NOT SCRUB YOUR FOUNTAIN, AS THIS COULD CAUSE DAMAGE TO THE FINISH OF YOUR BERNINI<sup>TM</sup> FOUNTAIN.**

### COLD STORAGE

Drain the water from fountain prior to the first freeze of the season. Clean and dry the fountain of all water. Remove the batteries and the water pump and bring it indoors. (Now is a great time to clean the pump to remove any debris that may have accumulated throughout the year) Store in a warm dry area.

### CLEANING THE WATER PUMP'S PARTS

#### WATER PUMP AIR FILTERS

After about six weeks of usage, you may want to clean the water pump's filter and impeller to keep your Bernini<sup>TM</sup> Fountain in tip-top shape.

**Step 1:** Remove the water pump cover by grabbing the sides and pulling it up and off the unit.

**Step 2:** Remove the Air Filter from in front of the Water Pump.

**Step 3:** Rinse the Air Filter until all debris has been removed. Then replace the Air Filter back in front of the Water Pump and then replace the Water Pump's cover.

#### WATER PUMP IMPELLER

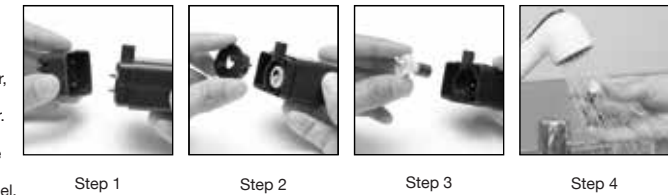
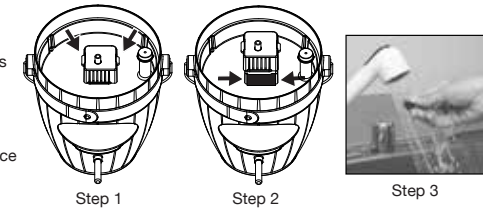
The impeller inside of the Water Pump is what pushes water up through your fountain, allowing you to enjoy the soothing sounds and wonderful sights of your Bernini<sup>TM</sup> Fountain. After long periods of usage, this part will need to be cleaned to make sure your fountain runs optimally.

**Step 1:** Remove the front of the Water Pump by grabbing the sides of the front panel and pull it off the unit.

**Step 2:** Remove the impeller chamber cover. This is tightly fitted on to the impeller chamber, but will come off.

**Step 3:** Remove the impeller from its chamber.

**Step 4:** Rinse the impeller until all debris has been removed. Then replace the impeller in the impeller chamber, put the impeller chamber back on and then replace the pump's front panel.



## IMPORTANT BATTERY SAFETY INSTRUCTIONS:

**PROPOSITION 65 WARNING:** Battery posts, terminals and related accessories contain lead and lead compounds, chemicals known to the State of California to cause cancer and reproductive harm. Wash hands after *Handling*.

**WARNING:** When using electric devices, basic safety precautions should always be followed to reduce the risk of fire, electric shock and personal injury, including the following:

**WARNING:** 1. Do not incinerate the battery even if it is severely damaged or is completely worn out. The battery can explode in a fire. Check with municipal codes in your area for possible special disposal Instructions.

2. If liquid leaks from the battery cell, discontinue use immediately and dispose of Properly.

3. Use only 4-1.5V D Cell Batteries..

4. Do not attempt to disassemble, remodel or destroy the battery, as it may cause battery leakage, fire, or bursting; and could also create sulfuric acid spills from the battery resulting in possible burns to person and damage to the immediate environment.

5. Never dispose of batteries in the garbage. Disposal of batteries in the garbage is unlawful under state and federal environmental laws and regulations. Always take used batteries to your local battery-recycling center.

## LIMITED ONE YEAR WARRANTY

This product has a one year limited warranty on all materials and workmanship. Bernini<sup>TM</sup> warrants the original purchaser of this product that the product will be free from manufacturing defects in workmanship and material for a period of one (1) year from the date of original purchase. If within one (1) year this product fails due to defect in material or workmanship, Bernini<sup>TM</sup> will repair, replace or supply any defective part at their option. The purchaser must contact Bernini<sup>TM</sup> and provide a description of the defective part, including digital pictures if requested, with this original purchase documentation as validation of warranty coverage. This warranty does not cover or apply to: (a) damage to the product due to misuse, mishandling, and abuse, (b) products not used in accordance with instructions, (c) product not assembled or installed according to instructions, and (d) normal wear and tear.

Call us for assistance at +1 (619) 449-2392 or you can email us at: [customercare@berninifountains.com](mailto:customercare@berninifountains.com)  
 Our Customer Care Department is available: Monday - Friday 8:30am to 4:00pm PST / 11:30am - 7:00pm EST

## Please read first before returning:

Please call us for assistance at 1-619-449-2392 or email us at [customercare@berninifountains.com](mailto:customercare@berninifountains.com). Our Customer Care Department is available: Monday - Friday 8:30am to 4:00pm PST, 11:30am to 7:00pm EST. If you have any questions regarding assembly, parts, or operation, please visit our website at [www.berninifountains.com](http://www.berninifountains.com). You will find instructional videos on how to assemble and operate your fountain, and keeps you up to date on our newest products. You can also email us with any questions you have. This product comes with a one year limited warranty against materials and workmanship.