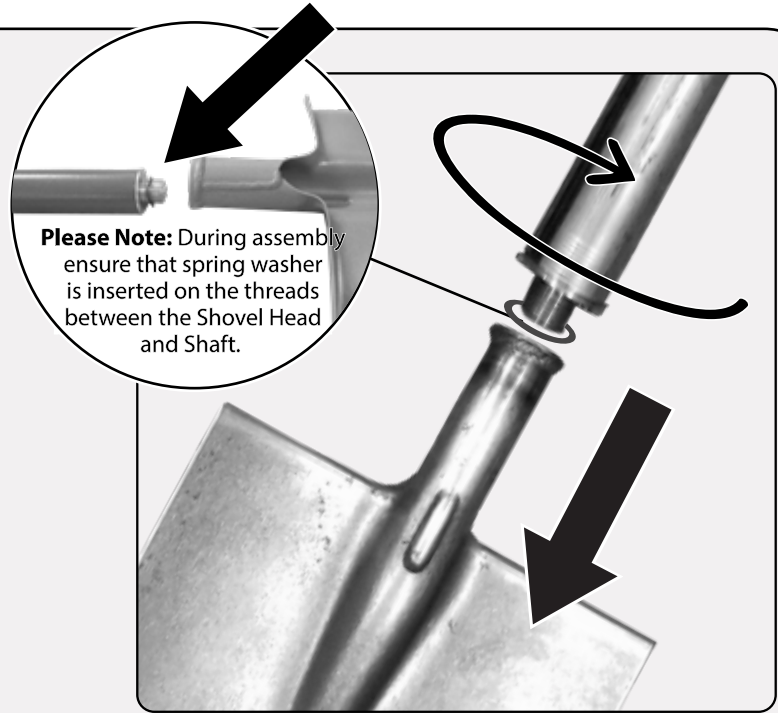


**PLEASE READ THESE INSTRUCTIONS COMPLETELY BEFORE ATTEMPTING TO ASSEMBLE/OPERATE YOUR NEW MIGHTY POWER SHOVEL™*

1. Assembling The Mighty Power Shovel™

Contents:



Please Note: During assembly ensure that spring washer is inserted on the threads between the Shovel Head and Shaft.

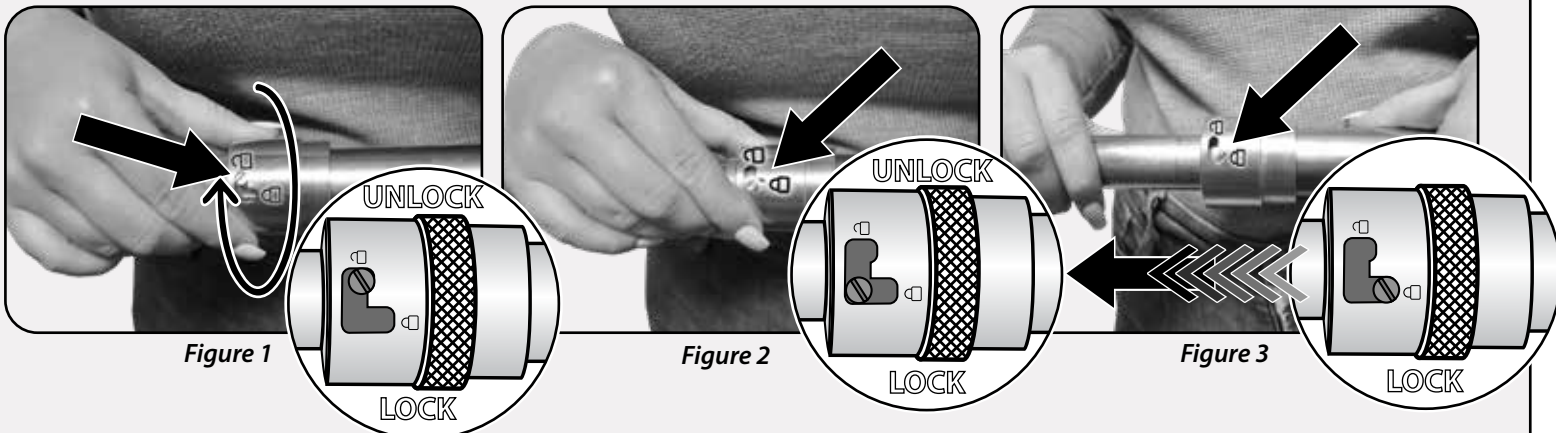
Step 1:

1. Remove the Shovel Head and Handle from the box, place the spring washer onto the handle threads and thread the end of the handle into the Shovel Head making sure to tighten the tube until secure (Step 1).

NOTE: If desired you can leave your Mighty Power Shovel™ assembled or you can disassemble your Mighty Power Shovel™ and store in the Mighty Power Shovel™ Storage Bag. But if you disassemble your Mighty Power Shovel™ please store the Spring Washer in a safe location (the original storage bag is a great place)

2. Extending your Mighty Power Shovel™

To extend your Bernini® Mighty Power Shovel™, locate the Lock Collar. There are two positions on the lock collar, Lock and Unlock, identified by the lock icon and unlock icon. On the Shovel Neck there are two indented grooves to select a chosen length.



Step 1: (Figure 1 Arrow) When shovel is facing down, push down on lock collar, while pushing down on lock collar, extend your shovel to desired length, release lock collar and shovel will auto lock into place.

Step 2: (Figure 2 Arrow) Choose one of the two notches, once desired length is selected move to step 3 (see Figure 5 A & B).

Step 3: (Figure 3 Arrow) Release lock collar and shovel will auto lock into place. **Pro Tip:** If the shovel is not locking into place rotate the handle of your shovel until the lock collar locks into place.

**PLEASE READ THESE INSTRUCTIONS COMPLETELY BEFORE ATTEMPTING TO ASSEMBLE/OPERATE YOUR NEW MIGHTY POWER SHOVEL™*

3. Using The Power Slide™ Function Of The Mighty Power Shovel™



Figure 4

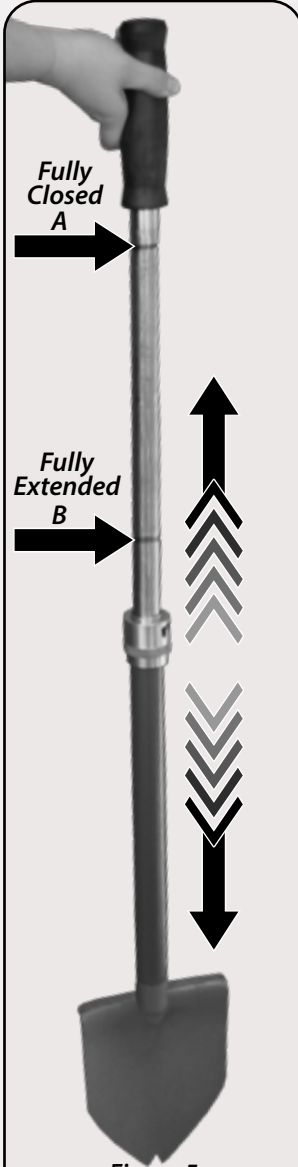


Figure 5



Figure 6

Pro Tip:
While hammering up and down, place foot on shovel footrest for better leverage to break up soil.

To use the Bernini® Mighty Power Shovel™ as a hammer, place the shovel head into the dirt, then push down and rotate the lock collar into the unlock position. Indicated by the unlock icon. Lastly pull the shovel neck up and down (as shown in figure 4 & 5) with force that you would usually use for a slide hammer until dirt is broken up.

LIMITED ONE YEAR WARRANTY

This warranty gives you specific legal rights and you may also have other rights which vary from state to state. This product has a one year limited warranty on all materials and workmanship. Bernini® warrants the original purchaser of this product that the product will be free from manufacturing defects in workmanship and material for a period of one (1) year from the date of original purchase. If within one (1) year this product fails due to defect in material or workmanship, Bernini® will repair, replace or supply any defective part(s) at their discretion. The purchaser must contact Bernini® and provide a description of the defective part, including digital pictures if requested, with this original purchase documentation as validation of warranty coverage. This warranty does not cover or apply to: (a) damage to the product due to misuse, mishandling, and abuse, (b) products not used in accordance with instructions, (c) product not assembled or installed according to instructions, and (d) normal wear and tear.

Contact Customer Service

+1 (619) 449-2392

customer@berninifountains.com

9545 Pathway Street, Santee, CA 92071

Customer Service hours: Monday - Friday 8:30am to 4:00pm PST / 11:30am to 7:00pm EST

On the web: www.berninifountains.com | Facebook and Pinterest: Bernini Fountain Company | Instagram: @berninifountains

World Wide Patents Pending | Made in China | Designed in the USA

001222 50BMPSI rev 2a US

January 2021© Yeiser Research & Development LLC and Bernini Fountains™ Fountains. All rights reserved. Trade names, product names and logos used in this document are the trademarks or registered trademarks of Yeiser Research & Development LLC, Santee, CA 92071