

Assembly and Instructions

SAFETY INFORMATION

Please read and understand this entire manual before attempting to assemble, operate or install the product.

CAUTION: As with any large container of water, fountains are to be used carefully with adult supervision. They are not intended to be used as “kid pools” and present a risk to small children and infants. Injury or accidental drowning could result. In addition, as with any electrical appliance, make sure the pump plug is dry before you plug it into an outlet, and make sure you are not standing in the water - electrical shock could result. Filled fountain weighs a considerable amount. Make sure your set-up area can support at least 300 lbs.

For best results – Install the fountain on a flat, level surface close to an electrical outlet.

Place the fountain in a location where any water spills or splashing will not reach any other electrical equipment or cause damage.

Choose an appropriate location before installing the fountain. **DO NOT** lift or push/drag the water basin to relocate the fountain when it’s filled with water. Empty the water basin before lifting.

Excessive weight or pressure on any of the fountain sections may cause it to tip or fall over. Keep pets and children away from any of the fountain sections.

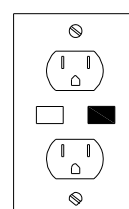
Some splashing may occur. To avoid injury from electrical shock, observe basic safety precautions and comply with the following instructions:

The pump on the fountain has no user serviceable parts. Only an authorized service representative should service the pump. Do not open the sealed pump housing as this may result in electrical shock. Refer to enclosed pump maintenance guide for cleaning.

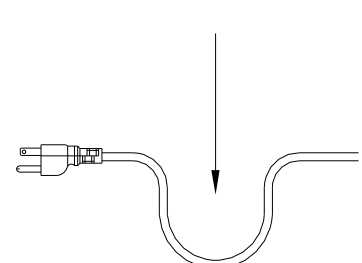
- Always unplug the pump from the electric outlet before cleaning and handling.
- Use with clean water only. Do not place it in other liquids. Do not allow the pump to run dry.
- An adult should supervise children when they are around the pump.
- Use the proper power source as indicated on the pump label.
- Equip the electrical power for the pump with a ground fault circuit interrupter (GFCI).
- Keep the fountain away from high temperatures or heat sources.
- Do not use the pump in water above 86°F.
- Disconnect the power cord from the outlet by holding the plug. Do not lift, carry, or pull the pump by the power cord.
- If the entire fountain falls into the water accidentally, turn off the circuit breaker immediately.
- If any leakage occurs around the pump housing, turn off the circuit breaker immediately and have the pump serviced by a registered technician.
- Do not operate the fountain if the pump has been dropped or has a damaged power cord or plug. Do not replace the power cord.
- Keep the plug dry. Do not expose the plug to water or steam. Do not use the pump in swimming pool or marine area.
- If the plug or the wall receptacle gets wet due to water dripping down the power cord or for any other reason, do not remove the plug from the wall outlet until the circuit breaker is turned off.

NOTE: Allow the pump power cord to hang at a lower level than the wall outlet to form a “drip loop.” This will help prevent water from dripping down the power cord and getting into the wall outlet.

GFCI



DRIP LOOP



- Do not expose the pump to direct sunlight or to low temperatures for any period of time.
- Use only a UL-approved extension cord of the correct rating to avoid overheating.
- Do not use attachments that are not provided by the manufacturer since they may cause an unsafe condition.
- Do not use the pump for anything other than its intended use.

ASSEMBLY INSTRUCTIONS

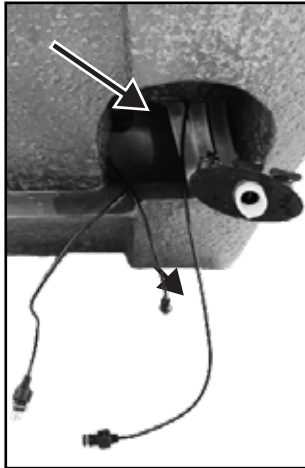


Figure 1

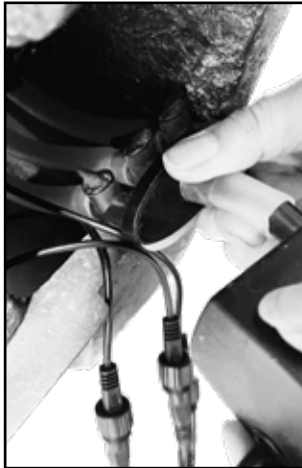


Figure 2

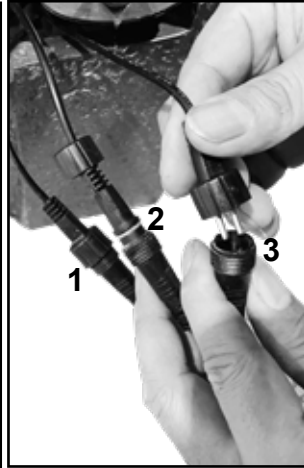


Figure 3

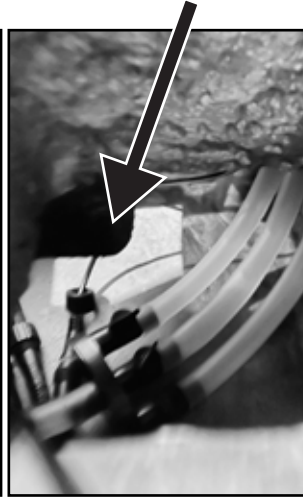


Figure 4

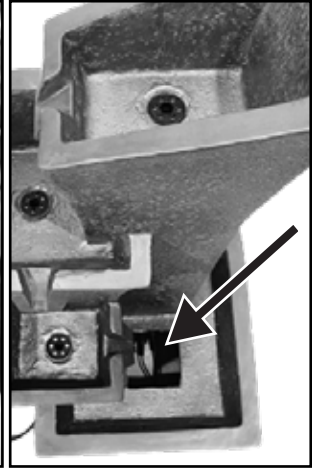


Figure 5

1. Pull the light cords and water tubes from the back of the fountain (Figure 1).
2. Connect the preassembled water hose 3-way adapter inside of the fountain to the pump (Figure 2).
3. Connect the three light cords to the sockets on the pump (Figure 3).
4. Connect the long cord from the pump to the transformer (Figure 6 & 7).
5. Insert the pump into the water tank, ensuring that the tubes are arranged neatly and do not bend or kink (Figure 4).
6. Gently pour water into the fountain, making sure the water completely submerges the pump (Figure 5, Black Arrow).
7. Plug into your local power supply.
8. There are three valves on the 3-way adapter that can be adjusted to control the flow of water to each spout as necessary (Figure 2).

CARE AND MAINTENANCE

- Check regularly that the water reservoir has sufficient water to cover the pump at all times. It will be necessary to check more frequently in warm or windy weather.
- Do not allow the pump to freeze. During cold spells, remove the pump from the water feature and place in a water-filled container in a frost-free position. DO NOT store the pump dry.
- Periodically it will be necessary to change the water and clean the water feature and reservoir. The frequency of this will depend on the weather and location of the water feature. The outside of the water feature can be cleaned using a soft cloth and clean water and the reservoir with a soft brush. A mild detergent can be used, but please note this will cause the water to foam and should be avoided unless strictly necessary.
- The pump rotor will require cleaning at approximately monthly intervals. A good indication will be if the water flow rate drops. Unplug the water feature, remove the pump from the water reservoir and disconnect the water pipe. Remove the filtering cover and pressure-casing from the front of pump body. Clean the rotor and housing in clean water using cotton buds. Reassemble the pump, reconnect the water pipe and reassemble the water feature.

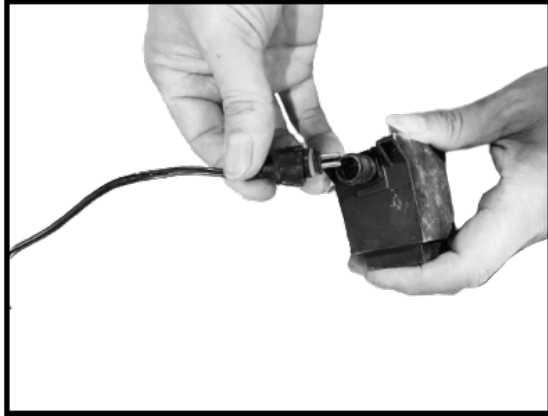


Figure 6



Figure 7

TROUBLESHOOTING

PROBLEM	POSSIBLE CAUSE	CORRECTIVE ACTION
Fountain is not pumping water.	<ol style="list-style-type: none"> 1. Pump is not covered with water. 2. Pump or fountain is blocked. 3. Pump is not secured correctly. 4. Pump is not electrically connected. 5. Pump may be “air locked.” 	<ol style="list-style-type: none"> 1. Add more water to the reservoir. 2. Disconnect fountain from power source, remove any obstruction, and clean bowl and tubing. 3. Disconnect fountain from power source, pour out any remaining water, and ensure the tubing in the reservoir is tightly secured to the pump outlet. 4. Check to make sure pump is plugged in and the outlet is working. 5. Plug and unplug the pump several times to clear any air that may have been trapped.

SAVE THESE INSTRUCTIONS - THIS MANUAL CONTAINS IMPORTANT SAFETY AND OPERATING INSTRUCTIONS FOR POWER UNITS.

LIMITED ONE YEAR WARRANTY

This warranty gives you specific legal rights and you may also have other rights which vary from state to state. This product has a one year limited warranty on all materials and workmanship. Bernini® warrants the original purchaser of this product that the product will be free from manufacturing defects in workmanship and material for a period of one (1) year from the date of original purchase. If within one (1) year this product fails due to defect in material or workmanship, Bernini® will repair, replace or supply any defective part at their discretion. The purchaser must contact Bernini® and provide a description of the defective part, including digital pictures if requested, with this original purchase documentation as validation of warranty coverage. This warranty does not cover or apply to: (a) damage to the product due to misuse, mishandling, and abuse, (b) products not used in accordance with instructions, (c) product not assembled or installed according to instructions, and (d) normal wear and tear. Call us for assistance at +1 (619) 449-2392 or you can email or mail us at: 9545 Pathway Street, Santee, CA 92071, customer@berninifountains.com, Our Customer Care Department is available: Monday - Friday 8:30am to 4:00pm PST / 11:30am - 7:00pm EST

Please read first before returning:

Please call us for assistance at 1-619-449-2392 or email us at customer@berninifountains.com. Our Customer Care Department is available: Monday - Friday 8:30am to 4:00pm PST, 11:30am to 7:00pm EST. If you have any questions regarding assembly, parts, or operation, please visit our website at www.berninifountains.com. You will find instructional videos on how to assemble and operate your fountain, and keeps you up to date on our newest products. You can also email us with any questions you have. This product comes with a one year limited warranty against materials and workmanship.