

BERNINI™

# BOSCONERO FOUNTAIN

---

OWNER'S MANUAL



---

2023

# BERNINI™

## THANK YOU FOR YOUR PURCHASE!

### Product Registration:

Bernini Fountains recommends you register your new fountain. You can register on-line at [berninifountains.com/register](http://berninifountains.com/register), by printing and mailing in a registration card available on-line from our website, by calling our customer care department at **1+ (619) 449-2392**, or by emailing us at [customercare@berninifountains.com](mailto:customercare@berninifountains.com). Failure to register your fountain will not diminish your warranty rights. However, registering your fountain will allow Bernini Fountains to better serve you with any of your customer care needs.

### FIRST THINGS FIRST:

Bernini Fountains is dedicated to our customers. We strive to make your customer care experience as pleasurable as possible. With that being said, there are always circumstances beyond our control when a fountain doesn't work or breaks under normal operating conditions. We think it's important that you know what you can expect from us. This is why we have a limited one year warranty on our fountains.



### HAS YOUR BERNINI EXPERIENCE LEFT YOU HAPPY?

Tell your friends, tag us and leave us a review! We would love to hear your feedback! Share your experience by writing comments and reviews on [berninifountains.com](http://berninifountains.com) or connect with us on social media!

**#BERNINFOUNTAINS**



### OR HAS SOMETHING LEFT YOU WANTING MORE?

We're sorry to hear that! Our friendly Customer Care Team is ready to assist you in any way possible to resolve any issues you may have, Monday - Friday 8:30am to 4:00pm PST, 11:30am to 7:00pm EST

**CALL US, EMAIL US, CHAT WITH US**



PHONE:  
1+ (619) 449-2392



EMAIL:  
[customercare@berninifountains.com](mailto:customercare@berninifountains.com)



WEB:  
[www.berninifountains.com](http://www.berninifountains.com)



FB: Bernini Fountain Company



PINTEREST: Bernini Fountain Company



INSTAGRAM:  
[@berninifountains](https://www.instagram.com/berninifountains)



TWITTER:  
[@bernydlic](https://twitter.com/bernydlic)

## PLEASE READ FIRST BEFORE RETURNING

- Please call us for assistance at 1+ (619) 449-2392 or email us at [customercare@berninifountains.com](mailto:customercare@berninifountains.com)
- Our Customer Care Department is available:  
Monday - Friday 8:30am to 4:00pm PST, 11:30am to 7:00pm EST
- If you have any questions regarding assembly, parts or operation, please visit our website at [www.berninifountains.com](http://www.berninifountains.com).
- At [berninifountains.com](http://berninifountains.com) you will find instructional videos on how to assemble and operate your fountain. In addition, you can also view our newest products.
- This product comes with a one year limited warranty against materials and workmanship, see page 18.
- Please review the list of accessories included with your Bernini™ Fountain on the next page. Please note, images of parts are not to scale with one another.

## About Bosconero:

---

A commune in the Metropolitan City of Turin in the Italian region Piedmont. Often overlooked in favor of hilltop towns and seaside villages, surrounded by some of the country's most dramatic mountain ranges and vistas.

# BERNINI™

---

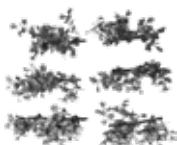
NOTES:

# PARTS

## PARTS FOR YOUR BERNINI™ FOUNTAIN



3-Long Faux  
Greenery



6-Short Faux  
Greenery



Large Bowl



Topper



Base



Dancing Water  
Attachments



Infinity Bowl



Battery  
Compartment, Water  
Tube & Water Pump



Leveling Shim

# CONTENTS

---

**Page:**

- 1.**            **STEP 1: FOUNTAIN BOWL INSTALLATION**
- 2.            Large Bowl Locking System
- 3.**            **STEP 2: FOUNTAIN TOPPER INSTALLATION**
- 4.            Installing The Topper
- 10.**          **STEP 3: BATTERY INSTALLATION**
- 6.            Inserting Batteries Into The Battery Compartment
- 7-8.        Installing Batteries
- 9.            Assembling Battery Compartment Housing & Cover
- 10.          Assembling The Water Pump & Tube To  
              Battery Compartment
- 10-11.      Changing Batteries
- 12.**          **STEP 4: SETTING UP YOUR FOUNTAIN**
- 13.          Fill Your Fountain
- 13-14.      Operating Your Fountain
- 15.          Dancing Water Attachments
- 16.**          **STEP 5: INFINITY POOL & FAUX GREENERY,  
              PLANTER & BIRD FEEDER**
- 17.          Infinity Pool
- 17.          Faux Greenery
- 18.          Setting Up As A Planter
- 18.          Setting Up As A Bird Feeder
- 19.**          **TROUBLESHOOTING AND MAINTENANCE**
- 19.          Water Pump Connection
- 20.          Priming the Water Pump
- 20.          Using Leveling Shims
- 20-21.      Cleaning your Fountain
- 21.          Cleaning The Bowl & Fountain Tower Drain Holes
- 21-22.      Cleaning Your Water Pumps Parts
- 22.          Cold Storage
- 23.          Troubleshooting Guide
- 25.          Limited Warranty information

# STEP 1

---

## FOUNTAIN BOWL INSTALLATION

You will need:



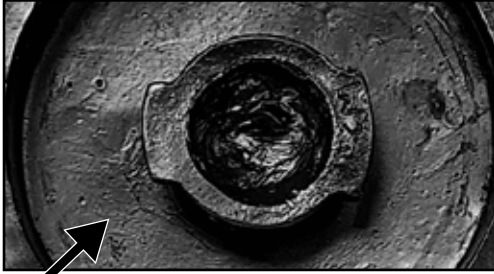
**Base**



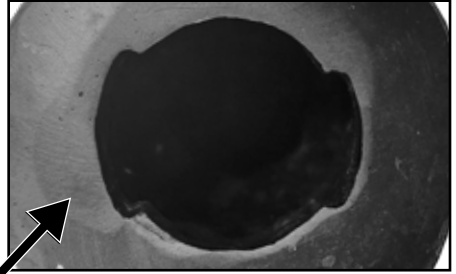
**Large Bowl**

## LARGE BOWL LOCKING SYSTEM

A look at how the Large Bowl locking system works on your Fountain.



Bottom of the Large Bowl

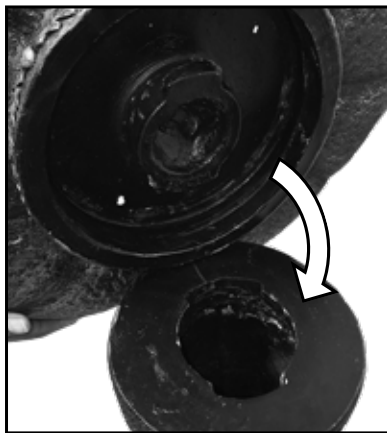


Top of the Base

Note: You will notice that there are two different sized tabs on the bottom of the Large Bowl and there are two corresponding grooves in the top of the Base. These tabs fit together and lock when turned clockwise.



**Step 1:** Be sure to place the base of your fountain on a flat, firm surface.



**Step 2:** Set the Large Bowl on the base. Screw the Large Bowl into the Base until snug, do not over-tighten.



At this point, your fountain should look like the image on the right.



GO TO THE NEXT PAGE TO CONTINUE WITH SETUP OF YOUR FOUNTAIN.





# STEP 2

---

## FOUNTAIN TOPPER INSTALLATION

You will need:

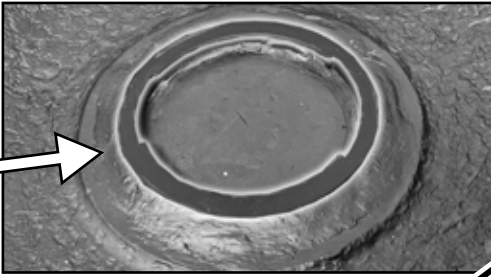


**Assembled Base &  
Large Bowl**



**Fountain  
Topper**

## INSTALLING THE TOPPER

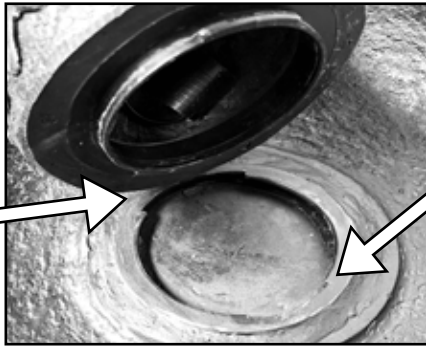


Inside of the Large Bowl



Bottom of the Topper

**Note:** Just as you installed the Large Bowl to the Base, you will notice that there are threads in the Bowl and there are corresponding threads on the bottom of the Topper. These threads fit together securely when tightened.



**Step 1:** Align and connect the Topper to the bowl. Turn the threads and turn clockwise to screw the Large Bowl and Topper together.



At this point, your fountain should look like the image above.



GO TO THE NEXT PAGE TO CONTINUE WITH SETUP OF YOUR FOUNTAIN.



# STEP 3

---

## BATTERY INSTALLATION

You will need:



**Fountain  
Assembled**



**Battery Compartment  
Water Tube & Water Pump**

**Items/Tools Required:  
(Not Included)**

- Philips Screwdriver
- 4 D Cell Batteries



# INSERTING BATTERIES INTO THE BATTERY COMPARTMENT



Figure 1a

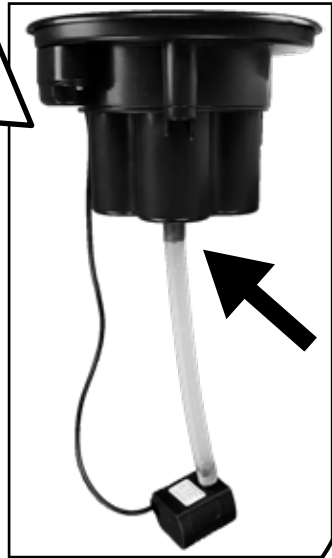


Figure 1b

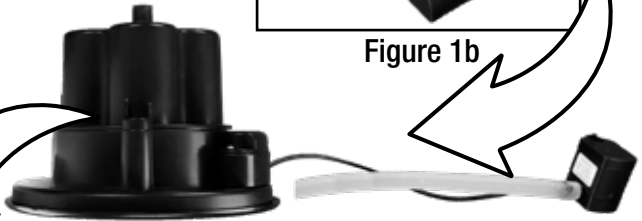


Figure 1c



Battery Compartment  
Retaining Screws X2

Figure 1d



---

## INSTALLING BATTERIES

**NOTE:** The Battery Housing utilizes screws that are captive in the Battery Housing. When they are loosened they will stay within the Battery Housing and will not come loose (Arrow A & B Figure 2c).

1. (If Battery Compartment & Water Pump are installed into the Topper) Lift out of the Topper (Figure 1a). Disconnect the Water Tube from the Battery Compartment (A Figure 1b&c).
2. Unscrew (counter clockwise) the Battery Compartment Screws and open cover (Figure 1d). Note: Cover fits tightly and may take some effort to separate. If screws continue to turn compartment is completely unscrewed.
3. Fountain requires 4 D batteries (Not Included). Insert x2 D Batteries with the (+) side facing up in Battery Compartment and x2 D Batteries with the (-) facing up in Battery Compartment (Figure 2a).

**NOTE:** Flat or negative side of battery will rest on springs.

4. Reinstall the Fountain Top by aligning the locating dowel in the Battery Compartment and Fountain Top (Figure 1e white arrow). Set the Battery Cover down onto the Battery Compartment ensuring the dowel sets into the alignment hole.
6. Apply pressure and tighten the Battery Cover Screws by turning clockwise.

**NOTE:** Pressure must be applied to the Battery Compartment while tightening the screws to assure the compartment is properly sealed. If needed, while holding battery compartment, place it upside down on an even surface to tighten screws (Figure 2a, 2b & 2c).

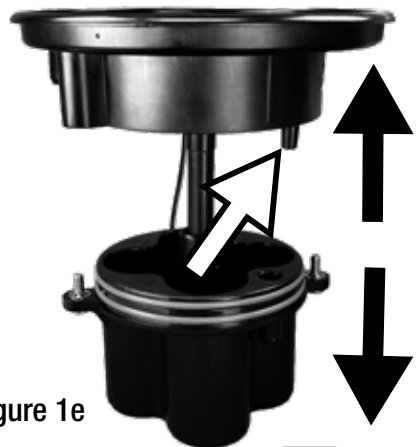
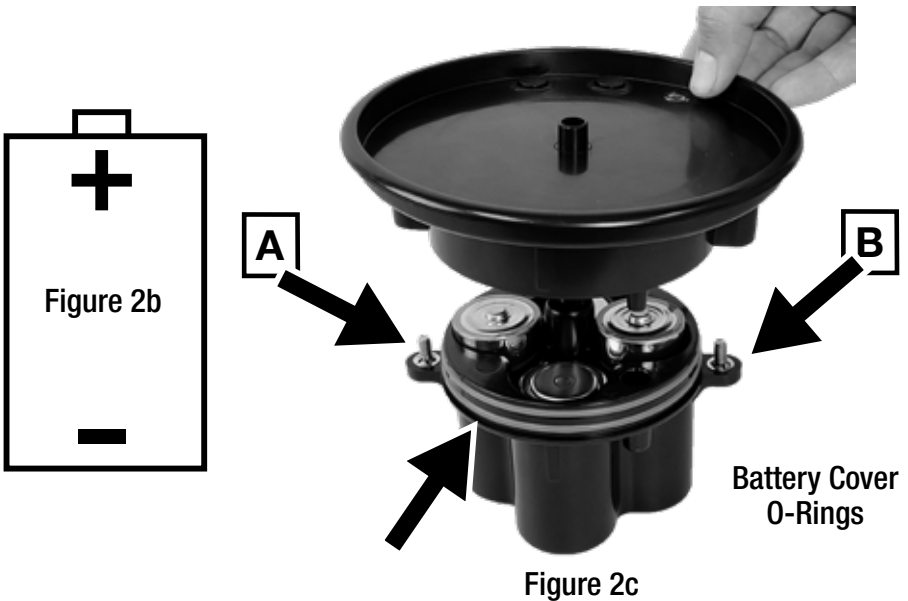
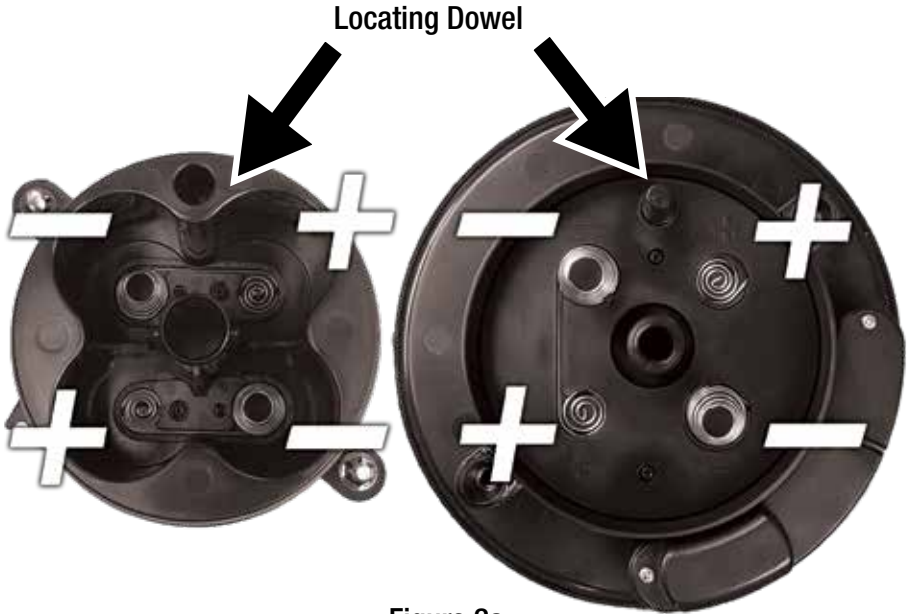


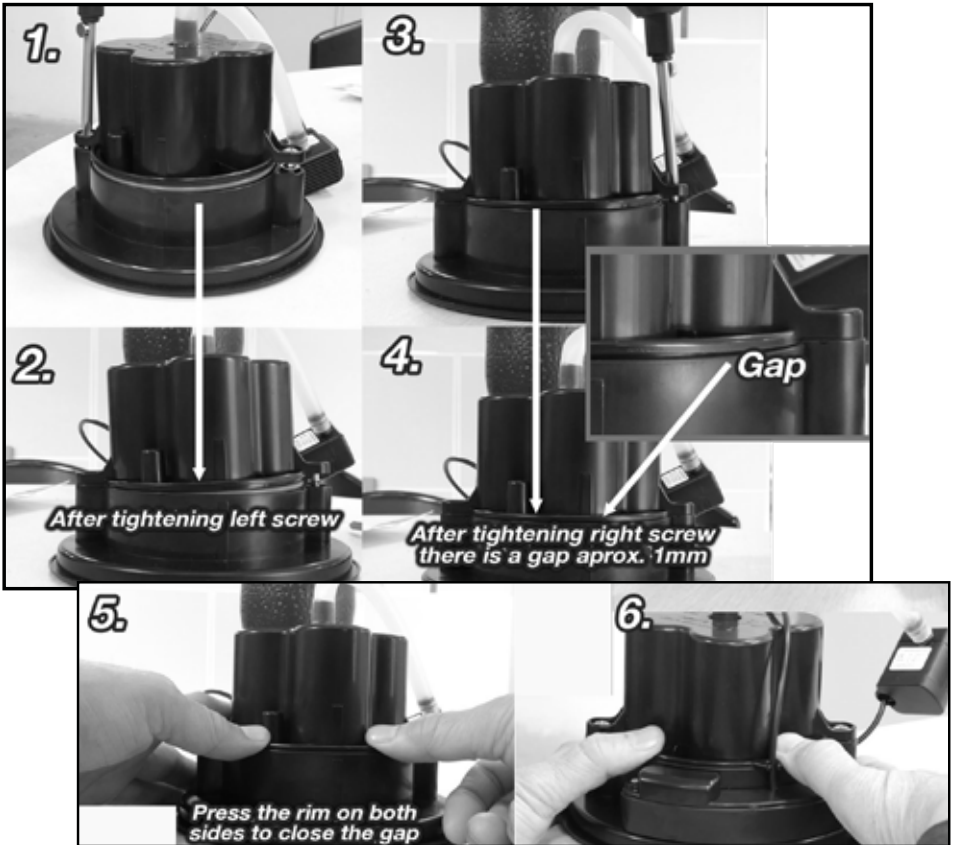
Figure 1e

---

## INSTALLING BATTERIES (CONTINUED)



## ASSEMBLING BATTERY COMPARTMENT HOUSING & COVER



1. Place Battery Cover on Battery Compartment Housing. Turn over assembled Battery unit and place on a flat, level surface. Using a Phillips screwdriver (not included) alternate tightening both screws down firmly.
2. After both screws have been tightened, you may notice a small gap between the Battery Cover and the Battery Compartment Housing.
3. Press down firmly on the bottom of the Battery Compartment Housing to help tighten the gap.
4. Re-tighten the screws (left screw first, right screw second) to close the gap between the Battery Cover and the Battery Compartment Housing.

---

## ASSEMBLING THE WATER PUMP & TUBE TO BATTERY COMPARTMENT

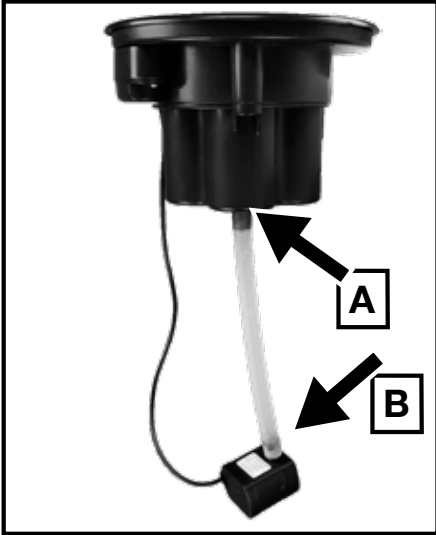


Figure 3a

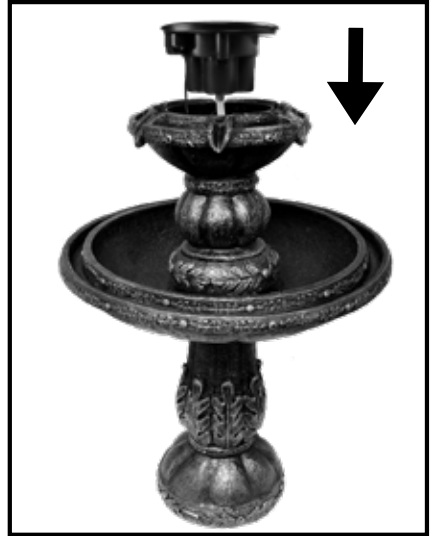


Figure 3b

1. Connect one side of the Water Tube to the Water Pump and the other end of the tube to the bottom side of the Battery Compartment (A & B of Figure 3a).
2. Lower the Battery Compartment and Water Pump into the Topper. Battery Compartment and Water Pump should be flush with Topper (Figure 3b).

## CHANGING BATTERIES

1. Remove any Dancing Water Attachment
2. Lift Battery Compartment and Water Pump out of the Fountain (Figure 4a).

**NOTE:** When changing batteries, ensure Battery Compartment and Water Pump are completely dry before opening Battery Compartment to prevent water from getting inside.



# CHANGING BATTERIES (CONTINUED)



Figure 4a

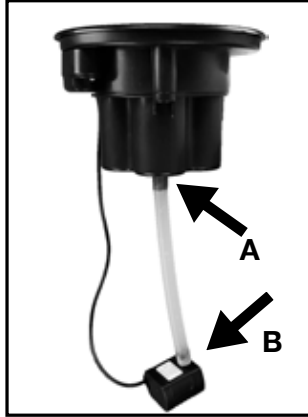


Figure 4b



Figure 4d

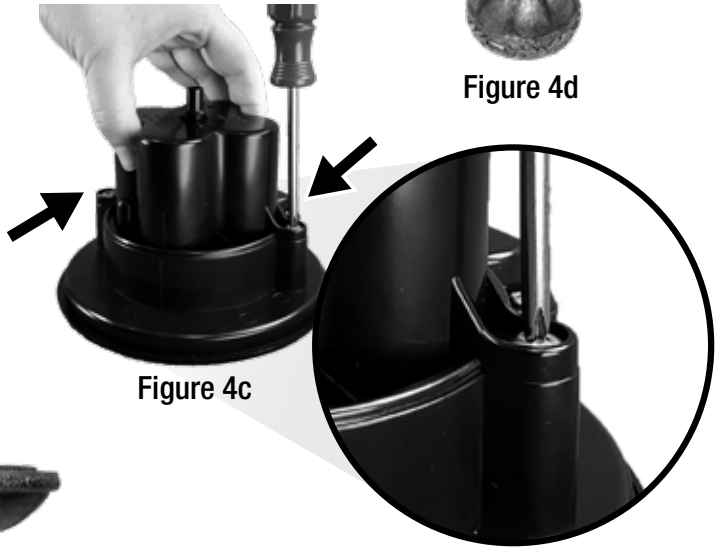


Figure 4c



At this point, your fountain should look like the image on the left. Go to the next page to continue setting up your new Fountain.



GO TO THE NEXT PAGE TO CONTINUE WITH SETUP OF YOUR FOUNTAIN.



# STEP 4

---

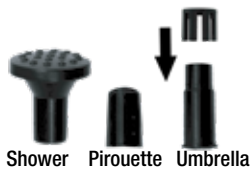
## SETTING UP YOUR FOUNTAIN

You will need:



Fountain Assembled

WATER TO  
FILL YOUR  
FOUNTAIN



Shower Pirouette Umbrella

**Dancing Water  
Attachments**

---

## FILL YOUR FOUNTAIN

- Fill the large bowl until the water is 1 inch (2.5 centimeters) from the top of the bowl.
- To dislodge any air bubbles from the pump, grab both sides of the large bowl and quickly shake your fountain for ten seconds.
- Press the button once to turn your fountain on. Water should be flowing from the top of your fountain.
- If water is not flowing, press the button once more to turn your fountain off and repeat the step above.

## OPERATING YOUR FOUNTAIN

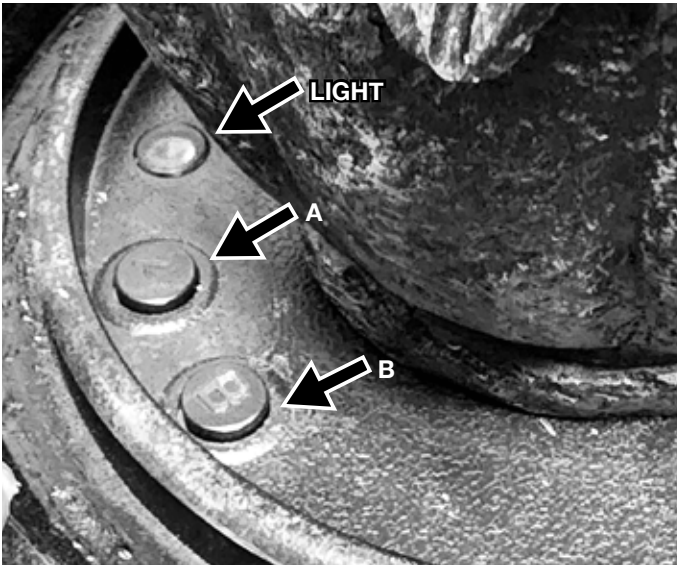


Figure 5

### Turn Fountain on and off:

- The A Button is the manual on and off button.
- **With the Fountain off, press the A button:** The fountain will run for a maximum of 6 hours or until the A button is pressed again which will shut the fountain off.

---

## OPERATING YOUR FOUNTAIN (CONTINUED)

### Programing The Fountain:

- **Press the A Button 2 times:** Clears out all programing.
- **Press the B Button 1 time:** Will program the fountain to run for 1 hour each day at the same time. The light (Figure 5), will flash once to confirm your selection.
- **Press the B Button 2 times:** Will program the fountain to run for 2 hours each day at the same time. The light (Figure 5), will flash twice to confirm your selection.
- **Press the B Button 3 times:** Will program the fountain to run for 3 hours each day at the same time. The light (Figure 5), will flash 3 times to confirm your selection.
- **Press the B Button 4 times:** Will program the fountain to run for 4 hours each day at the same time. The light (Figure 5), will flash 4 times to confirm your selection.
- **Pressing the B Button more than 4 times:** Pressing the B Button more than 4 time will start this process over.

### Reset/Change the timer:

- Press the A button twice to clear out any timers programmed into the B Button. If you want to reset the timer, set the B Button Programing as in the “Programing The Fountain” Section above (Figure 5).



## DANCING WATER ATTACHMENTS

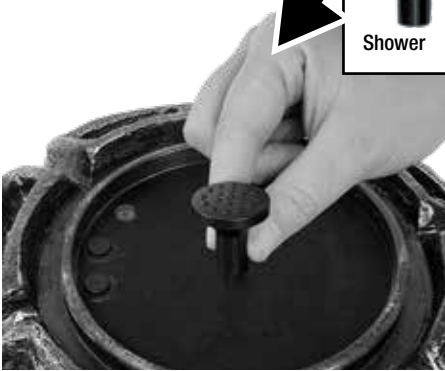
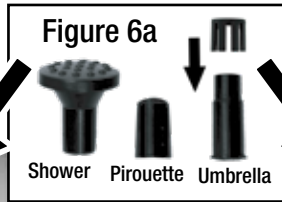


Figure 6b

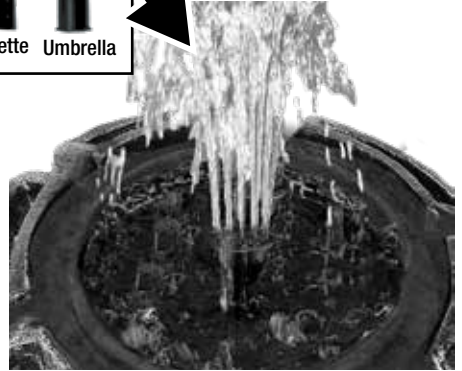


Figure 6c

### DANCING WATER ATTACHMENTS: (OPTIONAL)

You can put any of the Dancing Water Attachments on the Fountain whether the Fountain is running or is not running.

- Select one of the Dancing Water Attachments and place on the outlet in the middle of the Battery Compartment (Figure 6a, 6b & 6c).

**NOTE:** Please be aware that there is over spray that occurs while using the Dancing Water Attachments.



You can now try your fountain to see if everything is working correctly! Turn your fountain on and you should see water flowing from the outlet on the top of the Topper. **If water is not flowing, please refer to the “Priming The Water Pump” in the “Troubleshooting & Maintenance” Section.**



GO TO THE NEXT PAGE TO CONTINUE  
WITH SETUP OF YOUR FOUNTAIN.



# STEP 5

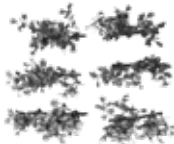
---

## INFINITY BOWL, FAUX GREENERY, PLANTER & BIRD FEEDER

You will need:



**3-Long Faux  
Greenery**



**6-Short Faux  
Greenery**



**Infinity Bowl**

---

## INFINITY BOWL

To install the Bowl as an Infinity Pool:

- Remove any Dancing Water Attachment off Fountain that may be attached (Figure 1).
- Place infinity Bowl on the fountain spout just as you would place one of the Dancing Waters Attachments (Figure 2).
- Push button to enjoy your fountain.
- Water will fill up Infinity Pool and run out the 4 spouts (Figure 3).

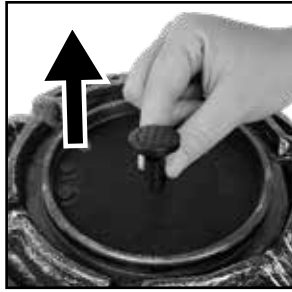


Figure 1

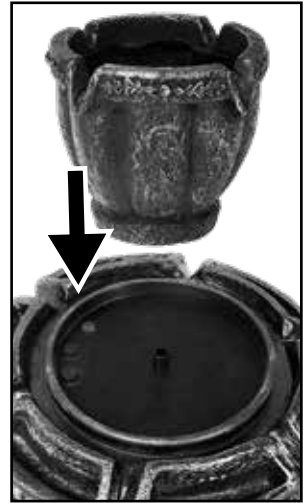


Figure 2



Figure 3

## FAUX GREENERY

To install the Faux Greenery:

- The 6 Short Faux Greenery is installed on the outer edge of the Topper. Place 1 Short Faux Greenery into each of the 6 Topper sections (Figure 4).
- The 3 Long Faux Greenery is installed in the outer edge of the Large Bowl. Place the 3 Long Faux Greenery into the section on the outer edge of the Large Bowl one after another/end to end until circle is complete (Figure 5).
- Complete installation of Faux Greenery should look like Figure 6.

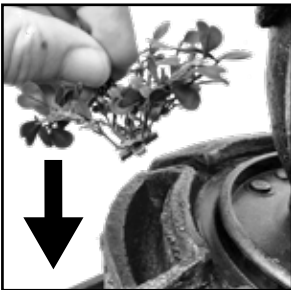


Figure 4



Figure 5



Figure 6

---

## SETTING UP AS A PLANTER

To setup Fountain as a Planter:

- Remove any Faux Greenery or Bird Seed that may be installed on the Fountain. (Figure 7 & 8).
- You can plant in the 6 small recesses in the outer edge of the topper and along the outer perimeter of the large bowl.
- Complete installation of Plants should look like Figure 9.

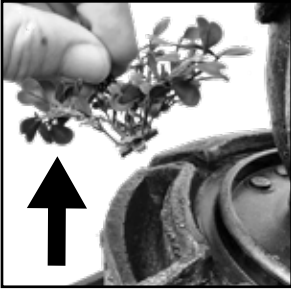


Figure 7



Figure 8



Figure 9

## SETTING UP AS A BIRD FEEDER

To setup Fountain as a Bird Feeder:

- Remove any Faux Greenery or plants that may be installed on the Fountain. (Figure 10).
- You can put bird seed in the 6 small recesses in the outer edge of the topper and along the outer perimeter of the large bowl (Figure 11).
- Complete installation of Bird Seed should look like Figure 12.

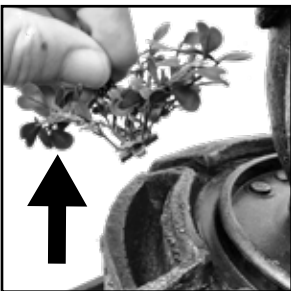


Figure 10



Figure 11



Figure 12



---

# TROUBLESHOOTING AND MAINTENANCE

## WATER PUMP CONNECTION

If your fountain's water pump tube becomes disconnected from pump and or Battery Compartment use these instructions to reconnect your water pump.



**Before beginning, remove the Battery Assembly from Topper. Step 1:** Lift the Battery Assembly out of the Topper to access pump and tube.



**Step 2:** Rest the Battery and Pump Assembly on its side. Check the connection at the top of the water tube at the Battery Housing. Re connect if needed.



**Step 3:** Check the connection at the bottom of the water tube at the Water Pump. Re connect if needed.



**Step 4:** Reassemble the Battery and Pump Assembly in reverse of removal or refer to the instructions in the Battery and Pump Assembly section of this manual.

---

## PRIMING THE WATER PUMP

If you find the Water Pump is running, but water is not flowing from your Fountain, you can try priming the Water Pump:

- **Turn off Fountain:** Grab both sides of the Fountain and quickly shake your Fountain for ten seconds. This is to dislodge any air bubbles that may be caught in your Water Pump.
- **Press the button to turn your Fountain on:** Water should be flowing from the top of your fountain. If water is not flowing, **Press and hold button for over 2 seconds again to turn your Fountain off** and repeat the step above.

## USING LEVELING SHIMS

If you are having trouble getting water to flow evenly off of the edge of your fountain, you may need to level the surface that your fountain is placed on. With the included leveling shims, you do not need to move your fountain, just follow the instructions below to get even water flow.



Place the shim underneath the base on the opposite side that is not flowing as strongly as the other sides.



Grasp the shim and break it on the crease closest to the end of the base.



Once the shim is broken, it will be hidden but will level your fountain.

## CLEANING YOUR FOUNTAIN

To keep your fountain in tip top shape and for a prolonged life It is important to keep your fountain clean.

Periodically clean the fountain, bowl or water container that the fountain is placed in.



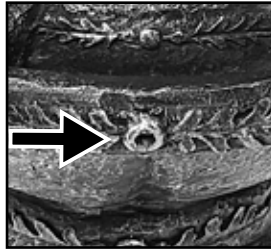
---

## CLEANING YOUR FOUNTAIN (CONTINUED)

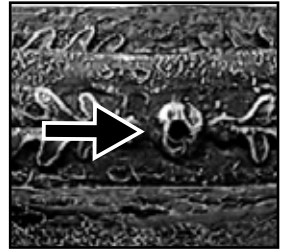
- To clean your fountain, drain of all water and disassemble
- Use a mild soap and a soft cloth to clean the parts of your fountain.
- DO NOT SCRUB YOUR FOUNTAIN, THIS COULD CAUSE DAMAGE TO

## CLEANING THE BOWL & FOUNTAIN TOWER DRAIN HOLES

If you find that the fountains Large Bowl and Topper drain holes is not draining correctly use a small wire such as a paper clip and push in several times until blockage is removed or until water is draining freely.



Topper Drain Hole

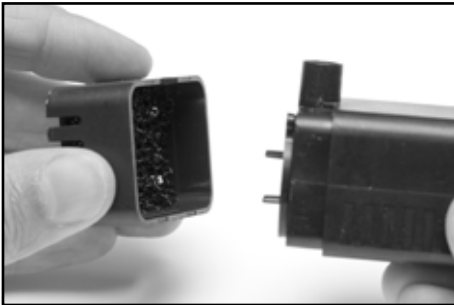


Large Bowl Drain Hole

## CLEANING YOUR WATER PUMP'S PARTS

After about six weeks of usage, clean the water pump's impeller to keep your fountain in tip-top shape. The water pump impeller inside of the water pump is what pushes water up through the fountain. Clean the water pump impeller to make sure your fountain runs optimally.

- Drain the fountain of all water prior to cleaning the water pumps' parts.

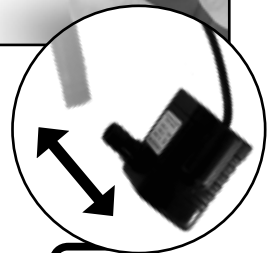


Begin by disconnecting the pump from the water tube. (See circular inset image)

**Step 1:** Remove the front of the water pump by grabbing the sides of the front panel and pull it off the unit.



**Step 2:** Remove the impeller chamber cover. This is tightly fitted on to the impeller chamber, but will come off.



---

## CLEANING YOUR WATER PUMP PARTS (CONTINUED)



**Step 3:** Remove the impeller from its chamber.



**Step 4:** Rinse the impeller and the impeller chamber until all debris has been removed.

Reassembly is the reverse of disassembly.

- Replace the impeller in the impeller chamber.
- Put the impeller chamber cover back on.
- Replace the pump's front panel.

## COLD STORAGE

- Turn power off
- Remove fountain from container.
- Clean and dry the fountain of all water.
- Remove the batteries for long term storage and bring the fountain indoors.

Now is a great time to clean the pump to remove any debris that may have accumulated throughout the year.



# TROUBLESHOOTING AND MAINTENANCE

PROBLEM	SOLUTION
<b>Fountain is not working</b>	Check that batteries have a full charge: (See Changing Battery Section).
<b>Water Not Flowing</b>	Prime Pump as instructed. (Refer to Priming The Water Pump).
	Check batteries are installed correctly: (See Installing Battery Section).
	Check that batteries have a full charge: (See Changing Battery Section).
	Check water level.
	Check pump is free of debris, kinks or obstructions. (See Troubleshooting section).
	Check water tube is connected properly. (See Base and Fountain Bowl Installation Section).
<b>Loud Pump</b>	Prime Pump as instructed. (Refer to Priming The Water Pump Section)
	Check water level.
	Check pump is free of debris, kinks or obstructions. (See Troubleshooting section)
<b>Fountain Settings not working</b>	Check that batteries have a full charge: See Changing Battery Section.
<b>Low Water Flow</b>	See Changing Battery Section.
	Check pump is free of debris, kinks or obstructions. See Troubleshooting section.
	Check water level.
	Pump is cavitating. See Priming The Water Pump Section.
<b>Suddenly Stops</b>	Check pump is free of debris, kinks or obstructions. See Troubleshooting section.



## IMPORTANT BATTERY SAFETY INSTRUCTIONS

**DANGER:** Do not store battery in an airtight container as it may cause an explosion.

**WARNING:** When using electric devices, basic safety precautions should always be followed to reduce the risk of fire, electric shock and personal injury, including the following:

**WARNING:**

1. Do not incinerate the battery even if it is severely damaged or is completely worn out.
  - The battery can explode in a fire.
  - Check with municipal codes in your area for possible special battery disposal instructions.
2. If liquid leaks from the battery cell, discontinue use immediately and dispose of batteries properly.
3. Use only 4-1.5V D Cell Batteries.
4. Do not attempt to disassemble, remodel or destroy the batteries, as it may cause battery leakage, fire, or bursting.
5. Never dispose of batteries in the garbage.
  - Disposal of batteries in the garbage is unlawful under state and federal environmental laws and regulations.
  - Always take used batteries to your local battery-recycling center.
6. Do not mix old and new batteries.
7. Do not mix alkaline, standard (Carbon-zinc), or rechargeable (Ni-Cd, Ni-Mh, etc) batteries.

## LIMITED ONE YEAR WARRANTY

This product has a one year limited warranty on all materials and workmanship. Bernini™ warrants the original purchaser of this product that the product will be free from manufacturing defects in workmanship and material for a period of one (1) year from the date of original purchase.

If within one (1) year this product fails due to defect in material or workmanship, Bernini™ will repair, replace or supply any defective part at their discretion.

The purchaser must contact Bernini™ and provide a description of the defective part, including digital pictures if requested, with this original purchase documentation as validation of warranty coverage.

This warranty does not cover or apply to: (a) damage to the product due to misuse, mishandling, and abuse, (b) products not used in accordance with instructions, (c) product not assembled or installed according to instructions, and (d) normal wear and tear.

---

Call for assistance at 1+ (619) 449-2392 or you can email us at:  
[customercare@berninifountains.com](mailto:customercare@berninifountains.com)

Our Customer Care Department is available:  
Monday - Friday 8:30am to 4:00pm PST / 11:30am - 7:00pm EST

# BERNINI™

---

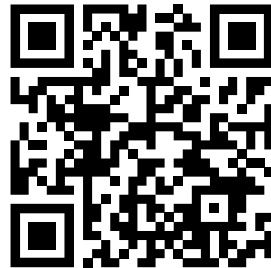
## THANK YOU FOR SELECTING BERNINI FOUNTAINS

We're excited to offer you the highest quality fountains with the reliability you need! We would love to hear if you have any suggestions or ideas that can be incorporated into new or enhanced features. We hope you have many years of enjoyment from your fountain and we look forward to hearing from you.

Scan the below image  
to Register Your warranty.



Scan this QR code for the latest  
version of these instructions



Or go to:  
[www.berninifountains.com/register](http://www.berninifountains.com/register)



PHONE:  
1+ (619) 449-2392



EMAIL:  
[customercare@berninifountains.com](mailto:customercare@berninifountains.com)



WEB:  
[www.berninifountains.com](http://www.berninifountains.com)



FB: Bernini Fountain  
Company



PINTEREST: Bernini  
Fountain Company



INSTAGRAM:  
[@berninifountains](https://www.instagram.com/berninifountains)



TWITTER:  
[@yrdllc](https://twitter.com/yrdllc)

Santee, California 92071

World Wide Patents Pending

© Yeiser Research & Development, LLC; 2023. All rights reserved.

---

Made in China  
Designed in the USA

001352 BBFI rev 1a us