

BERNINI™

AVOLA FOUNTAIN

OWNER'S MANUAL



2023

BERNINI™

THANK YOU FOR YOUR PURCHASE!

Product Registration:

Bernini Fountains recommends you register your new fountain. You can register on-line at berninifountains.com/register, by printing and mailing in a registration card available on-line from our website, by calling our customer care department at **1+ (619) 449-2392**, or by emailing us at customercare@berninifountains.com. Failure to register your fountain will not diminish your warranty rights. However, registering your fountain will allow Bernini Fountains to better serve you with any of your customer care needs.

FIRST THINGS FIRST:

Bernini Fountains is dedicated to our customers. We strive to make your customer care experience as pleasurable as possible. With that being said, there are always circumstances beyond our control when a fountain doesn't work or breaks under normal operating conditions. We think it's important that you know what you can expect from us. This is why we have a limited one year warranty on our fountains.



HAS YOUR BERNINI EXPERIENCE LEFT YOU HAPPY?

Tell your friends, tag us and leave us a review! We would love to hear your feedback! Share your experience by writing comments and reviews on berninifountains.com or connect with us on social media!

#BERNINFOUNTAINS



OR HAS SOMETHING LEFT YOU WANTING MORE?

We're sorry to hear that! Our friendly Customer Care Team is ready to assist you in any way possible to resolve any issues you may have, Monday - Friday 8:30am to 4:00pm PST, 11:30am to 7:00pm EST

CALL US, EMAIL US, CHAT WITH US



PHONE:
1+ (619) 449-2392



EMAIL:
customercare@berninifountains.com



WEB:
www.berninifountains.com



FB: Bernini Fountain
Company



PINTEREST: Bernini
Fountain Company



INSTAGRAM:
[@berninifountains](https://www.instagram.com/berninifountains)



TWITTER:
[@bernydlic](https://twitter.com/bernydlic)

PLEASE READ FIRST BEFORE RETURNING

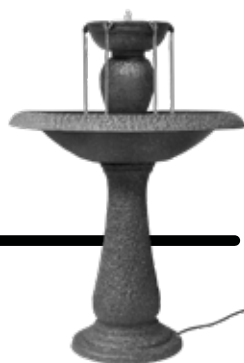
- Please call us for assistance at 1+ (619) 449-2392 or email us at customercare@berninifountains.com
- Our Customer Care Department is available:
Monday - Friday 8:30am to 4:00pm PST, 11:30am to 7:00pm EST
- If you have any questions regarding assembly, parts or operation, please visit our website at www.berninifountains.com.
- At berninifountains.com you will find instructional videos on how to assemble and operate your fountain. In addition, you can also view our newest products.
- This product comes with a one year limited warranty against materials and workmanship, see page 18.
- Please review the list of accessories included with your Bernini™ Fountain on the next page. Please note, images of parts are not to scale with one another.

About Avola:

An Ionian seaside town, the town focuses heavily on the sea, with its history as a tuna fishing port. Avola dates back to a pre-Greek people called the Sicani. The Greek colony here was established in the 8th century BC.

PARTS

PARTS FOR YOUR BERNINI™ FOUNTAIN



Large Bowl



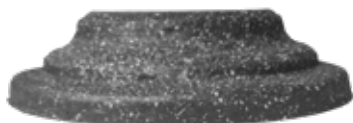
Fountain Tier



Base



**Power Cord &
Pump**



Pedestal



Leveling Shim

CONTENTS

Page:

- 1. **STEP 1: PEDESTAL & BASE**
- 2 - 3. Pedestal, Base & Bowl Locking System
- 4. **STEP 2: FOUNTAIN BOWL INSTALLATION**
- 5. Large Bowl Locking System
- 6. **STEP 3: WATER PUMP & FOUNTAIN TIER INSTALLATION**
- 7. Water Pump Installation
- 8 - 9. Fountain Tier Installation
- 10. **STEP 4: SETTING UP YOUR FOUNTAIN**
- 11. Fill Your Fountain
- 11. Operating Your Fountain
- 12. **TROUBLESHOOTING AND MAINTENANCE**
- 12. Water Pump Connection
- 12. Using Leveling Shims
- 13. Priming the Water Pump
- 14. Water Pump Flow Adjustment
- 14. Cleaning your Fountain
- 14 - 15. Cleaning Your Water Pump Air Filters
- 15 - 16. Cleaning Your Water Pump Impeller
- 17. Cold Storage
- 17. Troubleshooting Guide
- 18. Limited Warranty information

STEP 1

PEDESTAL & BASE

You will need:



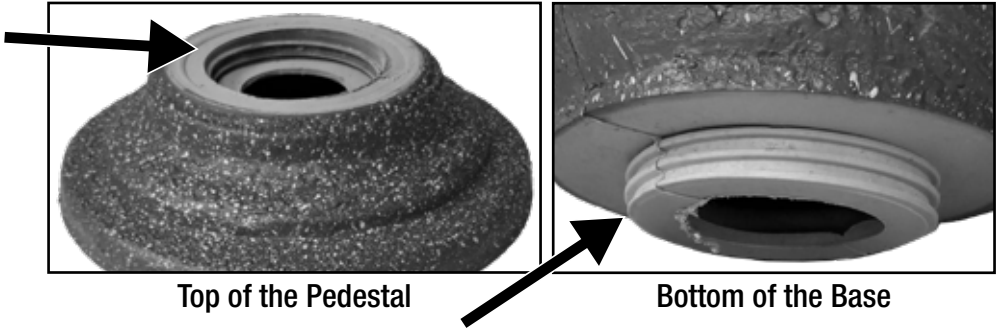
Pedestal



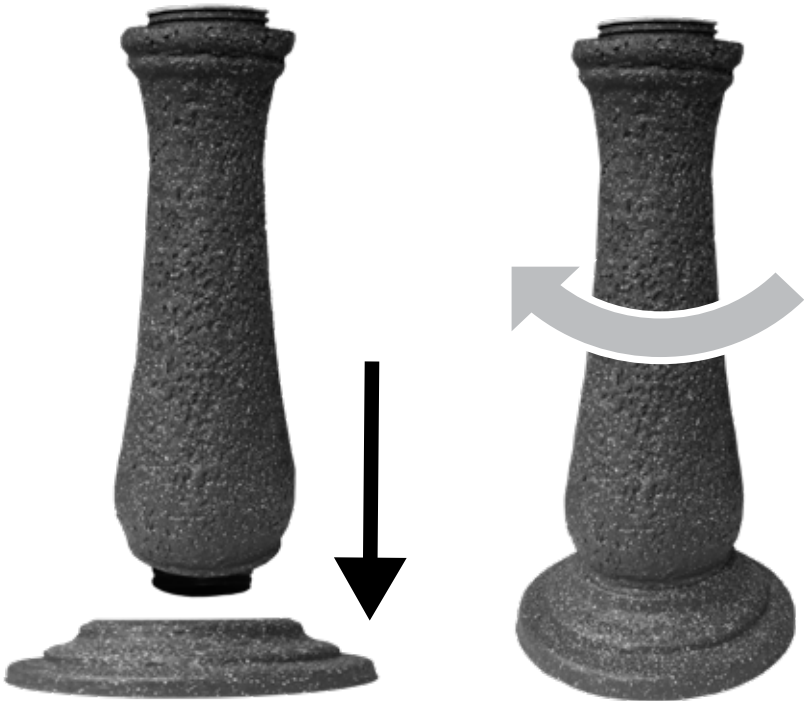
Base

PEDESTAL, BASE & BOWL LOCKING SYSTEM

A look at how the base & bowl locking system works on your Fountain.



Note: You will notice that there are threads on the inside top of the Pedestal and there are corresponding threads on the bottom of the Base. These threads fit together and lock when tightened.



Step 1: Make sure to place the Pedestal of your Fountain on a flat, firm surface. Screw the Base into the pedestal until snug, do not over-tighten.





At this point, your fountain should look like the image above.

GO TO THE NEXT PAGE TO CONTINUE WITH SETUP OF YOUR FOUNTAIN.



STEP 2

FOUNTAIN BOWL INSTALLATION

You will need:



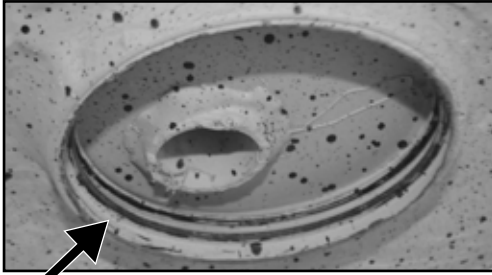
**Assembled Base
& Pedestal**



Large Bowl

LARGE BOWL LOCKING SYSTEM

A look at how the Large Bowl locking system works on your Fountain.



Bottom of the Large Bowl

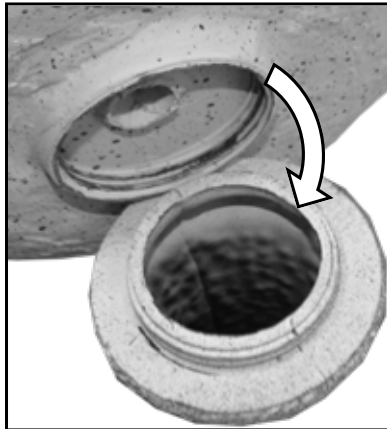


Top of the Base

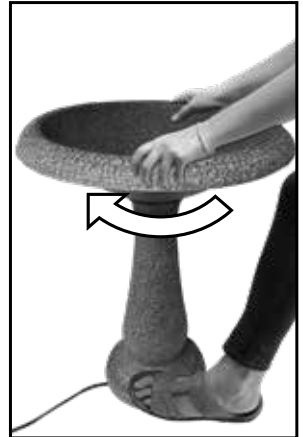
Note: The same as with the Pedestal and bottom of the Base, you will notice that there are threads on the top of the Base and there are corresponding threads in the bottom of the Bowl. These threads fit together and lock when tightened.



Step 1: Be sure to place the base of your fountain on a flat, firm surface.



Step 2: Set the Large Bowl on the base. Screw the Large Bowl into the Base until snug, do not over-tighten.



At this point, your fountain should look like the image on the right.



GO TO THE NEXT PAGE TO CONTINUE WITH SETUP OF YOUR FOUNTAIN.



STEP 3

WATER PUMP & FOUNTAIN TIER INSTALLATION

You will need:



**Power Cords &
Pump**

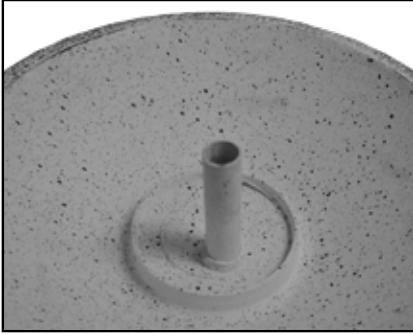


**Assembled Base &
Large Bowl**



Fountain Tier

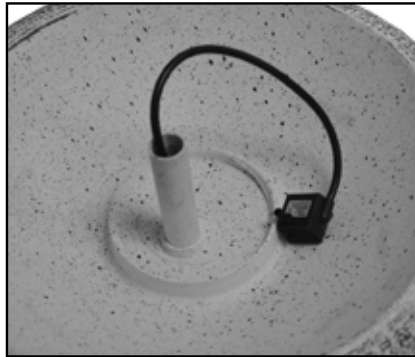
WATER PUMP INSTALLATION



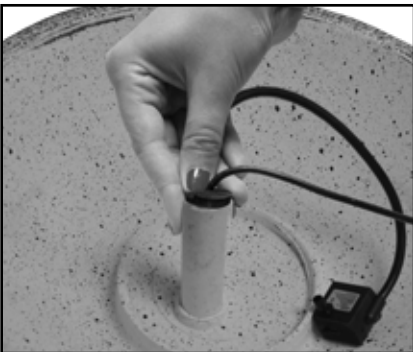
For the next step, you will install the fountain tier into the large bowl.



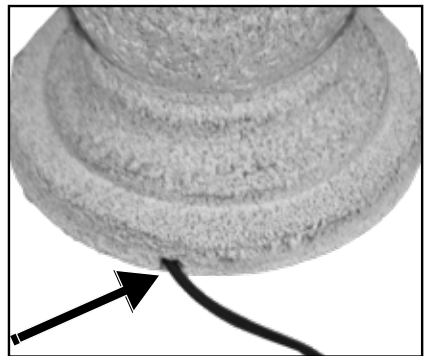
Step 1: Feed the Water Pump cord down the pipe.



Step 2: Be sure to leave approximately 7 to 8 inches of slack in the cord coming from the water pump so the pump will sit on the bottom of the large bowl when the fountain tier is assembled.



Step 3: Firmly press the plug into the pipe in the middle of the Large Bowl to ensure a water-tight seal.

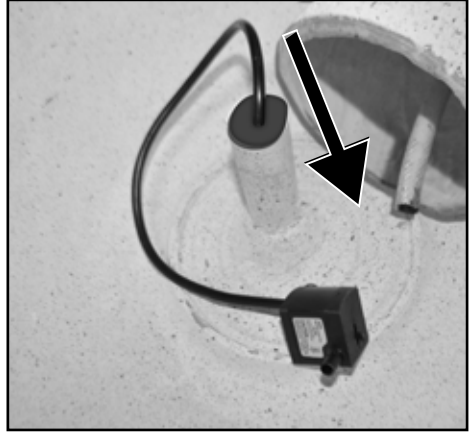


Step 4: Route the Electrical Power Cord through the base of the fountain and through the notch on the bottom of the Pedestal.

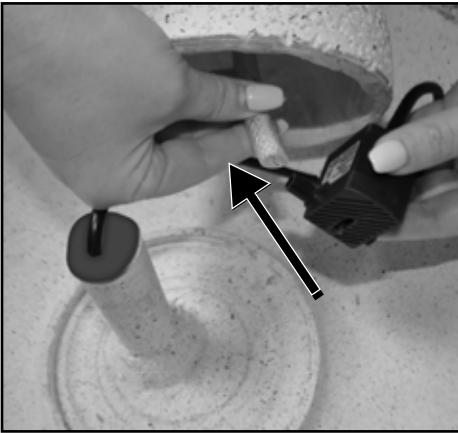
FOUNTAIN TIER INSTALLATION



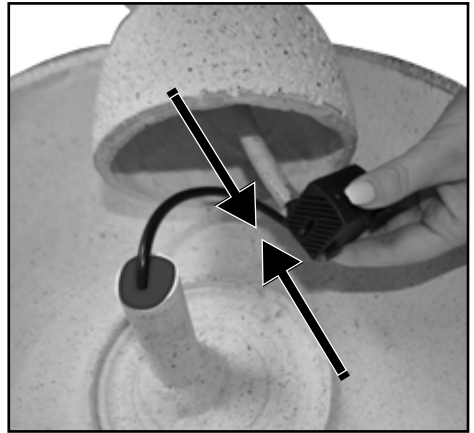
For the next step, you will install the fountain tier into the large bowl.



Step 1: Rest the fountain tier on the side of the large bowl (Black Arrow).



Step 2: Connect the male outlet on the top of the water pump to the tube inside of the fountain tier. Make sure this connection is snug.



Note: During assembly of fountain an excess of electrical cord or an excess of rubber hose inside the Fountain Tier will cause the pump to not sit correctly and or the rubber hose to kink which will cause a loss of water flow from the water outlet in the Fountain Tier. To fix this issue, push any excess electrical cord down into the Fountain Base until the pump sits flat on the base of the large bowl. Also, this may require trimming of the rubber hose to also allow the pump to sit flat on the large bowl without kinking the rubber hose.



FOUNTAIN TIER INSTALLATION (CONTINUED)

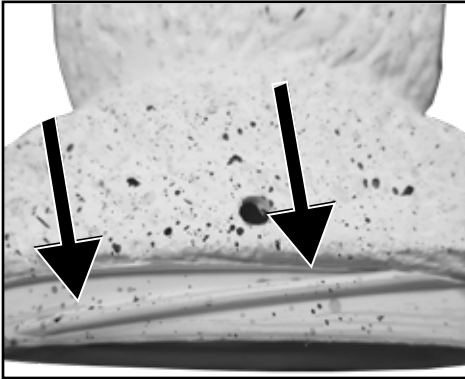


Figure 1

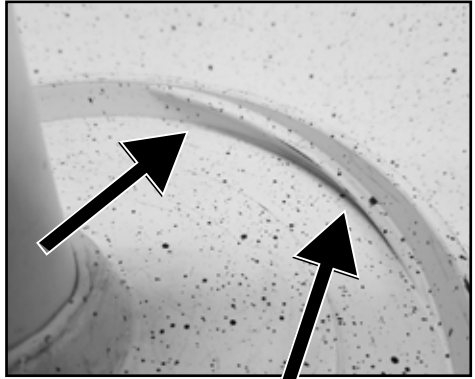


Figure 2

Step 3: As shown in previous sections there are also threads in the bottom of the fountain tier (Figure 1) and middle of the large bowl (Figure 2) which will lock the fountain tier to the middle of the large bowl (Black arrows).



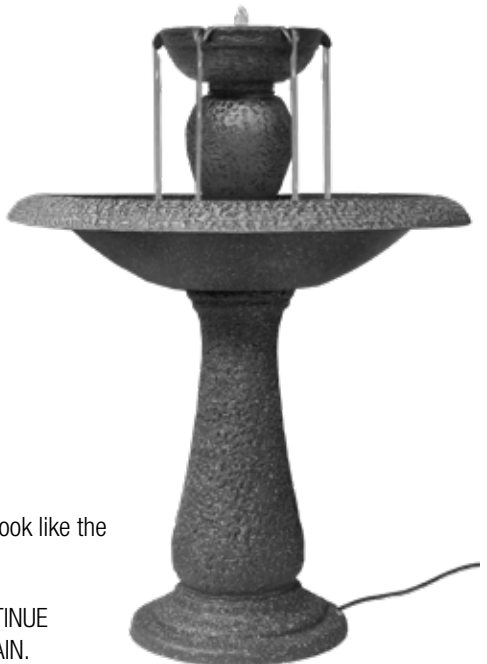
Step 5: Connect the fountain tier to the large bowl and turn the fountain tier about a quarter turn clockwise to lock it into place.



At this point, your fountain should look like the image to the right.



GO TO THE NEXT PAGE TO CONTINUE WITH SETUP OF YOUR FOUNTAIN.



STEP 4

SETTING UP YOUR FOUNTAIN

You will need:



WATER TO
FILL YOUR
FOUNTAIN

Fountain Assembled

FILL YOUR FOUNTAIN

Fill the Fountain Tier until water pours over the spouts. Then fill the Large Bowl until the water is about 1 inch (2.5 centimeters) from the top of the bowl.

OPERATING YOUR FOUNTAIN

After you have filled your Fountain:

- Grab both sides of the Large Bowl and quickly shake your Fountain for ten seconds. This is to dislodge any air bubbles that may be caught in your Water Pump.
- Plug in your Fountain.
- Water should be flowing from the top of your fountain.
- If water is not flowing, Unplug your Fountain, and repeat the step above.

IF YOUR FOUNTAIN IS MAKING A LOUD NOISE, DON'T PANIC!

This just means you need to add more water or that there are air bubbles stuck in the Water Pump.

Your pump will not be harmed and you can easily fix this issue.

You can try priming the Fountain again by repeating the steps above. If the problem persists, refer to the “Priming The Water Pump” section of this manual for instructions on how to prime the Water Pump.



You can now try your fountain to see if everything is working correctly! Turn your fountain on and you should see water flowing from the outlet on the top of the Topper. **If water is not flowing, please refer to the “Priming The Water Pump” in the “Troubleshooting & Maintenance” Section.**



THE FOLLOWING SECTION COVERS ANY TROUBLESHOOTING AND MAINTENANCE ISSUES AS NEEDED.



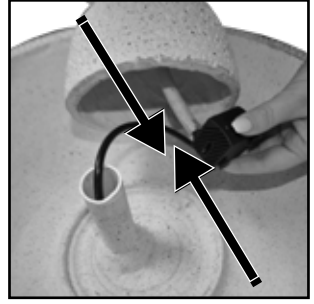
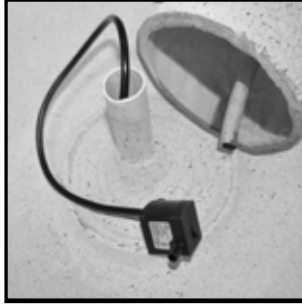
TROUBLESHOOTING AND MAINTENANCE

WATER PUMP CONNECTION

If your Bernini™ Fountain did not come with the water pump already connected to the tube inside of the fountain tier or if the water pump gets disconnected from the fountain tier, use these instructions to reconnect your water pump.



Step 1: Remove the fountain tier by turning the fountain tier counter clockwise unscrewing and then lift off. Rest the fountain tier on its side.

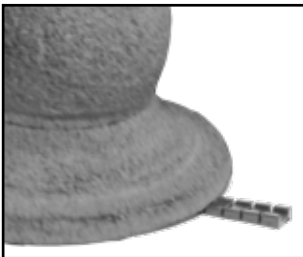


Step 2: Connect the male outlet on the top of the water pump to the tube inside of the fountain tier. Make sure this connection is snug.

Then reassemble the fountain tier with the instructions on page 8.

USING LEVELING SHIMS

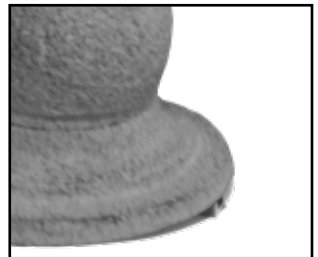
If you are having trouble getting water to flow evenly off of the spouts on your Bernini™ Fountain, you may need to level the surface that your fountain is placed on. With the included leveling shims, you do not need to move your fountain, just follow the instructions below to get even water flow.



Place the shim underneath the base on the opposite side that is not flowing as strongly as the other sides.



Grasp the shim and break it on the crease closest to the end of the base.



Once the shim is broken, it will be hidden but will level your fountain.

PRIMING THE WATER PUMP

IS YOUR FOUNTAIN MAKING A LOUD NOISE OR DO YOU NOT SEE WATER FLOWING?

If you find the water pump is running, but water is not flowing from your fountain, or you hear a loud grinding noise coming from your fountain, not to worry, you can try priming the water pump:

- Begin by unplugging to turn your fountain off.
- Firmly grasp onto the two sides of the large bowl. Agitate the water by quickly shaking the fountain back and forth for about five seconds.
- Plug the fountain in to turn your fountain on.
- If the problem still persists, repeat previous step 2 - 3 times. This helps dislodge any air bubbles in your pump that may be causing the problem.

If the problem still persists, try the method below:

- Begin by unplugging to turn your fountain off.
- Remove the fountain tier by turning the fountain tier counter clockwise (unlocking) and lift off. You can now rest the fountain tier on its side in the large bowl.
- Now detach the water pump from the feeder tube inside the fountain tier.
- When removing the water pump, use caution when pulling the pump from the feeder tube. Pinch the bottom of the feeder tube close to the pump with one hand and then pull the water pump from the feeder tube with your other hand.



Step 1: Submerge the Water Pump(s) into the water inside the Large Bowl and lightly shake the pump underwater to release air bubbles inside the vents on the Water Pump.



Step 2: Plug the fountain in to turn on turn the fountain on and you should see water flowing from the pump. Let the pump run for about ten seconds and then unplug the power to turn your fountain off.



Step 3: Reconnect the Water Pump to the feeder tube inside the fountain bowl and reattach the Fountain Tier to the Large Bowl.

WATER PUMP FLOW ADJUSTMENT

Step 1: Adjust the water flow by locating the Water Flow Adjustment Lever on the Water Pump side cover.

Move the lever toward the + (plus) sign to increase water flow or – (minus) sign to decrease water flow.



CLEANING YOUR FOUNTAIN

In order to keep your fountain in tip-top shape and free of algae, you should clean your fountain every two months.

To clean your fountain:

- Drain all water and disassemble.
- Use a mild soap and a soft cloth to clean the parts of your Bernini™ fountain.
- Your fountain bowl will form a natural patina finish which with time may appear lighter or whiter than the original color. This is normal.

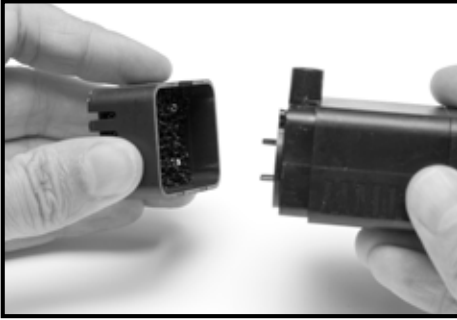
DO NOT SCRUB YOUR FOUNTAIN, AS THIS COULD CAUSE DAMAGE TO THE FINISH OF YOUR BERNINI™ FOUNTAIN.

CLEANING YOUR WATER PUMP AIR FILTERS

After about six weeks of usage, you may want to clean the Water Pump's filter and impeller to keep your Bernini™ Fountain in tip-top shape.



CLEANING YOUR WATER PUMP AIR FILTERS (CONTINUED)



Begin by disconnecting the pump from the Fountain Tier.

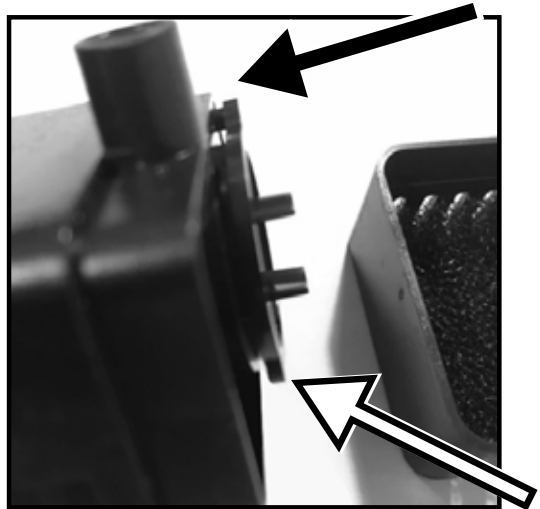
Step 1: Remove the front of the Water Pump by grabbing the sides of the front panel and pull it off the unit.

Step 2: Wash the filters under running water until debris has been removed. Then replace the filters and pump's front cover.

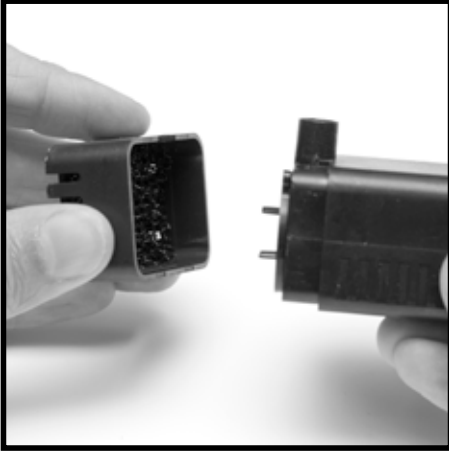
CLEANING YOUR WATER PUMP IMPELLER

The impeller inside of the Water Pump is what pushes water up through your fountain, allowing you to enjoy the soothing sounds and wonderful sights of your Bernini™ Fountain. After long periods of usage, this part will need to be cleaned to make sure your fountain runs optimally.

Please Note: If pump is cavitating and/or water is not flowing or not flowing properly, check that the water pump impeller chamber cover is pressed on all the way.



CLEANING YOUR WATER PUMP IMPELLER (CONTINUED)



Step 1: Remove the front of the Water Pump by grabbing the sides of the front panel and pull it off the unit.



Step 2: Remove the impeller chamber cover. This is tightly fitted onto the impeller chamber, but will come off.



Step 3: Remove the impeller from its chamber.



Step 4: Rinse the impeller until all debris has been removed. Then replace the impeller in the impeller chamber, put the impeller chamber back on and then replace the pump's front panel.



COLD STORAGE

- Drain the water from fountain prior to the first freeze of the season.
- Clean and dry the fountain of all water.
- Remove the water pump and bring it indoors.
- Now is a great time to clean the pump to remove any debris that may have accumulated throughout the year. (See page 13)
- Store in a warm dry area.

TROUBLESHOOTING GUIDE

PROBLEM	SOLUTION
Water Not Flowing	Check if Fountain is plugged in correctly: See Setting Up Fountain Section.
	Pump is on but no water flow: Check water level.
	Pump is on but no water flow: Check pump is free of debris, kinks or obstructions. See Troubleshooting section.
	Pump is on but no water flow: Check water tube is connected properly. See Base and Fountain Ball Installation Section 1.
Low Water Flow	Check if Fountain is plugged in correctly: See Setting Up Fountain Section.
	Pump is on but low water flow: Check pump is free of debris, kinks or obstructions. See Troubleshooting section.
	Pump is on low water flow: Check water level.
	Pump is on but low water flow: pump is cavitating. See Priming The Water Pump Section.
Loud Sound	Loud sound and weak flow: Air in pump: See Priming The Water Pump Section.
	Loud sound and weak flow: Check pump is free of debris, kinks or obstructions. See Troubleshooting section.
Suddenly Stops	Pump suddenly stops: Check pump is free of debris, kinks or obstructions. See Troubleshooting section.



LIMITED ONE YEAR WARRANTY

This product has a one year limited warranty on all materials and workmanship. Bernini™ warrants the original purchaser of this product that the product will be free from manufacturing defects in workmanship and material for a period of one (1) year from the date of original purchase.

If within one (1) year this product fails due to defect in material or workmanship, Bernini™ will repair, replace or supply any defective part at their discretion.

The purchaser must contact Bernini™ and provide a description of the defective part, including digital pictures if requested, with this original purchase documentation as validation of warranty coverage.

This warranty does not cover or apply to: (a) damage to the product due to misuse, mishandling, and abuse, (b) products not used in accordance with instructions, (c) product not assembled or installed according to instructions, and (d) normal wear and tear.

Call for assistance at 1+ (619) 449-2392 or you can email us at:
customercare@berninifountains.com

Our Customer Care Department is available:
Monday - Friday 8:30am to 4:00pm PST / 11:30am - 7:00pm EST

THANK YOU FOR SELECTING BERNINI FOUNTAINS

We're excited to offer you the highest quality fountains with the reliability you need! We would love to hear if you have any suggestions or ideas that can be incorporated into new or enhanced features. We hope you have many years of enjoyment from your fountain and we look forward to hearing from you.



Scan this QR code for the latest version of these instructions



PHONE:
1+ (619) 449-2392



EMAIL:
customercare@berninifountains.com



WEB:
www.berninifountains.com



FB: Bernini Fountain Company



PINTEREST: Bernini Fountain Company



INSTAGRAM:
@berninifountains



TWITTER:
@yrdllc

Santee, California 92071

World Wide Patents Pending

© Yeiser Research & Development, LLC; 2022. All rights reserved.

Made in China
Designed in the USA

001351 BAFI rev 1a us