

## ASSEMBLY:

### Step 1:

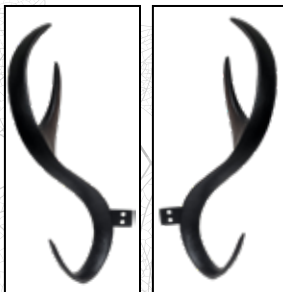
Remove the Antler Metal Garden Hose Holder parts from the packaging and lay out the inventory to ensure all parts are present.

See parts list below.

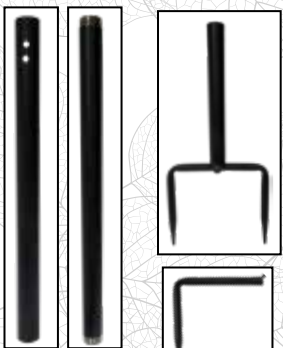
### PARTS:



4-SHORT SCREWS  
2-LONG SCREWS  
6-NUTS  
1-ALLEN KEY  
1-WRENCH



ANTLERS  
1-LEFT AND  
1-RIGHT



1-STAKE AND  
POLE

1-MIDDLE STAKE



1-ANTLER  
BRACKET

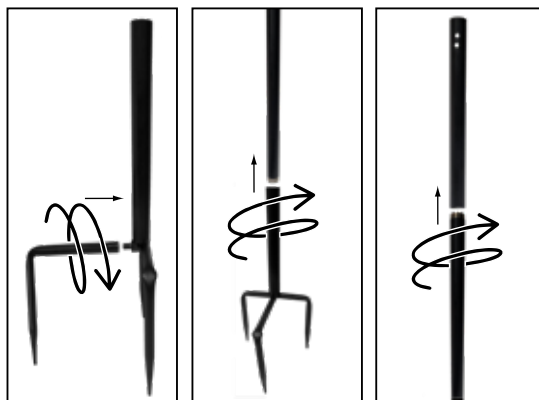


FIGURE 1

FIGURE 2

FIGURE 3

**Step 2: NOTE: Top Pole has 2 holes that will be used to mount the Antlers and Antlers Bracket**

Assembling the Poles and Stakes: Thread the Middle Stake to the Main Stake and Pole (Figure 1). Thread the assembled Stake and Pole into the Middle pole (Figure 2). Thread the assembled Middle Pole and Stake into the Top Pole (Figure 3).

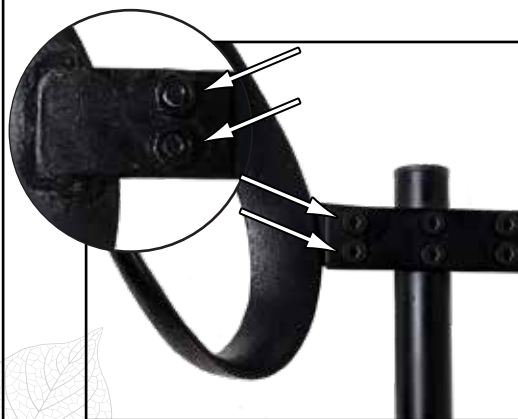


FIGURE 6

### Step 5:

Insert 2 short screws through the left set of holes of the bracket and into the 2 holes of the left Antler (Figure 6 arrows), thread 2 nuts onto the screws and tighten (Figure 6).

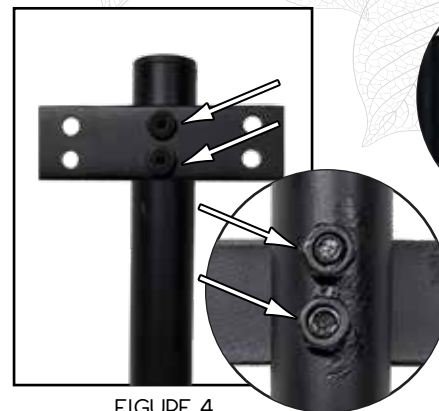


FIGURE 4

### Step 3:

Insert the 2 long screws through middle holes of the bracket and into the 2 middle holes of the pole (Figure 4 arrows), thread 2 nuts onto the screws and tighten (Figure 4).

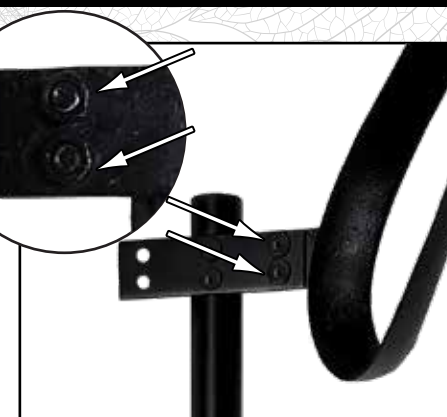


FIGURE 5

### Step 4:

Insert 2 short screws through the right set of holes of the bracket and into the 2 holes of the right Antler (Figure 5 arrows), thread 2 nuts onto the screws and tighten (Figure 5).

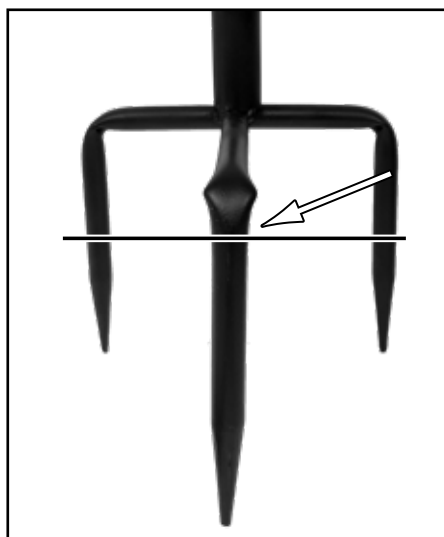


FIGURE 7

### Step 6:

Push stakes into ground to the line indicated by the arrow in Figure 7 above.

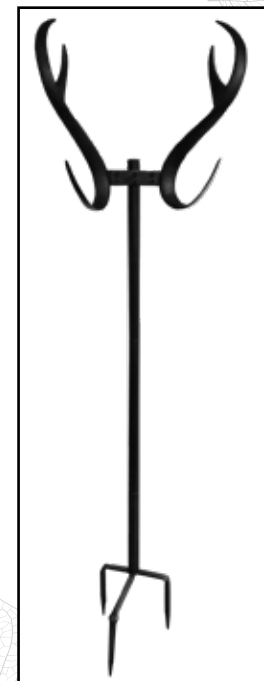


FIGURE 8

### Step 6:

The assembly of your Antler Metal Garden Hose Holder is now complete and should look the image in Figure 8.



### LIMITED ONE YEAR WARRANTY

This warranty gives you specific legal rights and you may also have other rights which vary from state to state. This product has a one year limited warranty on all materials and workmanship. Bernini® warrants the original purchaser of this product that the product will be free from manufacturing defects in workmanship and material for a period of one (1) year from the date of original purchase. If within one (1) year this product fails due to defect in material or workmanship, Bernini® will repair, replace or supply any defective part at their discretion. The purchaser must contact Bernini® and provide a description of the defective part, including digital pictures if requested, with the original purchase documentation as validation of warranty coverage. This warranty does not cover or apply to: (a) damage to the product due to misuse, mishandling, or abuse, (b) products not used in accordance with instructions, (c) product not assembled or installed according to instructions, and (d) normal wear and tear. Call us for assistance at +1 (619) 449-2392 or you can email us at [customer care@berninifountains.com](mailto:customer care@berninifountains.com) or mail us at: 9545 Pathway Street, Santee, CA 92071, Our Customer Care Department is available: Monday - Friday 8:30am to 4:00pm PST / 11:30am - 7:00pm EST

### PLEASE READ FIRST BEFORE RETURNING:

Please call us for assistance at 1-619-449-2392 or email us at [customer care@berninifountains.com](mailto:customer care@berninifountains.com). Our Customer Care Department is available: Monday - Friday 8:30am to 4:00pm PST, 11:30am to 7:00pm EST. If you have any questions regarding assembly, parts, or operation, please visit our website at [www.berninifountains.com](http://www.berninifountains.com). This product comes with a one year limited warranty against materials and workmanship.



Scan this QR code for  
the latest version of these  
instructions