

BERNINI™

TRAPANI FOUNTAIN TOWER

OWNER'S MANUAL



2022

BERNINI™

THANK YOU FOR YOUR PURCHASE!

Product Registration:

Bernini Fountains recommends you register your new fountain. You can register on-line at berninifountains.com/register, by printing and mailing in a registration card available on-line from our website, by calling our customer care department at **1+ (619) 449-2392**, or by emailing us at customercare@berninifountains.com. Failure to register your fountain will not diminish your warranty rights. However, registering your fountain will allow Bernini Fountains to better serve you with any of your customer care needs.

FIRST THINGS FIRST:

Bernini Fountains is dedicated to our customers. We strive to make your customer care experience as pleasurable as possible. With that being said, there are always circumstances beyond our control when a fountain doesn't work or breaks under normal operating conditions. We think it's important that you know what you can expect from us. This is why we have a limited one year warranty on our fountains.



HAS YOUR BERNINI EXPERIENCE LEFT YOU HAPPY?

Tell your friends, tag us and leave us a review! We would love to hear your feedback! Share your experience by writing comments and reviews on berninifountains.com or connect with us on social media!

#BERNINIFOUNTAINS



OR HAS SOMETHING LEFT YOU WANTING MORE?

We're sorry to hear that! Our friendly Customer Care Team is ready to assist you in any way possible to resolve any issues you may have, Monday - Friday 8:30am to 4:00pm PST, 11:30am to 7:00pm EST

CALL US, EMAIL US, CHAT WITH US



PHONE:
1+ (619) 449-2392



EMAIL:
customercare@berninifountains.com



WEB:
www.berninifountains.com



FB: Bernini Fountain
Company



PINTEREST: Bernini
Fountain Company



INSTAGRAM:
[@berninifountains](https://www.instagram.com/berninifountains)



TWITTER:
[@bernydlic](https://twitter.com/bernydlic)

PLEASE READ FIRST BEFORE RETURNING

- Please call us for assistance at 1+ (619) 449-2392 or email us at customercare@berninifountains.com
- Our Customer Care Department is available:
Monday - Friday 8:30am to 4:00pm PST, 11:30am to 7:00pm EST
- If you have any questions regarding assembly, parts or operation, please visit our website at www.berninifountains.com.
- At berninifountains.com you will find instructional videos on how to assemble and operate your fountain and you can view our newest products.
- This product comes with a one year limited warranty against materials and workmanship, see page 21.
- Please review the list of accessories included with your Bernini™ Fountain on the next page. Please note, images of parts are not to scale with one another.

About Trapani:

Trapani is a city in western Sicily with a crescent-shaped coastline. At the western tip, offering views as far as the Aegadian Islands, is the 17th-century Torre di Ligny watchtower. The "City of Salt and Sail". For over 2000 years the lagoon between Marsala and Trapani has been supplying salt, making both towns rich.

PARTS



FOR YOUR

BERNINI™ FOUNTAIN



**Battery Compartment,
Water Tube &
Water Pump**



Cap



**Infinity Bowl/Planter
/Bird Feeder**

Shower Umbrella



**Pirouette
Dancing Water
Attachments**



Fountain Base



3 Prong Foot

**Items/Tools Required:
(Not Included)**

- Philips Screwdriver
- 4 D Cell Batteries



CONTENTS

PAGE:

- 1. STEP 1: BATTERY INSTALLATION**
2. Inserting Batteries Into The Battery Compartment
- 3-4. Installing Batteries
5. Assembling Battery Compartment Housing & Battery Cover
6. Assembling the Water Pump, Water Tube to Battery Compartment
- 6-7. Changing The Batteries
- 8. STEP 2: SETTING UP YOUR FOUNTAIN**
9. Fill Your Fountain
- 9-10. Operating Your Fountain
- 10-11. Dancing Water Attachments
- 12. STEP 3: 3-IN-1 INFINITY BOWL/BIRD FEEDER/PLANTER BOWL**
13. Infinity Bowl
13. How The Self-Watering System Works
14. Planter
15. Bird Feeder
- 16. TROUBLESHOOTING AND MAINTENANCE**
16. Water Pump Connection
17. Priming the Water Pump
17. Cleaning Your Fountain
- 17-18. Cleaning Your Water Pump's Parts
- 18-19. Cleaning Your Water Pump Impeller
19. Cold Storage
20. Troubleshooting Guide
21. Limited Warranty Information

STEP 1

BATTERY INSTALLATION

You will need:



**Fountain
Assembled**



**Battery Compartment
Water Tube & Water Pump**

**Items/Tools Required:
(Not Included)**

- Philips Screwdriver
- 4 D Cell Batteries



INSERTING BATTERIES INTO THE BATTERY COMPARTMENT



Figure 1a

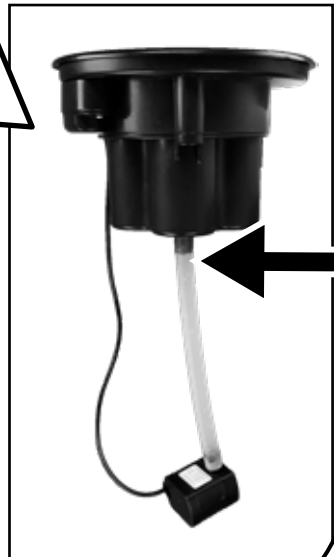


Figure 1b

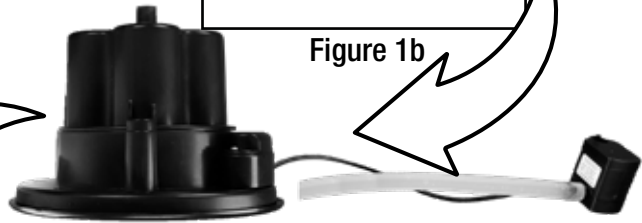


Figure 1c



Battery Compartment Retaining Screws X2

Figure 1d



INSTALLING BATTERIES

NOTE: The Battery Housing utilizes screws that are captive in the Battery Housing. When they are loosened they will stay within the Battery Housing and will not come loose (Arrow A & B Figure 2c).

1. (If Battery Compartment & Water Pump are installed into the Topper) Lift out of the Topper (Figure 1a). Disconnect the Water Tube from the Battery Compartment (A Figure 1b&c).
2. Unscrew (counter clockwise) the Battery Compartment Screws and open cover (Figure 1d). Note: Cover fits tightly and may take some effort to separate. If screws continue to turn compartment is completely unscrewed.
3. Fountain requires 4 D batteries (Not Included). Insert x2 D Batteries with the (+) side facing up in Battery Compartment and x2 D Batteries with the (-) facing up in Battery Compartment (Figure 2a).

NOTE: Flat or negative side of battery will rest on springs.

4. Reinstall the Fountain Top by aligning the locating dowel in the Battery Compartment and Fountain Top (Figure 1e white arrow). Set the Battery Cover down onto the Battery Compartment ensuring the dowel sets into the alignment hole.
6. Apply pressure and tighten the Battery Cover Screws by turning clockwise.

NOTE: Pressure must be applied to the Battery Compartment while tightening the screws to assure the compartment is properly sealed. If needed, while holding battery compartment, place it upside down on an even surface to tighten screws (Figure 2a, 2b & 2c).

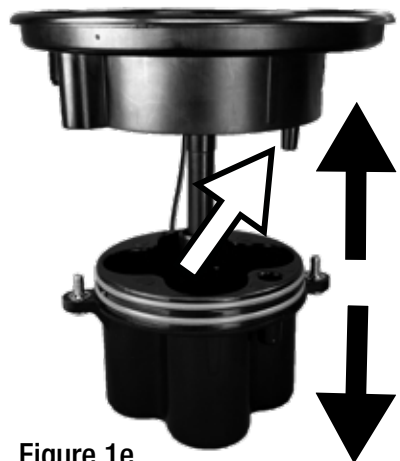
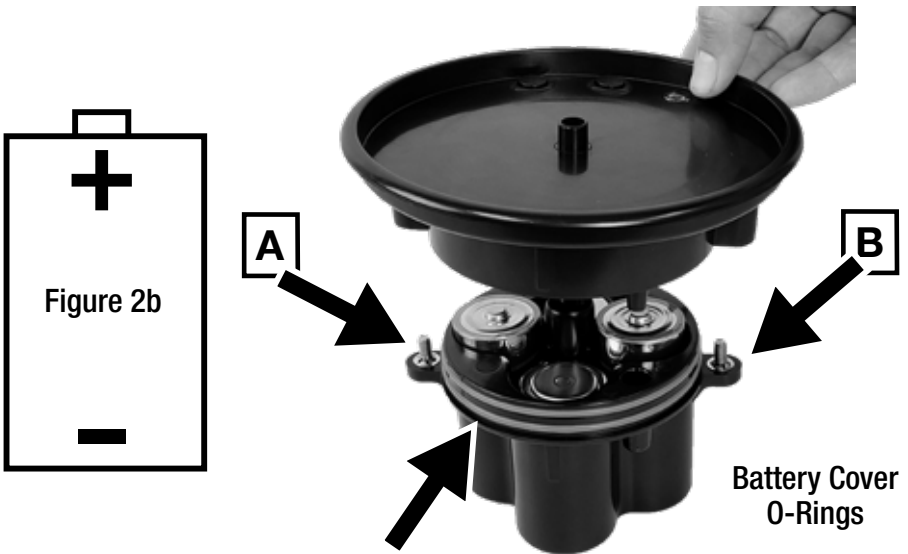
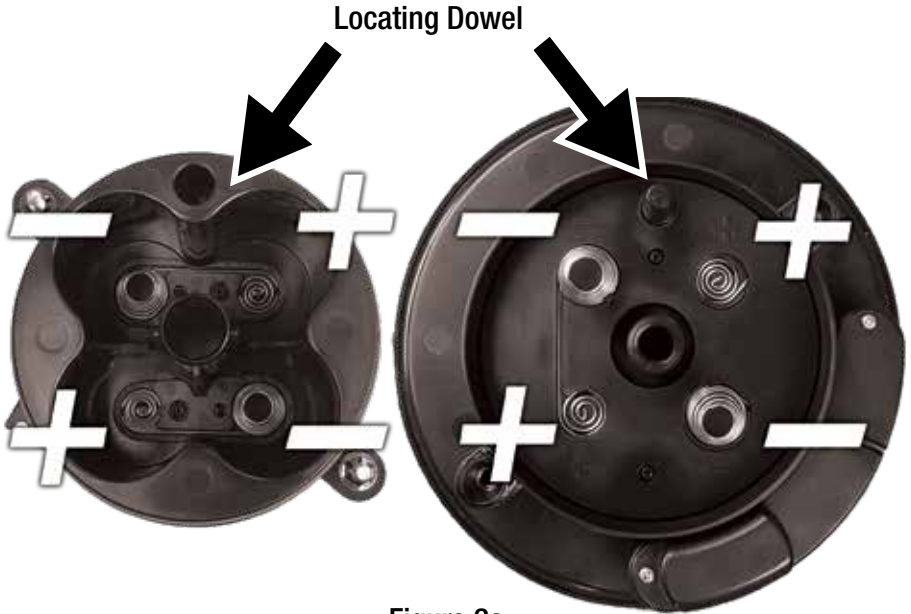
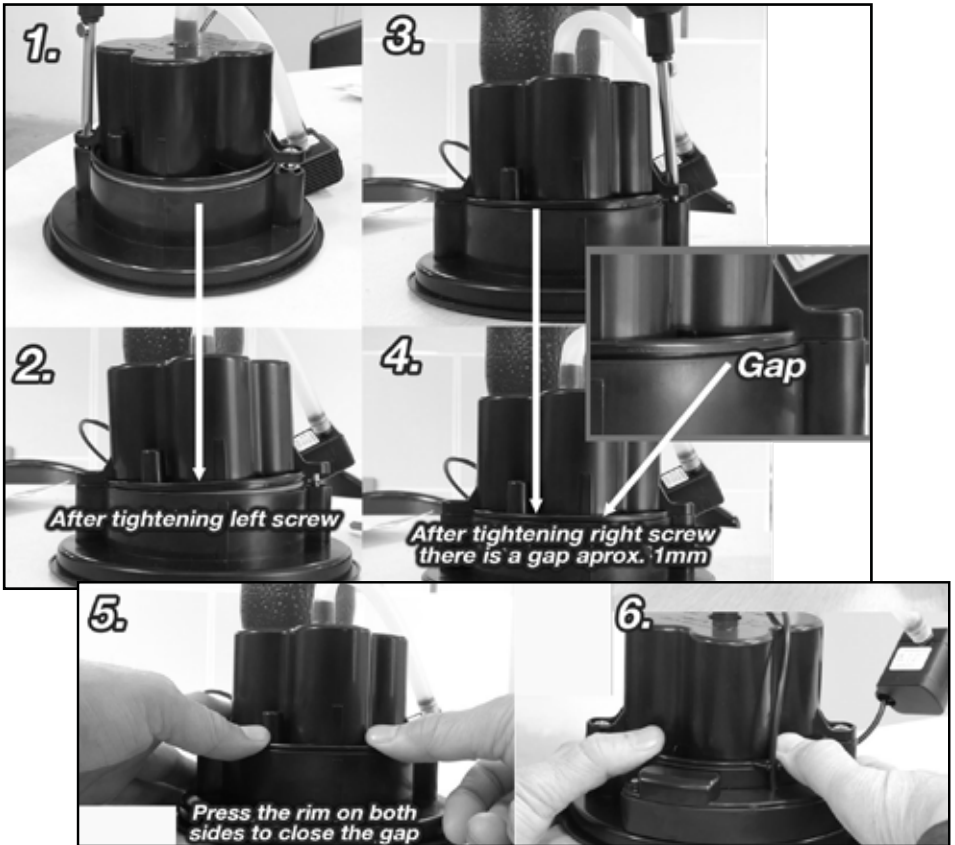


Figure 1e

INSTALLING BATTERIES (CONTINUED)



ASSEMBLING BATTERY COMPARTMENT HOUSING & COVER



1. Place Battery Cover on Battery Compartment Housing. Turn over assembled Battery unit and place on a flat, level surface. Using a Phillips screwdriver (not included) alternate tightening both screws down firmly.
2. After both screws have been tightened, you may notice a small gap between the Battery Cover and the Battery Compartment Housing.
3. Press down firmly on the bottom of the Battery Compartment Housing to help tighten the gap.
4. Re-tighten the screws (left screw first, right screw second) to close the gap between the Battery Cover and the Battery Compartment Housing.

ASSEMBLING THE WATER PUMP, WATER TUBE TO BATTERY COMPARTMENT

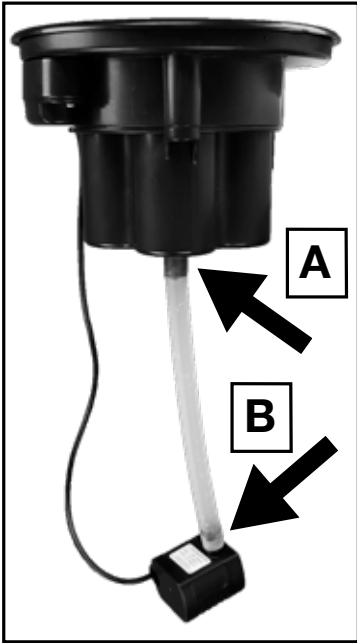


Figure 3a



Figure 3b

1. Connect one side of the Water Tube to the Water Pump and the other end of the tube to the bottom side of the Battery Compartment (A & B of Figure 3a).
2. Lower the Battery Compartment and Water Pump into the Topper. Battery Compartment and Water Pump should be flush with Topper (Figure 3e).
3. Set into the Bowl of your choice (not Included) (Figure 4d).

CHANGING THE BATTERIES

1. Remove any Dancing Water Attachment.
2. Lift Battery Compartment and Water Pump out of the Fountain (Figure 4a).

NOTE: When changing batteries, ensure Battery Compartment and Water Pump are completely dry before opening Battery Compartment to prevent water from getting inside.

CHANGING THE BATTERIES (CONTINUED)



Figure 4a

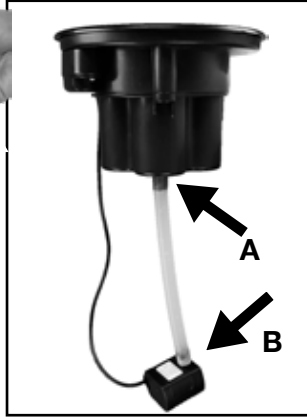


Figure 4b



Figure 4d



Figure 4c



Figure 4d



At this point, your fountain should look like the image on the right.



GO TO THE NEXT PAGE TO CONTINUE WITH SETUP OF YOUR FOUNTAIN.



STEP 2

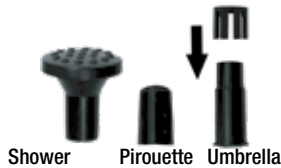
SETTING UP YOUR FOUNTAIN

You will need:



**Fountain
Assembled**

WATER TO
FILL YOUR
FOUNTAIN



**Dancing Water
Attachments**

FILL YOUR FOUNTAIN

- Fill Bowl with water. Depending on bowl size or depth, ensure water does not touch bottom of battery housing.
- To dislodge any air bubbles from the pump, grab both sides of the large bowl and quickly shake your fountain for ten seconds.
- Press the button once to turn your fountain on. Water should be flowing from the top of your fountain.
- If water is not flowing, press the button once more to turn your fountain off and repeat the step above.

OPERATING YOUR FOUNTAIN

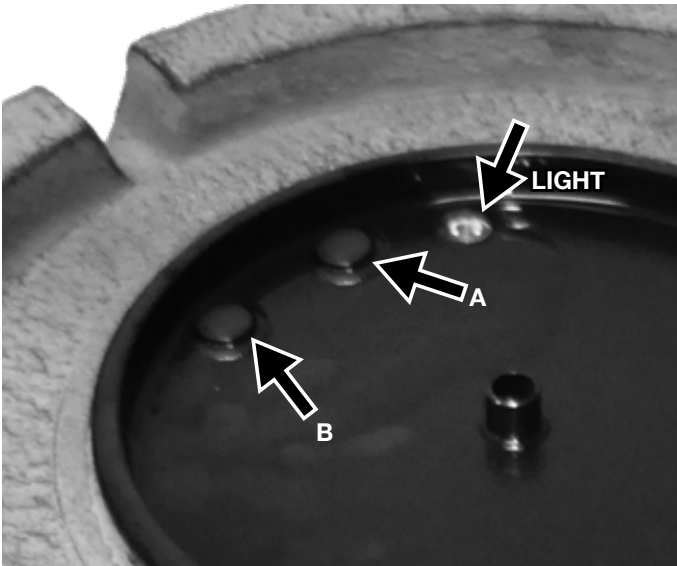


Figure 5

Turn Fountain on and off:

- The A Button is the manual on and off button.
- **With the Fountain off, press the A button:** The fountain will run for a maximum of 6 hours or until the A button is pressed again which will shut the fountain off.

OPERATING YOUR FOUNTAIN (CONTINUED)

Programing The Fountain:

- **Press the A Button 2 times:** Clears out all programing.
- **Press the B Button 1 time:** Will program the fountain to run for 1 hour each day at the same time. The light (Figure 5), will flash once to confirm your selection.
- **Press the B Button 2 times:** Will program the fountain to run for 2 hours each day at the same time. The light (Figure 5), will flash twice to confirm your selection.
- **Press the B Button 3 times:** Will program the fountain to run for 3 hours each day at the same time. The light (Figure 5), will flash 3 times to confirm your selection.
- **Press the B Button 4 times:** Will program the fountain to run for 4 hours each day at the same time. The light (Figure 5), will flash 4 times to confirm your selection.
- **Pressing the B Button more than 4 times:** Pressing the B Button a fifth time will shut off the fountain. If this is done by mistake and you want to ensure that a timer is set, press the A button twice to reset the system (which will turn the fountain on and off), then press the B button as indicated above to set the timer for the desired interval time.

Reset/Change the timer:

- Press the A button twice to clear out any timers programmed into the B Button. If you want to reset the timer, set the B Button Programing as in the "Programing The Fountain" Section above (Figure 5).

DANCING WATER ATTACHMENTS: (OPTIONAL)

You can put any of the Dancing Water Attachments on the Fountain whether the Fountain is running or is not running.

- Select one of the Dancing Water Attachments and place on the outlet in the middle of the Battery Compartment (Figure 6a, 6b & 6c).

NOTE: Please be aware that there is over-spray that occurs while using the Dancing Water Attachments.



DANCING WATER ATTACHMENTS OPTIONAL (CONTINUED)

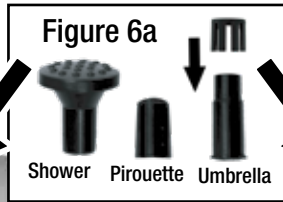
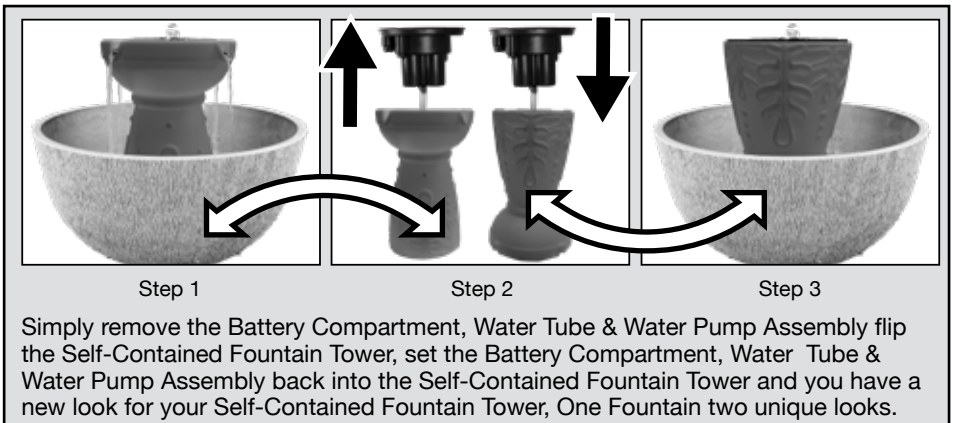


Figure 6b



Figure 6c

FLIPPING THE SELF-CONTAINED FOUNTAIN TOWER



Simply remove the Battery Compartment, Water Tube & Water Pump Assembly flip the Self-Contained Fountain Tower, set the Battery Compartment, Water Tube & Water Pump Assembly back into the Self-Contained Fountain Tower and you have a new look for your Self-Contained Fountain Tower, One Fountain two unique looks.



You can now try your fountain to see if everything is working correctly! Turn your fountain on and you should see water flowing from the outlet on the top of the Topper. **If water is not flowing, please refer to the “Priming The Water Pump” in the “Troubleshooting & Maintenance” Section.**



THE FOLLOWING SECTION COVERS THE 3-IN-1 INFINITY BOWL/BIRD FEEDER/PLANTER BOWL.



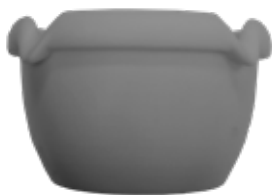
STEP 3

3-IN-1 INFINITY BOWL BIRD FEEDER PLANTER BOWL

You will need:



3 Prong Foot



**Infinity Bowl/Planter
/Bird Feeder**



Cap

INFINITY BOWL

To install the Bowl as an Infinity Pool:

- Take the Bowl and the Cap, screw the Cap into the inside of the bowl turning clockwise (Figure 1, 2 & 3). **DO NOT OVER TIGHTEN.**
- Place infinity Bowl on the fountain spout just as you would place one of the Dancing Waters Attachments.
- Push button to enjoy your fountain.



Figure 1



Figure 2



Figure 3

HOW THE SELF-WATERING SYSTEM WORKS

Your self-watering garden fountain waters from the bottom up. Do not worry if you do not see the top soil becoming wet after the first day or two of use. The bottom layer of the soil will be watered every time you run the fountain. After approximately 3 days, the soil will reach its maximum water level. The water will steadily climb to just below the surface of the soil, while your fountain is on, the water level rises, watering your plant from bottom to top. (Figure 5).

When your fountain is off, the roots of your plant will be aerated to produce strong healthy roots. When the fountain is on, the water level will rise above the surface of the top planter bowl, saturating the soil (Figure 6).



Figure 4

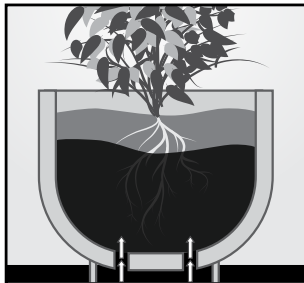


Figure 5

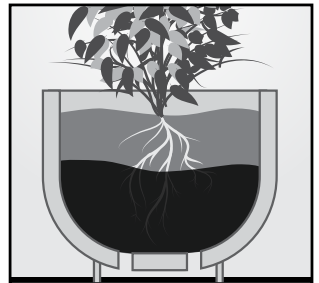


Figure 6

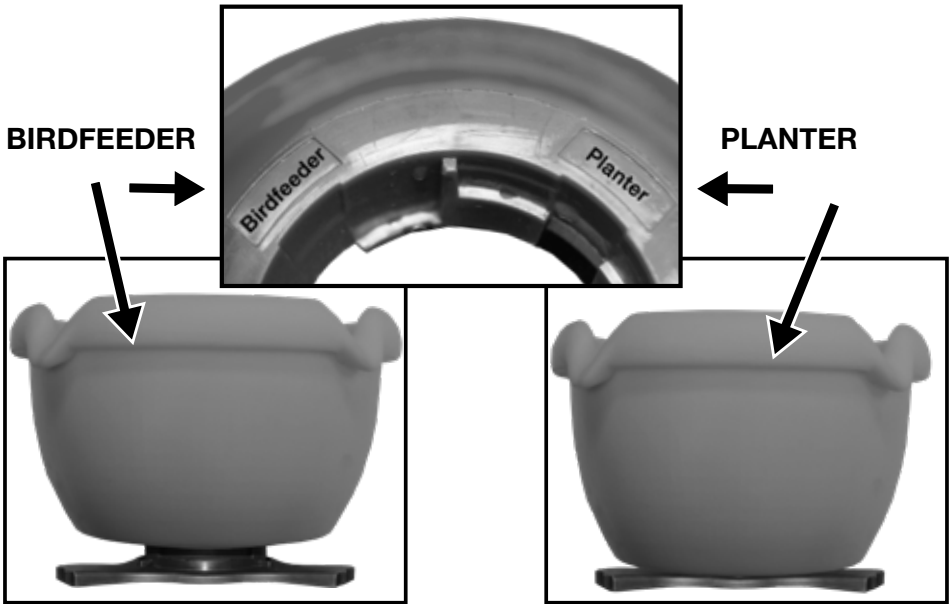


Figure 7

Figure 8

PLANTER

To install the Bowl as a Planter:

- Take the Bowl and 3 Prong Foot, line up the arrows (Figure 11 white circle) on the 3 Prong Foot to the “Planter” position located on the bottom of the bowl (Figure 8).
- Align the arrows and push firmly to lock in place.
- There are 2 small holes on the bottom of the planter that will allow water to be absorbed from the bottom of the bowl when fountain is running (Figure 4, 5 & 6).
- Place the Bowl and Foot on top of the fountain. Be sure to not cover the button or light on top of the fountain.
- Push on 3 Prong Foot to secure.
- Once Planter is in place use your favorite soil (do not over pack) and plant your new addition to your family.
- Push button to enjoy your fountain.





Figure 9

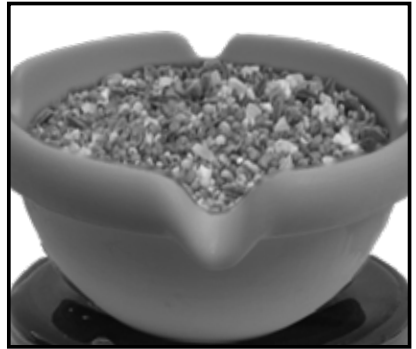


Figure 10

BIRD FEEDER

To install the bird feeder:

- Take the Infinity bowl and 3 prong foot, line up the arrows (Figure 11 white circle) on the 3 prong foot to the bird feeder position located on the bottom of the bowl (Figure 9 & 10).
- Align the arrows and push firmly to lock in 3 prong foot.
- Place the bowl and foot on top of the fountain.
- Be sure to not cover the button or light on top of the fountain.
- Push on 3 prong foot to secure.
- Fill bowl with bird food, avoid over-filling to prevent bird seed from going in your fountain.
- Push button to enjoy your fountain.



Figure 11

TROUBLESHOOTING AND MAINTENANCE

WATER PUMP CONNECTION

If your fountain's water pump tube becomes disconnected from pump and or Battery Compartment use these instructions to reconnect your water pump.



Before beginning, remove the Battery Assembly from Topper. Step 1: Lift the Battery Assembly out of the Topper to access pump and tube.



Step 2: Rest the Battery and Pump Assembly on its side. Check the connection at the top of the water tube at the Battery Housing. Reconnect if needed.



Step 3: Check the connection at the bottom of the water tube at the Water Pump. Reconnect if needed.



Step 4: Reassemble the Battery and Pump Assembly in reverse of removal or refer to the instructions in the Battery and Pump Assembly section of this manual.



PRIMING THE WATER PUMP

If you find the Water Pump is running, but water is not flowing from your Fountain, you can try priming the Water Pump:

- **Turn off Fountain:** Grab both sides of the Fountain and quickly shake your Fountain for ten seconds. This is to dislodge any air bubbles that may be caught in your Water Pump.
- **Press the button to turn your Fountain on:** Water should be flowing from the top of your fountain. If water is not flowing, **press and hold button for over two seconds again to turn your Fountain off** and repeat the step above.

CLEANING YOUR FOUNTAIN

To keep your fountain in tip top shape and for a prolonged life It is important to keep your fountain clean.

- To clean your fountain, drain of all water and disassemble
- Use a mild soap and a soft cloth to clean the parts of your fountain.
- **DO NOT SCRUB YOUR FOUNTAIN, THIS COULD CAUSE DAMAGE TO THE FINISH OF YOUR FOUNTAIN.**

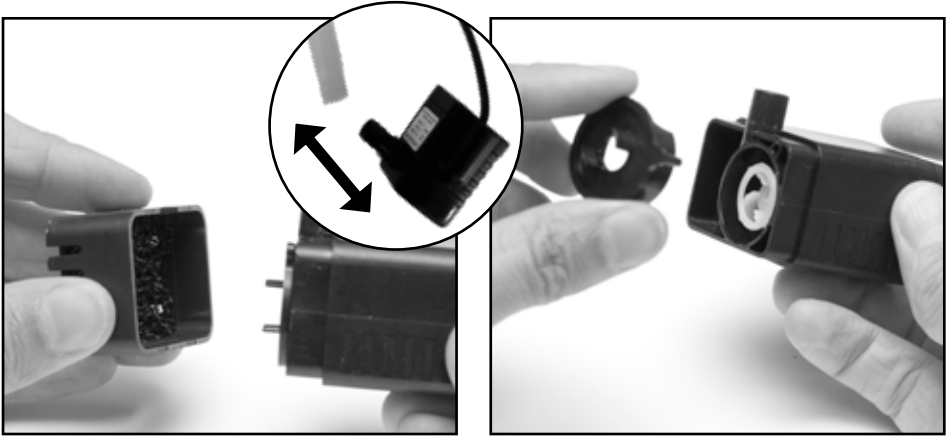
CLEANING YOUR WATER PUMP'S PARTS

After about six weeks of usage, clean the water pump's impeller to keep your fountain in tip-top shape. The water pump impeller inside of the water pump is what pushes water up through the fountain. Clean the water pump impeller to make sure your fountain runs optimally.

- Drain the fountain of all water prior to cleaning the water pumps' parts.



CLEANING YOUR WATER PUMP'S PARTS (CONTINUED)

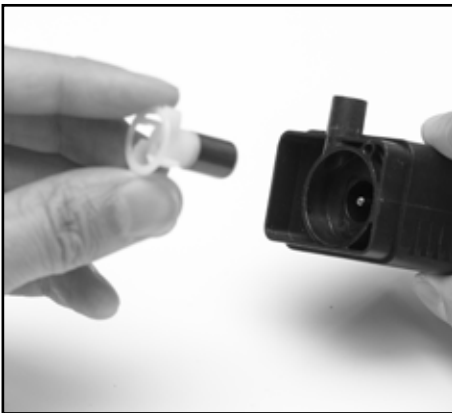


Begin by disconnecting the pump from the water tube. (See inset image)

Step 1: Remove the front of the water pump by grabbing the sides of the front panel and pull it off the unit.

Step 2: Remove the impeller chamber cover. This is tightly fitted on to the impeller chamber, but will come off.

CLEANING YOUR WATER PUMP IMPELLER



Step 3: Remove the impeller from its chamber.



Step 4: Rinse the impeller and the impeller chamber until all debris has been removed.



CLEANING YOUR WATER PUMP IMPELLER (CONTINUED)

Reassembly is the reverse of disassembly.

- Replace the impeller in the impeller chamber.
- Put the impeller chamber cover back on.
- Replace the pump's front panel.

COLD STORAGE

- Turn power off
- Remove fountain from container.
- Clean and dry the fountain of all water.
- Remove the batteries for long term storage and bring the fountain indoors.

Now is a great time to clean the pump to remove any debris that may have accumulated throughout the year.



TROUBLESHOOTING AND MAINTENANCE

PROBLEM	SOLUTION
Fountain is not working	Check that batteries have a full charge: (See Changing Battery Section).
Water Not Flowing	Prime Pump as instructed. (Refer to Priming The Water Pump).
	Check batteries are installed correctly: (See Installing Battery Section).
	Check that batteries have a full charge: (See Changing Battery Section).
	Check water level.
	Check pump is free of debris, kinks or obstructions. (See Troubleshooting section).
	Check water tube is connected properly. (See Base and Fountain Bowl Installation Section).
Loud Pump	Prime Pump as instructed. (Refer to Priming The Water Pump Section)
	Check water level.
	Check pump is free of debris, kinks or obstructions. (See Troubleshooting section)
Fountain Settings not working	Check that batteries have a full charge: See Changing Battery Section.
Low Water Flow	See Changing Battery Section.
	Check pump is free of debris, kinks or obstructions. See Troubleshooting section.
	Check water level.
	Pump is cavitating. See Priming The Water Pump Section.
Suddenly Stops	Check pump is free of debris, kinks or obstructions. See Troubleshooting section.



LIMITED ONE YEAR WARRANTY

This product has a one year limited warranty on all materials and workmanship. Bernini™ warrants the original purchaser of this product that the product will be free from manufacturing defects in workmanship and material for a period of one (1) year from the date of original purchase.

If within one (1) year this product fails due to defect in material or workmanship, Bernini™ will repair, replace or supply any defective part at their discretion.

The purchaser must contact Bernini™ and provide a description of the defective part, including digital pictures if requested, with this original purchase documentation as validation of warranty coverage.

This warranty does not cover or apply to: (a) damage to the product due to misuse, mishandling, and abuse, (b) products not used in accordance with instructions, (c) product not assembled or installed according to instructions, and (d) normal wear and tear.

Call for assistance at 1+ (619) 449-2392 or you can email us at:
customer care@berninifountains.com

Our Customer Care Department is available:
Monday - Friday 8:30am to 4:00pm PST / 11:30am - 7:00pm EST



IMPORTANT BATTERY SAFETY INSTRUCTIONS

DANGER: Do not store battery in an airtight container as it may cause an explosion.

WARNING: When using electric devices, basic safety precautions should always be followed to reduce the risk of fire, electric shock and personal injury, including the following:

WARNING:

1. Do not incinerate the battery even if it is severely damaged or is completely worn out.
 - The battery can explode in a fire.
 - Check with municipal codes in your area for possible special battery disposal instructions.
2. If liquid leaks from the battery cell, discontinue use immediately and dispose of batteries properly.
3. Use only 4-1.5V D Cell Batteries.
4. Do not mix old and new batteries.
5. Do not mix alkaline, standard (Carbon-zinc), or rechargeable (Ni-Cd, Ni-Mh, etc) batteries.
6. Do not attempt to disassemble, remodel or destroy the batteries, as it may cause battery leakage, fire, or bursting.
7. Never dispose of batteries in the garbage.
 - Disposal of batteries in the garbage is unlawful under state and federal environmental laws and regulations.
 - Always take used batteries to your local battery-recycling center.



THANK YOU FOR SELECTING BERNINI FOUNTAINS

We're excited to offer you the highest quality fountains with the reliability you need! We would love to hear if you have any suggestions or ideas that can be incorporated into new or enhanced features. We hope you have many years of enjoyment from your fountain and we look forward to hearing from you.



Scan this QR code for the latest version of these instructions



PHONE:
1+ (619) 449-2392



EMAIL:
customercare@berninifountains.com



WEB:
www.berninifountains.com



FB: Bernini Fountain Company



PINTEREST: Bernini Fountain Company



INSTAGRAM:
@berninifountains



TWITTER:
@yrdllc

Santee, California 92071

World Wide Patents Pending

© Yeiser Research & Development, LLC; 2022. All rights reserved.