

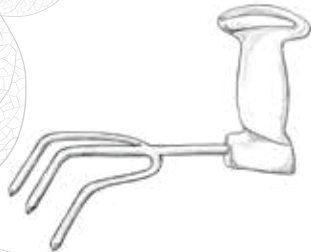
# BERNINI™ Ergonomic Tool Set

# Owners Manual

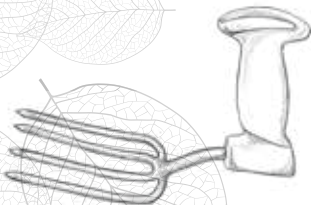
## WHAT YOU GET: Set of 3 Ergonomic Gardening Tools



Garden Trowel



Garden Cultivator



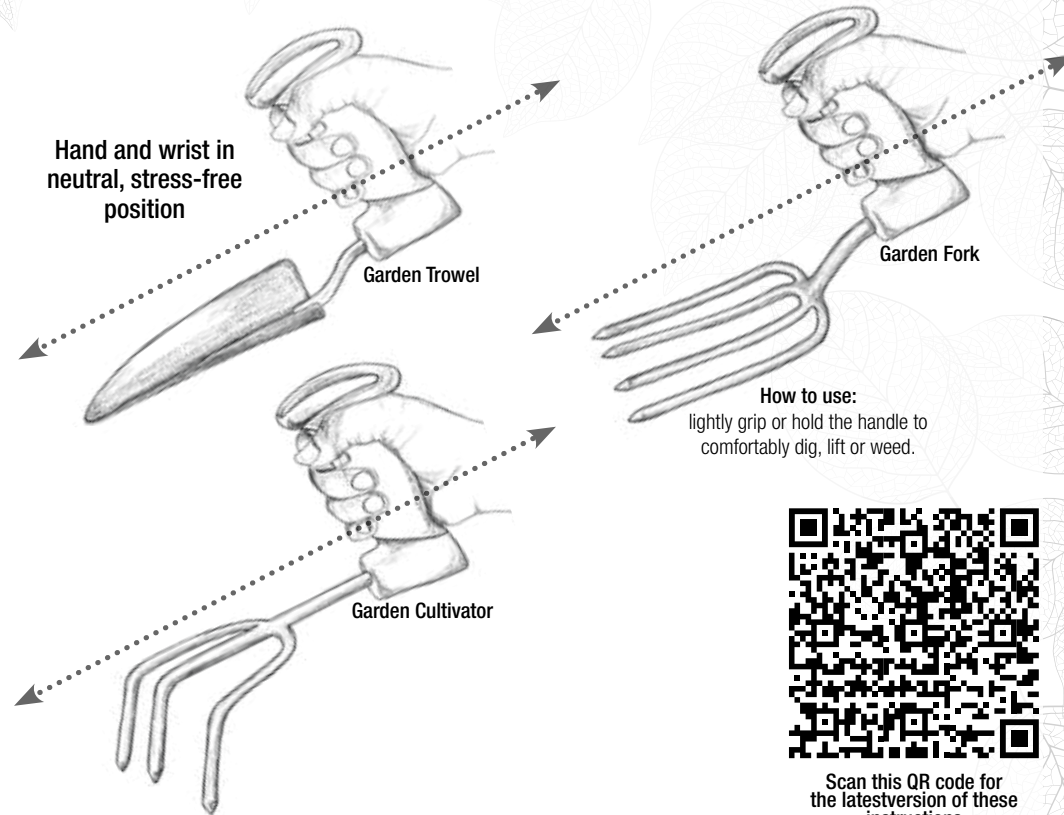
Garden Fork

## Ergonomic Garden Tools Uses:

Garden Trowels are used for digging small holes for planting bulbs, annuals or perennials. They can also be used to dig up weeds.

A Garden Cultivator. This garden tool is designed for weeding and loosening the surface of your soil. A Garden Cultivator is a gardening tool that is used to turn the soil where you plan on planting and for removing weeds. In small flower or vegetable gardens, it can also be used like a small plow to dig the planting rows.

A Garden Fork is good for fluffing up the surface and for lifting plants from the soil. Because they are often used for digging up weeds, hand forks are sometimes referred to as 'weeding forks'. But they are suited to many jobs around the garden, such as preparing planting holes, transplanting, aerating and mixing additives into your soil and are indispensable for leveling around border edges and tidying.



## LIMITED ONE YEAR WARRANTY

This warranty gives you specific legal rights and you may also have other rights which vary from state to state. This product has a one year limited warranty on all materials and workmanship. Bernini Fountains™ warrants the original purchaser of this product that the product will be free from manufacturing defects in workmanship and material for a period of one (1) year from the date of original purchase. If within one (1) year this product fails due to defect in material or workmanship, Bernini Fountains™ will repair, replace or supply any defective part(s) at their discretion. The purchaser must contact Bernini Fountains™ and provide a description of the defective part, including digital pictures if requested, with this original purchase documentation as validation of warranty coverage. This warranty does not cover or apply to: (a) damage to the product due to misuse, mishandling, and abuse, (b) products not used in accordance with instructions, (c) product not assembled or installed according to instructions, and (d) normal wear and tear.

Call us for assistance at +1 (619) 449-2392 or you can email us at [customer@berninifountains.com](mailto:customer@berninifountains.com) or mail us at: 9545 Pathway Street, Santee, CA 92071, Our Customer Care Department is available: Monday - Friday 8:30am to 4:00pm PST /11:30am - 7:00pm EST

## Please read first before returning:

Please call us for assistance at +1 (619) 449-2392 or email us at [customer@berninifountains.com](mailto:customer@berninifountains.com). Our Customer Care Department is available: Monday - Friday 8:30am to 4:00pm PST, 11:30am to 7:00pm EST. If you have any questions regarding assembly, parts or operation, please visit our website at [www.berninifountains.com](http://www.berninifountains.com). On our website, you will find instructional videos on how to assemble and operate your fountain and you can keep up to date on our newest products. This product comes with a one year limited warranty against materials and workmanship.

Santee, California 92071 | World Wide Patents Pending | Email: [customer@berninifountains.com](mailto:customer@berninifountains.com) | On the web: [www.berninifountains.com](http://www.berninifountains.com)  
Facebook & Pinterest: Bernini Fountain Company | Instagram: [@berninifountains](https://www.instagram.com/berninifountains) Twitter: [@berndlc](https://twitter.com/berndlc)  
© Yeiser Research & Development, LLC; 2022. All rights reserved.  
Made in China | Designed in the USA



Scan this QR code for the latest version of these instructions



Remember if you need help contact Customer Care: 1+ (619) 449-2392

001331 BFET1 rev 2a US