

# BERNINI™

F O U N T A I N S



ROMAN FLIPPABLE FOUNTAIN  
TOWER WITH 3-IN-1 FINAL  
Owner's Manual

# BERNINI<sup>TM</sup>

F O U N T A I N S

---

## **PLEASE READ FIRST BEFORE RETURNING**

**Please call us for assistance at 1+ (619) 449-2392  
or email us at [customer@berninifountains.com](mailto:customer@berninifountains.com)**

**Our Customer Care Department is available:**

**Monday - Friday 8:30am to 4:00pm PST, 11:30am to 7:00pm EST**

If you have any questions regarding assembly, parts or operation, please visit our website at [www.berninifountains.com](http://www.berninifountains.com). At [berninifountains.com](http://berninifountains.com) you will find instructional videos on how to assemble and operate your fountain and it will keep you up to date on our newest products. You can also email us with any questions you have.

This product comes with a one year limited warranty against materials and workmanship.

**Please review the list of accessories included with your Bernini<sup>TM</sup> Fountain on the next page. Please note, images of parts are not to scale with one another.**

### *About Roman:*

*Due to the vastness of it's empire, Roman art and architecture had a profound and lasting influence in the ancient world that stands strong today. This Roman-inspired fountain will have a profound effect on your home decor.*

# Parts to your new Bernini™ Fountain:



Flippable  
Fountain Tower Base



3 Prong Foot



Infinity Bowl/Planter  
/Bird Feeder



Light Dome



Cap



Dancing Water  
Attachments



Battery Compartment, Lights,  
Water Tube & Water Pump

# CONTENTS

- 1 Step 1: Battery Installation**
- 2 Inserting Batteries Into The Battery Compartment
- 2 Installing Batteries
- 3 Assembly Of Battery Compartment Housing & Battery Cover
- 3 Assembly Of Water Pump & Tube To Battery Compartment
- 4 Changing Batteries
- 5 Step 2: Setting Up Your Fountain**
- 6 Fill Your Fountain
- 6 Operating Your Fountain
- 6 The Light Dome
- 7 Dancing Water Attachments
- 7 Flipping The Self-Contained Fountain Tower
- 8 Step 3: 3-in-1 Infinity Bowl/Bird Feeder/Planter Bowl**
- 9 Infinity Bowl
- 9 How the Self-Watering System Works
- 10 Planter
- 11 Bird Feeder
- 12 Troubleshooting and Maintenance**
- 12 Cleaning Your Fountain
- 12 Cold Storage
- 12 Cleaning the Water Pump's Parts
- 12 Water Pump Impeller
- 13 Priming the Water Pump
- 13 Water Pump Connection
- 14 Troubleshooting Guide

# Step 1:

## Battery Installation

### You will need:



Flippable  
Fountain Tower Base

Battery Compart-  
ment, Water Tube  
& Water Pump



## Inserting Batteries Into The Battery Compartment



Figure 1a



Battery Compartment Retaining  
Screws X2

Figure 1b

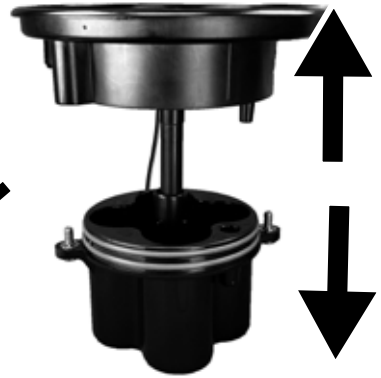


Figure 1c

## Installing Batteries:

1. (If Battery Compartment & Water Pump are installed into the Fountain Tower) Lift the battery compartment out of the Fountain Tower (Figure 1a). Disconnect the Water Tube from the Battery Compartment (A Figure 3a).
2. Unscrew (counter clockwise) the Battery Compartment Screws. The screws DO NOT come out of the battery compartment. When the screw continues to spin or you hear a click, the screw is unscrewed completely (Figure 1b & 1c). Note: Cover fits tightly and may take some strength to pull apart.
3. Fountain requires 4 D batteries (Not Included), insert x2 D Batteries with the negative (-) side facing down in Battery Compartment (Figure 2a). The negative side of the battery will be resting on the raised coil/spring. Then insert the other 2x D Batteries with the positive (+) side facing down in the Battery Compartment. (Figure 2a).
4. Reinstall the Fountain Top by aligning the locating dowel in the Battery Compartment and Fountain Top. Set the Battery Cover down onto the Battery Compartment ensuring the dowel sets into the alignment hole. Apply pressure and tighten the Battery Cover Screws by turning clockwise. NOTE: Pressure must be applied to the Battery Compartment while tightening the screws to assure the compartment is properly sealed. If needed, while holding battery compartment, place it upside down on an even surface to tighten screws (Figure 2a, 2b & 2c).

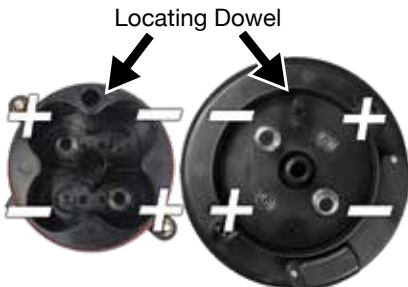


Figure 2a

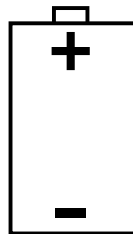


Figure 2b



Battery Cover  
O-Rings

Figure 2c



## Assembly Of Battery Compartment Housing & Cover:



1. Place Battery Cover on Battery Compartment Housing. Turn over assembled Battery unit and place on a flat, level surface. Using a Phillips screwdriver (not included), first tighten left screw down firmly.
2. After tightening the left screw, you will notice a small gap between the Battery Cover and the Battery Compartment Housing.
3. Using a Phillips screwdriver (not included), tighten the right screw down firmly.
4. After both screws have been tightened, you may notice a small gap between the Battery Cover and the Battery Compartment Housing.
5. Press down firmly on the bottom of the Battery Compartment Housing to help tighten the gap.
6. Using a Phillips screwdriver re-tighten the screws (left screw first, right screw second) to further tighten the gap between the Battery Cover and the Battery Compartment Housing.

## Assembly Of Water Pump & Tube To Battery Compartment:

1. Take the Battery Compartment and Water Pump, connect one side of the Water Tube to the Water Pump and the other end to the bottom side of the Battery Compartment (Figure 3a).
2. Lower the Battery Compartment and Water Pump into the Tower Base. Battery Compartment and Water Pump should be flush with the top of the Tower Base (Figure 3b).

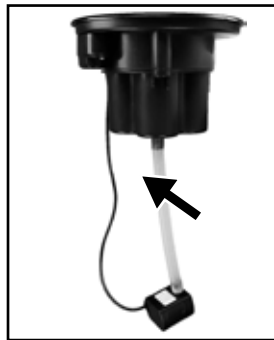


Figure 3a



Figure 3b



## Changing Batteries:

1. Remove any Dancing Water Attachments (Figure 5), lift Battery Compartment and Water Pump out of the Fountain (Figure 4a). Ensure Battery Compartment and Water Pump are completely dry before opening Battery Compartment. It is important that no water enters the Battery Compartment.
2. See Installing Batteries Section above on how to reinstall batteries and reassemble.
3. Set the Battery Compartment and Water Pump back into the Fountain (Figure 4d).



Figure 4a

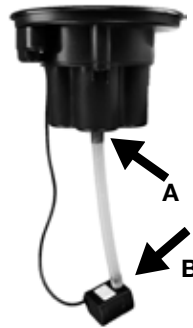


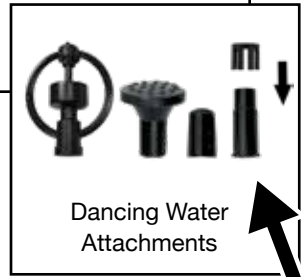
Figure 4b



Figure 4d



Figure 4c



Dancing Water Attachments

Figure 5



At this point, your fountain should look like the image on the left. Go to the next page to continue setting up your new Fountain.





# Step 2:

## Setting Up Your Fountain

### Water To Fill Your Fountain

#### You will need:



Fountain  
Assembled

Light Dome

Dancing Water  
Attachments



# Fill Your Fountain

After you have picked the container you want your fountain in, fill the container so that the water is about 1 inch (2.5 centimeters) and/or covers the pump. Next, After you have filled your fountain, to dislodge any air bubbles from the pump, grab both sides of the large bowl and quickly shake your fountain for ten seconds. Press the button once to turn your fountain on. Water should be flowing from the top of your fountain. If water is not flowing, press the button once more to turn your fountain off and repeat the step above.

# Operating Your Fountain

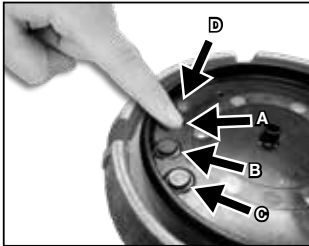


Figure 1a

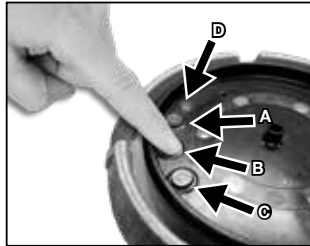


Figure 1b

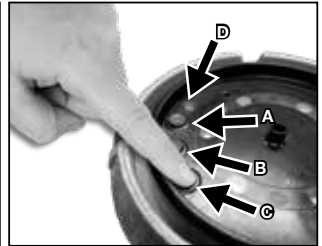


Figure 1c

The fountain includes three buttons (A, B & C) and an indicator light (D).

1. The A Button turns the fountain on and off. When pressed, the fountain will run continuously for 6 hours or until the button is pressed again, at which point it will turn off.
2. The B Button allows you to set a daily repeat timer.
  - \* Pressing the button once will turn the fountain on for one hour and then shut off. It will run again the following day at the same time for an hour and repeat that process daily. The light will flash once to indicate that a one-hour daily repeat timer has been set (the selection will be repeated three times).

- \* Pressing the button twice will turn the fountain on for two hours and then shut off. It will run again the following day at the same time for two hours and repeat that process daily. The light will flash twice to indicate that a two-hour daily repeat timer has been set (the selection will be repeated three times).

- \* Pressing the button three times will turn the fountain on for three hours and then shut off. It will run again the following day at the same time for three hours and repeat that process daily. The light will flash three times to indicate that a three-hour daily repeat timer has been set (the selection will be repeated three times).

- \* Pressing the button four times will turn the fountain on for four hours and then shut off. It will run again the following day at the same time for four hours and repeat that process daily. The light will flash four times to indicate that a four-hour daily repeat timer has been set (the selection will be repeated three times).

- \* Pressing the A button at any time will turn the fountain off.

3. The C Button turns the lights on and off.

- \* Pressing the C button while fountain running, lights will stay on for however long the fountain is running, whether the fountain is running manually (A button) or in programmed mode (B Button). Add to end of paragraph. Light will not turn on unless the fountain is running.

# The Light Dome

**LIGHT DOME: (OPTIONAL):** The fountain can be operated with or without the light dome. The Light Dome was designed to change the ambiance lighting of the fountain depending on the desired mood. (Figure 2a, 2b). You can install the light dome if the fountain is running or not.



Figure 2a



Figure 2b



## Dancing Water Attachments

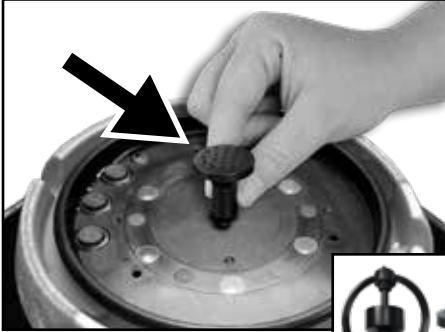


Figure 3b

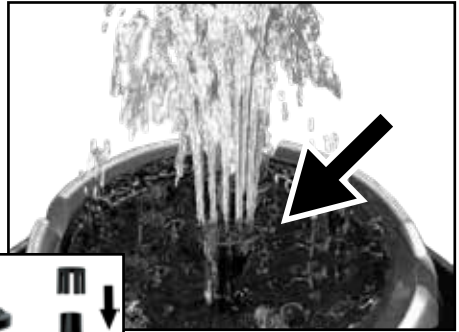


Figure 3c

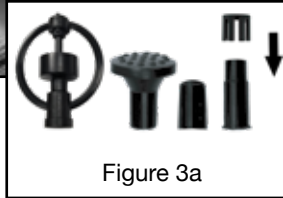


Figure 3a

**DANCING WATER ATTACHMENTS: (OPTIONAL):** You can put any of the Dancing Water Attachments on the Fountain whether the Fountain is running or is not running. Select one of the Dancing Water Attachments and place on the outlet in the middle of the Battery Compartment (Figure 3a, 3b & 3c).

**NOTE:** Please be aware that there is over spray that occurs while using the Dancing Water Attachments, we recommend you use a larger container for your fountain while using the attachments.

## Flipping The Self-Contained Fountain Tower



Step 1



Step 2



Step 3

Simply remove the Battery Compartment, Water Tube & Water Pump Assembly flip the Self-Contained Fountain Tower, set the Battery Compartment, Water Tube & Water Pump Assembly back into the Self-Contained Fountain Tower, now you have a new look for your fountain; one Fountain two unique looks.



You can now try your Bernini™ Fountain to see if everything is working correctly! Turn your fountain on and you should see water flowing from the outlet on the top of the Fountain Tower. **If water is not flowing, please refer to the "Priming The Water Pump" section.**

The following section covers any Troubleshooting and Maintenance issues as needed.



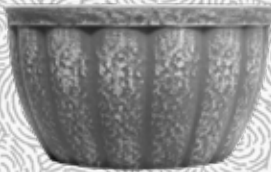
# Step 3:

## 3-in-1 Infinity Bowl/ Bird Feeder/ Planter Bowl

### You will need:



3 Prong Foot



Infinity Bowl/Planter  
/Bird Feeder



Cap





Figure 1

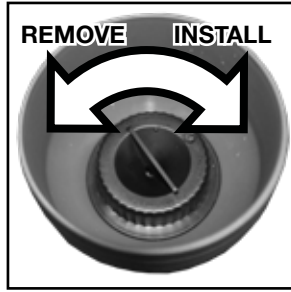


Figure 2



Figure 3

## Infinity Bowl

To install the Bowl as an Infinity Pool, take the Bowl and the Cap, screw the Cap into the inside of the bowl turning clockwise (Figure 1, 2 & 3). Do not over tighten. Place infinity Bowl on the fountain spout just as you would place one of the Dancing Waters Attachments. Push button to enjoy your fountain.

## How the Self-Watering System Works

Your self-watering garden fountain waters from the bottom up. Do not worry if you do not see the top soil becoming wet after the first day or two of use. The bottom layer of the soil will be watered every time you run the fountain. After approximately 3 days, the soil will reach its maximum water level. The water will steadily climb to just below the surface of the soil, while your fountain is on, the water level rises, watering your plant from bottom to top. (Figure 5).

When your fountain is off, the roots of your plant will be aerated to produce strong healthy roots. When the fountain is on, the water level will rise above the surface of the top planter bowl, saturating the soil (Figure 6).



Figure 4

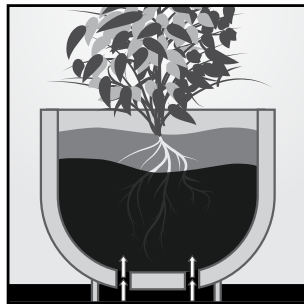


Figure 5

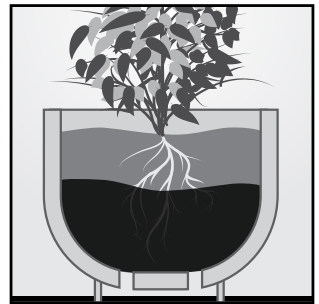


Figure 6



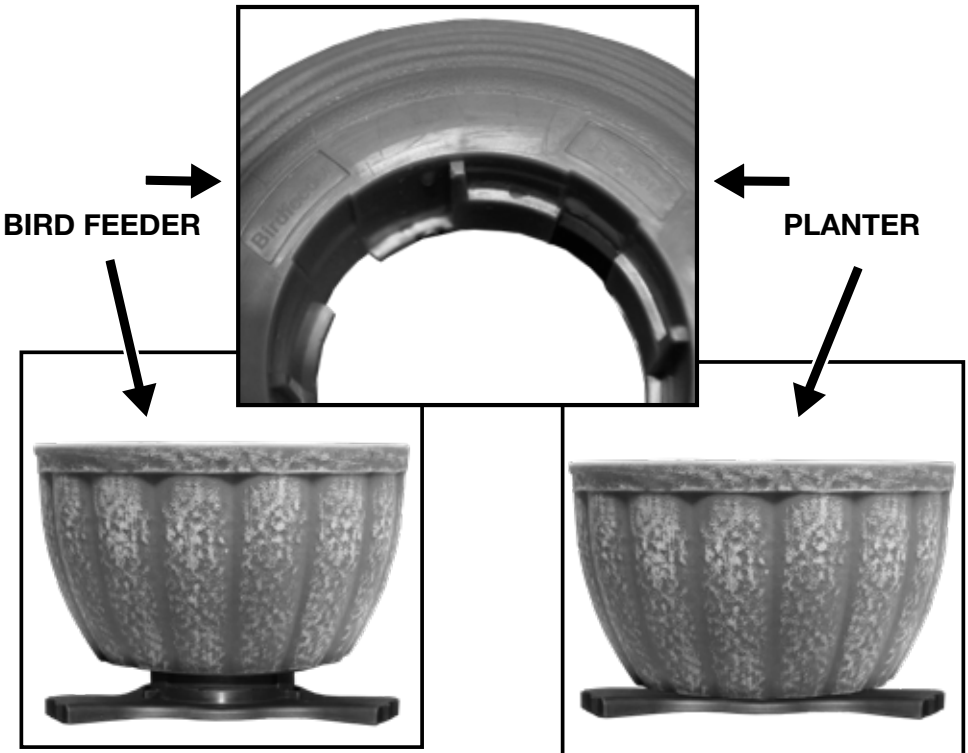


Figure 7

Figure 8

## Planter

To install the Bowl as a Planter, take the Bowl and 3 Prong Foot, line up the arrows (Figure 11, Page 11, white circle) on the 3 Prong Foot to the "Planter" position located on the bottom of the bowl (Figure 8). Align the arrows and push firmly to lock in place. There are 2 small holes on the bottom of the planter that will allow water to be absorbed from the bottom of the bowl when fountain is running (Figure 4, 5 & 6). Place the Bowl and Foot on top of the fountain. Be sure not cover the button or light on top of the fountain. Push on 3 Prong Foot to secure. Once Planter is in place use your favorite soil (do not over pack) and plant your new addition to your family. Push button to enjoy your fountain.





Figure 9

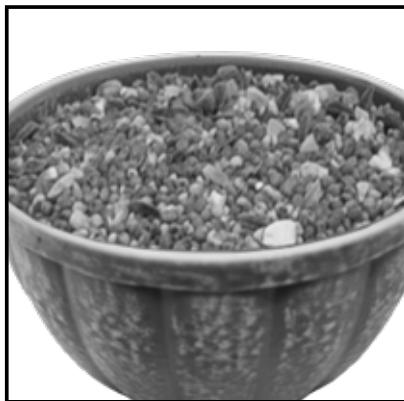


Figure 10

### **Bird Feeder**

To install the bird feeder, take the Infinity bowl and 3 prong foot, line up the arrows (Figure 11 white circle) on the 3 prong foot to the bird feeder position located on the bottom of the bowl (Figure 9 & 10). Align the arrows and push firmly to lock in 3 prong foot. Place the bowl and foot on top of the fountain. Be sure not cover the button or light on top of the fountain. Fill bowl with bird food, avoid over-filling to prevent bird seed from going in your fountain. Push button to enjoy your fountain.

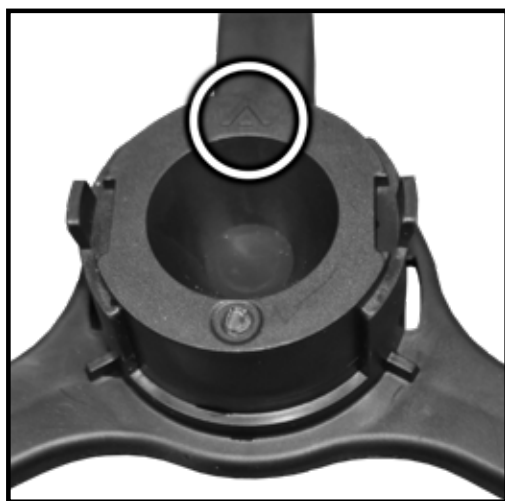


Figure 11



# Troubleshooting and Maintenance

## Cleaning Your Fountain

In order to keep your Fountain in tip-top shape and for a prolonged life, it is best if your Fountain and the bowl or water container that the Fountain is placed in are cleaned periodically. To clean your fountain, drain of all water and disassemble. Use a mild soap and a soft cloth to clean the parts of your Fountain. **DO NOT SCRUB YOUR FOUNTAIN, AS THIS COULD CAUSE DAMAGE TO THE FINISH OF YOUR BERNINI™ FOUNTAIN.**

## Cold Storage

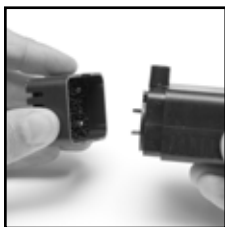
Turn power off, remove from container, clean and dry the Fountain of all water. Remove the batteries for long term storage and bring it indoors. (Now is a great time to clean the pump to remove any debris that may have accumulated throughout the year).

## Cleaning the Water Pump's Parts

After about six weeks of usage, you may want to clean the water pump's impeller to keep your Bernini™ Fountain in tip-top shape. You will need to drain your fountain of all water prior to cleaning the water pumps' parts.

### Water Pump Impeller

The impeller inside of the water pump is what pushes water up through your fountain, allowing you to enjoy the soothing sounds and wonderful sights of your Bernini™ Fountain. After long periods of usage, this part will need to be cleaned to make sure your fountain runs optimally.



Begin by disconnecting the pump from the water tube.

**Step 1:** Remove the front of the water pump by grabbing the sides of the front panel and pull it off the unit.



**Step 2:** Remove the impeller chamber cover. This is tightly fitted on to the impeller chamber, but will come off.



**Step 3:** Remove the impeller from its chamber.



**Step 4:** Rinse the impeller until all debris has been removed. Then replace the impeller in the impeller chamber, put the impeller chamber back on and then replace the pump's front panel.





## Priming The Water Pump

If you find the Water Pump is running, but water is not flowing from your Fountain, you can try priming the Water Pump:

Turn off Fountain, grab both sides of the Fountain and quickly shake your Fountain for ten seconds. This is to dislodge any air bubbles that may be caught in your Water Pump. Press the button to turn your Fountain on.

Water should be flowing from the top of your Fountain. If water is not flowing, press and hold button for over 2 seconds again to turn your Fountain off, and repeat the step above.

## Water Pump Connection

If your fountains water pump becomes disconnected use these instructions to reconnect your water pump.



**Before beginning, remove the Battery Assembly from Tower Topper.**

**Step 1:** Lift the Battery Assembly out of the Tower Base to access pump and tube.



**Step 1:** Rest the Battery and Pump Assembly on its side. Check the connection at the top of the water tube at the Battery Housing. Re connect if needed.



**Step 2:** Check the connection at the bottom of the water tube at the Water Pump. Re connect if needed.



**Step 3:** Reassemble the Battery and Pump Assembly in reverse of removal or refer to the instructions in the Battery and Pump Assembly section of this manual.



# Troubleshooting Guide

PROBLEM	SOLUTION
<b>Fountain is not working</b>	Check that batteries have a full charge: See Changing Battery Section.
<b>Lights not working</b>	Check that batteries have a full charge: See Changing Battery Section.
<b>Pump not working</b>	Check that batteries have a full charge: See Changing Battery Section.
<b>Water Not Flowing</b>	Prime Pump as instructed. (Refer to priming the water pump)
	Add Water
	Check to see that pump tubes are connected
	Check to see that the pump and pump tubes are clear of debris.
	Check batteries are installed correctly: See Installing Battery Section.
	Check that batteries have a full charge: See Changing Battery Section.
	Pump is on but no water flow: Check water level.
	Pump is on but no water flow: Check pump is free of debris, kinks or obstructions. See Troubleshooting section.
<b>Loud Pump</b>	Pump is on but no water flow: Check water tube is connected properly. See Base and Fountain Bowl Installation Section 1.
	Prime Pump as instructed. (Refer to priming the water pump).
<b>Loud Pump</b>	Check water level. Ensure pump free of debris.
	Prime Pump as instructed. (Refer to priming the water pump).
<b>Fountain Settings not working</b>	Check that batteries have a charge: See Changing Battery Section.
<b>Low Water Flow</b>	Check that batteries have a charge: See Changing Battery Section.
	Pump is on but low water flow: Check pump is free of debris, kinks or obstructions. See Troubleshooting section.
	Pump has low water flow: Check water level.
	Pump is on but low water flow: pump is cavitating. See Priming The Water Pump Section.
<b>Loud Sound</b>	Loud sound and weak flow: Air in pump: See Priming The Water Pump Section.
	Loud sound and weak flow: Check pump is free of debris, kinks or obstructions. See Troubleshooting section.
<b>Suddenly Stops</b>	Pump suddenly stops: Check pump is free of debris, kinks or obstructions. See Troubleshooting section.



# BERNINI<sup>TM</sup>

F O U N T A I N S

---

## LIMITED ONE YEAR WARRANTY

This product has a one year limited warranty on all materials and workmanship. Bernini<sup>TM</sup> warrants the original purchaser of this product that the product will be free from manufacturing defects in workmanship and material for a period of one (1) year from the date of original purchase. If within one (1) year this product fails due to defect in material or workmanship, Bernini<sup>TM</sup> will repair, replace or supply any defective part at their discretion. The purchaser must contact Bernini<sup>TM</sup> and provide a description of the defective part, including digital pictures if requested, with this original purchase documentation as validation of warranty coverage.

This warranty does not cover or apply to: (a) damage to the product due to misuse, mishandling, and abuse, (b) products not used in accordance with instructions, (c) product not assembled or installed according to instructions, and (d) normal wear and tear.

Call us for assistance at 1+ (619) 449-2392 or you can email us at:  
[customer care@berninifountains.com](mailto:customer care@berninifountains.com)

Our Customer Care Department is available:

Monday - Friday 8:30am to 4:00pm PST / 11:30am - 7:00pm EST



## IMPORTANT BATTERY SAFETY INSTRUCTIONS

**DANGER:** Do not store battery in an airtight container as it may cause an explosion.

**WARNING:** When using electric devices, basic safety precautions should always be followed to reduce the risk of fire, electric shock and personal injury, including the following:

- WARNING:** 1. Do not incinerate the battery even if it is severely damaged or is completely worn out. The battery can explode in a fire. Check with municipal codes in your area for possible special disposal instructions.
2. If liquid leaks from the battery cell, discontinue use immediately and dispose of properly.
  3. Use only 4-1.5V D Cell Batteries.
  4. Do not attempt to disassemble, remodel or destroy the batteries, as it may cause battery leakage, fire, or bursting.
  5. Never dispose of batteries in the garbage. Disposal of batteries in the garbage is unlawful under state and federal environmental laws and regulations. Always take used batteries to your local battery-recycling center.
  6. Do not mix old and new batteries
  7. Do not mix alkaline, standard (Carbon-zinc), or rechargeable (Ni-Cd, Ni-Mh, etc) batteries

---

Santee, California 92071

World Wide Patents Pending

Email: [customer care@berninifountains.com](mailto:customer care@berninifountains.com)

On the web: [www.berninifountains.com](http://www.berninifountains.com)

Facebook & Pinterest: Bernini Fountain Company

Instagram: @berninifountains Twitter: @yrdllc

© Yeiser Research & Development, LLC; 2021. All rights reserved.

---