

# BERNINI™

F O U N T A I N S



## CALVARI FOUNTAIN

Owner's Manual



# BERNINI<sup>TM</sup>

F O U N T A I N S

## **PLEASE READ FIRST BEFORE RETURNING**

**Please call us for assistance at 1+ (619) 449-2392  
or email us at [customer care@berninifountains.com](mailto:customer care@berninifountains.com)**

**Our Customer Care Department is available:**

**Monday - Friday 8:30am to 4:00pm PST, 11:30am to 7:00pm EST**

If you have any questions regarding assembly, parts, or operation, please visit our website at [www.berninifountains.com](http://www.berninifountains.com). You will find instructional videos on how to assemble and operate your fountain, and will keep you up to date on our newest products.

This product comes with a one year limited warranty against materials and workmanship.

**Please review the list of accessories included with your Bernini<sup>TM</sup> Fountain on the next page. Please note, images of parts are not to scale with one another.**

### *About Calvari:*

*Calvari is a quaint Italian village of a little over 60 people – sometimes the simplest things are the best. Imagine a historic town square with a well-worn fountain that is known by few but beloved by all who have had the chance to experience its tranquility.*

# CONTENTS

- 6 Step 1: Fountain Bowl Installation**
- 7 Large Bowl Locking System
- 8 Step 2: Water Pump, Middle Tier, Small Bowl,  
Finial Installation & Water Pump Connection**
- 9 Water Pump Installation
- 10 Middle Tier Installation
- 11 Small Bowl Installation
- 11 Finial installation
- 12 Water Pump Installation
- 14 Step 3: Setting Up Your Fountain**
- 14 Fill Your Fountain
- 15 Operating Your Fountain
- 16 Troubleshooting and Maintenance**
- 16 Cleaning your Fountain
- 16 Cold Storage
- 16 Cleaning the Water Pump's Parts
- 16 Water Pump Flow Adjustment
- 17 Water Pump Impeller
- 17 Priming the Water Pump
- 18 Water Pump Connection
- 19 Using Leveling Shims
- 19 Troubleshooting Guide

# Parts for your Bernini™ Fountain:



Middle Tier



Large Bowl



Base



Finial



Small Bowl



Power Cords & Plugs



Leveling Shim

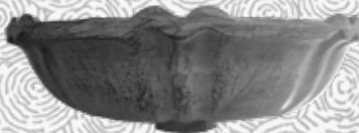
# Step 1:

## Fountain Bowl Installation

You will need:



Base

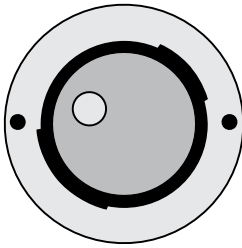


Large Bowl

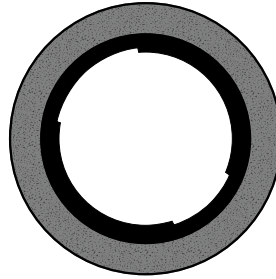


# Large Bowl Locking System

A look at how the Large Bowl locking system works on your Fountain.



Bottom of Large Bowl

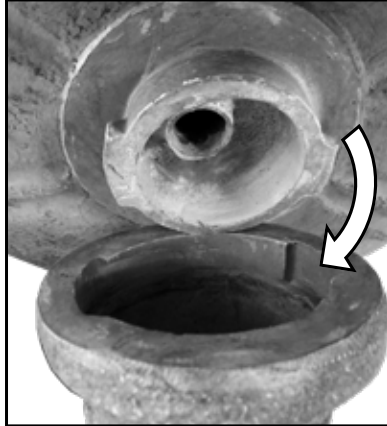


Top of Base

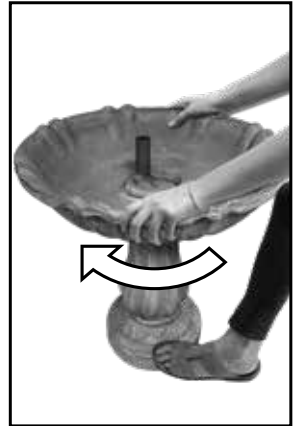
**Note:** You will notice that there are two different sized tabs on the bottom of the Large Bowl and there are two corresponding grooves in the top of the Base. These tabs fit together and lock when turned clockwise.



**Step 1:** Be sure to place the base of your fountain on a flat, firm surface.



**Step 2:** Align tabs and connect the Large Bowl to the base.



**Step 3:** Turn the Large Bowl a quarter turn clockwise to lock it into place.



At this point, your fountain should look like the image on the right. Go to the next page for the next step to setup your new fountain.



# Step 2:

## Water Pump, Middle Tier, Small Bowl, Finial Installation & Water Pump Connection

You will need:





# Water Pump Installation



For the next step, you will install the Water Pump into the Large Bowl.



**Step 1:** Feed the Water Pump Power Cord down the pipe.



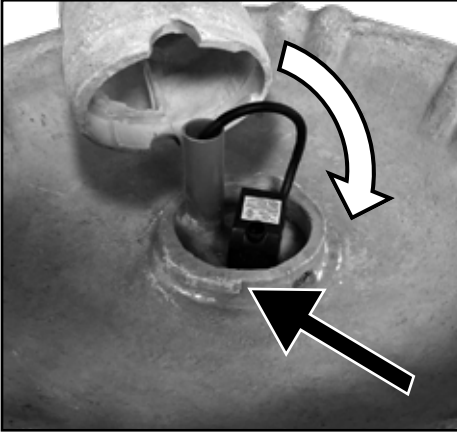
**Step 2:** Route the Water pump Electrical Power Cord through the base of the fountain and through the notch on the bottom of the Pedestal.



Be sure to leave approximately 4 to 5 inches of slack in the cord coming from the Water Pump so the pump will sit on the bottom of the Large Bowl when the fountain tier is assembled.



## Middle Tier Installation

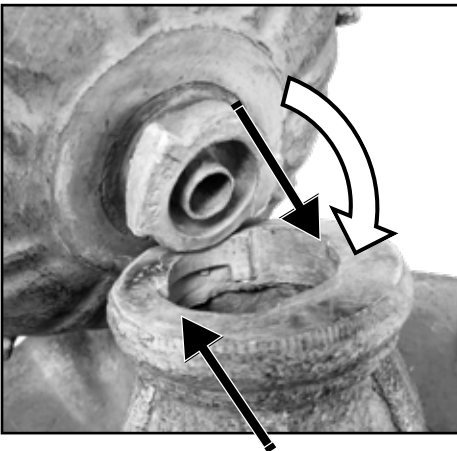


The Middle Tier utilizes a key system that will lock the Middle Tier to the Large Bowl. Install the Middle Tier onto the large bowl. Align the tabs on the Large Bowl with the notches in the Middle Tier. (Black Arrow)

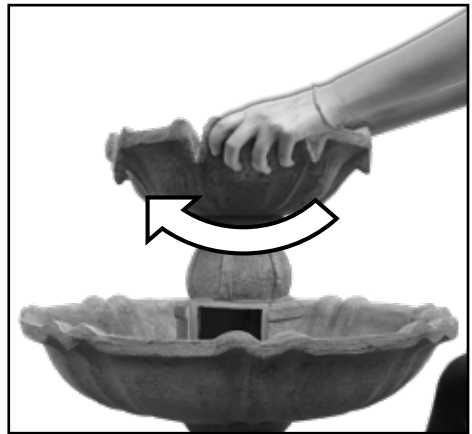


**Step 1:** Turn the Middle Tier a quarter turn to lock into place.

## Small Bowl Installation



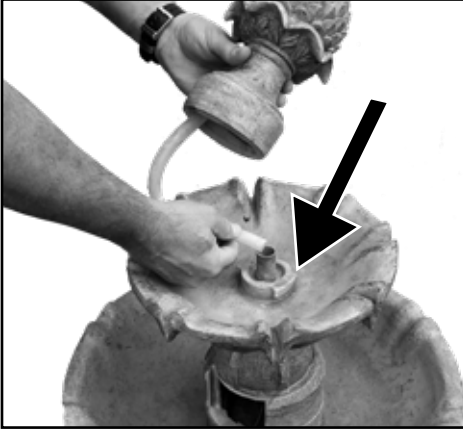
**Step 1:** The Small Bowl utilizes a key system that will lock the Middle Tier to the Small Bowl. Align the tabs on the bottom of the Small Bowl and insert into the Middle Tier.



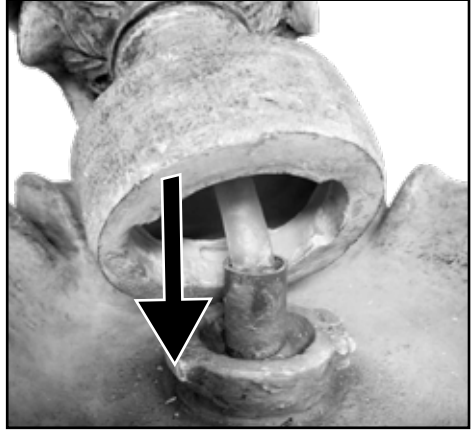
**Step 2:** Turn the Small Bowl a quarter turn to lock into place..



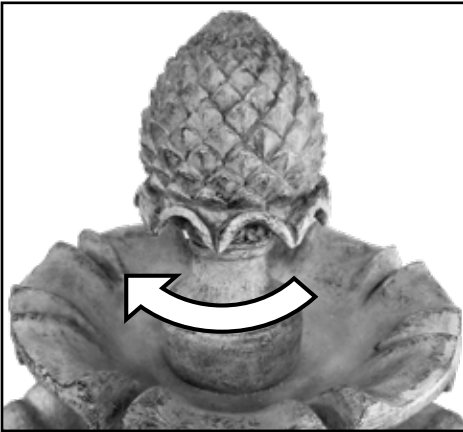
# Finial Installation



**Step 1:** The Finial also uses a key system that will lock it to the middle of the Small Bowl (Black arrow). Feed the Finial silicone tube down the center tube in the Small Bowl.



**Step 2:** After feeding the water tube down the tube in the center of the small bowl, set the Finial down onto the locking tabs.



**Step 3:** Turn the Finial a quarter turn to lock into place.



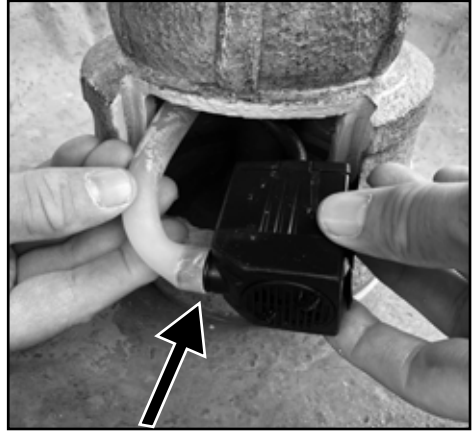
At this point, your fountain should look like the image above. Go to the next page for the next step to setup your new fountain.



# Water Pump Installation



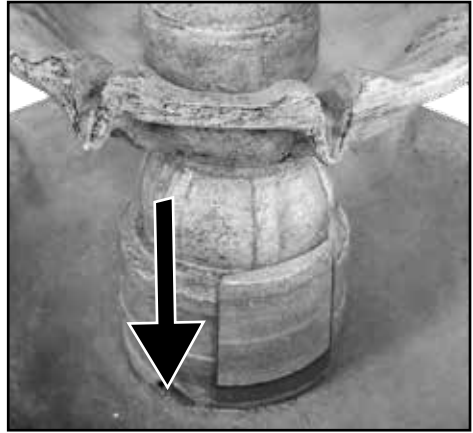
**Step 1:** Pull the Water Tube out of the pump cavity and connect the Water Tube to the Water Pump.



**Step 2:** Ensure that the water tube is securely connected to the Water Pump.



**Step 3:** Tuck the Water Pump back into the pump cavity ensuring the Water Pump is sitting flat on the bottom of the Large Bowl.



**Step 4:** Install the Water Pump Door by aligning notch and sliding door down on the Middle Tier.





At this point, your fountain should look like the image below. Go to the next page for the next step to setup your new Bernini™ Fountain.



# Step 3:

## Setting Up Your Fountain

You will need:



Fountain Assembled

Water To  
Fill Your  
Fountain



## Fill Your Fountain

Fill the Fountain Tier until water pours over the spouts. Then fill the Large Bowl until the water is about 1 inch (2.5 centimeters) from the top of the bowl.

## Operating Your Fountain

After you have filled your Fountain, grab both sides of the Large Bowl and quickly shake your Fountain for ten seconds. This is to dislodge any air bubbles that may be caught in your Water Pump. Plug in your Fountain. Water should be flowing from the top of your fountain. If water is not flowing, Unplug your Fountain, and repeat the step above.

### **IF YOUR FOUNTAIN IS MAKING A LOUD NOISE, DON'T PANIC!**

This just means that there are air bubbles stuck in the Water Pump. Your pump will not be harmed and you can easily fix this issue. You can try priming the Fountain again by repeating the steps above however, if the problem still persists, refer to the "Priming The Water Pump" section of this manual for instructions on how to prime the Water Pump.



# Troubleshooting and Maintenance

## Cleaning your Fountain

In order to keep your fountain in tip-top shape and free of algae, you should clean your fountain every two months. To clean your fountain, drain of all water and disassemble. Use a mild soap and a soft cloth to clean the parts of your Bernini™ fountain. Your fountain bowl will form a natural patina finish which with time may appear lighter or whiter than the original color. This is normal. **DO NOT SCRUB YOUR FOUNTAIN, AS THIS COULD CAUSE DAMAGE TO THE FINISH OF YOUR BERNINI™ FOUNTAIN.**

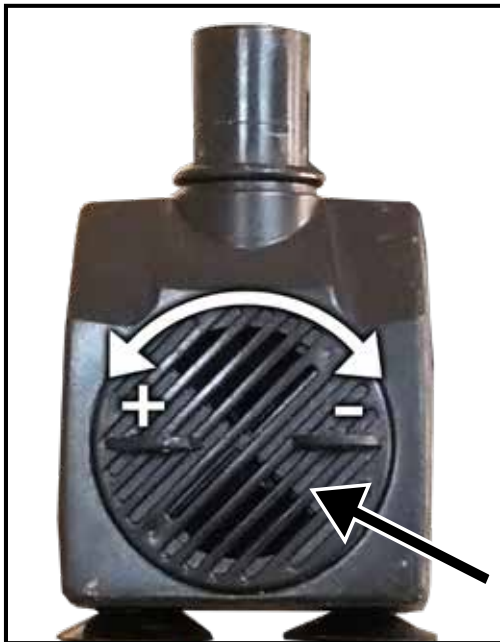
## Cold Storage

Drain the water from fountain prior to the first freeze of the season. Clean and dry the fountain of all water. Remove the water pump and bring it indoors. (Now is a great time to clean the pump to remove any debris that may have accumulated throughout the year. See page 13) Store in a warm dry area.

## Cleaning the Water Pump's Parts

## Water Pump Flow Adjustment

**Step 1:** Adjust the water flow by locating the Water Flow Adjustment Lever on the Water Pump side cover. Rotate the lever toward the + (plus) sign to increase water flow or – (minus) sign to decrease water flow.

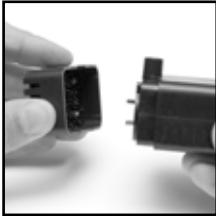
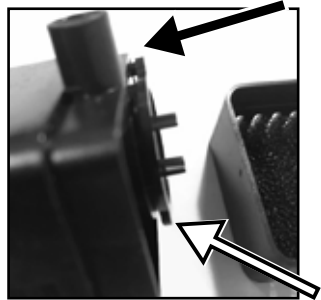




## Water Pump Impeller

The impeller inside of the Water Pump is what pushes water up through your fountain, allowing you to enjoy the soothing sounds and wonderful sights of your Bernini™ Fountain. After long periods of usage, this part will need to be cleaned to make sure your fountain runs optimally.

**Please Note: If pump is cavitating and or water is not flowing or not flowing properly, check that the water pump impeller chamber cover is pressed on all the way.**



**Step 1:** Remove the front of the Water Pump by grabbing the sides of the front panel and pull it off the unit.



**Step 2:** Remove the impeller chamber cover. This is tightly fitted on to the impeller chamber, but will come off.



**Step 3:** Remove the impeller from its chamber.



**Step 4:** Rinse the impeller until all debris has been removed. Then replace the impeller in the impeller chamber, put the impeller chamber back on and then replace the pump's front panel.

## Priming the Water Pump

Is your fountain making a loud noise or do you not see water flowing?

**If you find the water pump is running, but water is not flowing from your fountain, or you hear a loud grinding noise coming from your fountain, not to worry, you can try priming the water pump:**

Begin by unplugging to turn your fountain off.

Firmly grasp onto the two sides of the large bowl. Agitate the water by quickly shaking the fountain back and forth for about five seconds.

Plug the fountain in to turn your fountain on.

If the problem still persists, repeat previous step 2 - 3 times. This helps dislodge any air bubbles in your pump that may be causing the problem.

**If the problem still persists, try the method below:**

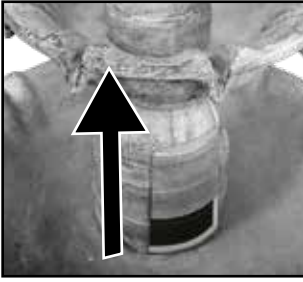
Begin by unplugging to turn your fountain off.

Remove the Water Pump Door from the Middle Tier by lifting the Water Pump Door. Now detach the water pump from the feeder tube inside the Middle Tier. Plug the Fountain Back in to check if water is coming from the discharge side of the pump. If water is coming out of the discharge side of the Water Pump all air has been removed. Unplug Fountain reconnect Water Pump and reinstall Water pump Door plug your fountain in and enjoy.

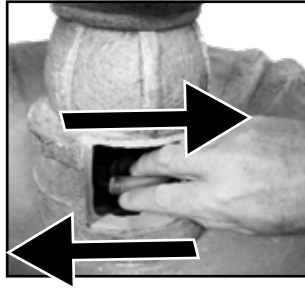
**When removing the water pump, use caution when pulling the pump from the feeder tube. Pinch the bottom of the feeder tube close to the pump with one hand and then pull the water pump from the feeder tube with your other hand.**



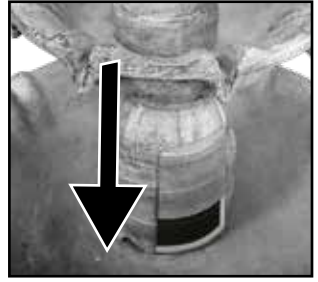
## Priming the Water Pump (Continued)



**Step 1:** Unplug your fountain to turn off. Remove the Water pump Door from the Middle Tier.



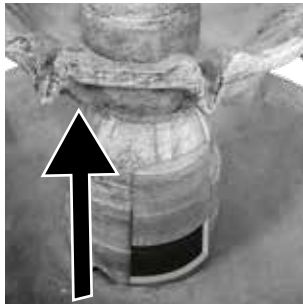
**Step 2:** Grab a hold of the Water Pump and shake back and forth for about ten seconds.



**Step 3:** Reinstall the Water Pump Door and Plug the Fountain back in.

## Water Pump Connection

If your Bernini™ Fountain Water Pump becomes disconnected from the water tube inside of the Middle Tier, use these instructions to reconnect your water pump.



**Step 1:** Remove the door from the middle tier by lifting the Water Pump door.



**Step 2:** After the door has been removed from the Middle Tier check to see if the Water Tube in connected. If the Water Tube and Pump have become disconnected see step 3 to reconnect.



**Step 3:** Connect the male outlet on the top of the water pump to the tube inside of the middle tier. Make sure this connection is snug. Then reinstall the Water pump Door on the middle tier with the instructions on page 12.



## Using Leveling Shims

If you are having trouble getting water to flow evenly off of the spouts on your Bernini™ Fountain, you may need to level the surface that your fountain is placed on. With the included leveling shims, you do not need to move your fountain, just follow the instructions below to get even water flow.



Place the shim underneath the base on the opposite side that is not flowing as strongly as the other sides.



Grasp the shim and break it on the crease closest to the end of the base.



Once the shim is broken, it will be hidden but will level your fountain.

## Troubleshooting Guide

PROBLEM	SOLUTION
<b>Water Not Flowing</b>	Check if Fountain is plugged in correctly: See Setting Up Fountain Section.
	Pump is on but no water flow: Check water level.
	Pump is on but no water flow: Check pump is free of debris, kinks or obstructions. See Troubleshooting section.
	Pump is on but no water flow: Check water tube is connected properly. See Base and Fountain Ball Installation Section 1.
<b>Low Water Flow</b>	Check if Fountain is plugged in correctly: See Setting Up Fountain Section.
	Pump is on but low water flow: Check pump is free of debris, kinks or obstructions. See Troubleshooting section.
	Pump is on low water flow: Check water level.
	Pump is on but low water flow: pump is cavitating. See Priming The Water Pump Section.
<b>Loud Sound</b>	Loud sound and weak flow: Air in pump: See Priming The Water Pump Section.
	Loud sound and weak flow: Check pump is free of debris, kinks or obstructions. See Troubleshooting section.
<b>Suddenly Stops</b>	Pump suddenly stops: Check pump is free of debris, kinks or obstructions. See Troubleshooting section.



# LIMITED ONE YEAR WARRANTY

This product has a one year limited warranty on all materials and workmanship. Bernini™ warrants the original purchaser of this product that the product will be free from manufacturing defects in workmanship and material for a period of one (1) year from the date of original purchase. If within one (1) year this product fails due to defect in material or workmanship, Bernini™ will repair, replace or supply any defective part at their discretion. The purchaser must contact Bernini™ and provide a description of the defective part, including digital pictures if requested, with this original purchase documentation as validation of warranty coverage.

This warranty does not cover or apply to: (a) damage to the product due to misuse, mishandling, and abuse, (b) products not used in accordance with instructions, (c) product not assembled or installed according to instructions, and (d) normal wear and tear.

Call us for assistance at 1+ (619) 449-2392 or you can email us at:  
customer care@berninifountains.com  
Our Customer Care Department is available:  
Monday - Friday 8:30am to 4:00pm PST / 11:30am - 7:00pm EST

**B E R N I N I**<sup>TM</sup>  
F O U N T A I N S

---

Santee, California 92071

World Wide Patents Pending

Email: customer care@berninifountains.com

On the web: www.berninifountains.com

Facebook & Pinterest: Bernini Fountain Company

Instagram:@berninifountains Twitter: @yrdllc

© Yeiser Research & Development, LLC; 2021. All rights reserved.

---

Made in China  
Designed in the USA

001243 BCFI rev 5b us