

Construction Instructions

Here are all the tools you need to create The Colors of the Flag. All you really need is glue & scissors. I prefer hot glue, but this can be hazardous around smaller children. If this is the case, I recommend ordinary white glue. I also use a straight edge and a dry pen (no ink), for scoring the fold lines. I highly recommend scoring the fold lines.



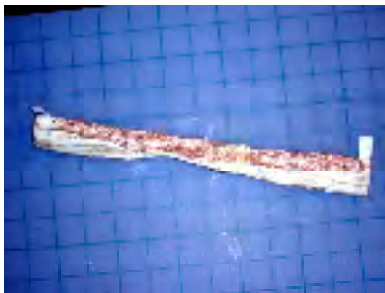
Step 1. Cut out all of the parts along the perimeter black lines and score all pieces along each of the dashed fold lines.



Step 2. Locate the two wall sections. Align the overlaps and carefully glue them together.



Step 3. Next, believe it not, roll the wall up in a tube and 'crunch' it. Squeeze it many times without tearing it. Unroll it, roll it up the opposite way (white side out), and 'crunch' it again. Unroll it and carefully smooth it out on the work surface.



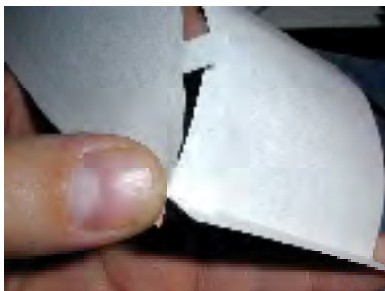
Step 4. Fold over and glue the two bottom tabs on the wall as shown.



Step 5. Pull the base tabs together and glue as shown on both top tabs on the wall allowing the rocks to stick up past.



Step 6. Let's build the cave. Find the three pieces and lay them as shown with the gray base at the lighter edge of the cave back. Be sure the tabs on the cave roof, base and back have been folded before you begin. Align the tab with the center edge of the cave back and glue.



Step 7. Carefully align the end tab and squarely glue it to the cave back as shown to the right of the thumb. This is important. Do this with all four end tabs. Glue the remaining tabs in place.



Montezuma's Castle, Arizona

Page 2 of 3



Step 8: Locate the three house pieces. Start with the main house piece, and fold along the two lines creating a roof and a wall as shown.



Step 9: Fold and glue the large tab on the main house piece to the house tower piece as shown. Then, glue the smaller tab making sure the main house roof and wall are square.



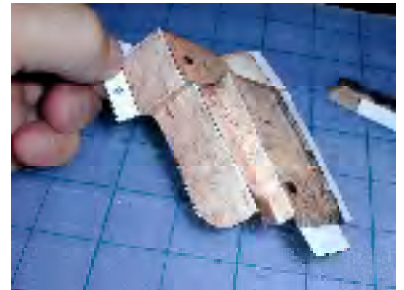
Step 10: Fold the main house roof piece creating a step as shown.



Step 11: Glue the bottom house tower tab to the bottom tab on the main house piece by carefully aligning and overlapping the tab.



Step 12: Glue the main house roof to the main house one tab at a time as shown.



Step 13: Apply glue to the tower roof tab, align the house back wall and press in place. This back wall will surround the tower. Apply glue to the remaining tabs and complete gluing the back wall to the house. Refer to the photographs as we go along.



Step 14: Next, glue the house bottom, left side tab to the bottom left side cave tab. Make sure it's aligned all the way to the left against the left cave wall. Then, continue gluing the right side of that same tab to the cave tab.



Step 15: Carefully glue the left main house tab to the left side of the cave. Be sure to squarely align the tab. To complete this step, glue the right lower tab on the back wall to the right cave side tab. Lastly, glue the upper tab to the right cave side. **BE SURE TO ALIGN THE TAB SQUARELY!** It's tricky.

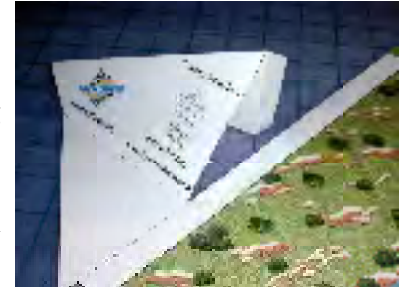


Montezuma's Castle, Arizona

Page 3 of 3



Step 16: Now, we can glue the cave / house assembly to the wall. Apply glue to the top cave tab, carefully align the cave just above the opening in the wall keeping it centered with the opening. Once the glue is dry, apply glue to the remaining three tabs and press in place.



Step 17: Let's work on the last main piece, the base. Fold the base stand as shown, apply glue to the inside where the pieces come together and press in place.

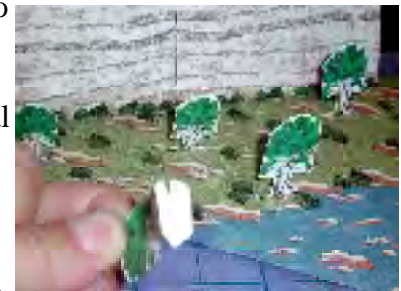


Step 18: Glue the wall / cave assembly to the white rectangle on the base starting with one edge apply glue about half way. Once the glue is dry, apply glue to the remaining half and press in place.

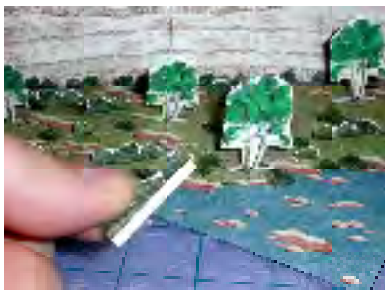


Step 19: Glue the tab on the base stand to the rear of the wall as shown.

Step 20: The remaining steps are optional and may be too tedious for younger children, but adds a great deal of detail to your model.



Locate the sycamore tree, fold them in half along the dashed line. Hold the tree up to a light and apply glue to the tree and trunk areas only. Do not apply glue to the bases. We need to fold them back them later. Repeat for all trees.



Step 21: Fold the tree bases back as shown and apply glue. Place each of the trees in a random order to the green grassy area of the model base.



Step 22: Fold the bush bases over, apply glue, and randomly place all of the bushes throughout the grassy area of the base and along the waterline.

That's it! Congratulations! Your Montezuma's Castle is complete!