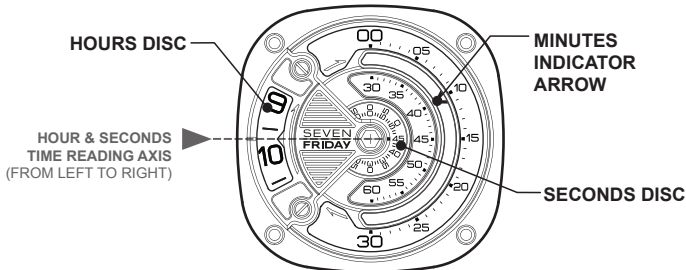


# INSTRUCTIONS - M2B

## DISPLAY

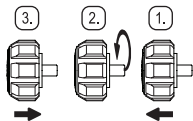


> All 3 discs rotate clockwise

AUTOMATIC MOVEMENT - MIYOTA 8215 - MADE IN JAPAN

## WINDING THE MAINSPRING

Automatic winding watch can also be hand wound by turning the crown clockwise in normal position. Wind 15-20 times and it will start to move, after slightly shaking.



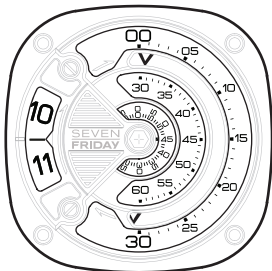
## SETTING THE TIME

1. Pull the crown out to the 2nd Click - Time setting position.
2. Turn the crown to set hour and minute disc.
3. After the time has been set, push the crown back to the normal position.

# TIME READING

DISPLAY (12h)

EXAMPLE 1



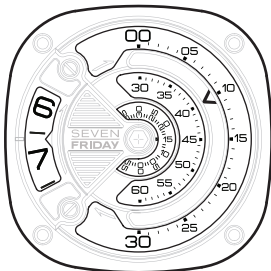
10:30:45

HOURS: 10AM OR PM

MINUTES: 30MIN

SECONDS: 45S

EXAMPLE 2



6:40:15

HOURS: 6AM OR PM

MINUTES: 40MIN

SECONDS: 15S