

MONSTER®

LUNA

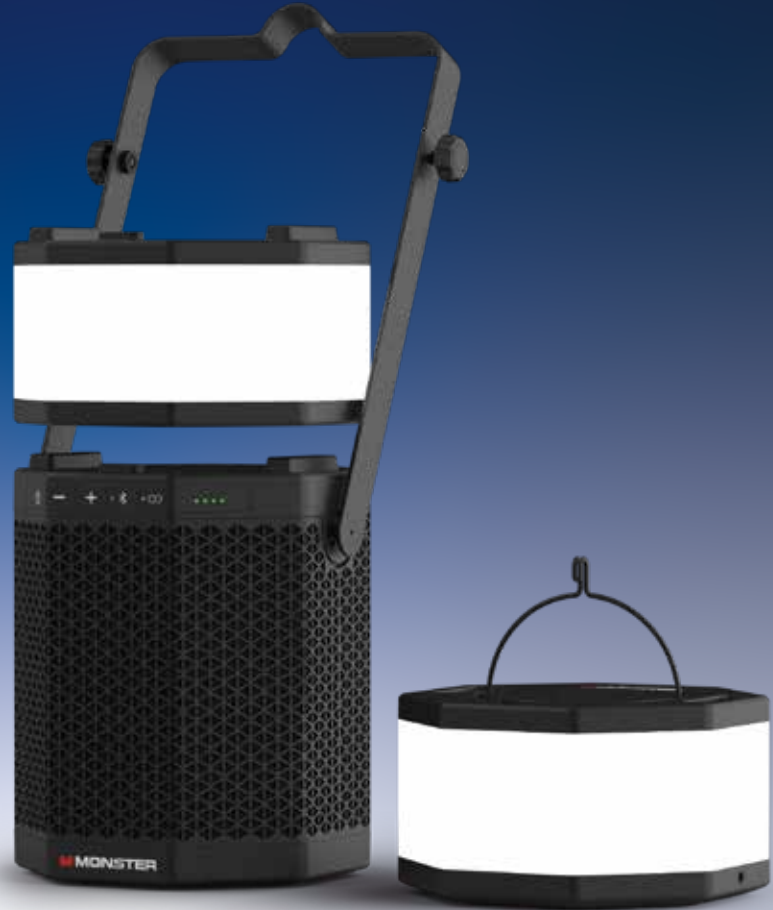
PORTABLE WIRELESS SPEAKER
WITH DETACHABLE LIGHTS



**FOR QUESTIONS
OR TECHNICAL
SUPPORT**

**Please call:
1-800-976-0877**

**Please do not return this
product to the store**



USER MANUAL

THANK YOU FOR CHOOSING MONSTER

Congratulations on your Monster LUNA speaker! Please take your time to explore all of the features and utilities we have built into this product.

We put all of our products through rigorous testing and quality control. For your peace of mind, we offer a one-year limited warranty against manufacturing defects and workmanship. Please refer to the warranty section of the user manual for more details.

For more information on all of our products, please visit: MyMonsterAudio.com.

FOLLOW US:



@MyMonsterAudio



@MyMonsterAudio



/MyMonsterAudio

Download from here:

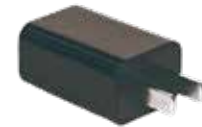


PACKAGE CONTENTS

Included with your purchase:



USB Type-C cable (1M)



Adapter



Monster LUNA Speaker



User Manual & Quick Start Guide
(Incl. Warranty Statement)

TABLE OF CONTENTS

Product control | 1

- Control Panel
- Charging Port
- Handlamp Key

Power & Battery | 1

- Power/Charging
- Full charge

Remove Handlamp | 1

Features | 2

- IPX5 water resistance
- LED light
- Handlamp(Light Key)

EZ PLAY 2 | 2

Getting started | 3

- Charging Battery
- Bluetooth Connection

Specifications | 3

- General
- LED Status Indicators

Troubleshooting | 4

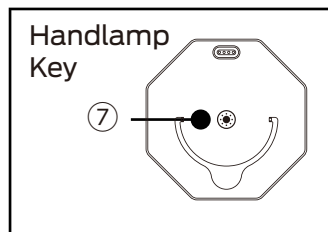
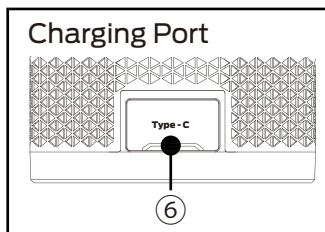
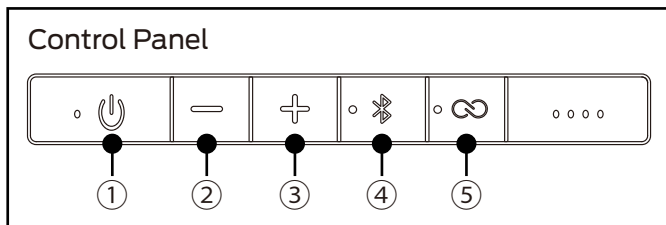
Limited warranty | 5

Important safety instructions | 6

FCC warning statement | 7

FCC Radiation exposure statement | 7

PRODUCT CONTROLS



- 1. Power key
- 2. Volume - key
- 3. Volume + key
- 4. BT (Pause & Play & Paring) key
- 5. EZ play 2 key
- 6. Type - C charging port
- 7. Light key

POWER & BATTERY

IMPORTANT:

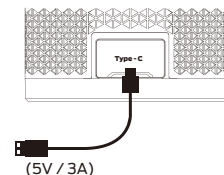
Before first use, charge for ~7 hours.

Power/Charging

- Connect the INPUT POWER port to an external power source using the included power cord.

Full charge

- achieved in 7 hours while powered OFF
- achieved in 15 hours while powered ON.



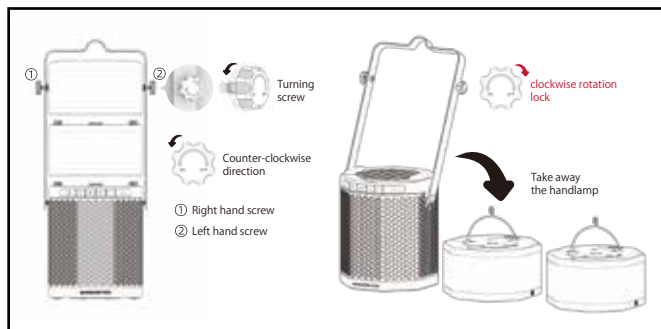
- Even if the unit has been fully charged, it is best to recharge the unit again if it has not been used in 3 months, do not allow 6 months to pass without charging.
- For better battery efficiency, it is necessary to recharge the unit after each use, do not leave the unit without power for more than 15 days.

USB port is for charging ONLY

- they will not make audio connections.

REMOVE HANDLAMP

- Turn the screw and remove the Handlamps.



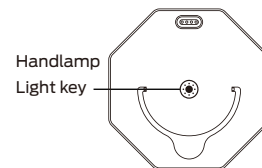
FEATURES

IPX5 water resistance :


As rated according to international Protection Marking (IP Code), the New Lanterns speaker is rated IPX5 for water resistance capable of withstanding exposure to water. This makes the New Lanterns speaker safe in light rain, splashing water, and even around the pool (but not in the pool!).

LED light :






The LUNA speaker has two Handlamp. Use the Handlamp to light up the night, or add some color and ambience to festivities. Change colors and brightness to suit your personal needs.



Handlamp (Light Key) :

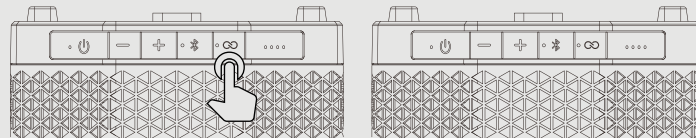
Click one time 	RGB light CHROME→ Red / Green / Blue / Yellow / Purple / Cyan → White light L1 / L2 / L3 / L4	Double-click 	Flashlight : breathing → Stays → SOS
--	---	---	--------------------------------------

EZ PLAY 2 (Additional speakers sold separately)

1. Press the  button to turn on the first speaker, the Bluetooth LED and EZ PLAY 2 LED will slow flash. Press and hold the  key for 2 seconds and the LED will begin to flash rapidly.
2. On additional EZ PLAY 2 speaker**, press the  key to turn on the second speaker, Bluetooth LED and EZ PLAY 2 LED will flash slowly. Press and release the  button and the EZ PLAY 2 LED will begin to flash slowly.
3. Press and hold the  key for 2 seconds and the EZ PLAY 2 LED will begin to flash rapidly.
4. Congratulations! You have successfully paired between the 2 speakers.
5. Repeat steps 1 - 3 to add additional speakers.
You can connect up to 4 speakers total.

EZ PLAY 2 Function Note:

- When speakers successfully connect, the same audio will play through all the speakers.
- The Monster LUNA speakers only need to be synced once and will automatically connect to each other when both are turned on.



GETTING STARTED

Charging Battery :

- Before first use: Charge the unit for 7 hours.
- While charging, the RED LED indicator will flash slowly.
- When the unit is fully charged, the RED LED indicator will turn ON.
- When the battery is low, the RED LED indicator will flash rapidly.
- Press the Power button to turn the speaker ON
(RED LED will turn on, and voice confirmation).
- Speaker will enter Bluetooth pairing mode (BLUE LED will flash).



SPECIFICATIONS

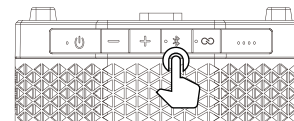
General :

● Function	BT & lighting & apps
● Broadcast range	30m
● Water resistance	IPX5
● APP	EZ PLAY 2
● Battery	11.1V / 2200mAh
● Battery Life	Estimated >10 hours active use under 60% volume
● Power Input	Type-C 5V / 3A
● Speaker output	10W * 2
● Driver	2.75" * 2
● THD + Noise	< 10%
● S/N	> 70dB
● Handlamp Power	3W
● Handlamp input	5V(2pin POGO PIN)
● Handlamp Battery	2200mAh *2(One battery per lamp)
● Product Dimension	15.07"*59.05"*55.5" (H x W X D)
● Net Weight	2.3lbs
● Gross weight	2.7lbs

3

Bluetooth Connection :

- Make sure Bluetooth function is enabled on your device.
- Place Bluetooth device and speaker within pairing distance (~3 ft.).
- Press and hold Bluetooth button for 3 seconds to enter pairing mode (BLUE LED will fast flash).
- Search for Bluetooth connections on your device. Select "Monster LUNA".
- Speaker will confirm connection with audible sound (BLUE LED turns solid).



LED Status Indicators :

Power LED (RED)	○ ⏻	ON	Will stay on for 3s then turn off
		OFF	Unit in Standby mode
Charging LED (RED)	○ ⏻	Solid	Fully charged
		Slow Flash	Charging in progress
Bluetooth LED (Blue)	○ 📶	Solid	Unit is connected with BT device
		Fast Flash	Unit is in BT pairing mode
		Solid	EZ PLAY 2 Speakers connected
EZ PLAY 2 LED (Orange/White)	○ 🔗	Fast Flash	Scan Transmit unit signal / send signal to receive unit (connection request)
		<25%	indicator will flash rapidly
Battery LED (Green)	○ ○ ○ ○	25%	One indicator lights
		50%	Two indicator lights
		75%	Three indicator lights
		100%	Four indicator lights

TROUBLESHOOTING

Speaker is not powering on	<ul style="list-style-type: none">● Verify that the POWER switch is fully turned to the ON position.● Ensure the speaker is not in STANDBY MODE.● Make sure AC POWER cord is fully inserted into the unit.
Buttons are not responding	<ul style="list-style-type: none">● Reset the speaker by turning the power OFF, and then back ON.● Unplug the AC POWER cord, then plug it back in.
No music is playing	<ul style="list-style-type: none">● Make sure the speaker is set to the same source as your audio device. If you are playing audio via AUX cable, make sure the speaker is in AUX IN mode, etc.● Make sure the VOLUME is high enough on your audio device as well as the speaker.
Bluetooth audio quality is poor	<ul style="list-style-type: none">● Move your music device closer to the speaker.● Remove objects that may be interfering with the wireless connection.
Bluetooth device is not pairing	<ul style="list-style-type: none">● Verify that the speaker and your device have BLUETOOTH mode active.● Make sure the speaker and/or your device is not already paired with another device.● Check that the speaker is in pairing mode.● Turn the speaker OFF, and then back ON. Press and hold the BLUETOOTH button to manually enter pairing mode.

NOTES :

LIMITED WARRANTY

Model: MNLUNA

This Monster-branded product, marketed as new, in the original carton to the original purchaser ("Product"), is warranted by Russell Distribution Company, LLC against manufacturing defects in materials and workmanship for a limited warranty period of Ninety (90) Days for Labor and One (1) year for Parts. This Limited Warranty is conditioned upon proper use of Product by you, the Purchaser.

This Limited Warranty does not apply to store display products and product sold as a "marked down" special, in as is condition, "close outs", "liquidation and clearance sales", "open box", products missing accessories, or no fault found.

Proof of purchase in the form of a Bill of Sale, Receipt or Receipted Invoice is evidence the Product is within the limited warranty period. The Bill of Sale, Receipt or Receipted invoice must be presented as a precondition to obtaining the limited warranty service.

This limited warranty begins on the original date of purchase and is valid only on Products purchased through authorized dealers and used in the United States, and Puerto Rico, by the original Purchaser. To receive warranty service, the Purchaser must first contact us for problem determination and service procedures. The original dated bill of sale, receipt or receipted invoice must be presented upon request as proof of purchase.

We will repair your product or if repairs cannot be made, we will replace it at no charge with the same or similar product. If the Product is defective as specified in this limited warranty during the limited warranty period, we may use new or remanufactured parts to repair the Product. All replaced parts and products become our property and must be returned to us. Replacement parts and products assume the remaining original limited warranty, or ninety (90) days, whichever is longer.

Product freight must be prepaid by you, the original Purchaser and shipped in either its original packaging or packaging affording an equal degree of protection. We will not be responsible for or obligated to replace damaged Products.

If the Product is received damaged, it is your responsibility as the consumer to file a claim against the carrier. We will only store the damaged Product for 30 days and reserve the right, in our sole discretion, to dispose of the damaged Product or ship it back to you at your expense after 30 days.

This limited warranty covers manufacturing defects in materials and workmanship encountered in normal, and except to the extent otherwise expressly provided for in this statement noncommercial use of this Product, and shall not apply to the following, including, but not limited to: Damage which occurs in shipment; delivery and installation; applications and uses for which this Product was not intended; altered Product or serial numbers; cosmetic damage or exterior finish; accidents, abuse, neglect, fire, water, lightning or other acts of nature; use of products,

equipment, systems, utilities, services, hardware, supplies, accessories, applications installations, repairs, external wiring or connectors not supplied or authorized by us or the manufacturer, which damage this Product result in service problems: incorrect electrical line voltage, fluctuations and surges; customer adjustments and failure to follow operating instructions, cleaning, maintenance and environmental instructions that are covered and prescribed in the instruction book; reception problems and distortion related to noise, echo, interference or other signal transmission and delivery problems; burned-in images. Uninterrupted or error-free operation of the Product is not warranted.

There are no express or implied warranties other than those listed and described above and no warranties whether express or implied including, but not limited to any implied warranties of merchantability or fitness for a particular purpose, shall apply after the express warranty periods stated above and no other express warranty or guaranty given by any person firm or corporation with respect to this product shall be binding on us.

Repair or replacement as provided under this limited warranty is your exclusive remedy as the consumer. We shall not be liable for any incidental, or consequential damages for breach of any express or implied warranty on this product except to the extent prohibited by applicable law. Any implied warranty of merchantability or fitness for a particular purpose on this product is limited for the duration of this limited warranty this limited warranty shall not extend to anyone other than the original purchaser of this product, is nontransferable and states your exclusive remedy.

Some states do not allow limitations on how long an implied warranty lasts, or the exclusion or limitation of incidental or consequential damages, so the above limitations or exclusions may not apply to you. This limited warranty gives you specific legal rights, and you may also have other rights, which vary from state to state. Any provision contained herein which is found contrary to state or local laws shall be deemed null and void and the remaining provisions shall continue in full force and effect.

**To obtain warranty service,
please contact technical support with questions**

Phone: 1-800-976-0877 Email: support@mymonsteraudio.com

Do not return this product to the store. Visit: MyMonsterAudio.com

IMPORTANT SAFETY INSTRUCTIONS

- 1) Read these instructions - All the safety and operating instructions should be read before this product is operated.
- 2) Keep these instructions - The safety and operating instructions should be retained for future reference.
- 3) Heed all warnings - All warnings on the appliance and in the operating instructions should be adhered to.
- 4) Follow all instructions - All operating and use instructions should be followed.
- 5) This apparatus can be used in wet location conditions after disconnected the AC Mains supply and closing the water proof cap for the AC inlet. It must not be used in wet location conditions when charging. Do not use this apparatus near water- The appliance should not be used near water or moisture - for example, in wet basement or near a swimming pool.
- 6) Clean only with dry cloth.
- 7) Do not block any ventilation openings, install in accordance with the manufacturer's instructions.
- 8) Do not install near any heat sources such as radiations, heat registers, stoves, or other apparatus (including amplifiers) that produce heat.
- 9) Do not defeat the safety purpose of the polarized or grounding plug. A polarized plug has two blades with one wider than the other. A grounding plug has two blades and a third grounding prong. The wide blade or the third prong is provided for your safety. If the provided plug does not fit into your outlet, consult an electrician for replacement of the obsolete outlet.
- 10) Protected the power cord from being walked on or pinched particularly at plugs, convenience receptacles, and the point where they exit from the apparatus.
- 11) Only use attachments / accessories specified by the manufacturer.
- 12) Use only with the cart, stand, tripod, bracket, or table specified by the manufacturer, or sold with the apparatus. When a cart or rack is used use caution when moving the cart / apparatus combination to avoid injury from tip-over.



- 13) Unplug this apparatus during lighting storms or when unused for long periods of time.
- 14) Refer all servicing to qualified service personnel. Servicing is required when the apparatus has been damaged in any way, such as power-supply cord or plug is damaged, liquid has been spilled or objects have fallen into the apparatus, the apparatus has been exposed to rain or moisture, does not operate normally, or has been dropped.
- 15) Mains plug is used as the disconnect device, the disconnect device shall remain readily operable.
- 16) Do not install this equipment in a confined or building in space such as a book case or similar unit, and remain a well ventilation conditions at open site. The ventilation should not be impeded by covering the ventilation openings with items, such as newspapers, table-cloth, curtains, etc.
- 17) No naked flame sources, such as lighted candles, should be placed on the apparatus.
- 18) Attention should be drawn to the environmental aspects of battery disposal.

WARNING: The batteries shall not be exposed to excessive heat such as sunshine, fire or the like.

CAUTION: Danger of explosion if battery is incorrectly replaced. Replace only with the same or equivalent type. Protective earthing terminal. The apparatus should be connected to a mains socket outlet with a protective earthing connection.



Protective earthing terminal. The apparatus should be connected to a mains socket outlet with protective earthing connection.

FCC WARNING STATEMENT

This device complies with Part 15 of the FCC Rules. Operation is subject to the following two conditions:

- (1) this device may not cause harmful interference, and
- (2) this device must accept any interference received, including interference that may cause undesired operation.

These limits are designed to provide reasonable protection against harmful interference in a residential installation. This equipment generates, uses, and can radiate radio communications. However, there is no guarantee that interference will not occur in a particular installation. If this equipment does cause harmful interference to radio or television reception, which can be determined by turning the equipment off and on, the user is encouraged to try to correct the interference by one or more of the following measures:

- Reorient or relocate the receiving antenna.
- Increase the separation between the equipment and receiver.
- Connect the equipment into an outlet on a circuit different from that to which the receiver is connected.
- Consult the dealer or an experienced radio/TV technician for help.

FCC RADIATION EXPOSURE STATEMENT

This equipment complies with FCC radiation exposure limits set forth for an uncontrolled environment. In order to avoid the possibility of exceeding the FCC radio frequency exposure limits, Human proximity to the antenna shall not be less than 20cm (8 inches) during normal operation.



A lightning flash and arrowhead within an equilateral triangle is intended to alert the user to the presence of insulated "dangerous voltage" within the product's enclosure that may be of sufficient magnitude to constitute a risk of electric shock to persons.

CAUTION

**RISK OF ELECTRIC SHOCK
DO NOT OPEN**

Warning: To reduce the risk of electric shock, do not remove the shell (or back), No user serviceable parts inside refer servicing to qualified service personnel.



An exclamation point within an equilateral triangle is intended to alert the user to the presence of important operation and maintenance (servicing) instructions in the literature accompanying the appliance.

WARNING

Prevent fire and shock hazards. Do not use extension cords or outlets that expose plug blades. Do not expose cables and plugs to rain or moisture.

Do not attempt to perform any servicing that is not included in the operating instructions. Do not attempt to replace the battery, as incorrect installation can cause fire or explosion. For service, contact qualified service personnel.

Do not remove cover or back of product. There are no user-serviceable parts inside. Attempting to modify controls or performance beyond manufacturer specifications may result in hazardous exposure to radiation.

MONSTER®

LUNA

PORTABLE WIRELESS SPEAKER
WITH DETACHABLE LIGHTS



If the unit detects liquid or debris in the grooves for docking charging, the unit won't charge.
To avoid failure of charging, make sure the grooves are clean.



Battery mode: The lamp won't charge when unit is below 50%.

IMPORTANT CHARGING PRECAUTIONS

When the main unit is less than 50%
the lamp won't charge



Battery 100%



Battery 75%



Battery 50%



Battery 25%

MUSIC WITHOUT LIMITS WITH APP CONTROL AND BROADCASTING FEATURES

MONSTER®

Monster and the M Monster logo are registered trademarks of Monster, Inc. and its subsidiaries in the U.S. and other countries, used under license.

The Bluetooth word mark and logos are registered trademarks owned by Bluetooth SIG, Inc. Other trademarks and trade names are those of their respective owners.

1-800-976-0877

support@mymonsteraudiomcom-MyMonsterAudio.com

CALIFORNIA PROPOSITION

⚠️ 65 WARNING ⚠️

WARNING: This product can expose you to chemicals including Lead and Lead Compounds, which are known to the State of California to cause cancer and birth defects or other reproductive harm.

For more information, go to:

www.P65Warnings.ca.gov